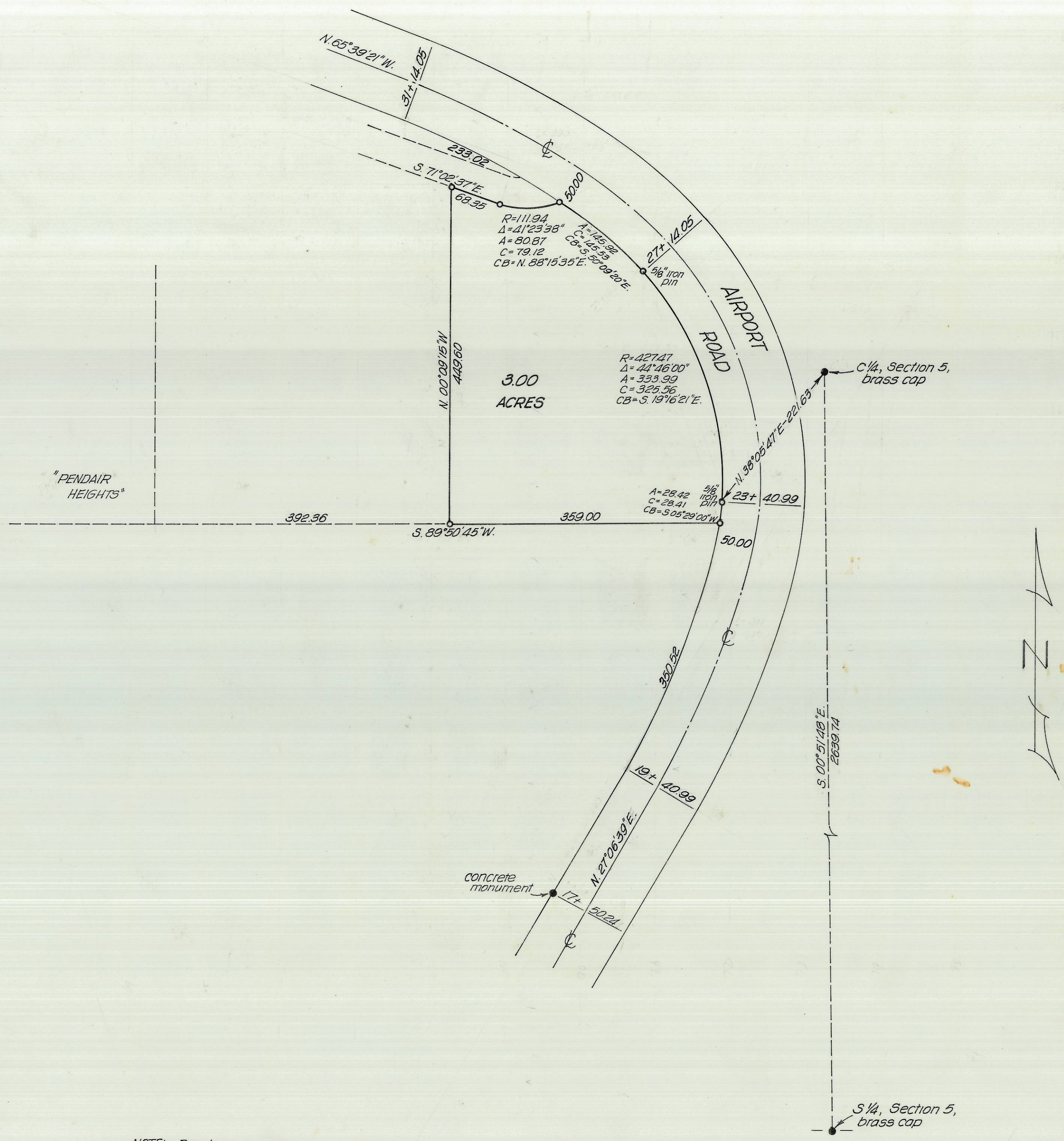


J-80-B



NOTE: Bearings are true bearings and are based upon City of Pendleton survey records. Ties to Pendair Heights are based upon ties made by the City of Pendleton.

LEGEND:
 ● Denotes points found.
 ○ Denotes 1/2" iron pins set unless otherwise noted.

REGISTERED PROFESSIONAL LAND SURVEYOR
 David H. Krumbein
 OREGON
 JULY 17, 1970
 DAVID H. KRUMBEIN
 933

Survey for Lowell Steen, situated in the W 1/2, Section 5, T. 2 N., R. 32 E., W. M., Umatilla, County, Ore.

J-80-B

WAYNE HARRIS CO INC.				
ENGINEERS-SURVEYORS		PENDLETON, ORE		
SCALE	1"=100'	DRN. BY	C.T.P.	DRSN. NO
DATE	6/22/75	CKD. BY	D.H.K.	75-70B