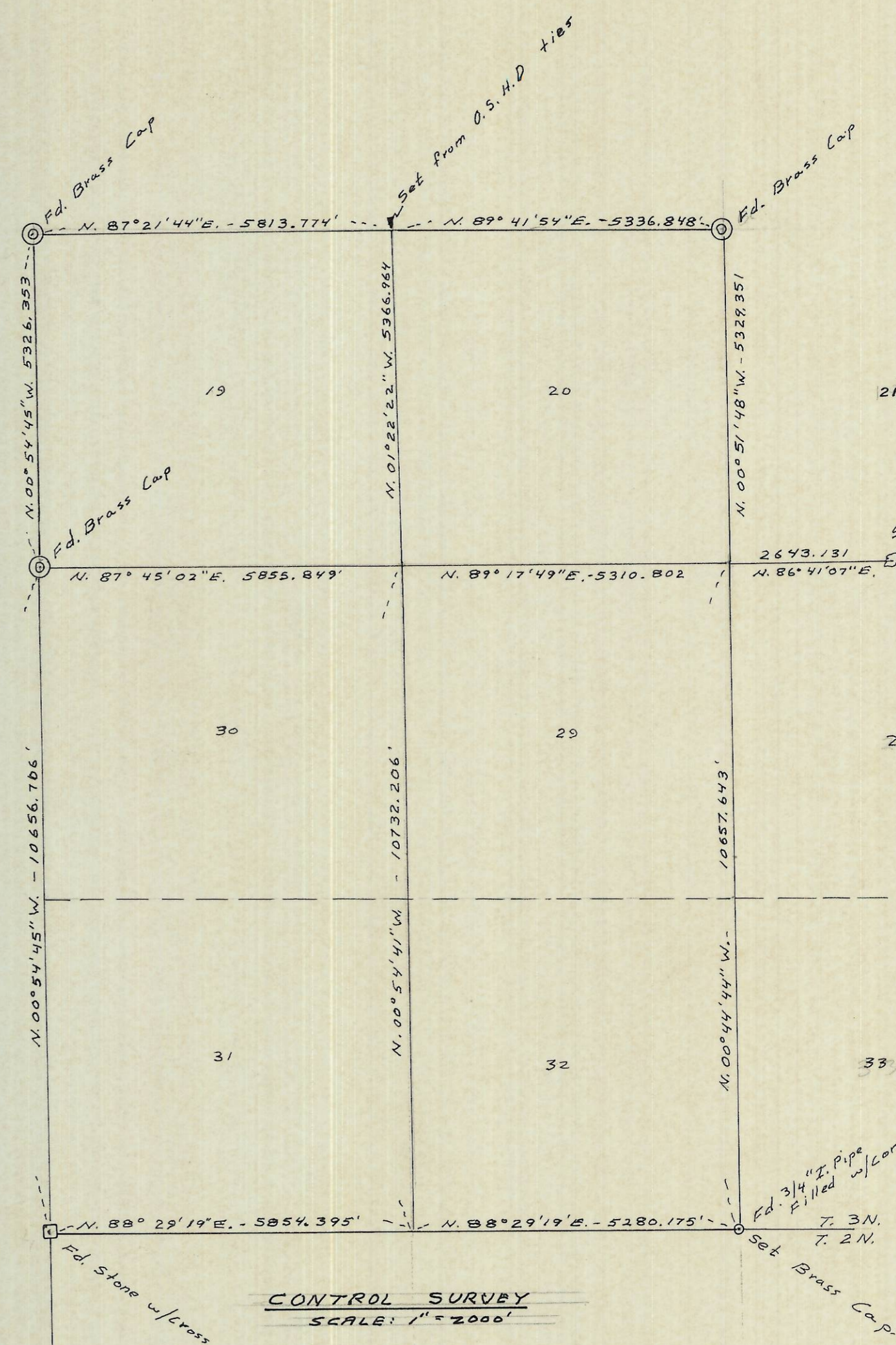


SECTION 20
SCALE: 1" = 500'

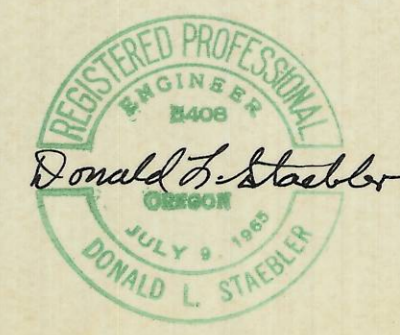


CONTROL SURVEY
SCALE: 1" = 2000'

LEGEND

- Set BRASS CAP
- Set IRON PIN
- Set R.R. SPIKE

- NOTES:**
- 1) Bearing Base: East Line of R. 28 E.W.M. being N. 00° 54' 45" W. (Grid: Oregon State Coord. System North Zone). Determined from monuments of I-80 Freeway through Sections 1 & 2, T. 3N, R. 28E. & Bearing = S. 77° 06' 54" E.
 - 2) The corners of Section 20 were double or single proportioned as per Manual of Instructions
 - 3) Brass Caps Set were stamped as per Manual of Instructions.



I-158-B

SURVEY FOR
DICK SNOW
IN THE
N.W. 1/4 OF SEC. 20, T. 3N, R. 29E.

DRN. BY: HFS.	DATE: 8-14-74	SCALE: NOTED
---------------	---------------	--------------

DONALD L. STAEBLER
CONSULTING ENGINEER
P.O. Box 91
PENDLETON OREGON 97801