

# RECORD OF SURVEY

LOCATED IN THE SW 1/4 OF SEC. 32  
TWP. 4 N., RNG. 29 E.W.M.  
UMATILLA COUNTY, OREGON

CLIENT: CHIEF SCOTT STANTON  
UMATILLA COUNTY FIRE DIST. #1  
320 S. FIRST ST.  
HERMISTON, OR 97838

## SURVEYOR'S NARRATIVE

THIS SURVEY WAS UNDERTAKEN IN MARCH OF 2019 AT THE REQUEST OF CHIEF SCOTT STANTON, UMATILLA COUNTY FIRE DISTRICT #1 TO MONUMENT THE WEST LINE OF LOT 8 AND THE EAST LINE OF LOT 7 BOTH OF BLOCK 13 OF THE PLAT OF STANFIELD RECORDED AS BOOK 3 PAGE 30 UMATILLA COUNTY SUBDIVISION PLATS.

IN 1909 THE TOWN OF STANFIELD WAS PLATTED, SEE BOOK 3 PAGE 30 UMATILLA COUNTY SUBDIVISION PLATS.

IN 1975 STAEBLER MONUMENTED THE STREET INTERSECTIONS ALONG COE AVENUE AND FURNISH AVENUE. SEE RECORD OF SURVEY NO. J-131-B. MONUMENTS WERE FOUND AND RECOVERED AT THE INTERSECTIONS OF COE AVENUE WITH BARBARA STREET AND COE AVENUE WITH HARRIMAN STREET AND AT THE CENTERLINE INTERSECTION OF COE AVENUE WITH THE WEST RIGHT OF WAY OF O'BRIEN STREET.

IN 1978 LS 951 SET THE NORTHWEST AND SOUTHWEST CORNERS OF LOT 12 AND THE NORTHEAST AND SOUTHEAST CORNERS OF LOT 9 OF BLOCK 13, SEE RECORD OF SURVEY NO. P-064-AX. NONE OF THESE CORNERS WERE FOUND OR RECOVERED.

IN 1982 LS 933 SET THE NORTHWEST AND THE NORTHEAST CORNERS OF LOT 16 OF BLOCK 13, SEE RECORD OF SURVEY NO. 82-27-AX. BOTH OF THESE CORNER WERE FOUND AND RECOVERED.

IN 1994 LS 951 FOUND THE NORTHWEST AND NORTHEAST CORNERS OF BLOCK 2, SEE RECORD OF SURVEY NO. 94-160-A. BOTH OF THESE CORNERS WERE FOUND IN 2017, SEE RECORD OF SURVEY NO. 17-118-B AND IN 2018, SEE RECORD OF SURVEY NO. 18-014-B. THESE TWO CORNERS WERE ALSO FOUND AND RECOVERED DURING THE COURSE OF THIS SURVEY.

A POINT WAS COMPUTED AT 40.00 FEET DISTANCE FROM THE FOUND RXR SPIKE MARKING THE INTERSECTION OF COE AVENUE AND HARRIMAN STREET AND ON LINE BETWEEN THE FOUND RXR SPIKE MARKING THE INTERSECTION OF COE AVENUE AND HARRIMAN STREET AND THE FOUND RXR SPIKE MARKING THE INTERSECTION OF COE AVENUE AND BARBARA STREET.

THE SOUTHWEST CORNER OF BLOCK 13 WAS THEN COMPUTED AT 50.00 FEET DISTANCE AND ON LINE BETWEEN THIS COMPUTED POINT AND THE FOUND 1 1/2 INCH ALUMINUM CAP MARKING THE NORTHWEST CORNER OF BLOCK 13.

A POINT WAS COMPUTED AT 40.00 FEET DISTANCE FROM THE FOUND RXR SPIKE MARKING THE INTERSECTION OF COE AVENUE AND BARBARA STREET AND ON LINE BETWEEN THE FOUND RXR SPIKE MARKING THE INTERSECTION OF COE AVENUE AND BARBARA STREET AND THE FOUND RXR SPIKE MARKING THE INTERSECTION OF COE AVENUE AND HARRIMAN STREET.

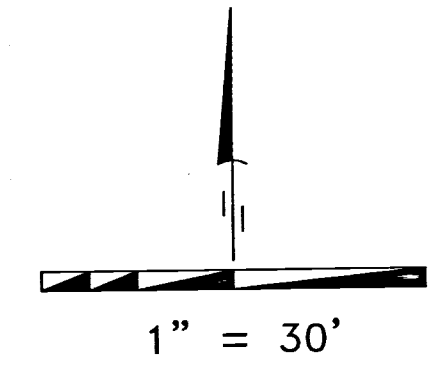
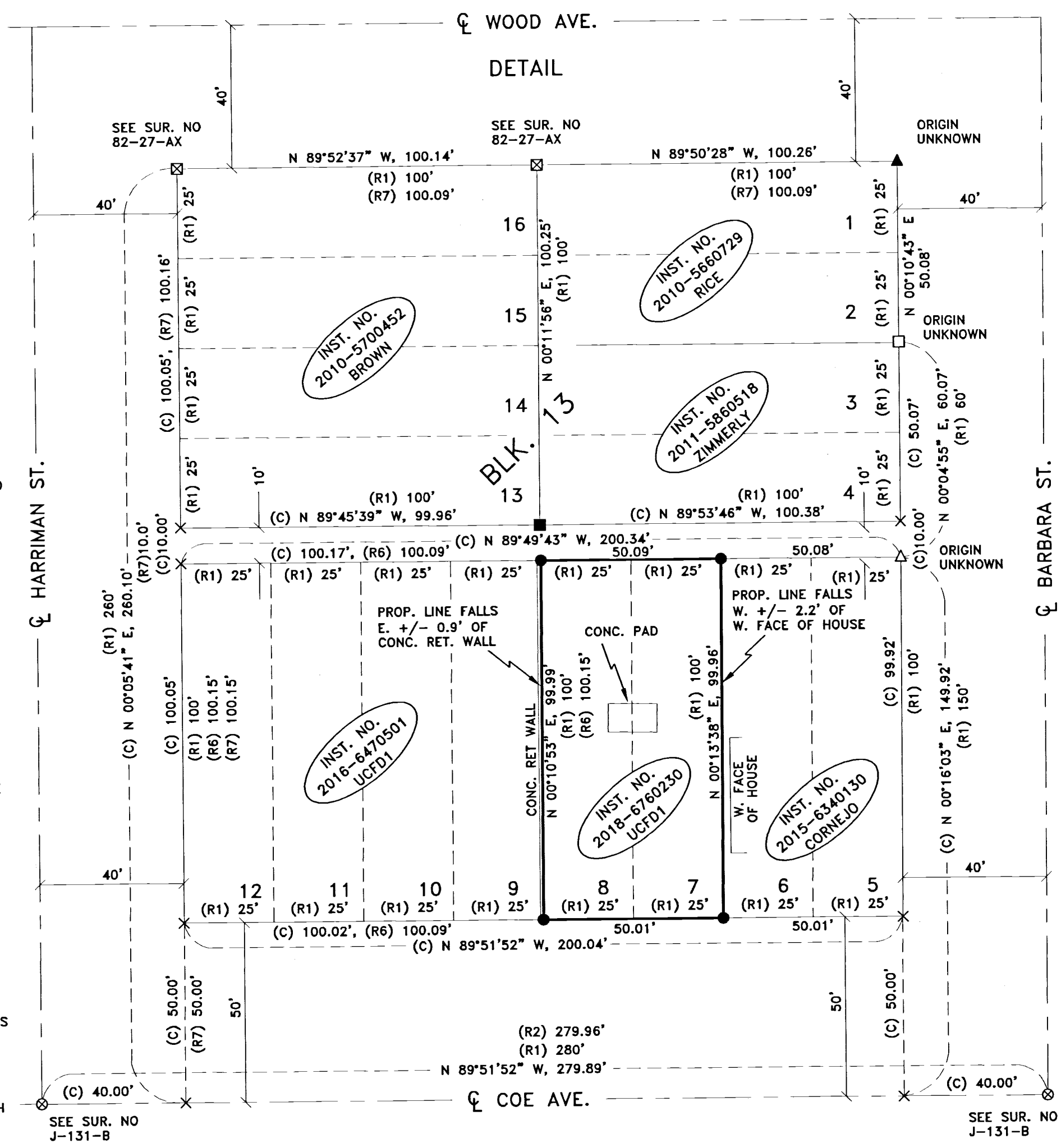
THE SOUTHEAST CORNER OF BLOCK 13 WAS THEN COMPUTED AT 50.00 FEET DISTANCE AND ON LINE BETWEEN THIS COMPUTED POINT AND THE FOUND 1 1/2 INCH IRON PIPE MARKING THE NORTHEAST CORNER OF LOT 5 OF BLOCK 13.

THE NORTHWEST CORNER OF LOT 12 WAS COMPUTED AT PROPORTIONAL DISTANCE BETWEEN THE NORTHWEST AND SOUTHWEST CORNERS OF BLOCK 13.

THE NORTHWEST AND SOUTHWEST CORNERS OF LOT 8 AND THE NORTHEAST AND SOUTHEAST CORNERS OF LOT 7 WERE COMPUTED AT PROPORTIONAL DISTANCE BETWEEN THE 2 NORTH AND THE 2 SOUTH CORNERS OF THE SOUTHERLY PORTION OF BLOCK 13.

THIS SURVEY WAS ACCOMPLISHED UTILIZING 2 TRIMBLE R-10 GNSS RECEIVERS. AN AUTONOMOUS POSITION WAS GENERATED ON THE BASE UNIT AND THE PREVIOUSLY MENTIONED NORTHWEST AND NORTHEAST FOUND CORNERS OF BLOCK 2 WERE SUBSEQUENTLY USED FOR A SITE CALIBRATION, EACH CORNER WAS THEN LOCATED OR SET ON A 1 SECOND EPOCH WITH A FIXED SOLUTION.

THE BASIS OF BEARING OF THIS SURVEY IS BETWEEN THE NORTHWEST AND NORTHEAST FOUND CORNERS OF BLOCK 2 AND IS BASED ON SURVEY NUMBER 94-160-A.



## LEGEND

- SET 5/8" X 30" IRON ROD WITH YELLOW PLASTIC CAP STAMPED "PLS LS 48490"
- ▲ FOUND 1/2" IRON ROD
- △ FOUND 3/4" IRON ROD
- ⊗ FOUND RXR SPIKE
- △ FOUND 1/2" IRON PIPE
- FOUND 1 1/2" ALUMINUM CAP LS 933
- ⊗ FOUND 1 1/2" ALUMINUM CAP DEFACED
- FOUND 5/8" IRON ROD
- × CALCULATED (NOT SET)
- (C) CALCULATED

## DEEDS

- INST. NO. 2010-5660729 (RICE)
- INST. NO. 2011-5860518 (ZIMMERLY)
- INST. NO. 2015-6340130 (CORNEJO)
- INST. NO. 2018-6760230 (UCFD1)
- INS. NO. 2016-6470501 (UCFD1)
- INST. NO. 2010-5700452 (BROWN)

## SURVEYS

- (R1) PLAT OF THE TOWN OF STANFIELD BK. 3 PG. 30
- (R2) STAEBLER FOR CITY OF STANFIELD SUR. NO. J-131-B
- (R3) EDWARDS FOR MORRISON SUR. NO. 94-160-A
- (R4) K. PRIMM FOR CITY OF STANFIELD SUR. NO. 17-118-B
- (R5) K. PRIMM FOR CITY OF STANFIELD SUR. NO. 18-014-B
- (R6) EDWARDS FOR STANFIELD FIRE DEPT. SUR. NO. P-064-AX
- (R7) KRUMBEIN FOR STANFIELD SENIOR CITIZEN, INC. SUR. NO. 82-27-AX

## SURVEYOR'S CERTIFICATION

I, KEITH P. PRIMM, A PROFESSIONAL LAND SURVEYOR IN THE STATE OF OREGON HEREBY CERTIFY THAT I HAVE SURVEYED THAT TRACT OF LAND DESCRIBED AND RECORDED AS INSTRUMENT NUMBER 2018-6760230 UMATILLA COUNTY DEED RECORDS AND THAT THIS MAP CORRECTLY REPRESENTS A SURVEY CONDUCTED UNDER MY DIRECT SUPERVISION IN MARCH 2019, AND HAVE SET THE PROPER MONUMENTS AS ESTABLISHED BY O.R.S. 209.

REGISTERED PROFESSIONAL LAND SURVEYOR

*K.P.P.*

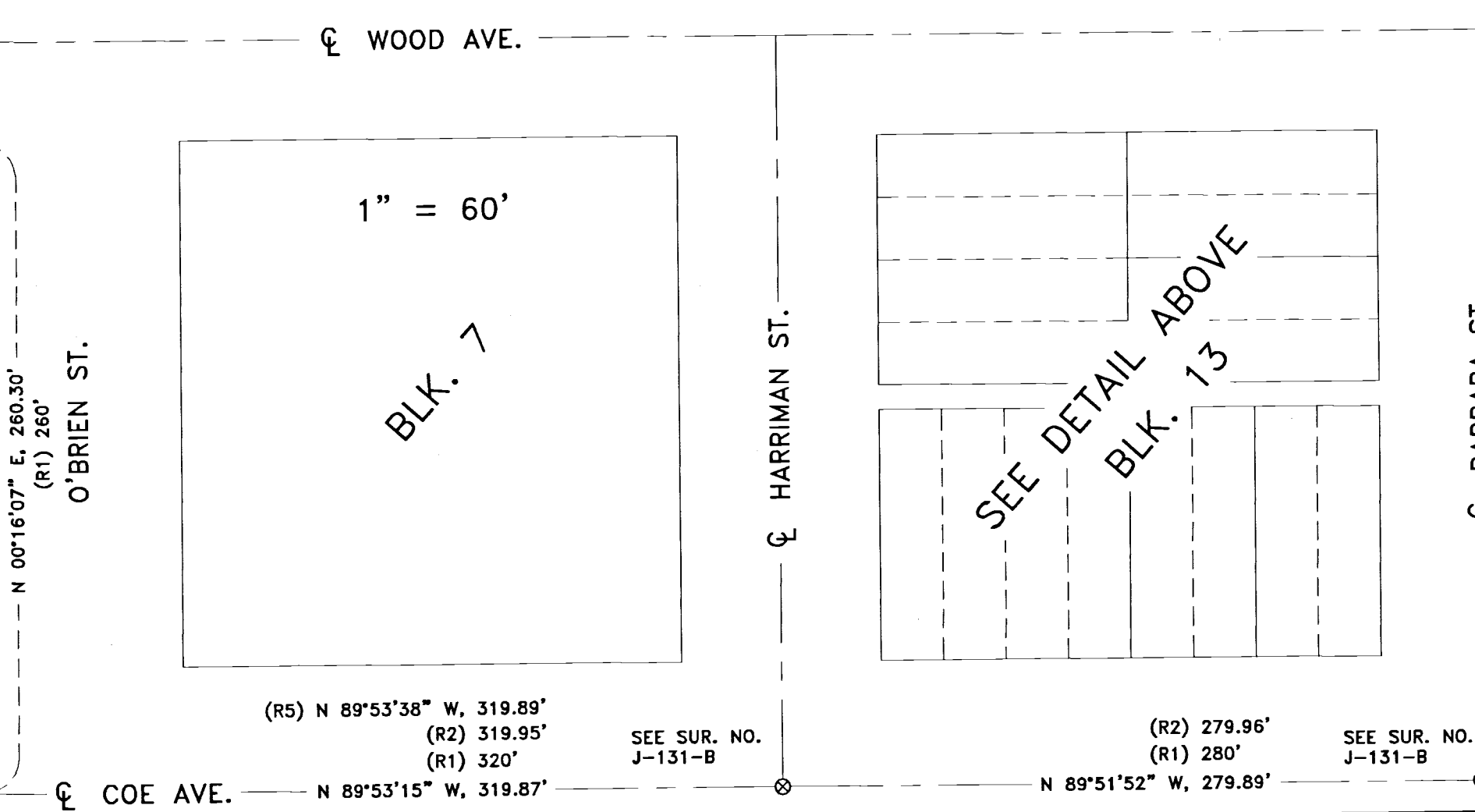
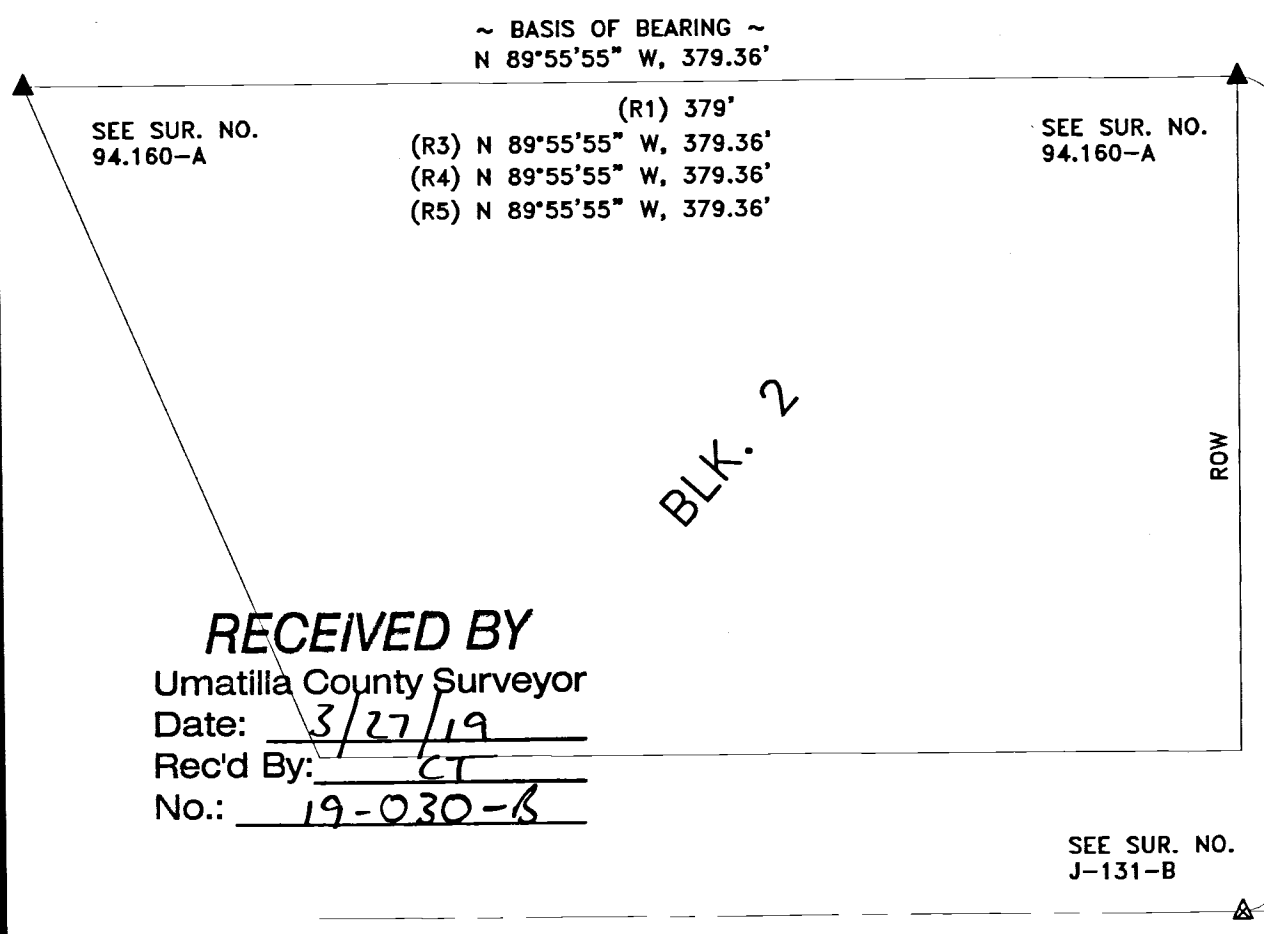
OREGON  
JULY 12, 2005  
KEITH P. PRIMM  
48490

EXPIRATION DATE: 12/31/20

DATE 26 MAR 19

PRIMM LAND SURVEYING, INC.

P.O. BOX 1322, 1340 N.E. 4TH  
HERMISTON, OR 97838  
BU1 (541) 564-7887  
FAX (541) 567-8020  
brit@primmlandsurveying.com  
keith@primmlandsurveying.com



RECEIVED BY  
Umatilla County Surveyor  
Date: 3/27/19  
Rec'd By: CT  
No.: 19-030-8

CLIENT: CHIEF SCOTT STANTON UCFD1

SW 1/4 OF SEC. 32 TWP. 4 N., RNG. 29 E.W.M

PROJECT: RECORD OF SURVEY ON LOT 7 & 8, BLOCK 13 OF THE PLAT OF STANFIELD RECORDED AS BOOK 3 PAGE 30 UMATILLA COUNTY SUBDIVISION PLATS.

JOB #: 1903002  
DATE: 12 MAR 19  
FB/PG: 41/16-17  
SHEET: 1 OF 1  
DRAWN: KPP  
APPROVED: KPP