



SCALE: 1"=200'

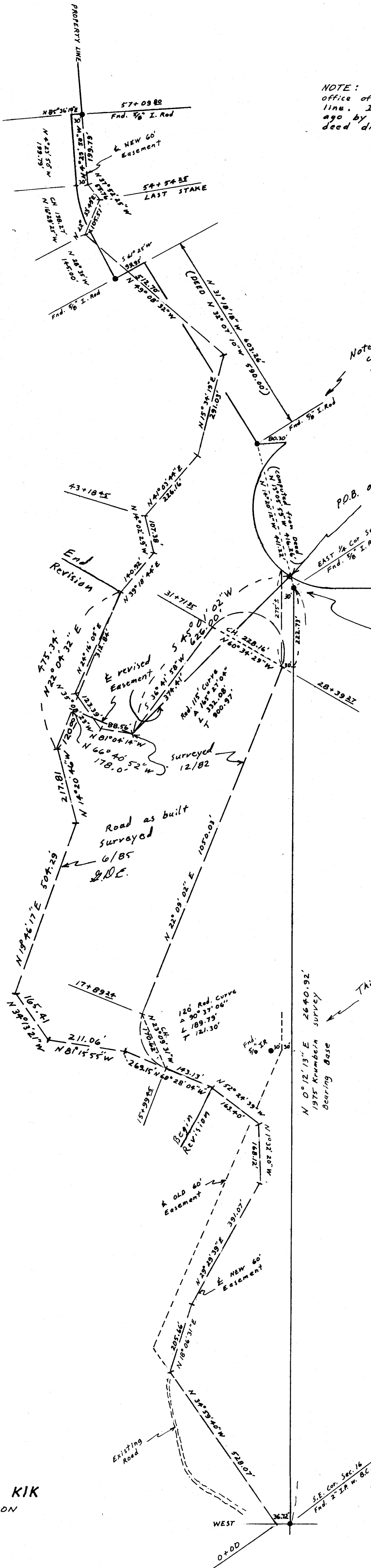
NOTE: there is no record in the county Surveyor's office of the 5/8" Iron rods found on the property line. I believe they were set about 12 years ago by Wayne Harris Co. They do not fit the deed distances by as much as 13 feet.

Note: This 5/8" IR has a pile of rocks on concrete to it but sits loose on the ground & lies N60°15'28"E 6.74' from where this map shows. 7/11/85 DE

P.O.B. of 60' Easement L.O. N45°0'15"W 30.00 ft. and N45°0'15"W 15 ft. ± from E 1/4 cor. Sec. 16. 7/11/85 DE

Note: I replaced the 5/8" IR in conc. with a 5/8" IR with an alum tag stamped 951. it is 30" long. The first one was removed by a farming operation. 7/11/85 GDE.

This IR was set by Krambein in 1975 for Conforth



REGISTERED PROFESSIONAL LAND SURVEYOR
G. DENNIS EDWARDS
951

RECEIVED BY
Umatilla County Surveyor
Date: 2/8/17
Rec'd By: CT
No.: 17-028-6

SURVEY FOR AL CONFORTH & CHARLIE KIK
IN SEC. 16, T5N, R29E, W.M., UMATILLA COUNTY, OREGON
12/6/82 JOB# 58212075
REVISED 7/2/85
EDWARDS SURVEYING 547-3336
PO. BOX 763 HERMISTON, OR.