

TWN 4N - R 29E  
(88.5 - 5841)

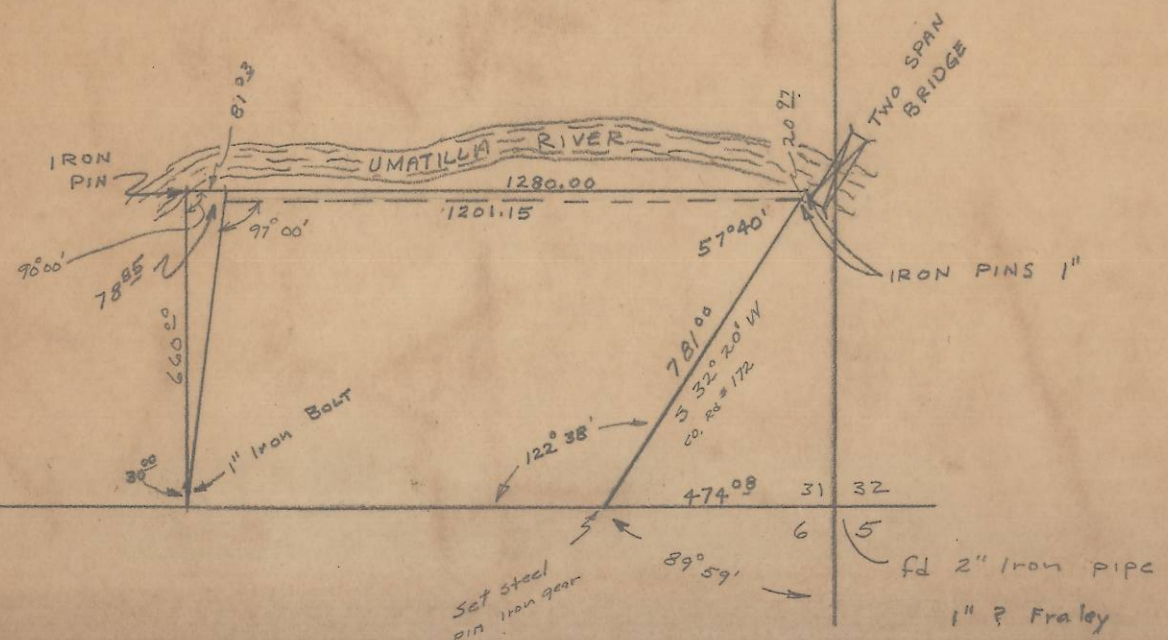
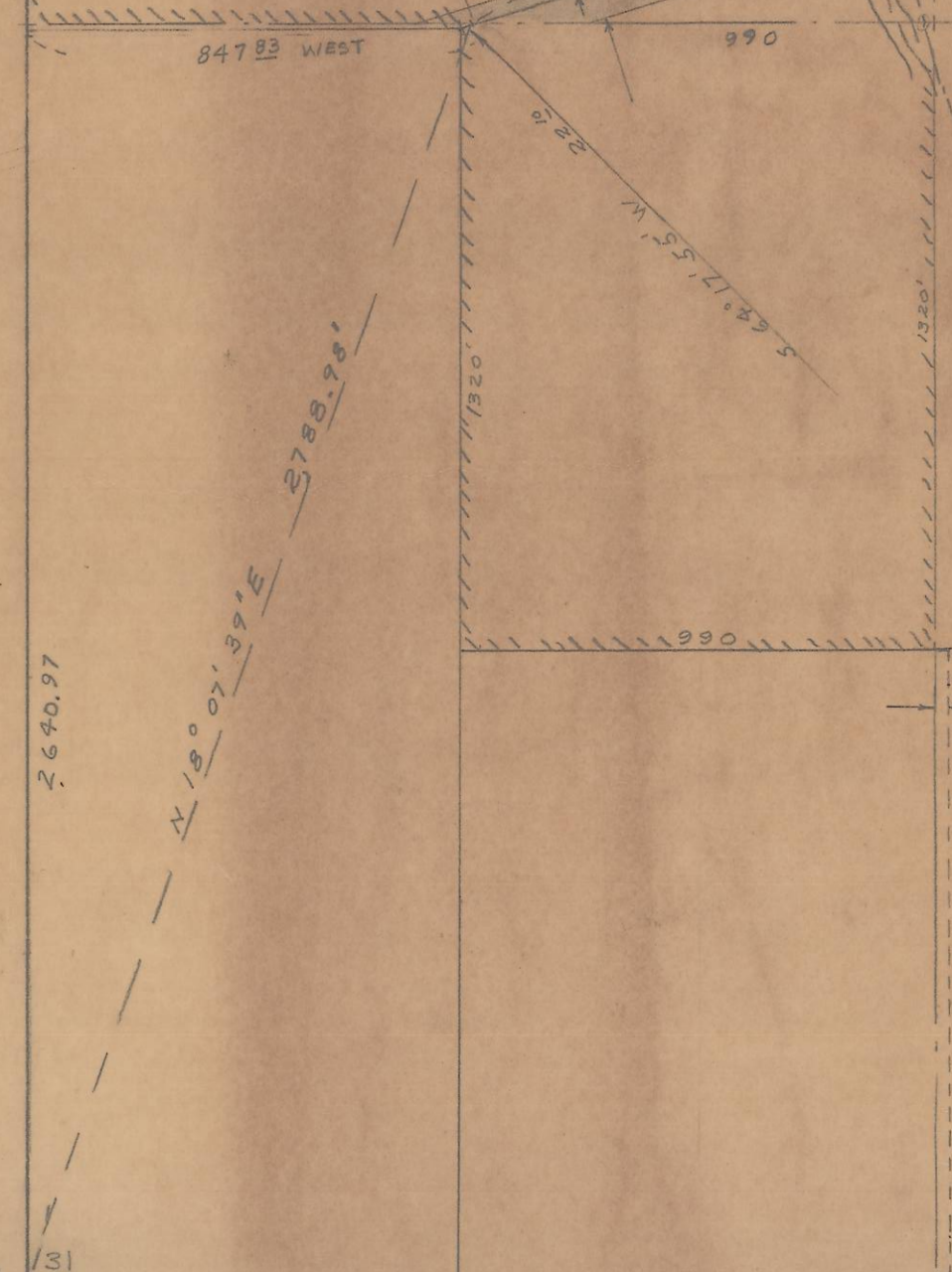
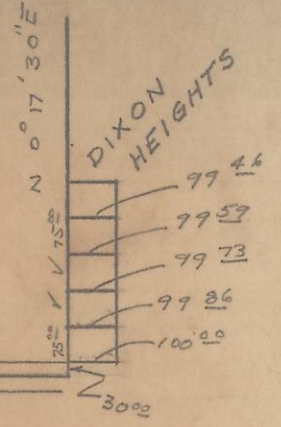
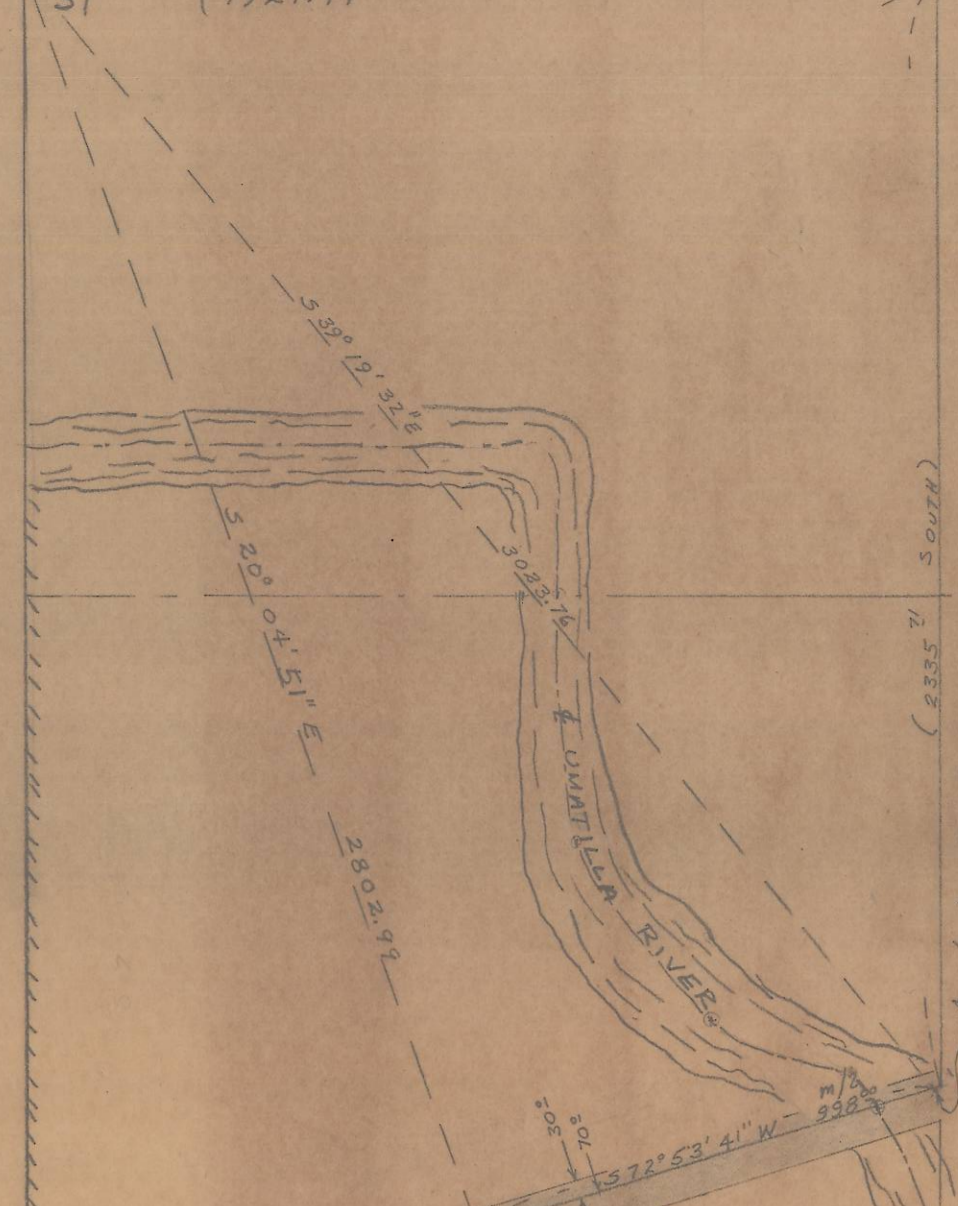
N 89° 49' W 5840.7

1 1/2" Iron Pin

2641.35  
S 89° 49' E

N 1/2 Cor  
Sec 32

Hub  
30  
Corner  
Found  
36 31 (1927.14 EAST)



RECEIVED BY  
Umatilla County Surveyor  
Date: 5/30/2013  
Rec'd By: M.K.  
No.: 13-165-B

MS2  
CEWM