

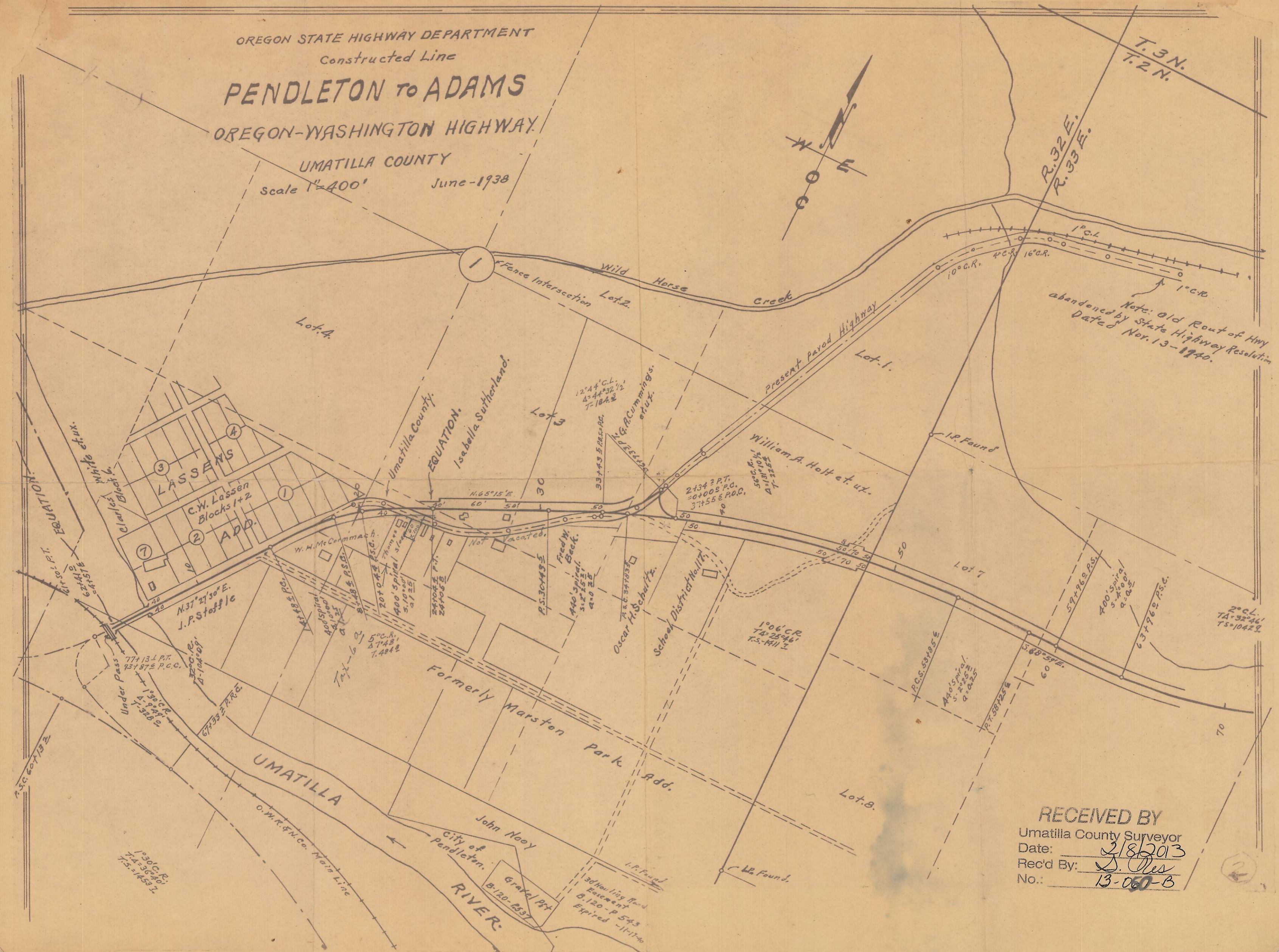
OREGON STATE HIGHWAY DEPARTMENT
 Constructed Line
PENDLETON TO ADAMS
 OREGON-WASHINGTON HIGHWAY

UMATILLA COUNTY
 Scale 1"=400' June-1938



T.3N.
T.2N.

R.32 E.
R.33 E.



Note: Old Rout of Hwy abandoned by State Highway Resolution Dated Nov. 13-1940.

RECEIVED BY
 Umatilla County Surveyor
 Date: 2/8/2013
 Rec'd By: S. Pres
 No.: 13-060-B

2