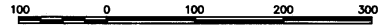


NOTE: AT THE INTERSECTION OF MILL ST. AND SE 9TH. AVE. A MONUMENT CASE WAS FOUND. THIS CASE WAS EXCAVATED TO A DEPTH OF 2.5'-3' AND NO MONUMENT WAS FOUND.

RECORD OF SURVEY FOR SURVEY MONUMENT REPLACEMENT

LOCATED IN THE NORTHWEST 1/4, AND IN THE NORTHEAST 1/4, AND IN THE SOUTHEAST 1/4 OF SECTION 12, TOWNSHIP 5 NORTH, RANGE 35 EAST, WILLAMETTE MERIDIAN, UMATILLA COUNTY, OREGON



SCALE: 1" = 100'

BASIS OF BEARINGS

SEE SURVEY DATUM STATEMENT

LEGEND

- ⊕ FOUND MONUMENT AS DESCRIBED AND REPLACED AS FOLLOWS:
AT THE FOUND MONUMENT LOCATION, SET A 5/8"x30" IRON ROD (CONCRETE REINFORCING ROD) WITH 1 1/2" DIAMETER ALUMINUM CAP, MARKED: "APA OR2049 WA41295". MONUMENT IS SET IN CONCRETE AND IS FLUSH WITH THE ROADWAY SURFACE.
- FOUND MONUMENT AS DESCRIBED-CURRENTLY EXISTING
- ⊙ SURVEY CONTROL MONUMENT AS DESCRIBED
- APPROXIMATE ROADWAY CENTERLINE

REFERENCE MATERIAL

UMATILLA COUNTY SURVEY RECORDS:

- SURVEY NO. M-112-B
- SURVEY NO. O-39-A
- SURVEY NO. O-1000-A
- SURVEY NO. S-92-A
- SURVEY NO. 85-117-A
- SURVEY NO. 92-136-C
- SURVEY NO. 99-152-B

SURVEY NARRATIVE

THIS SURVEY WAS PERFORMED AT THE REQUEST OF THE CITY OF MILTON-FREEWATER FOR THE PURPOSE OF REPLACING CERTAIN SURVEY MONUMENTS WHICH WERE REMOVED DURING THE CONSTRUCTION OF IMPROVEMENTS ALONG MILL STREET.

BEGINNING IN 2010, VARIOUS SURVEYS WERE PERFORMED ALONG MILL STREET IN THE CITY OF MILTON-FREEWATER, BETWEEN SE 3RD AVENUE AND SE 15TH AVENUE, IN PREPARATION FOR THE DESIGN AND CONSTRUCTION OF STREET IMPROVEMENTS. INCLUDED IN THESE SURVEYS WAS WORK INTENDED TO PRESERVE THE LOCATIONS OF ANY RECORD SURVEY MONUMENTS WHICH WERE LOCATED IN THE PROJECT AREA AND WHICH MAY BE SUBJECT TO DISTURBANCE OR REMOVAL. THE SURVEY RECORDS OF UMATILLA COUNTY WERE REVIEWED AND A FIELD SEARCH WAS MADE THROUGHOUT THE PROJECT AREA FOR ALL IDENTIFIED RECORD MONUMENTS. THE RECOVERED MONUMENTS WERE DESCRIBED AND THEIR LOCATIONS WITHIN THE PROJECT DETERMINED BY REDUNDANT SURVEY MEASUREMENTS.

ON COMPLETION OF THE CONSTRUCTION ACTIVITIES IN THE FALL OF 2011, AN ADDITIONAL FIELD SURVEY WAS CONDUCTED, AND IT WAS DETERMINED THAT ONLY TWO OF THE RECOVERED RECORD MONUMENTS HAD BEEN REMOVED. THE REMAINING RECOVERED MONUMENTS WERE STILL IN PLACE, ALTHOUGH SOME MAY HAVE BEEN COVERED BY NEW ASPHALT PAVEMENT.

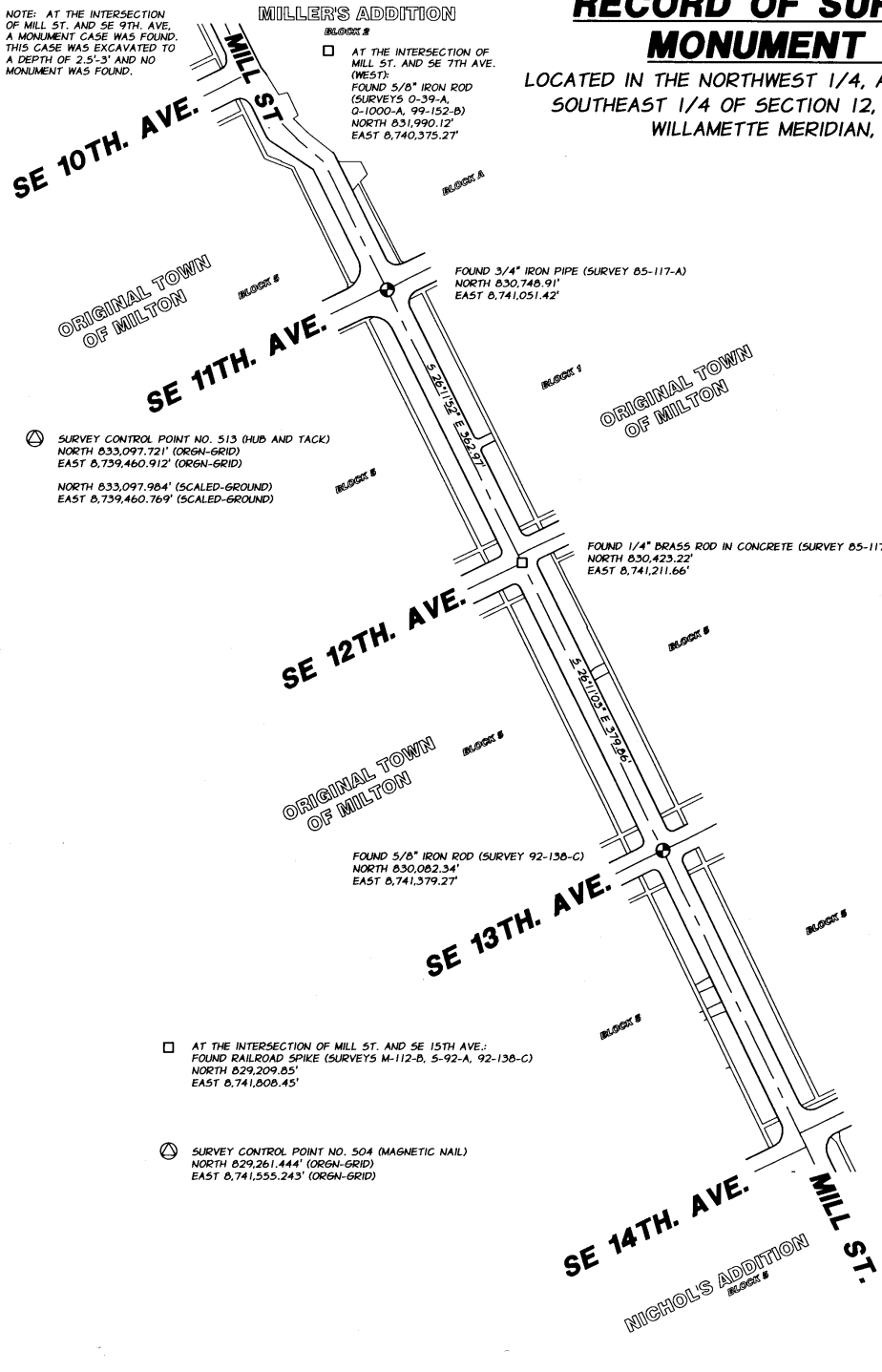
THE POSITIONS OF THE TWO REMOVED MONUMENTS ARE IDENTIFIED ON THIS DRAWING AND NEW SURVEY MONUMENTS WERE SET AT THE IDENTICAL FOUND LOCATIONS.

SURVEY DATUM STATEMENT

THE "ORGN-GRID" COORDINATES SHOWN FOR POINT NUMBERS 504 AND 513 REPRESENT POSITIONS ON THE OREGON STATE PLANE COORDINATE SYSTEM-NORTH ZONE (NAD 83/OC96/NEPCH2002) AND WERE DETERMINED BY GPS OBSERVATIONS UTILIZING THE FACILITIES OF THE OREGON REAL-TIME GPS NETWORK (ORGN). ALL OTHER COORDINATE VALUES REPRESENT LOCAL POSITIONS DERIVED FROM GPS AND CONVENTIONAL SURVEY MEASUREMENTS TAKEN AT GROUND ELEVATION, UTILIZING THE COORDINATES OF POINT NO. 504 AS THE ORIGIN OF A LOCAL COORDINATE DATUM. TO CONVERT THE LOCAL COORDINATES TO EQUIVALENT GRID COORDINATES, COMPUTE THE DIRECTION/DISTANCE FROM POINT NO. 504 TO THE LOCAL COORDINATE POINT, APPLY A COMBINED SCALE FACTOR OF 0.999931568 TO THE COMPUTED DISTANCE, AND COMPUTE THE GRID COORDINATES OF THE LOCAL POINT AT THE COMPUTED DIRECTION AND SCALED DISTANCE FROM POINT NO. 504. ALL COORDINATE VALUES ARE IN UNITS OF INTERNATIONAL SURVEY FEET.

ALL DIRECTIONS DERIVED FROM THE LISTED COORDINATES ARE GRID, RELATIVE TO THE DIRECTION OF THE OREGON STATE PLANE COORDINATE SYSTEM-NORTH ZONE. THE CONVERGENCE ANGLE BETWEEN GRID AND GEODETIC DIRECTIONS AT POINT NO. 504 IS +1° 30' 12.3".

THIS SURVEY WAS CONDUCTED USING A TOPCON GPS SYSTEM CONSISTING OF LEGACY-H AND HIPER DUAL FREQUENCY RECEIVERS WITH A STANDARD DEVIATION ON IGM + 1.0 PPM AND A TRIMBLE 5600 TOTAL STATION WITH A STANDARD DEVIATION OF 0'00'03" ANGULAR AND ± 3PPM IN DISTANCE.



AT THE INTERSECTION OF MILL ST. AND SE 7TH AVE. (WEST):
FOUND 5/8" IRON ROD (SURVEYS O-39-A, O-1000-A, 99-152-B)
NORTH 831,990.12'
EAST 8,740,375.27'

FOUND 3/4" IRON PIPE (SURVEY 85-117-A)
NORTH 830,748.91'
EAST 8,741,051.42'

FOUND 1/4" BRASS ROD IN CONCRETE (SURVEY 85-117-A)
NORTH 830,423.22'
EAST 8,741,211.66'

FOUND 5/8" IRON ROD (SURVEY 92-136-C)
NORTH 830,082.34'
EAST 8,741,379.27'

AT THE INTERSECTION OF MILL ST. AND SE 15TH AVE.:
FOUND RAILROAD SPIKE (SURVEYS M-112-B, S-92-A, 92-136-C)
NORTH 829,209.85'
EAST 8,741,808.45'

SURVEY CONTROL POINT NO. 504 (MAGNETIC NAIL)
NORTH 829,261.444' (ORGN-GRID)
EAST 8,741,555.243' (ORGN-GRID)

BROOKSIDE SUBDIVISION
BLOCK #

RECEIVED BY
Umatilla County Surveyor
Date: 5/7/2012
Rec'd By: *A. Ples*
No.: *42,800-B*

REGISTERED PROFESSIONAL LAND SURVEYOR

Michael B. Posada
OREGON
JAN. 20, 1998
MICHAEL B. POSADA
02849 LS
EXPIRES 12-31-12

DATED: 04-19-12

RECORD OF SURVEY SURVEY MONUMENT REPLACEMENT CITY OF MILTON-FREEWATER, OREGON	
LOCATED IN THE NW1/4, NE1/4, AND SE1/4 OF SECTION 12, T. 5 N., R. 35 E. WILLAMETTE MERIDIAN, UMATILLA COUNTY, OREGON	
FOR: CITY OF MILTON-FREEWATER	722 SOUTH MAIN ST. MILTON-FREEWATER, OR 97862
SCALE: 1" = 100'	SHEET 1/1
DATE: APRIL, 2012	Anderson perly Associates, Inc. <small>ENGINEERING SURVEYING NATIONAL RESOURCES</small>
JOB NO. 201-26	1901 N. FIR ST. LA GRANDE, OR 97850 (541) 963-8309