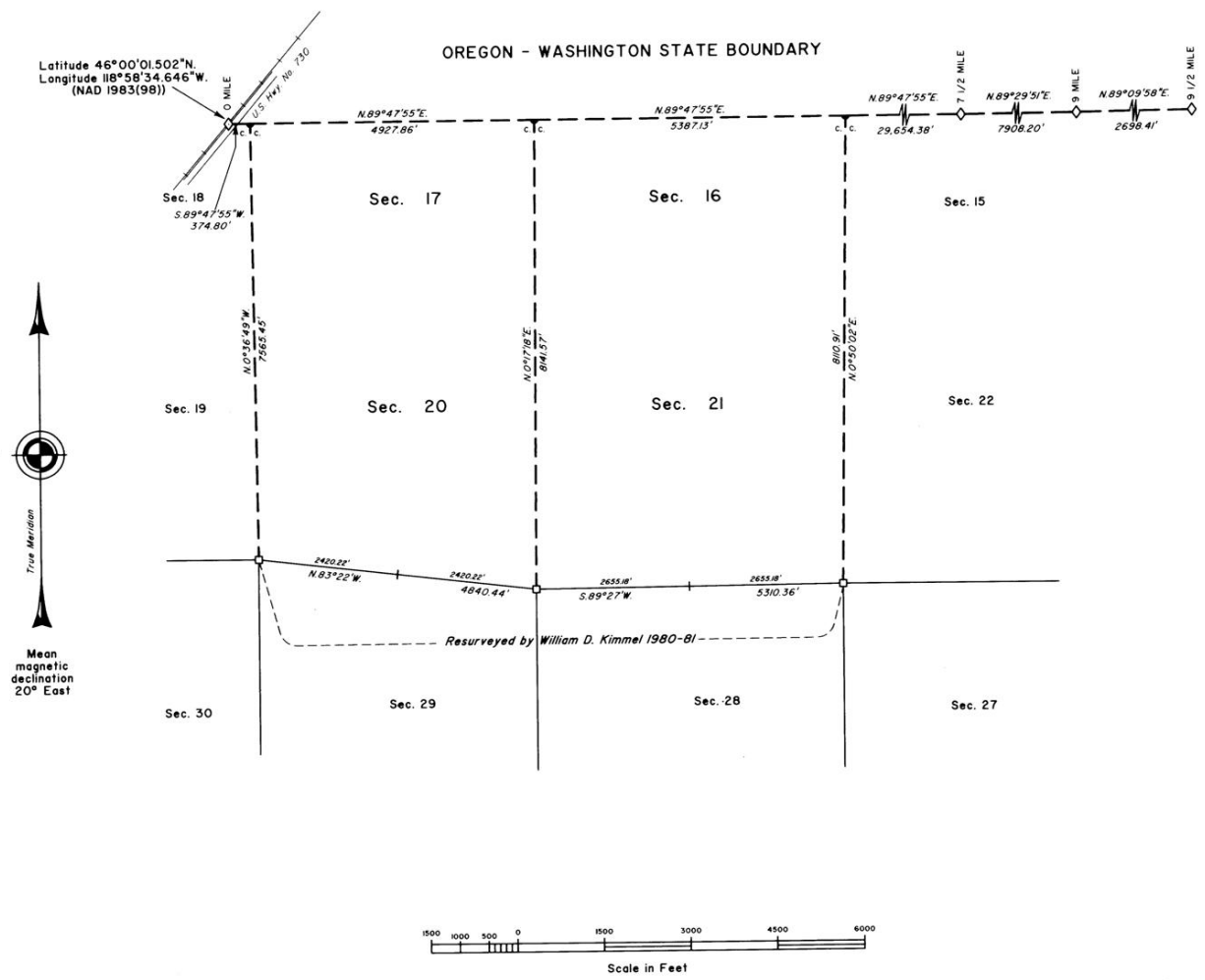


# TOWNSHIP 6 NORTH, RANGE 31 & 32 EAST, OF THE WILLAMETTE MERIDIAN, OREGON

## CORRECTIVE RETRACEMENT



A history of surveys is contained in the field notes.

This plat represents a corrective retracement of a portion of the Oregon - Washington State Boundary through ranges 31 and 32 east and a portion of the subdivisional lines, T. 6 N., R. 31 E., Willamette Meridian, Oregon, designed to restore the corners in their true original locations according to the best available evidence.

Measured distances and directions have been adjusted by Trimble Geomatics Office (TGO), computer software that incorporates a least squares adjustment routine. The adjusted bearings and distances are reported to the nearest second and 0.01 foot.

The lottings and areas are as shown on the plat approved June 23, 1875.

The survey was executed by Bryan S. Seibold, Cadastral Surveyor, beginning May 5, 2003, and completed May 28, 2003, pursuant to Special Instructions dated August 19, 2002, under Group Number 2032, Oregon.

There is no timber in this area.

**LEGEND**

- ◇ Original corner previously remonumented
- Corner previously reestablished
- Corner established or reestablished this survey

UNITED STATES DEPARTMENT OF THE INTERIOR  
BUREAU OF LAND MANAGEMENT  
Portland, Oregon September 7, 2004

This plat is strictly conformable to the approved field notes, and the survey, having been correctly executed in accordance with the requirements of law and the regulations of this Bureau, is hereby accepted.

For the Director  
*Mary J M Hartzel*  
Chief Cadastral Surveyor of Oregon