

RECORD OF SURVEY

FOR
BONNEVILLE POWER ADMINISTRATION
IN SECTIONS 9 & 16, T.5N., R.28E., W.M.,
UMATILLA COUNTY, OREGON
SHEET 1 OF 2

SPECIAL EXCEPTIONS CONTINUED

- Well Agreement, including the terms and provisions thereof, between R.E. Woodward, Jeannine Woodward, Elden S. Jenks, and Glenna O. Jenks and Tom and Lori Hampton recorded May 31, 1995 in Reel 271, Page 1248, Umatilla County Microfilm Records, and re-recorded July 21, 1995 in Reel 274, Page 180, Umatilla County Microfilm Records.
- Temporary Easement for Sewer Line Construction, including the terms and provisions thereof, from Thomas Hampton aka Tom Hampton, R.E. Woodward and Jeannine Woodward and Elden S. Jenks and Glenna O. Jenks to the City of Umatilla, recorded April 16, 1999 in Reel 349, Page 226, Umatilla County Microfilm Records.
- Sewer Line Easement, including the terms and provisions thereof, from Thomas Hampton aka Tom Hampton, R.E. Woodward and Jeannine Woodward and Elden S. Jenks and Glenna O. Jenks to the City of Umatilla, recorded April 16, 1999 in Reel 349, Page 227, Umatilla County Microfilm Records.
- Right of Way for Electric Transmission and Distributing Lines, including the terms and provisions thereof, in favor of Umatilla Electric Cooperative Association, Recorded November 23, 1994 in Reel 263, Page 639, Umatilla County Microfilm Records.

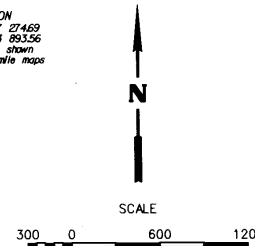
SURVEYOR'S NARRATIVE

This survey was performed at the request of Bonneville Power Administration (BPA) as part of the McNary - John Day project. Original field ties were done in 2002 - 2003 with additional work done in 2009 - 2011. The property was acquired from Gary L. Moe as part of the McNary switch yard expansion project as described in Bonneville Power Administration Land Acquisition Request Tract No. MC-D-1-A-35, and described in AmenTitle Report dated 08-09-2010 as Report Number 0063912. The property is bounded on the north by the Union Pacific Railroad Right of Way, to the east by the Sectional lines, to the south by Scafehorn Road. The property is bisected by the Brownell Ditch as described in Warranty Deed 159374. There are a few ambiguities in the parcel description which are resolved by the bounding calls and occupation. Sectional and Right of Way monuments were found as shown and can be found on Bonneville Power Administration McNary Switchyard & Powerhouse plans drawing 33-01-340-D4 dated 03-21-52 and last updated 10-11-96 and Partition Plat 2000-20. No monuments were found at the property corners and have been set as shown.

REGISTERED
 PROFESSIONAL
 LAND SURVEYOR

OREGON
 SEPTEMBER 26 2000
 RONALD M. HODGE
 84243
 09-29-2011
 RENEWAL DATE: JUNE 30 2015

RECORDED IN
 Umatilla County Survey
 Date 9-11
 Rec'd By
 No. N-102-B



SPECIAL EXCEPTIONS

- Telephone Right of Way Easement, including the terms and provisions thereof, in favor of Pacific Telephone and Telegraph Company, recorded August 10, 1922, in Book 118, Page 128, Umatilla County Deed Records.
- Telephone Right of Way Easement, including the terms and provisions thereof, in favor of Pacific Telephone and Telegraph Company, recorded August 10, 1922, in Book 118, Page 130, Umatilla County Deed Records.
- Telephone Right of Way Easement, including the terms and provisions thereof, in favor of Pacific Telephone and Telegraph Company, recorded May 27, 1947, in Book 180, Page 459, Umatilla County Deed Records.
- Right of Way for Electric Transmission and Distributing Lines, including the terms and provisions thereof, in favor of Umatilla Electric Cooperative Association, Recorded March 14, 1949 in Book 188, Page 387, Umatilla County Deed Records.
- Easement, including the terms and provisions thereof, in favor of United States of America, recorded April 7, 1949, in Book 188, Page 523, Umatilla County Deed Records.
- Easement, including the terms and provisions thereof, in favor of United States of America, recorded August 19, 1953, in Book 213, Page 196, Umatilla County Deed Records.
- Right of Way for Electric Transmission and Distributing Lines, including the terms and provisions thereof, in favor of Pacific Power and Light Company, recorded February 3, 1969, in Book 298, Page 477, Umatilla County Deed Records.
- Easement, including the terms and provisions thereof, in favor of City of Umatilla, recorded in Book 352, Page 31, Umatilla County Deed Records.
- Easement, including the terms and provisions thereof, in favor of City of Umatilla, recorded August 8, 1974, in Book 352, Page 78, Umatilla County Deed Records.
- Easement, including the terms and provisions thereof, in favor of United States of America, recorded February 7, 1978, in Reel 29, Page 355, Umatilla County Microfilm Records.
- The rights of the public in roads and highways.
- Perpetual Easement to Use, Operate, and Maintain two road crossings, a foot bridge, and a crossing for pipelines, including the terms and provisions thereof, as disclosed in Deed to the United States of America and its assigns, recorded December 12, 1990 in Reel 200, Page 893, Umatilla County Microfilm Records.

J9

Corner of Sections 8, 9, 16 & 17

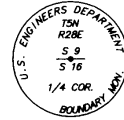
2009 - Found 2 1/2" brass cap on 2" galvanized pipe, flush with ground. A steel post with sign bears 2.5' south.



J11

1/4 Corner of Sections 9/16

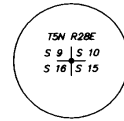
2009 - Found 3/4" brass cap in concrete, 1.0' below ground. A steel post with marker bears 3' west.



J13

Corner of Sections 9, 10, 15 & 16

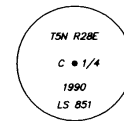
2009 - Found 3/4" brass cap in concrete, 0.9' below ground.



L11

Center of Section 16

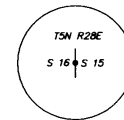
2009 - Found 2 1/2" brass cap, flush with ground. A steel post bears 2' north.



L13

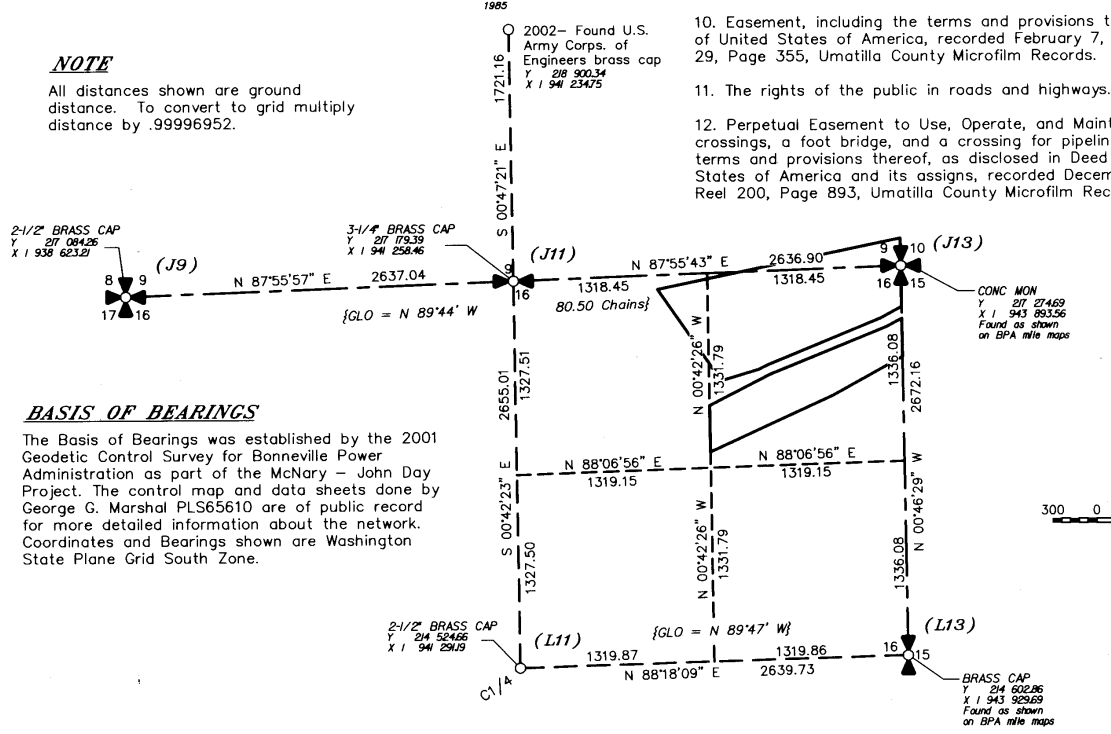
1/4 Corner of Sections 15/16

2009 - Found brass cap, 0.8' below ground. A T-post bears 14.2' east.



NOTE

All distances shown are ground distance. To convert to grid multiply distance by .99996952.



BASIS OF BEARINGS

The Basis of Bearings was established by the 2001 Geodetic Control Survey for Bonneville Power Administration as part of the McNary - John Day Project. The control map and data sheets done by George G. Marshal PLS65610 are of public record for more detailed information about the network. Coordinates and Bearings shown are Washington State Plane Grid South Zone.

Sections	Township	Range
9,16	5 N	28 E

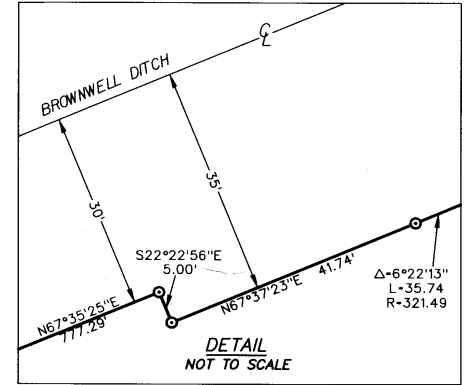
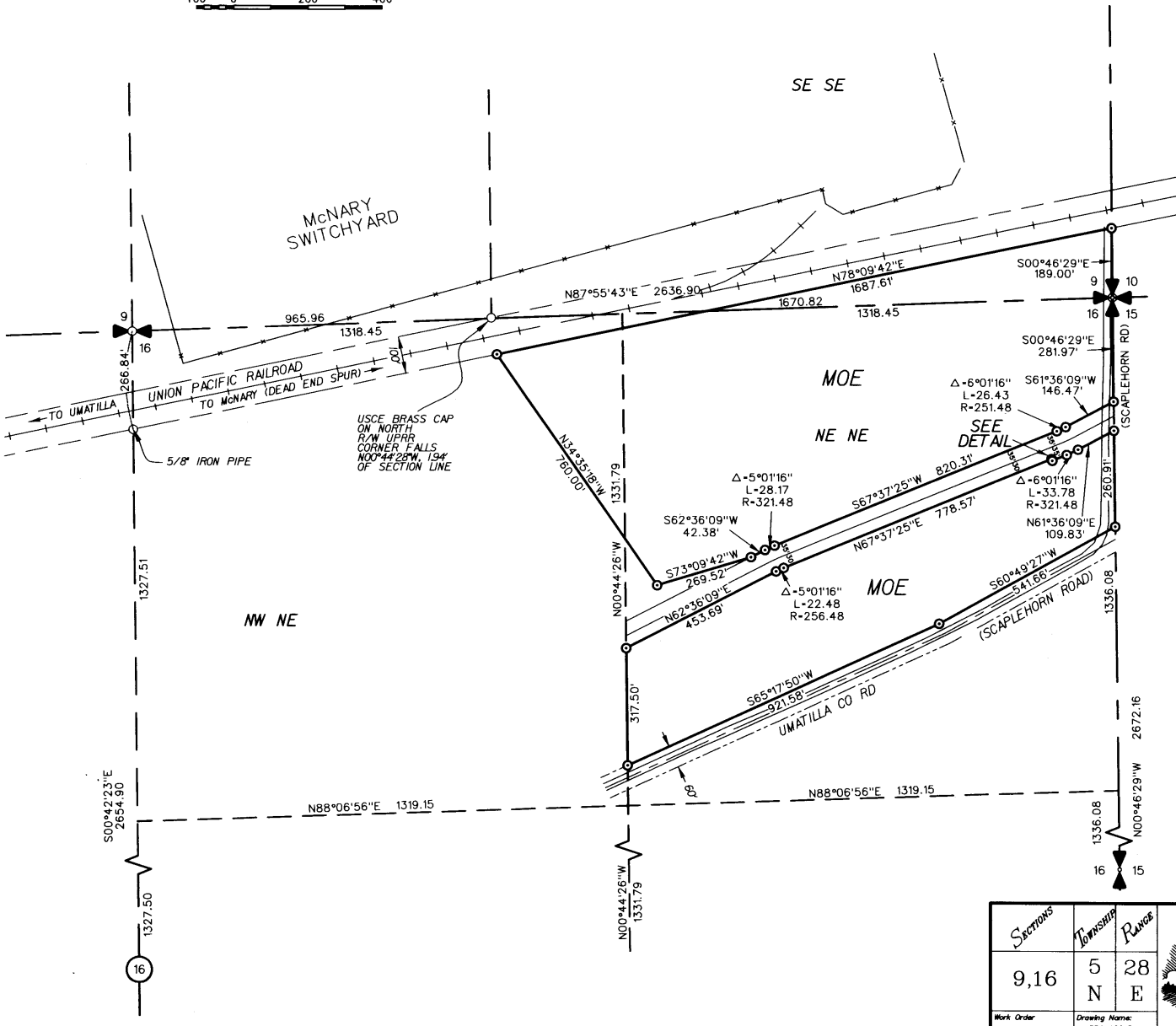
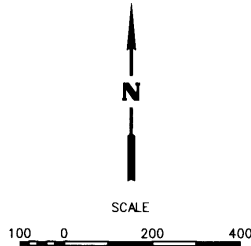


RECORD OF SURVEY FOR	
Bonneville Power Administration	
COLUMBIA SURVEYS, PLLC 7600 NE 41st Street, Suite 175 Vancouver, WA 98662 1-877-563-2192	
Scale: 1 in. = 600 ft.	Drawn By:
Checked By:	Date:
Work Order: 284586	Drawing Name: BPA ACO ROS
Date: 1-11-11	Sheet: 1 OF 2

RECORD OF SURVEY

FOR
 BONNEVILLE POWER ADMINISTRATION
 IN SECTIONS 9 & 16, T.5N., R.28E., W.M.,
 UMATILLA COUNTY, OREGON

SHEET 2 OF 2



- LEGEND**
- Section Corner / Quarter Corner as noted
 - Set Monument, as noted
Note: BPA Mon- 3 1/4" X 30" Alum. Monument
 - Found 1/2" Iron Pipe Monument - LS2850 unless otherwise noted
 - Set 5/8" X 30" Iron Rebar with Plastic Cap HODGE LS64248
 - Fence

NOTE
 All distances shown are ground distance. To convert to grid multiply distance by 99996952.

REGISTERED
 PROFESSIONAL
 LAND SURVEYOR

OREGON
 SEPTEMBER 26 2006
 RONALD M. HODGE
 64248

RENEWAL DATE: JUNE 30 2013
 Date: 9-11
 Drawn By: [Signature]
 11-162-B

SECTIONS	Township	Range
9,16	5 N	28 E
Work Order 264566	Drawing Name: BPA ACQ RDS	

RECORD OF SURVEY FOR Bonneville Power Administration

COLUMBIA SURVEYS, PLLC
 7600 NE 41st Street, Suite 175
 Vancouver, WA 98662
 1-877-563-2192

Scale: 1 in. = 200 ft.
 Checked By: [Signature]
 Date: 1-11-11
 Drawn By: MSS/KLK
 Sheet: 2 OF 2