

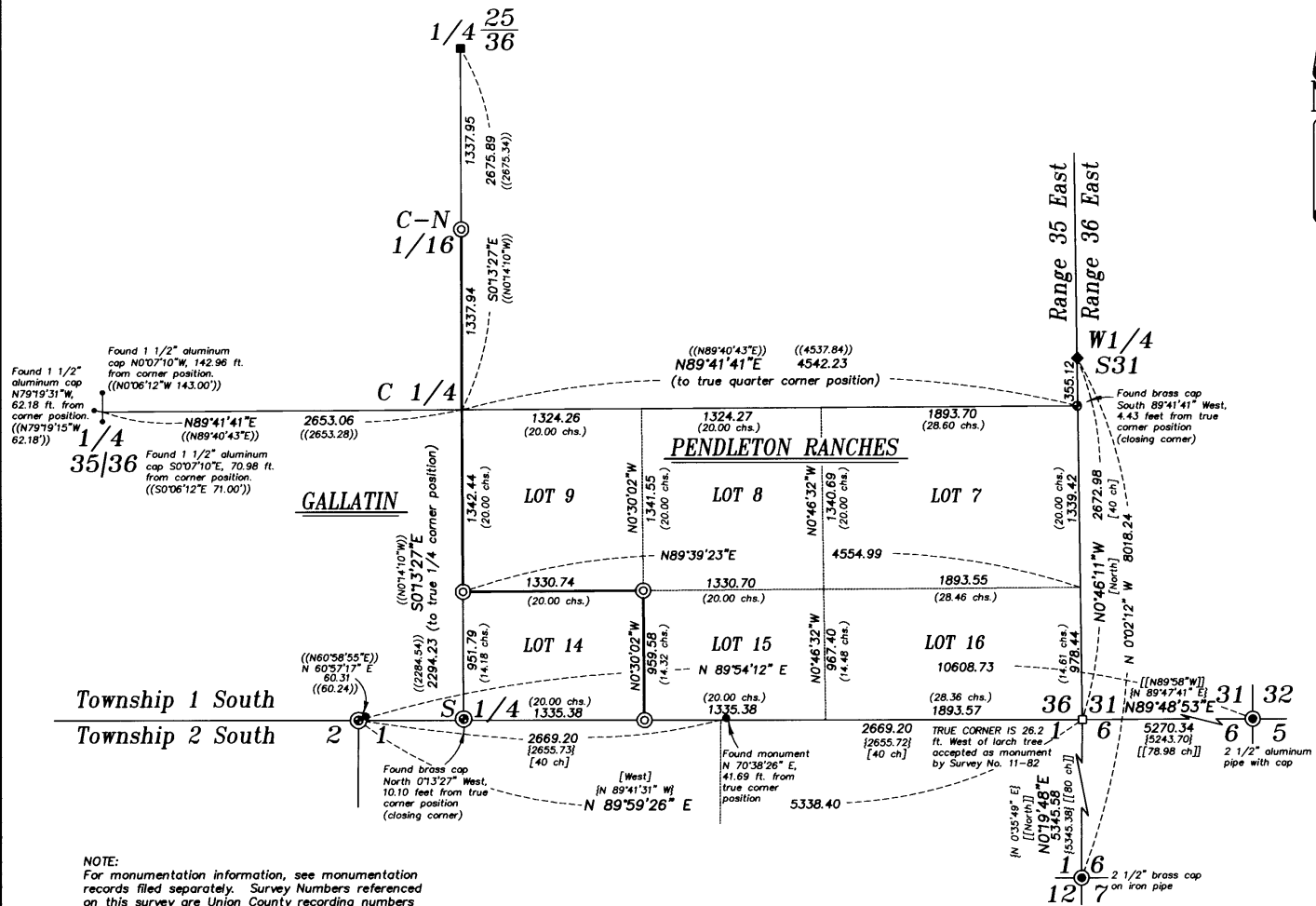
# BASIS OF BEARING

The bearing between the corner common to Section 5 and 6, Township 2 South, Range 36 East and Sections 31 and 32, Township 1 South, Range 36 East and the standard corner common to Section 1 and 2 of Township 2 South, Range 35 East being North 89°54'12" East, as per Survey Number 027-2003

SCALE: 1" = 600'

## LEGEND

- Found 1 1/2" iron pipe with 3" brass cap, as per Umatilla County Monumentation Records
- ⊙ Found 1 1/2" iron pipe with 2 1/2" brass cap, set by Survey Number 026-1992
- Found 1 1/2" iron pipe with 2 1/2" brass cap, set by Survey Number 027-1992
- ⋯ Found 2 1/2" Aluminum cap as reference to 1/4 corner, set by Survey Number 044-1994
- Found 5/8" iron pin with 2" aluminum cap, set by Survey Number 11-82
- ◆ Found 2" pipe with 3" brass cap
- ⊙ Found monument as described, as per Union County monumentation records
- Set 2 1/2" Aluminum pipe with cap marked as per Union County Monumentation Records
- ⊙ Set 5/8" x 30" iron pin with 2 1/2" Aluminum cap marked as per Union County Monumentation Records
- [ ] Record measurement as per field notes for GLO Contract No 397, executed by Jacob Cooper, dated September 22, 1881
- ( ) Record measurement as per field notes for GLO Contract No 451, executed by Rufus Moore, dated June 12, 1882
- [[ ]] Record measurement as per field notes for GLO Contract No. 120, executed by John Hurlburt, dated August 5, 1873
- { } Record measurement as per Survey Number 11-82
- (( )) Record measurement as per Survey Number 044-1994



NOTE:  
For monumentation information, see monumentation records filed separately. Survey Numbers referenced on this survey are Union County recording numbers unless otherwise specified.

### REFERENCE MATERIAL

- Union County Monumentation Records
- Umatilla County Monumentation Records
- Survey Number 47-80
- Survey Number 11-82
- Survey Number 026-1992
- Survey Number 027-1992
- Survey Number 044-1994
- Survey Number 043-1995
- Survey Number 027-2003
- Field notes for GLO Contract No. 120, executed by John Hurlburt, dated August 5, 1873
- Field notes for GLO Contract No 451, executed by Rufus Moore, dated June 12, 1882
- Field notes for GLO Contract No 397, executed by Jacob Cooper, dated September 22, 1881
- Umatilla County Old Book Survey Book 1, Page 312

### DEED REFERENCES

Microfilm Document Number 20045925

### NARRATIVE

This survey was done at the request of Russ Hegedus, on behalf of Forest Capital Partners LLC. Mr. Hegedus wanted the sectional subdivision corners of the property located and marked. I recover the monuments shown hereon. Section 36 was done by a completion survey done by Rufus Moore by GLO Contract No. 451, dated June 12, 1882. The Moore survey lotted Section 36 against T2S, R35E and T1S, R36E. The quarter section corners at the South and East ends of the section were not set by the original GLO survey. A survey by the county surveyor for J.F. Huff, H.J. Taylor and Corbet, dated June 9, 1891 and recorded in Old Book Survey Book #1 set said quarter corners. These were found and monumented to current standard by a survey by Andrew Blachly for State Parks recorded as Union County Survey Numbers 026-1992 and 027-1992. These monuments are not on the section line, and I treat them as closing corners and extend the center section lines to the senior section line to establish the true position. However, since they are not original GLO corners, I use the established true positions for the proportion of the government lots instead of the monument. I establish the corners along the North line of lots 7, 8 and 9 and those along the West line of Lots 9 and 14 by proportion along the center section lines. The corner common to Lots 8, 9, 14 and 15 I establish by intersection. The township corner was placed by Survey Number 11-82 by double proportion from the standard corner to Sections 4 and 5, Township 2 South, Range 35 East. Survey Number 026-1992 placed the standard corner between sections 1 and 2 of said township and range by ties to the railroad. This effectively changes the proportionate position of the township corner, as described in Survey Number 027-2003. The narrative for said survey said that State Parks has been informed and is aware of the situation and has agreed to remedy the situation, but as of the time of this survey, none has been made. I therefore reset the township corner at proper double proportionate position. I find no other unusual conditions with this survey.

REGISTERED  
PROFESSIONAL  
LAND SURVEYOR

*Jeffrey S. HSU*  
OREGON  
JUNE 2, 2010  
JEFFREY S. HSU  
83571

Renewal Date: June 30, 2011

<b>BAGETT, GRIFFITH &amp; BLACKMAN</b> 2006 Adams Avenue, LaGrande, Oregon Map of Survey	
Situate in Section 36, Township 1 South, Range 35 East of the Willamette Meridian	
UMATILLA/UNION COUNTY	
SURVEYED FOR	Forest Capital Partners LLC
SURVEYED BY	J. S. H.
Scale: 1" = 600'	Drawn by: J. S. H. 11/16/11

Umatilla County Survey  
Date: 6-11  
Drawn by: KK  
11-62-5