

RECORD OF SURVEY
A PORTION OF THE WALLA WALLA-PENDLETON NO. 1 TRANSMISSION LINE
 FOR THE BONNEVILLE POWER ADMINISTRATION

SITUATED IN:
 THE SOUTHEAST QUARTER OF SECTION 32, TOWNSHIP 6 NORTH, RANGE 35 EAST
 AND
 THE NORTH HALF OF SECTIONS 5 & 6, TOWNSHIP 5 NORTH, RANGE 35 EAST
 AND
 THE NORTH HALF OF SECTIONS 1, 2 & 3, TOWNSHIP 5 NORTH, RANGE 34 EAST
 ALL IN THE WILLAMETTE MERIDIAN

UMATILLA COUNTY, OREGON
 MAY 6, 2009

NARRATIVE:

THE PURPOSE OF THIS SURVEY IS TO DEVELOP A PERMANENT RECORD OF THE LOCATION OF THE PROJECT CENTERLINE ALONG THIS PORTION OF THE BONNEVILLE POWER ADMINISTRATION'S WALLA WALLA-PENDLETON NO. 1 TRANSMISSION LINE.

THE BASIS OF BEARING FOR LINES WITHIN THIS SURVEY IS GRID, U.S. STATE PLANE COORDINATE SYSTEM, OREGON NORTH ZONE, RELATIVE TO A STATIC GPS CONTROL NETWORK SURVEY COMPLETED BY BONNEVILLE POWER ADMINISTRATION (BPA) PERSONNEL IN JULY, 2008. GPS EQUIPMENT CONSISTED OF THREE TRIMBLE 5700 GPS RECEIVERS W/ZEPHYR GEODETIC ANTENNAE AND ONE TRIMBLE 4000SSI RECEIVER W/COMPACT L1/L2 GROUND PLANE ANTENNA. GPS OBSERVATIONS WERE REDUCED AND ADJUSTED BY BPA USING TRIMBLE GEOMATICS OFFICE (TGO) SOFTWARE, CONSTRAINED TO NGS CONTROL SURROUNDING THE PROJECT AREA.

THE HORIZONTAL DATUM IS NAD83 (CORS 96) EPOCH 2004 AND THE VERTICAL DATUM IS NAVD 88.

GPS REAL TIME KINEMATIC (RTK) FIELD OBSERVATIONS WERE COMPLETED BY DEA PERSONNEL USING LEICA GPS RECEIVERS TO INFILL CONTROL SURVEY DATA AND TIE RECOVERED MONUMENTATION FROM THE PLSS, CONSTRAINED TO THE EXISTING CONTROL NETWORK.

DISTANCES SHOWN ALONG THE PROJECT CENTERLINE AS NOTED HEREON ARE GRID. STATIONING IS BASED UPON GROUND MEASUREMENTS. TO CONVERT GRID DISTANCES TO GROUND, MULTIPLY BY 1.000038206.

THE PROJECT CENTERLINE WAS DEVELOPED BY BPA SURVEYING/ENGINEERING PERSONNEL CONSIDERING THE LOCATIONS OF EXISTING STRUCTURES AND THE ASSIMILATION OF LIDAR DATA ACQUIRED IN ASSOCIATION WITH THIS PROJECT. PLANIMETRY (E.G. ROADS, FENCES, UTILITY POLES, ETC.) SHOWN HEREON HAS BEEN DERIVED FROM LIDAR ORTHO IMAGERY AND IS TO BE USED FOR RELATIONAL PURPOSES ONLY. BPA INTENDS THAT THE LOCATION OF THE TRANSMISSION CENTERLINE AS MONUMENTED AND SHOWN HEREON REPRESENTS THE "RESOLVED" ALIGNMENT FROM THE 1940 SURVEY. R/W BOUNDARIES SHOWN HEREON ARE COMPUTED AT RECORD DISTANCES FROM THIS "RESOLVED" CENTERLINE.

ONCE THE FINAL PROJECT CENTERLINE WAS DETERMINED, LOCATIONS OF TOWERS WERE DEVELOPED BY BPA STAFF USING INDUSTRY STANDARD DESIGN CONSIDERATIONS.

NARRATIVE (CONT.):

TOWER LOCATIONS WERE STAKED USING GPS RTK PROCEDURES, WITH THE FOLLOWING CAVEATS:

EACH ESTABLISHED ANGLE POINT WAS SET USING LEICA RTK STAKEOUT UTILITIES. WHERE SO INDICATED, A 5/8-INCH REBAR WAS DRIVEN FLUSH TO THE SURFACE OF THE GROUND AND A STANDARD BPA 3-1/4 INCH ALUMINUM CAP WAS AFFIXED, WHEREUPON A PRELIMINARY POSITION WAS MARKED ON THE CAP.

ON A DIFFERENT PART OF THE DAY, RELYING ON DIFFERING EPOCHS AND SATELLITE GEOMETRY, THE POSITION OF THE PRELIMINARY LOCATION WAS CHECKED, COMPARED TO THE RECORD COMPUTED POSITION FOR THE ANGLE POINT, AND THEN ADJUSTED AS NEEDED TO COINCIDE WITH THE PREVIOUSLY COMPUTED POSITION, AT WHICH POINT THE CAP WAS PUNCHED.

THIS POSITION WAS THEN RE-OBSERVED AS A CHECK ON REDUNDANCY (SOME DISTANCES ALONG THE PROJECT CENTERLINE WERE ALSO OBSERVED WITH LEICA EDM SURVEY EQUIPMENT FOR VERIFICATION).

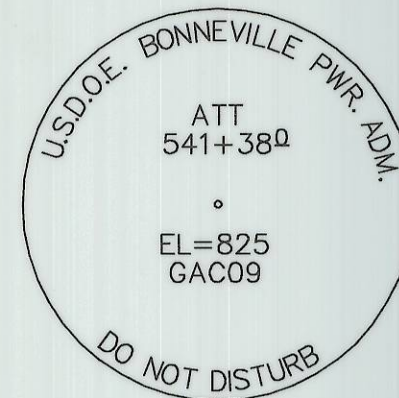
ONCE ANGLE POINTS WERE ESTABLISHED, TOWER LOCATIONS WERE MARKED (FOR MONOPOLE LOCATIONS, WITH HUB AND TACK, AND FOR STANDARD H-FRAME CONFIGURATIONS WITH 5/8-INCH IRON ROD AND STANDARD BPA ALUMINUM CAP, MARKED ACCORDINGLY), USING THE SAME REDUNDANCY PROCEDURES EMPLOYED WITH THE ESTABLISHMENT OF ANGLE POINTS.

POINTS ON TANGENT (POT) WERE MONUMENTED AT ROAD CROSSINGS AND AT VARIOUS LOCATIONS ALONG THE PROJECT CENTERLINE AS NOTED HEREON. HERE AGAIN, IF POT LOCATIONS FELL WITHIN AREAS OF CULTIVATION, A 5/8 INCH REBAR WAS DRIVEN TO DEPTH (AS NOTED), A STANDARD BPA ALUMINUM CAP AFFIXED, AND A PRELIMINARY POSITION MARKED ON THE CAP. THIS POSITION WAS THEN CHECKED AND VERIFIED USING THE SAME PROCEDURES TO OBTAIN REDUNDANCY AS EMPLOYED IN ESTABLISHING PROJECT ANGLE POINTS.

VARIOUS ROADWAY AND UTILITY CROSSINGS WERE ANALYZED USING CONVENTIONAL EDM EQUIPMENT, FROM PREVIOUSLY ESTABLISHED RTK POT'S. SOME UTILITY AND ROADWAY CROSSINGS ALONG THE PROJECT CENTERLINE ARE DELINEATED HEREON BASED UPON THE RESULTS OF THESE TERRESTRIAL SURVEY MEASUREMENTS.

LINE OF THE PUBLIC LAND SURVEY SYSTEM ARE SHOWN HEREON FOR GRAPHICAL PURPOSES ONLY AND, UNLESS DEFINED BY EXISTING MONUMENTATION AS NOTED, ARE IN NO WAY TO BE CONSTRUED AS DEPICTING ACTUAL LOCATIONS OF SECTIONALIZED BOUNDARIES.

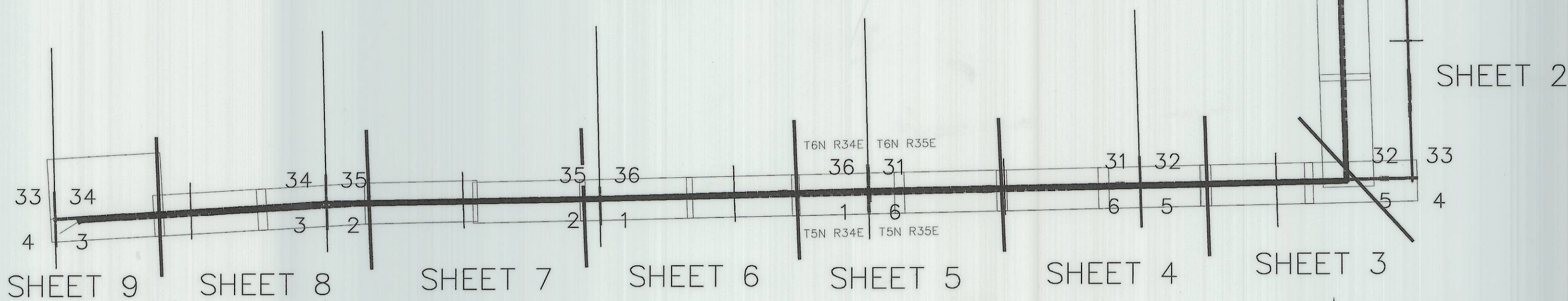
TYPICAL CAP MARKING DETAIL



(STATIONING DEPENDENT)
 NOT TO SCALE (N.T.S.)

LEGEND:

- COUNTY ROAD RIGHT-OF-WAY
- BPA RIGHT-OF-WAY
- COUNTY ROAD
- x-x- EXISTING BARBED-WIRE FENCELINE
- △ FOUND CONTROL MONUMENT, AS NOTED
- ⊕ SET BPA MONUMENT, 3-1/4" AC ON 5 / 8 INCH IRON ROD (SEE TYPICAL CAP DETAIL)
- FOUND MONUMENT, AS NOTED
- () INDICATES RECORD VALUE, AS NOTED
- AC ALUMINUM CAP
- AP ANGLE POINT
- BC BRASS CAP
- BO BEARING OBJECT
- BPA BONNEVILLE POWER ADMINISTRATION
- EQ EQUATION
- FD FOUND
- GIP GALVANIZED IRON PIPE
- POT POINT ON TANGENT
- R/W RIGHT-OF-WAY
- U.C.S.R. UMATILLA COUNTY SURVEY RECORDS
- U.C.L.C.R. UMATILLA COUNTY LAND CORNER RECORD
- YPC YELLOW PLASTIC CAP
- 33 34 + SECTION CORNER, AS NOTED
- 4 3
- 35 + 2 ONE-QUARTER SECTION CORNER, AS NOTED



NOTE:
 BPA RECORD VALUES TAKEN FROM WALLA WALLA-PENDLETON 69KV TRANSMISSION LINE SURVEY SHEETS, MILES 9 THROUGH 15, DRAWING NO.'S 9610-9615, DATED 9/27/1940.

REFERENCE SURVEYS:

- RECORD OF SURVEY NO. 03-22-B BY STEPHEN K. HADDOCK, PLS
- RECORD OF SURVEY NO. 03-23-C BY PAUL W.P. TOMKINS, PLS
- RECORD OF SURVEY NO. 03-043-C BY STEPHEN K. HADDOCK, PLS
- LAND CORNER RECORDS ASSOCIATED WITH SURVEY NO. 03-22-B
- LAND CORNER RECORDS ASSOCIATED WITH SURVEY NO. 03-23-C
- LAND CORNER RECORD NO. 93-40-B BY WAYNE O. HARRIS, PLS
- LAND CORNER RECORD NO. 00-31-B BY PAUL W.P. TOMKINS, PLS
- LAND CORNER RECORD NO. 03-314-C BY STEPHEN K. HADDOCK, PLS
- LAND CORNER RECORD NO. 02-299-R BY DAVID L. HADDOCK, PLS
- LAND CORNER RECORD NO. 91-81-B BY PAUL W.P. TOMKINS, PLS
- GLO PLATS OF TOWNSHIPS 5 & 6 NORTH RANGES 33, 34 AND 35 EAST, WM

REGISTERED PROFESSIONAL LAND SURVEYOR
Gregory A. Crites
OREGON
 JULY 18, 1980
 GREGORY A. CRITES
 1887

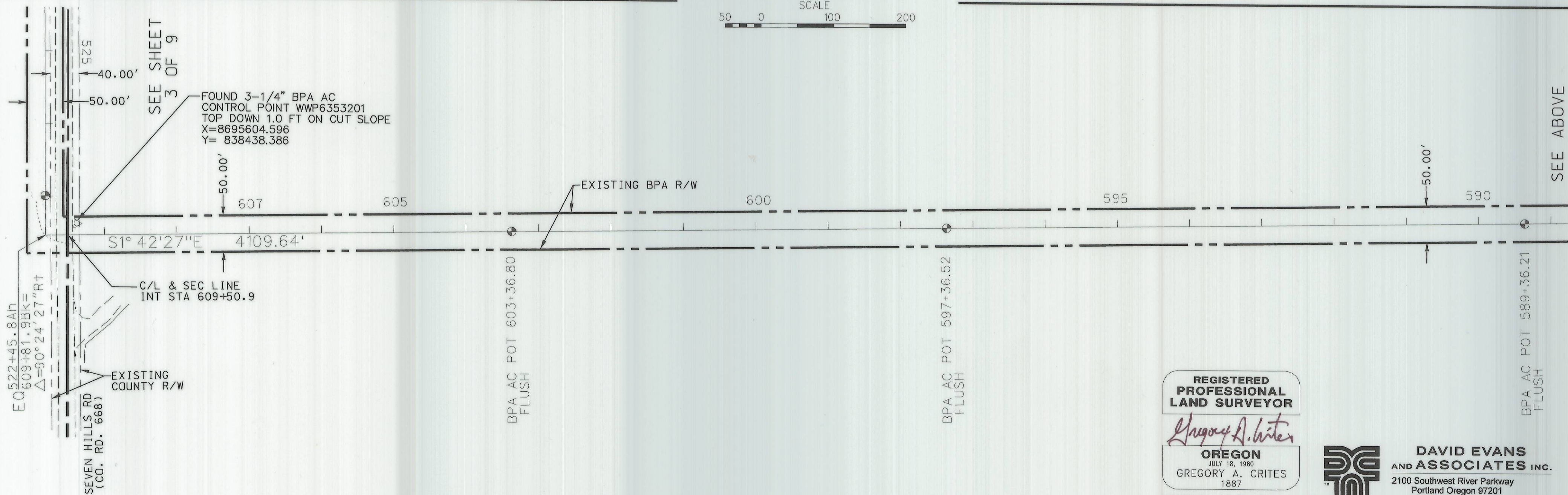
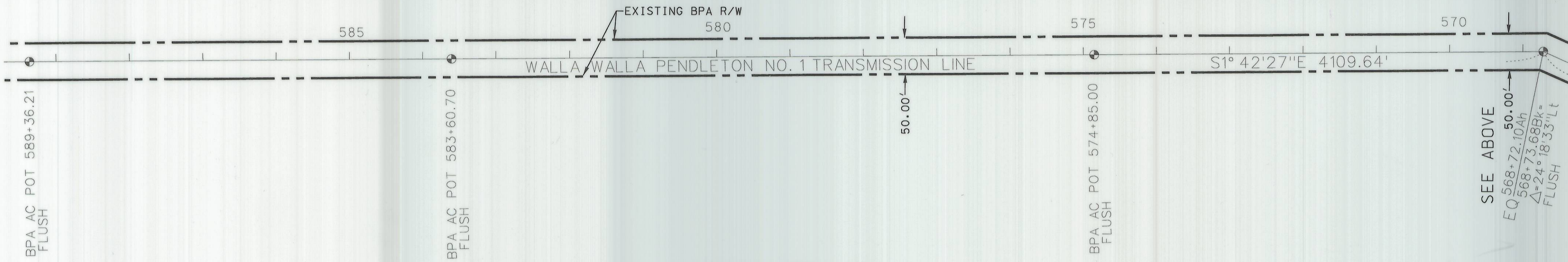
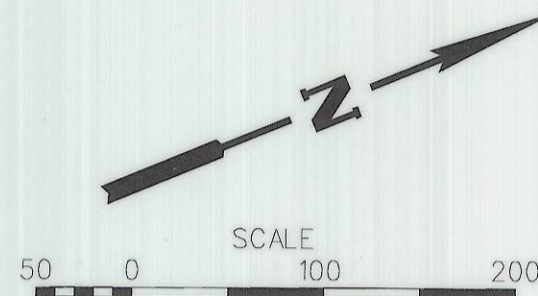
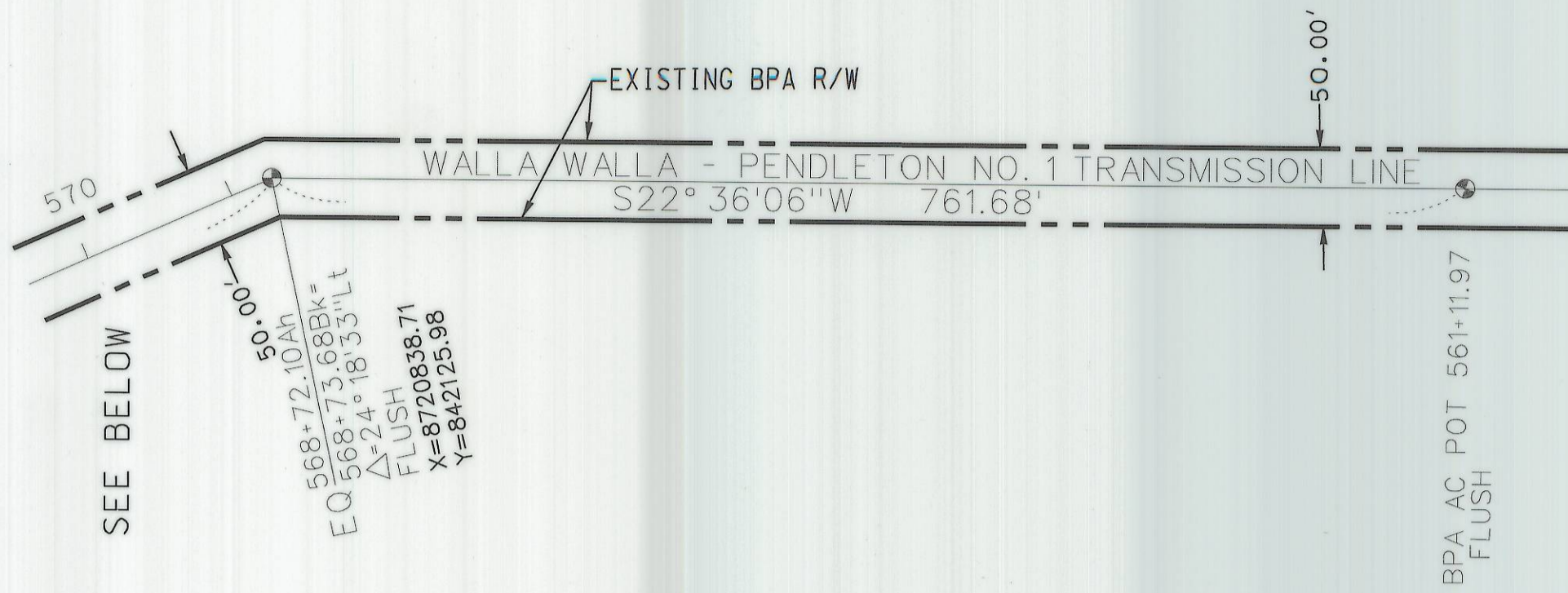
RENEWS: 12/31/09

DAVID EVANS AND ASSOCIATES INC.
 2100 Southwest River Parkway
 Portland Oregon 97201
 Phone: 503.223.6663

RECEIVED BY
 Umatilla County Surveyor
 Date 6-09
 Rec'd by HK
 No. 09-102-B

RECORD OF SURVEY

A PORTION OF THE WALLA WALLA - PENDLETON NO. 1 TRANSMISSION LINE
 FOR THE BONNEVILLE POWER ADMINISTRATION
 IN THE SOUTHEAST QUARTER OF SECTION 32, TOWNSHIP 6 NORTH, RANGE 35 EAST
 AND
 THE NORTH HALF OF SECTIONS 5 & 6, TOWNSHIP 5 NORTH, RANGE 35 EAST
 AND
 THE NORTH HALF OF SECTIONS 1, 2 & 3, TOWNSHIP 5 NORTH, RANGE 34 EAST
 ALL IN THE WILLAMETTE MERIDIAN
UMATILLA COUNTY, OREGON
 MAY 6, 2009



REGISTERED
 PROFESSIONAL
 LAND SURVEYOR

Gregory A. Crites
OREGON
 JULY 18, 1980
 GREGORY A. CRITES
 1887

RENEWS: 12/31/09



**DAVID EVANS
 AND ASSOCIATES INC.**
 2100 Southwest River Parkway
 Portland Oregon 97201
 Phone: 503.223.6663

RECEIVED BY
 Umatilla County Surveyor

Date: 6-09
 Rec'd by: [Signature]
 No. 09-102-B

RECORD OF SURVEY

A PORTION OF THE WALLA WALLA - PENDLETON NO. 1 TRANSMISSION LINE

FOR THE BONNEVILLE POWER ADMINISTRATION

IN THE SOUTHEAST QUARTER OF SECTION 32, TOWNSHIP 6 NORTH, RANGE 35 EAST

AND THE NORTH HALF OF SECTIONS 5 & 6, TOWNSHIP 5 NORTH, RANGE 35 EAST

AND THE NORTH HALF OF SECTIONS 1, 2 & 3, TOWNSHIP 5 NORTH, RANGE 34 EAST

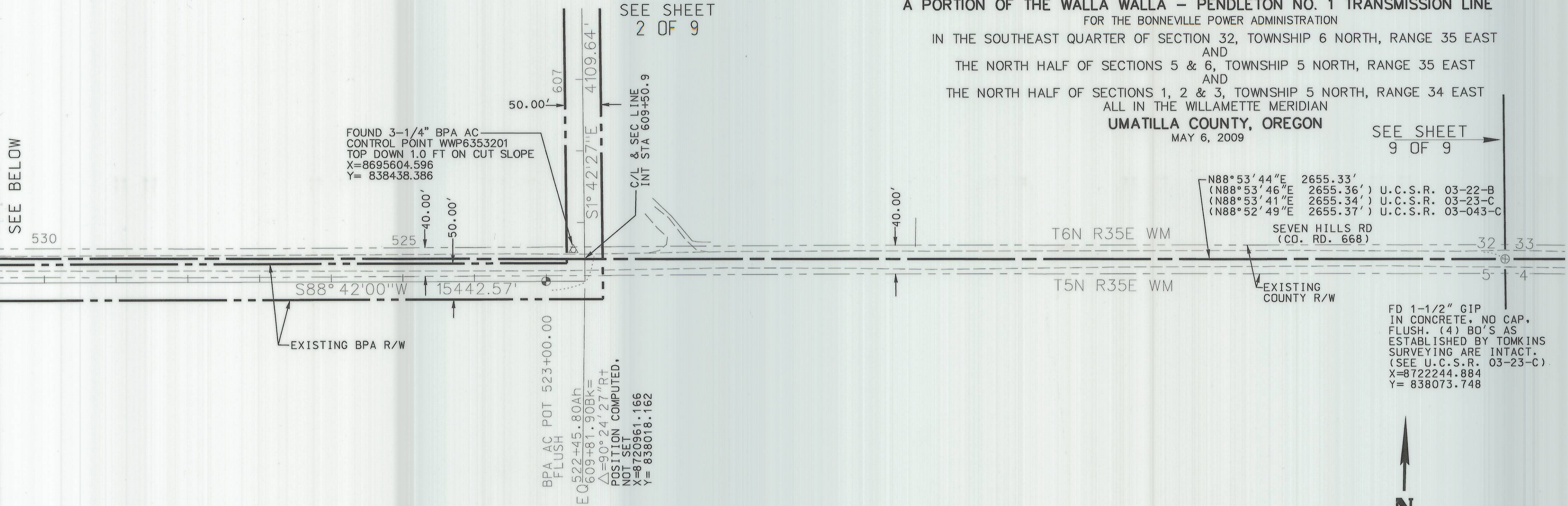
ALL IN THE WILLAMETTE MERIDIAN

UMATILLA COUNTY, OREGON

MAY 6, 2009

SEE SHEET 9 OF 9

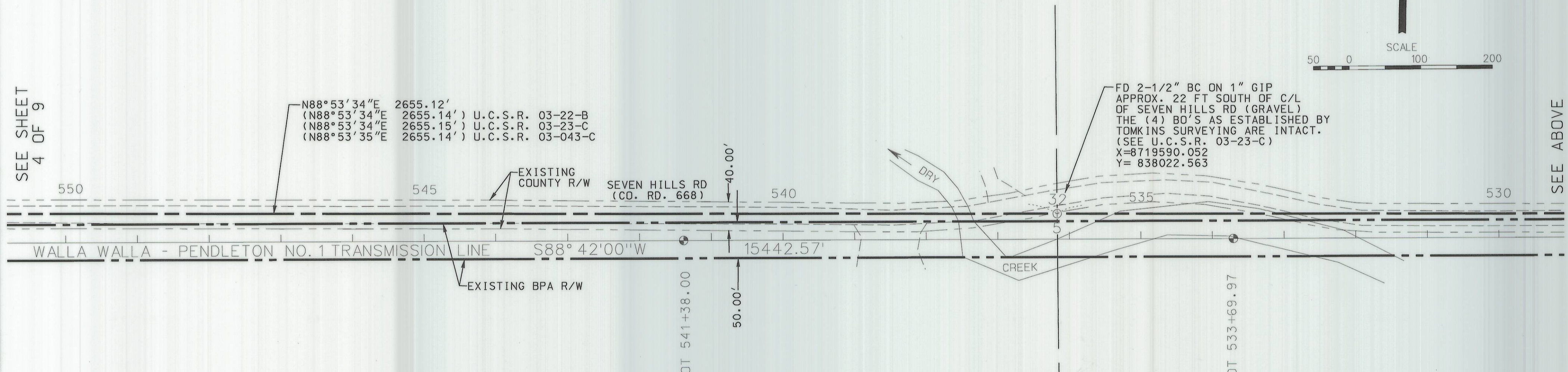
SEE BELOW



FD 1-1/2" GIP
IN CONCRETE, NO CAP,
FLUSH. (4) BO'S AS
ESTABLISHED BY TOMKINS
SURVEYING ARE INTACT.
(SEE U.C.S.R. 03-23-C)
X=8722244.884
Y= 838073.748



SEE SHEET 4 OF 9



FD 2-1/2" BC ON 1" GIP
APPROX. 22 FT SOUTH OF C/L
OF SEVEN HILLS RD (GRAVEL)
THE (4) BO'S AS ESTABLISHED BY
TOMKINS SURVEYING ARE INTACT.
(SEE U.C.S.R. 03-23-C)
X=8719590.052
Y= 838022.563

SEE ABOVE

REGISTERED
PROFESSIONAL
LAND SURVEYOR

Gregory A. Crites

OREGON
JULY 18, 1980
GREGORY A. CRITES
1887

RENEWS: 12/31/09



DAVID EVANS
AND ASSOCIATES INC.
2100 Southwest River Parkway
Portland Oregon 97201
Phone: 503.223.6663

RECEIVED BY
Umatilla County Surveyor
Date 6-09
Rec'd By KK
No. 09-102-B

RECORD OF SURVEY

A PORTION OF THE WALLA WALLA - PENDLETON NO. 1 TRANSMISSION LINE

FOR THE BONNEVILLE POWER ADMINISTRATION

IN THE SOUTHEAST QUARTER OF SECTION 32, TOWNSHIP 6 NORTH, RANGE 35 EAST

AND

THE NORTH HALF OF SECTIONS 5 & 6, TOWNSHIP 5 NORTH, RANGE 35 EAST

AND

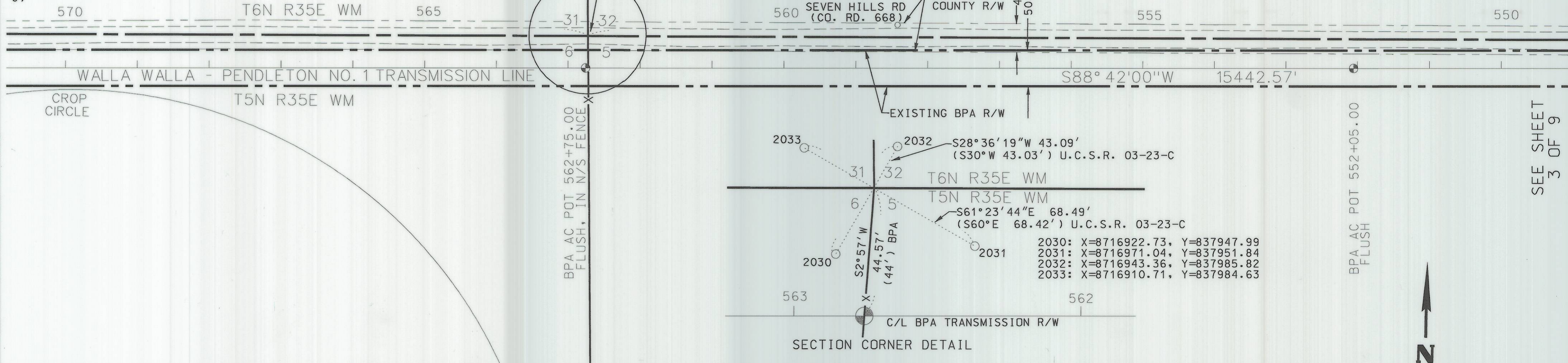
THE NORTH HALF OF SECTIONS 1, 2 & 3, TOWNSHIP 5 NORTH, RANGE 34 EAST

ALL IN THE WILLAMETTE MERIDIAN

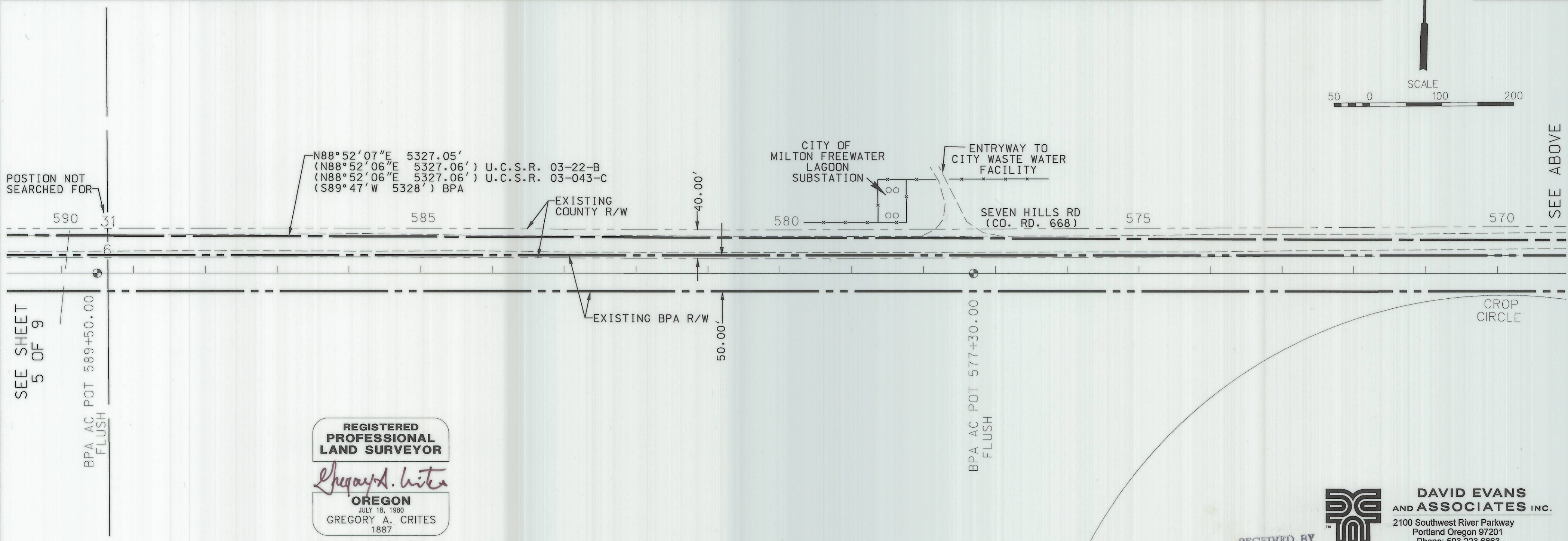
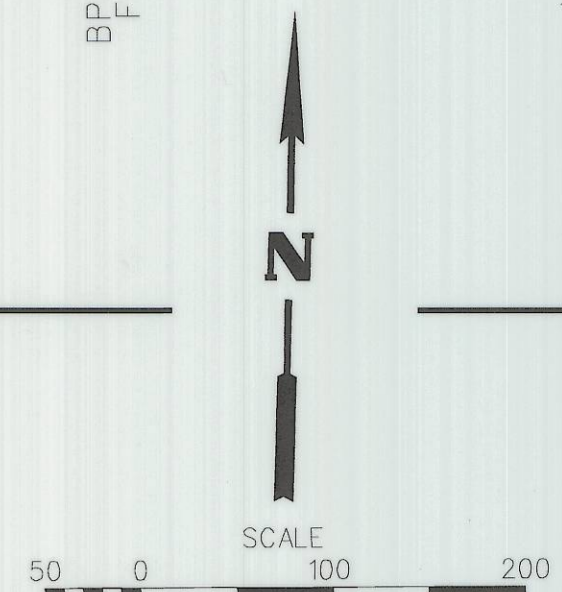
UMATILLA COUNTY, OREGON

MAY 6, 2009

SEE BELOW



SEE SHEET 3 OF 9



SEE SHEET 5 OF 9

SEE ABOVE

REGISTERED PROFESSIONAL LAND SURVEYOR
Gregory A. Crites
 OREGON
 JULY 18, 1980
 GREGORY A. CRITES
 1887

RENEWS: 12/31/09



DAVID EVANS AND ASSOCIATES INC.
 2100 Southwest River Parkway
 Portland Oregon 97201
 Phone: 503.223.6663

RECEIVED BY
 Umatilla County Surveyor
 Date: 6-09
 Rec'd by: [Signature]
 No: 09-102KB

RECORD OF SURVEY

A PORTION OF THE WALLA WALLA - PENDLETON NO. 1 TRANSMISSION LINE

FOR THE BONNEVILLE POWER ADMINISTRATION

IN THE SOUTHEAST QUARTER OF SECTION 32, TOWNSHIP 6 NORTH, RANGE 35 EAST

AND

THE NORTH HALF OF SECTIONS 5 & 6, TOWNSHIP 5 NORTH, RANGE 35 EAST

AND

THE NORTH HALF OF SECTIONS 1, 2 & 3, TOWNSHIP 5 NORTH, RANGE 34 EAST

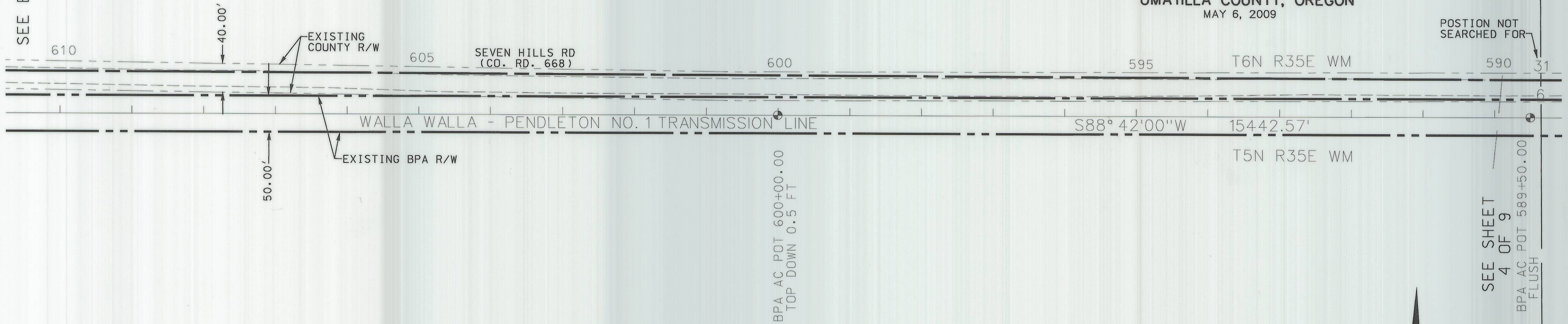
ALL IN THE WILLAMETTE MERIDIAN

UMATILLA COUNTY, OREGON

MAY 6, 2009

SEE BELOW

POSITION NOT SEARCHED FOR



SEE SHEET 4 OF 9
BPA AC POT 589+50.00 FLUSH



SEE SHEET 6 OF 9

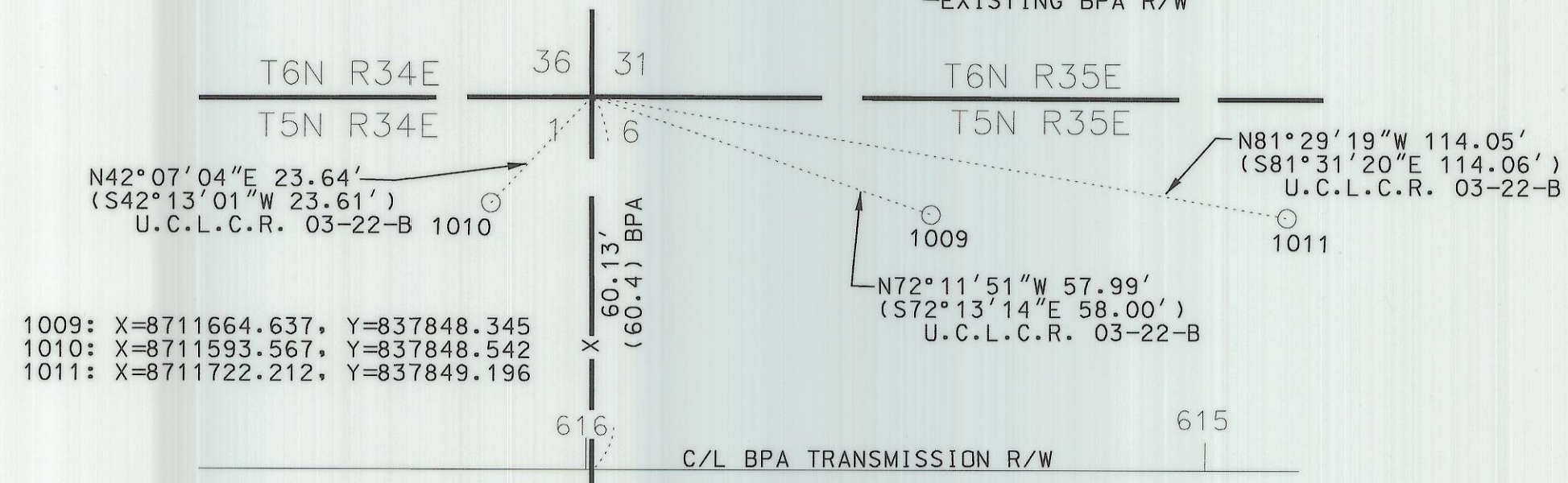
SEE ABOVE



SEE DETAIL

POSITION COMPUTED FROM (3) BD'S, YPC'S MKD "TOMKINS SURVEYING". (SEE U.C.S.R. 03-23-C) X=8711609.420 Y= 837866.076

FD 3-1/4" BPA AC CONTROL POINT WWP5350601 TOP DOWN 0.2 FT X=8711802.756 Y= 837810.781



1009: X=8711664.637, Y=837848.345
1010: X=8711593.567, Y=837848.542
1011: X=8711722.212, Y=837849.196

SECTION CORNER DETAIL

REGISTERED PROFESSIONAL LAND SURVEYOR
Gregory A. Crites
OREGON
JULY 18, 1980
GREGORY A. CRITES
1887

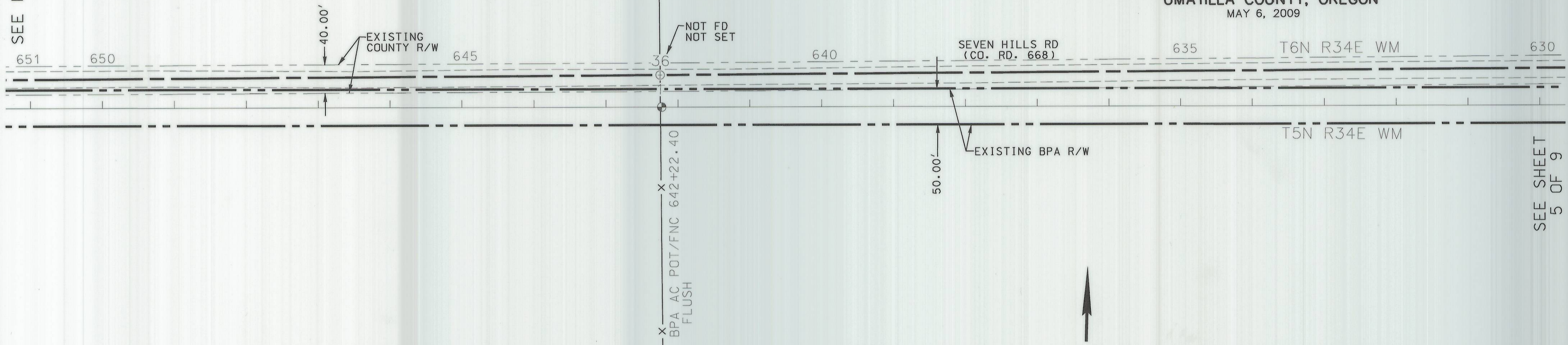
DAVID EVANS AND ASSOCIATES INC.
2100 Southwest River Parkway
Portland Oregon 97201
Phone: 503.223.6663

RENEWS: 12/31/09

Date: 6-01
Rec'd By: KE
No: 09-102-B

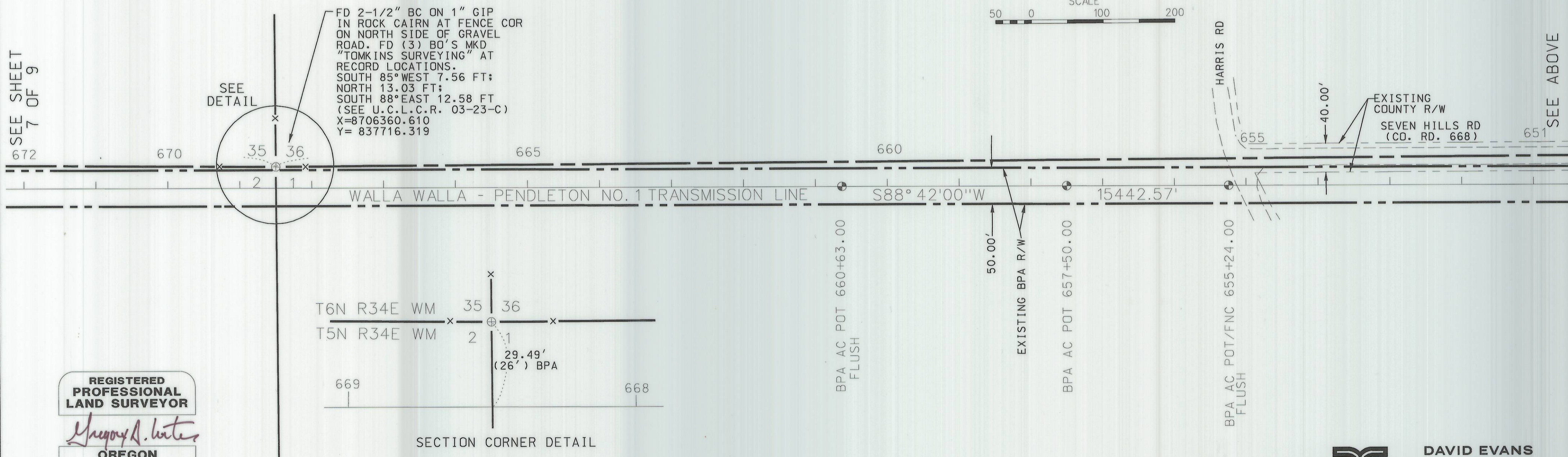
RECORD OF SURVEY
 A PORTION OF THE WALLA WALLA - PENDLETON NO. 1 TRANSMISSION LINE
 FOR THE BONNEVILLE POWER ADMINISTRATION
 IN THE SOUTHEAST QUARTER OF SECTION 32, TOWNSHIP 6 NORTH, RANGE 35 EAST
 AND
 THE NORTH HALF OF SECTIONS 5 & 6, TOWNSHIP 5 NORTH, RANGE 35 EAST
 AND
 THE NORTH HALF OF SECTIONS 1, 2 & 3, TOWNSHIP 5 NORTH, RANGE 34 EAST
 ALL IN THE WILLAMETTE MERIDIAN
UMATILLA COUNTY, OREGON
 MAY 6, 2009

SEE BELOW



SEE SHEET
5 OF 9

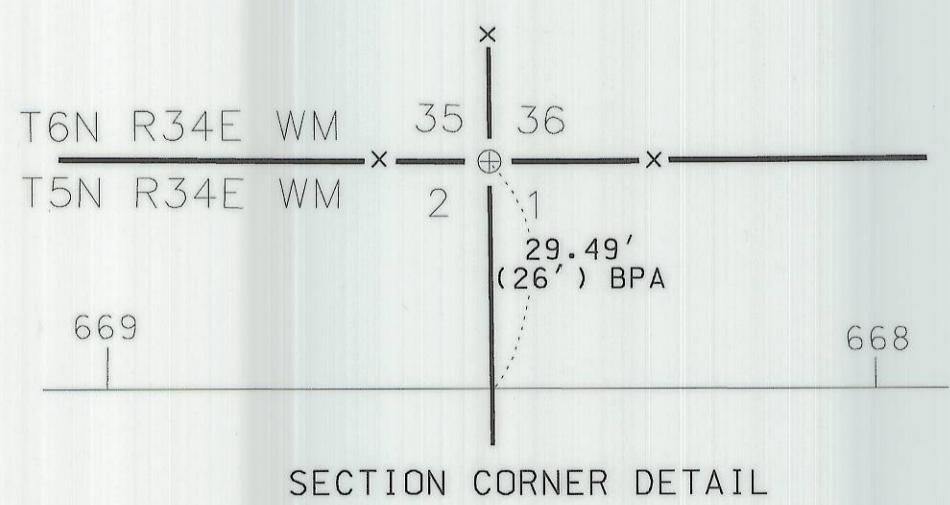
SEE SHEET
7 OF 9



SEE ABOVE

SEE
DETAIL

FD 2-1/2" BC ON 1" GIP
 IN ROCK CAIRN AT FENCE COR
 ON NORTH SIDE OF GRAVEL
 ROAD. FD (3) BO'S MKD
 "TOMKINS SURVEYING" AT
 RECORD LOCATIONS.
 SOUTH 85° WEST 7.56 FT;
 NORTH 13.03 FT;
 SOUTH 88° EAST 12.58 FT
 (SEE U.C.L.C.R. 03-23-C)
 X=8706360.610
 Y= 837716.319



**REGISTERED
 PROFESSIONAL
 LAND SURVEYOR**

Gregory A. Crites

OREGON
 JULY 18, 1980
 GREGORY A. CRITES
 1887

RENEWS: 12/31/09

**DAVID EVANS
 AND ASSOCIATES INC.**
 2100 Southwest River Parkway
 Portland Oregon 97201
 Phone: 503.223.6663

RECEIVED BY
 Umatilla County Surveyor

Date: 6-09
 Rec'd by: RK
 No. 09-102-B

SHEET 6 OF 9

RECORD OF SURVEY

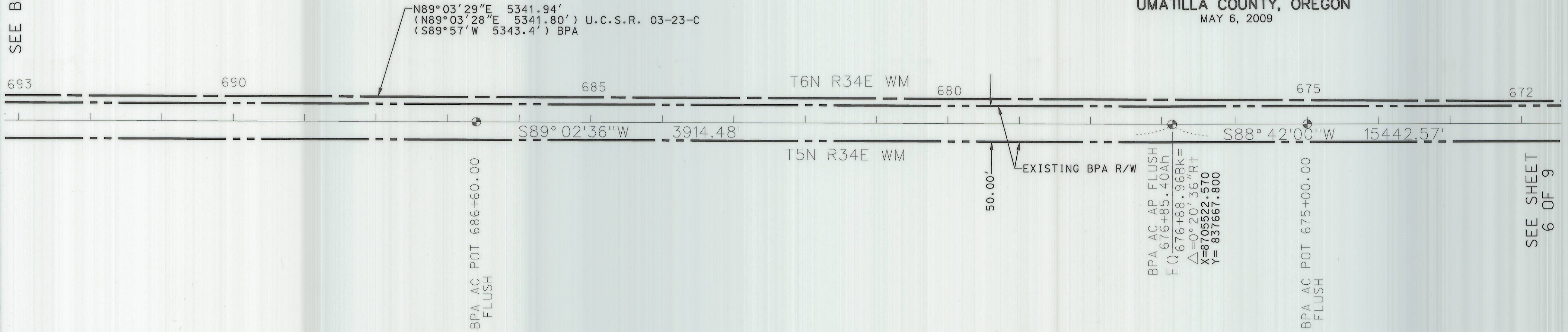
A PORTION OF THE WALLA WALLA - PENDLETON NO. 1 TRANSMISSION LINE
FOR THE BONNEVILLE POWER ADMINISTRATION

IN THE SOUTHEAST QUARTER OF SECTION 32, TOWNSHIP 6 NORTH, RANGE 35 EAST
AND
THE NORTH HALF OF SECTIONS 5 & 6, TOWNSHIP 5 NORTH, RANGE 35 EAST
AND
THE NORTH HALF OF SECTIONS 1, 2 & 3, TOWNSHIP 5 NORTH, RANGE 34 EAST
ALL IN THE WILLAMETTE MERIDIAN

UMATILLA COUNTY, OREGON

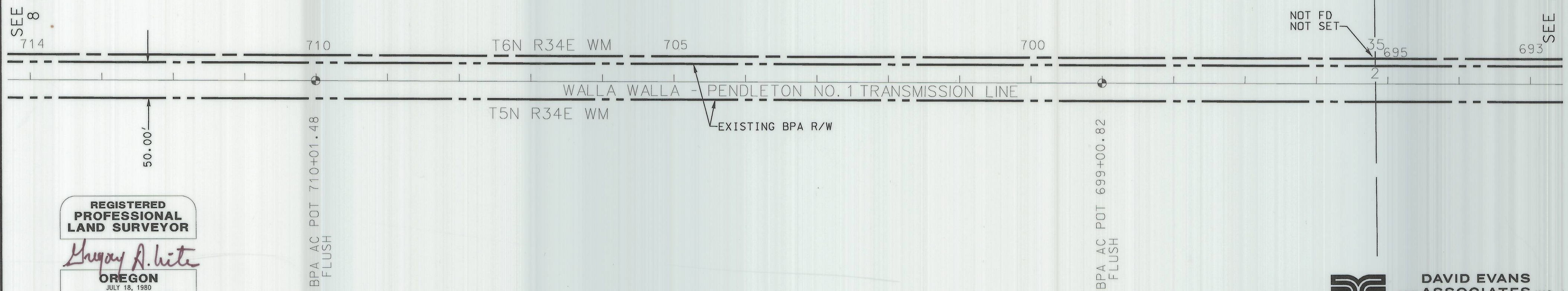
MAY 6, 2009

SEE BELOW

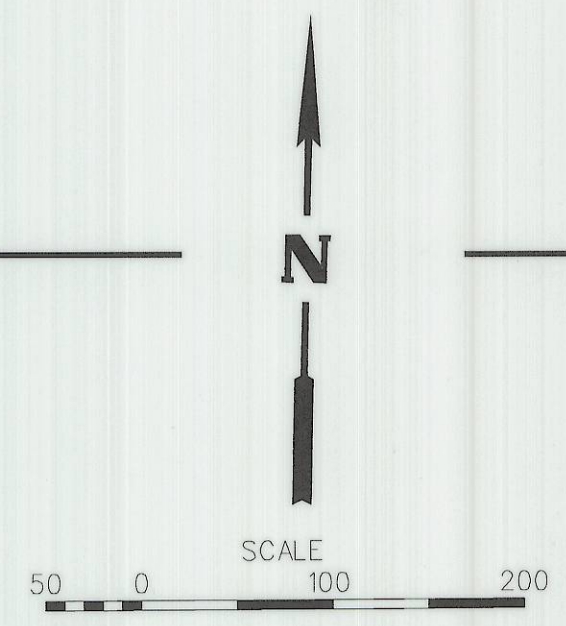


SEE SHEET
6 OF 9

SEE SHEET
8 OF 9



SEE ABOVE



REGISTERED
PROFESSIONAL
LAND SURVEYOR
Gregory A. Crites
OREGON
JULY 18, 1980
GREGORY A. CRITES
1887

RENEWS: 12/31/09

**DAVID EVANS
AND ASSOCIATES INC.**
2100 Southwest River Parkway
Portland Oregon 97201
Phone: 503.223.6663

Date: 6-09
Drawn by: [Signature]
No. CP-102-B

RECORD OF SURVEY

A PORTION OF THE WALLA WALLA - PENDLETON NO. 1 TRANSMISSION LINE

FOR THE BONNEVILLE POWER ADMINISTRATION

IN THE SOUTHEAST QUARTER OF SECTION 32, TOWNSHIP 6 NORTH, RANGE 35 EAST AND
 THE NORTH HALF OF SECTIONS 5 & 6, TOWNSHIP 5 NORTH, RANGE 35 EAST AND
 THE NORTH HALF OF SECTIONS 1, 2 & 3, TOWNSHIP 5 NORTH, RANGE 34 EAST
 ALL IN THE WILLAMETTE MERIDIAN

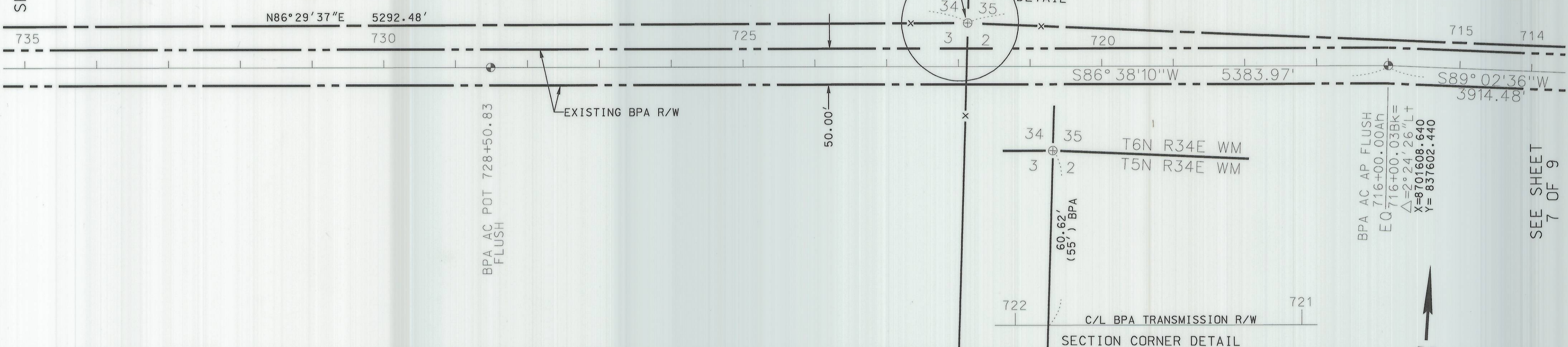
UMATILLA COUNTY, OREGON

MAY 6, 2009

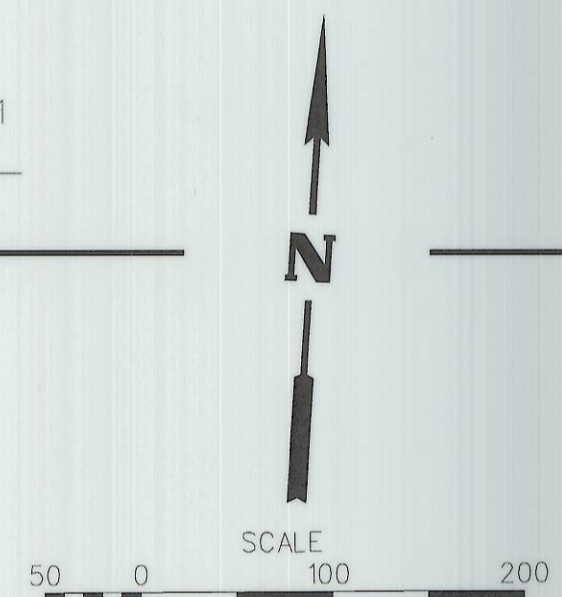
FD 2-1/2" BC ON 1" GIP
 FLUSH W/GROUND AT
 INTERSECTION OF N-S & E-W
 FENCE. FD (4) BO'S MKD
 "TOMKINS SURVEYING" AT
 RECORD LOCATIONS.
 NORTH 10.0 FT; SOUTH 10.0 FT;
 EAST 10.0 FT; WEST 10.0 FT
 (SEE U.C.S.R. 03-23-C)
 X=8701019.388
 Y= 837628.502

SEE
 DETAIL

SEE BELOW

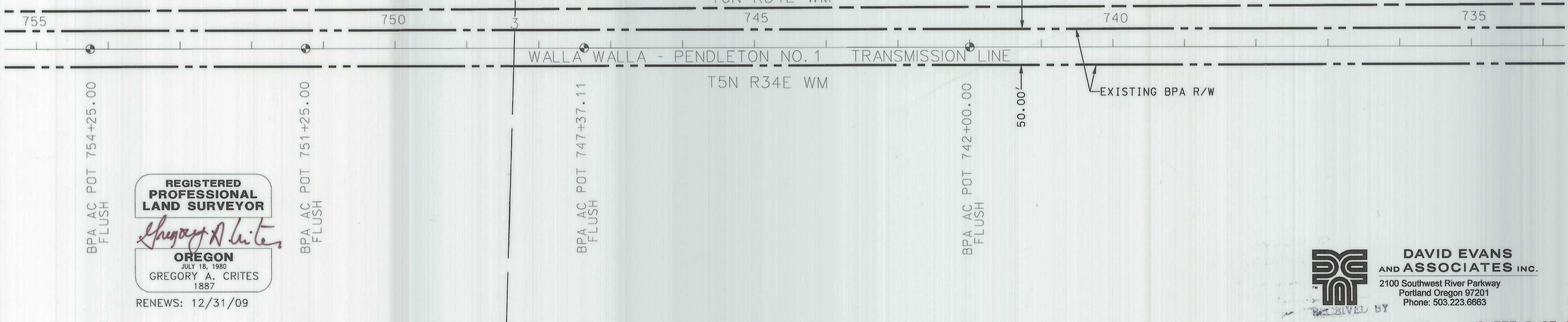


SEE SHEET
 7 OF 9



SEE SHEET
 9 OF 9

SEE ABOVE



BPA AC POT 754+25.00
 FLUSH

BPA AC POT 751+25.00
 FLUSH

BPA AC POT 747+37.11
 FLUSH

BPA AC POT 742+00.00
 FLUSH

REGISTERED
 PROFESSIONAL
 LAND SURVEYOR
Gregory A. Crites
 OREGON
 JULY 18, 1980
 GREGORY A. CRITES
 1887

RENEWS: 12/31/09



DAVID EVANS
 AND ASSOCIATES INC.
 2100 Southwest River Parkway
 Portland Oregon 97201
 Phone: 503.223.6663

RECEIVED BY
 Umatilla County Surveyor
 Date 6-9-09
 Rec'd by RL
 No. 09-102-B

FD 3-1/4" BPA AC
CONTROL POINT WWP5343301
FLUSH
X=8695604.596
Y= 838438.386

RECORD OF SURVEY

A PORTION OF THE WALLA WALLA - PENDLETON NO. 1 TRANSMISSION LINE
FOR THE BONNEVILLE POWER ADMINISTRATION
IN THE SOUTHEAST QUARTER OF SECTION 32, TOWNSHIP 6 NORTH, RANGE 35 EAST
AND
THE NORTH HALF OF SECTIONS 5 & 6, TOWNSHIP 5 NORTH, RANGE 35 EAST
AND
THE NORTH HALF OF SECTIONS 1, 2 & 3, TOWNSHIP 5 NORTH, RANGE 34 EAST
ALL IN THE WILLAMETTE MERIDIAN
UMATILLA COUNTY, OREGON
MAY 6, 2009

2040: X=8722153.836, Y=840754.126
2041: X=8722201.274, Y=840727.615
2042: X=8722144.157, Y=840716.020

FD 5/8" REBAR W/YPC MKD.
"TOMKINS SURVEYING"
SET FLUSH (TYPICAL)

FD 1-1/2" GIP
IN CONCRETE, NO CAP,
FLUSH. (4) BO'S AS
ESTABLISHED BY TOMKINS
SURVEYING ARE INTACT.
(SEE U.C.S.R. 03-23-C)
X=8722244.884
Y= 838073.748

FD 2" BC ON 1" GIP AT
INTERSECTION OF N-S
FENCELINE W/FENCELINE
BEARING EASTERLY.
FD (4) BO'S, YPC'S MKD
"TOMKINS SURVEYING"
AT RECORD LOCATIONS:
NORTH 35.5 FT; EAST 14.5 FT
SOUTH 15.7 FT; WEST 10.0 FT
(SEE U.C.S.R. 00-31-B)
X=8695736.820
Y= 837304.806

FD 3-1/4" BPA AC
CONTROL POINT WWP5340301
FLUSH
X=8696234.885
Y= 837313.455

EQ 0+00.40Ah
769+84.17Bk=
Δ=28°06'00" Lt
X=8696233.951
Y= 837286.537

BPA AC POT 766+75.00
FLUSH

BPA AC POT 754+25.00
FLUSH

**REGISTERED
PROFESSIONAL
LAND SURVEYOR**

Gregory A. Crites
OREGON
JULY 18, 1980
GREGORY A. CRITES
1887

RENEWS: 12/31/09



**DAVID EVANS
AND ASSOCIATES INC.**
2100 Southwest River Parkway
Portland Oregon 97201
Phone: 503.223.6663

RECEIVED BY
Umatilla County Surveyor

Date: 6-09
Rec'd by: JK
No. 09-102-B

