

SEC. 14 & 23, T. 3 N., R. 33 E., W. M.

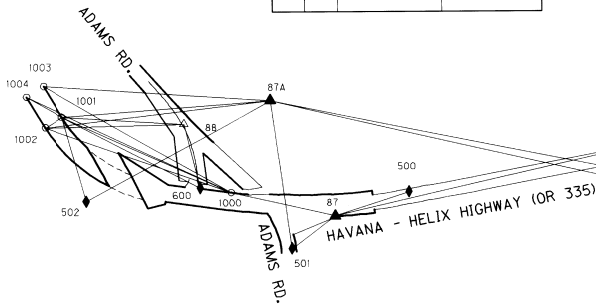
NETWORK DISTANCE AND BEARING TABLE

AT	TO	DISTANCE (FT)	BEARING
81	80	1,092.53	N 89°31'51" W
81	82	1,552.82	N 89°33'50" E
81	83	2,259.85	S 42°47'05" E
82	84	4,190.35	S 00°23'38" E
82	83A	2,984.09	S 00°12'35" W
82	83	1,670.44	S 00°36'37" W
83	84	2,520.34	S 01°03'34" E
83	83A	1,313.74	S 00°17'58" E
83A	84	1,206.84	S 01°53'13" E
84	85	601.52	S 32°20'46" W
84	84A	454.24	S 04°47'58" W
84	86	841.42	S 20°29'26" W
84A	83A	1,658.84	N 00°03'35" W
84A	87A	1,916.77	S 13°04'22" W
84A	85	422.40	S 37°24'00" W
84A	85	289.21	S 78°55'45" E
85	86	281.33	S 05°34'02" E
86	87	1,303.00	S 12°57'25" E
87	1000	430.04	S 12°46'43" W
87	501	217.06	S 36°22'53" E
87	500	312.93	N 18°02'08" W
87A	84	2,367.19	N 11°29'26" E
87A	1001	834.92	S 04°13'34" E
87A	1003	919.12	S 03°43'40" W
501	87A	604.21	S 81°43'20" E
502	87A	848.80	S 28°40'52" E
502	1001	358.54	S 74°18'29" W
600	88	269.26	N 76°22'47" W
600	1000	128.03	N 08°45'24" E
600	1001	629.76	S 27°45'24" W
1000	1001	751.71	S 24°30'39" W
1001	88	494.90	N 03°39'39" E
1001	1002	79.92	S 31°47'30" E
1001	1003	143.46	S 58°13'15" W
1001	1004	164.22	S 29°05'44" W
1002	87A	915.92	N 06°32'29" E
1002	88	561.92	N 01°04'17" W
1002	1000	798.83	N 19°44'09" E
1002	1004	143.48	S 58°13'05" W
1003	1000	874.68	N 29°44'00" E
1004	1000	915.50	N 25°19'56" E

LEGEND	
○	FOUND R/W MONUMENT USED AS NETWORK POINT
△	FOUND L MONUMENT USED AS NETWORK POINT
▲	SET NETWORK POINT
◆	SET STRATEGIC POINT
◇	OBSERVATIONS
—	BASIS OF BEARING

BASIS OF BEARING AND CONTROL NETWORK SCHEMATIC

NOT TO SCALE



SURVEY NARRATIVE

THE PURPOSE OF THIS SURVEY IS TO ESTABLISH HORIZONTAL CONTROL AND DEFINE THE RIGHT-OF-WAY BOUNDARY ACQUIRED FOR THE CONSTRUCTION OF THE INTERSECTION OF THE HAVANA - HELIX HIGHWAY (OR 335) AT ADAMS ROAD LOCATED AT M.P. 8.87.

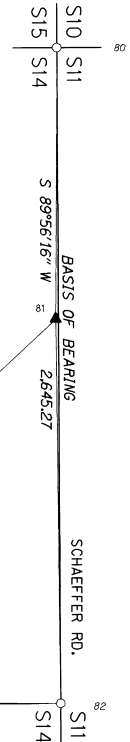
RIGHT-OF-WAY ACQUIRED NECESSARY FOR THIS PROJECT WAS DETERMINED FROM THE OREGON DEPARTMENT OF TRANSPORTATION RIGHT-OF-WAY MAP 78-33-14.

BASIS OF BEARING FOR THIS SURVEY IS THE SECTION LINE BETWEEN NETWORK POINTS 80 AND 82 FROM COUNTY SURVEY 88-17-B WITH A BEARING OF S 89°56'16" W AND A DISTANCE OF 2645.27 FEET. COORDINATES ARE ASSUMED FOR THIS PROJECT. THIS SURVEY IS LOCATED IN NW ¼ OF SEC. 23, T.3N, R.33E, W.M.

HORIZONTAL CONTROL FOR THIS PROJECT WAS ESTABLISHED AND OBSERVATIONS WERE ADJUSTED BY USING LEAST SQUARES. THE LOCATION WORK WAS DONE FROM SEPTEMBER 9, 2005 TO NOVEMBER 7, 2005.

THE RIGHT-OF-WAY BOUNDARY MONUMENTATION WAS DETERMINED BY STATION OFFSET FROM CENTERLINE CHANGES IN RIGHT-OF-WAY AND REFERENCES WERE MONUMENTED USING ½" X 30" IRON REBAR WITH A POST AND PLACED WITH HIGHWAY STATIONING AND OFFSET FROM CENTERLINE. THE RIGHT-OF-WAY MONUMENTATION WAS COMPLETED ON OCTOBER 30, 2008.

THE DATA WAS OBTAINED WITH A LEICA TCA 1800 ELECTRONIC TOTAL STATION.



NETWORK POINT COORDINATE TABLE

PT. NO.	LOP	NORTHING	EASTING	DATE	DESCRIPTION AND REFERENCE DOCUMENTS
80		60,000.000	10,000.000	09-15-05	FND 2 1/2" BRASS CAP ON 1 1/2" X 30" G.I.P., FOR SECTIONS 10, 11, 14, & 15, PER COUNTY SURVEY NO. 88-17-B.
81		59,991.052	11,092.491	09-15-05	SET HUB AND TACK
82		60,002.873	12,645.268	09-15-05	FND 2 1/2" BRASS CAP ON 1 1/2" X 30" G.I.P., FOR THE N 1/4 CORNER OF SECTION 14, PER COUNTY SURVEY NO. 88-17-B
83		58,332.525	12,627.478	09-15-05	SET HUB AND TACK
83A		57,018.806	12,634.341	09-15-05	SET HUB AND TACK
84		55,812.619	12,674.078	09-15-05	SET HUB AND TACK
84A		55,359.969	12,636.072	09-15-05	SET HUB AND TACK
85		55,304.434	12,352.243	09-15-05	SET HUB AND TACK
86		55,024.433	12,319.535	09-15-05	SET HUB AND TACK
87		53,754.612	12,671.694	09-15-05	SET 12" GALVANIZED NAIL
87A		53,492.874	12,202.524	09-15-05	SET HUB AND TACK
88		53,145.140	12,296.315	09-15-05	FND 5/8" IRON PIN 409.4 FT. WEST FROM OR 335 ON ADAMS ROAD, PER COUNTY SURVEY NO. 88-17-B
500		54,052.164	12,574.810	09-15-05	SET HUB AND TACK
501		53,579.864	12,800.442	09-15-05	SET HUB AND TACK
502		52,748.219	12,609.890	09-15-05	SET HUB AND TACK
600		53,208.548	12,558.007	07-02-08	SET PK NAIL
1000		53,335.219	12,576.574	09-15-05	FND BOLT WITH A 1" HEAD ON RIGHT-OF-WAY LINE, PER COUNTY SURVEY NO. 88-17-B.
1001		52,651.248	12,264.716	09-15-05	FND BOLT WITH A 1" HEAD ON RIGHT-OF-WAY LINE, PER COUNTY SURVEY NO. 88-17-B.
1002		52,583.315	12,306.823	09-15-05	FND BOLT WITH A 1" HEAD ON RIGHT-OF-WAY LINE.
1003		52,575.698	12,142.766	09-15-05	FND BOLT WITH A 1" HEAD ON RIGHT-OF-WAY LINE, PER COUNTY SURVEY NO. 88-17-B.
1004		52,507.748	12,184.860	09-15-05	FND BOLT WITH A 1" HEAD ON RIGHT-OF-WAY LINE.

REGISTERED PROFESSIONAL LAND SURVEYOR

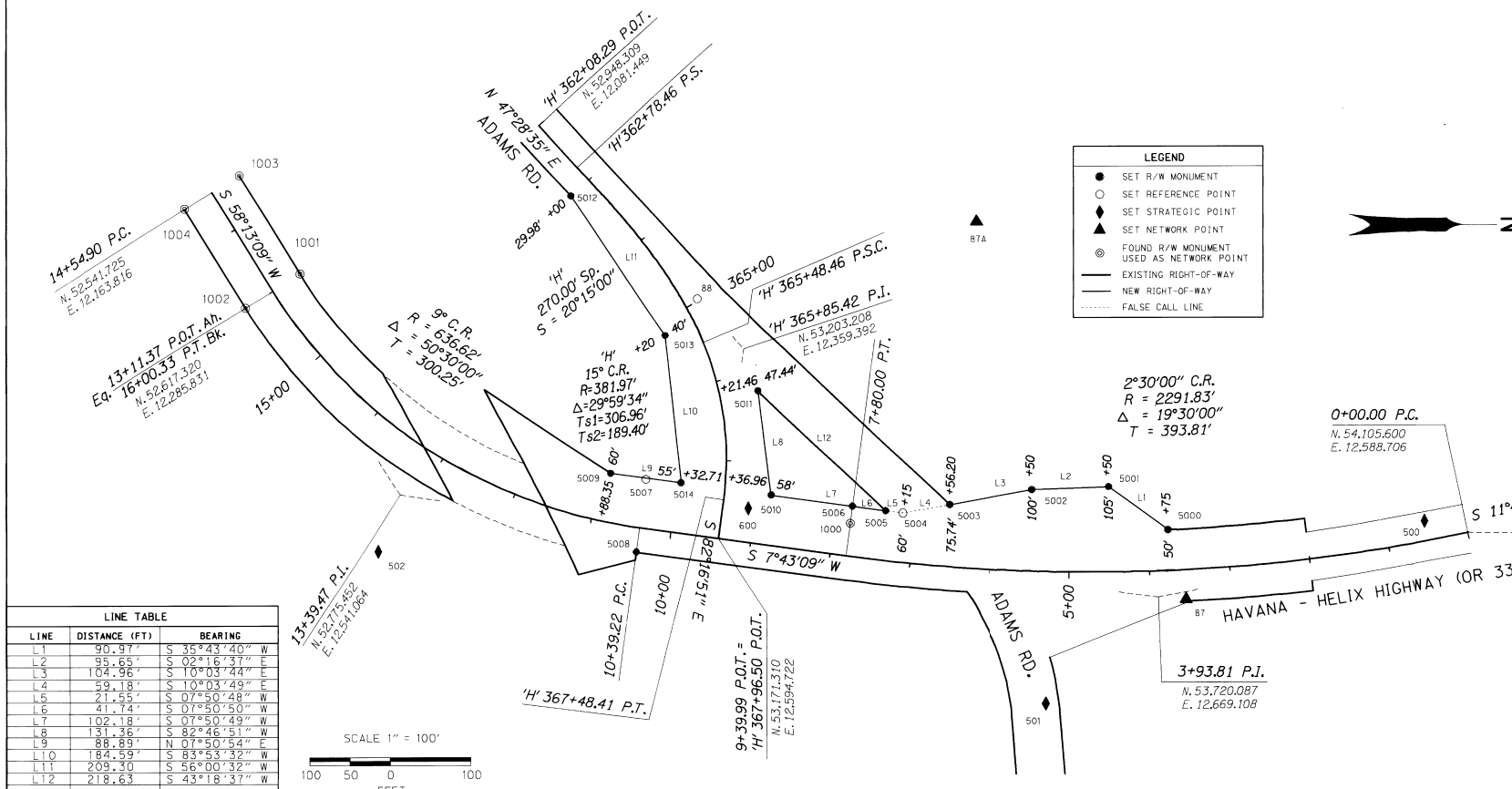
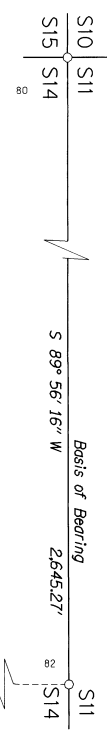
 OREGON
 July 10, 1996
 Curtis B. Stockhoff
 2765
 EXPIRES: 6/30/10

OREGON DEPARTMENT OF TRANSPORTATION

 HORIZONTAL CONTROL AND RIGHT-OF-WAY BOUNDARY MONUMENTATION OR335 @ ADAMS INTERSECTION (OR335 M.P. 8.75 TO M.P. 8.90) HAVANA - HELIX HIGHWAY UMATILLA COUNTY
 NOVEMBER 14, 2008
 SHEET 1 OF 2
 ODOT REGION 5 3012 ISLAND AVE. LA GRANDE, OR. 97850-9497 KEY NO. 13629

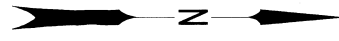
SEC. 14 & 23, T. 3 N., R. 33 E., W. M.

80
Fnd. 2 1/2" Brass Cap on 1 1/2" x 30"
galvanized iron pipe for corner common
to Sections 10.11.15. & 14
N. 60,000.000
E. 10,000.000



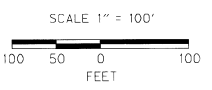
LEGEND

- SET R/W MONUMENT
- SET REFERENCE POINT
- ▲ SET STRATEGIC POINT
- ◆ SET NETWORK POINT
- ⊙ FOUND R/W MONUMENT USED AS NETWORK POINT
- EXISTING RIGHT-OF-WAY
- - - NEW RIGHT-OF-WAY
- ⋯ FALSE CALL LINE



LINE TABLE

LINE	DISTANCE (FT)	BEARING
L1	90.97'	S 35°43'40" W
L2	95.65'	S 02°16'37" E
L3	104.96'	S 10°03'44" E
L4	59.18'	S 10°03'49" E
L5	21.95'	S 07°50'48" W
L6	41.74'	S 07°50'50" W
L7	102.18'	S 07°50'49" W
L8	131.36'	S 82°46'51" W
L9	88.89'	N 07°50'54" E
L10	184.59'	S 83°53'42" W
L11	209.30'	S 56°00'32" W
L12	218.63'	S 43°18'37" W



SET MONUMENT LIST

PT. NO.	LDP NORTHING	LDP EASTING	STATION	OFFSET (FT)	DESCRIPTION & REFERENCE DOCUMENTS
88	53,145.140	12,296.315	'H' 364+96.93	17.08' Lt.	RESET NETWORK POINT 3/8"x30" REBAR WITH 1/2" DIA. ALUMINIUM CAP MARKED "OREGON STATE HWY. DEPT." (ORANGE CARSONITE)
1000	53,335.219	12,576.574	7+80 PT	40.00' Rt.	RESET NETWORK POINT 3/8"x30" REBAR WITH 1/2" DIA. ALUMINIUM CAP MARKED "OREGON STATE HWY. DEPT." (SHRP)
5000	53,731.788	12,585.004	3+75	50.00' Rt.	SET POINT 3/8"x30" REBAR WITH 1/2" DIA. ALUMINIUM CAP MARKED "OREGON STATE HWY. DEPT."
5001	53,657.942	12,531.886	4+50	105.00' Rt.	SET POINT 3/8"x30" REBAR WITH 1/2" DIA. ALUMINIUM CAP MARKED "OREGON STATE HWY. DEPT."
5002	53,562.367	12,535.686	5+50	100.00' Rt.	SET POINT 3/8"x30" REBAR WITH 1/2" DIA. ALUMINIUM CAP MARKED "OREGON STATE HWY. DEPT."
5003	53,459.018	12,554.025	6+56.20	75.74' Rt.	SET POINT 3/8"x30" REBAR WITH 1/2" DIA. ALUMINIUM CAP MARKED "OREGON STATE HWY. DEPT."
5004	53,400.744	12,564.367	7+15	60.00' Rt.	SET FALSE CALL POINT 3/8"x30" REBAR WITH 1/2" DIA. ALUMINIUM CAP MARKED "OREGON STATE HWY. DEPT." (SHRP)
5005	53,379.396	12,561.425	7+37.12	60.56' Rt.	SET POINT 3/8"x30" REBAR WITH 1/2" DIA. ALUMINIUM CAP MARKED "OREGON STATE HWY. DEPT."
5006	53,338.046	12,555.726	7+80 PT	61.04' Rt.	SET POINT 3/8"x30" REBAR WITH 1/2" DIA. ALUMINIUM CAP MARKED "OREGON STATE HWY. DEPT."
5007	53,081.040	12,521.938	10+39.22 PC	60.00' Rt.	SET POINT 3/8"x30" REBAR WITH 1/2" DIA. ALUMINIUM CAP MARKED "OREGON STATE HWY. DEPT."
5008	53,068.951	12,611.122	10+39.22 PC	30.00' Lt.	SET POINT 3/8"x30" REBAR WITH 1/2" DIA. ALUMINIUM CAP MARKED "OREGON STATE HWY. DEPT."
5009	53,037.212	12,514.264	10+88.35	60.00' Rt.	SET POINT 3/8"x30" REBAR WITH 1/2" DIA. ALUMINIUM CAP MARKED "OREGON STATE HWY. DEPT." (SHRP)
5010	53,236.819	12,541.775	'H' 367+36.96	58.00' Lt.	SET POINT 3/8"x30" REBAR WITH 1/2" DIA. ALUMINIUM CAP MARKED "OREGON STATE HWY. DEPT."
5011	53,220.312	12,411.458	'H' 366+21.46	47.44' Lt.	SET POINT 3/8"x30" REBAR WITH 1/2" DIA. ALUMINIUM CAP MARKED "OREGON STATE HWY. DEPT."
5012	52,988.139	12,169.265	'H' 363+00	29.98' Rt.	SET POINT 3/8"x30" REBAR WITH 1/2" DIA. ALUMINIUM CAP MARKED "OREGON STATE HWY. DEPT."
5013	53,105.149	12,342.798	'H' 365+20	40.00' Rt.	SET POINT 3/8"x30" REBAR WITH 1/2" DIA. ALUMINIUM CAP MARKED "OREGON STATE HWY. DEPT."
5014	53,124.798	12,526.336	'H' 367+32.71	55.00' Rt.	SET POINT 3/8"x30" REBAR WITH 1/2" DIA. ALUMINIUM CAP MARKED "OREGON STATE HWY. DEPT."

REGISTERED PROFESSIONAL LAND SURVEYOR

Curtis B. Stockhoff
OREGON
July 10, 1996
Curtis B. Stockhoff
2765

EXPIRES: 6/30/10

OREGON DEPARTMENT OF TRANSPORTATION
HORIZONTAL CONTROL AND RIGHT-OF-WAY BOUNDARY MONUMENTATION
 OR335 @ ADAMS INTERSECTION
 (OR335 M.P. 8.75 TO M.P. 8.90)
 HAVANA - HELIX HIGHWAY
 UMATILLA COUNTY
 ODOT REGION 5 3012 ISLAND AVE. UMATILLA, OR 97850-9497
 SHEET 2 OF 2
 KEY NO. 13629