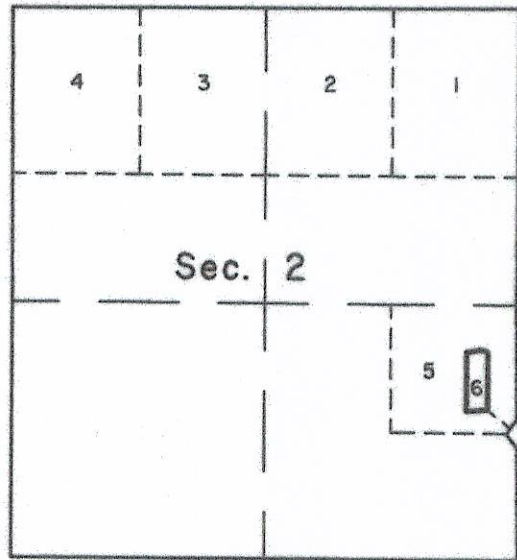


# TOWNSHIP 1 SOUTH, RANGE 33 EAST, OF THE WILLAMETTE MERIDIAN, OREGON

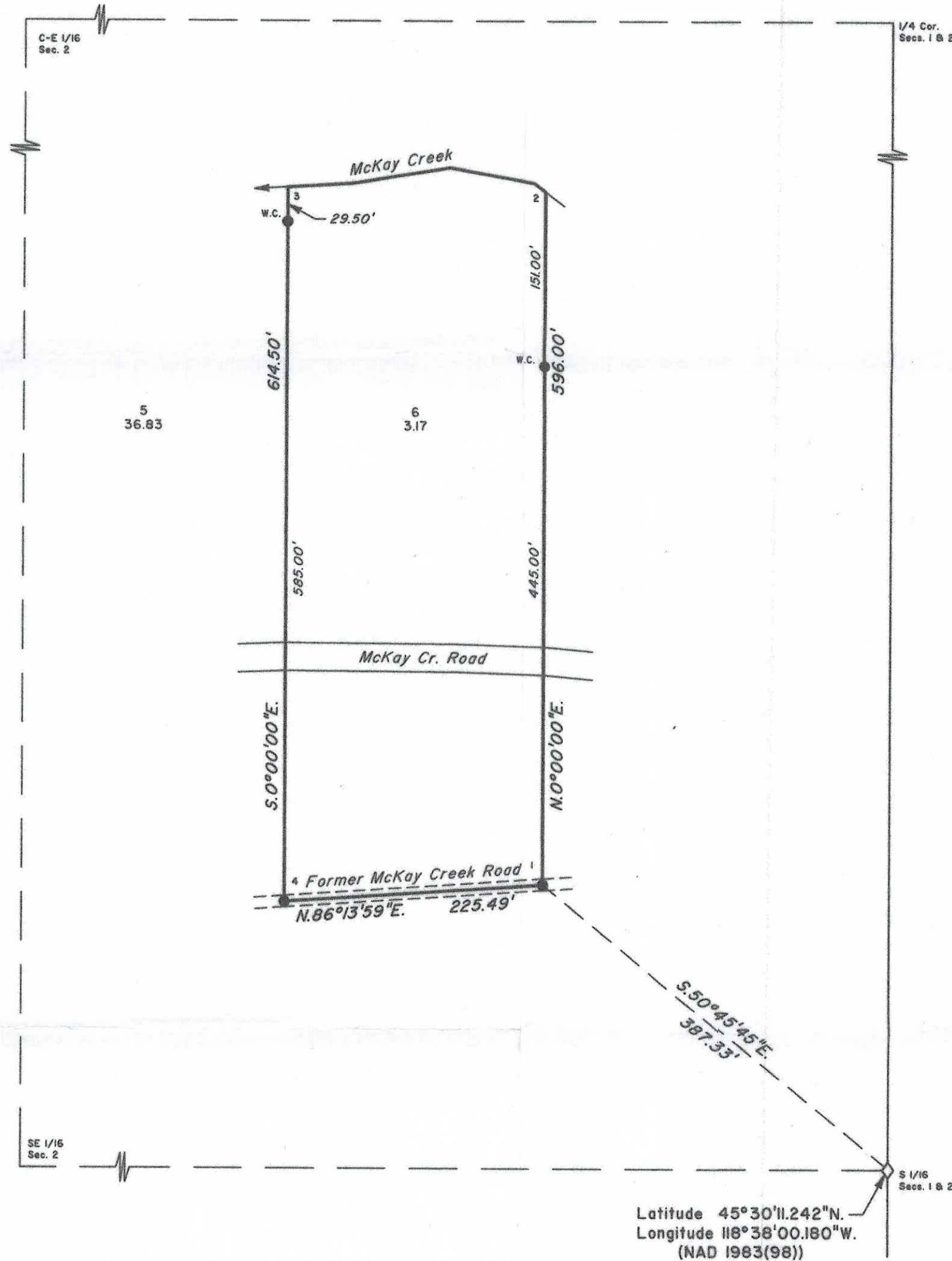
## METES-AND-BOUNDS SURVEY



LOCATION DIAGRAM

BEARING & DISTANCE TABLE  
Thread of McKay Creek

|   | Bearing       | Distance |
|---|---------------|----------|
| 2 | N.52°24'00"W. | 12.00'   |
|   | N.79°56'00"W. | 75.10'   |
|   | S.80°59'00"W. | 85.20'   |
|   | S.86°36'00"W. | 57.50'   |
| 3 |               |          |



A history of surveys is contained in the field notes.

This plat represents a metes-and-bounds survey of Lot 6 in section 2, T. 1 S., R. 33 E., Willamette Meridian, Oregon, designed to locate the lot corners in accordance with the legal description.

Measured distances and directions have been adjusted by Cadastral Measurement Management for Windows (WinCMM), computer software that incorporates a least squares adjustment routine. The adjusted bearings and distances are reported to the nearest second and 0.01 foot.

Except as shown hereon, the lottings and areas are as shown on the plat approved June 14, 1890.

The survey was executed by David A. Schlaich, Land Surveyor, U.S. Forest Service, beginning March 15, 2005, and completed June 7, 2005, pursuant to Special Instructions dated March 2, 2005, under Group Number 2103, Oregon.

Timber in this area consists of pine and cottonwood trees.

LEGEND

- ◊ Original corner previously remonumented
- Corner established or reestablished this survey

UNITED STATES DEPARTMENT OF THE INTERIOR  
BUREAU OF LAND MANAGEMENT

Portland, Oregon

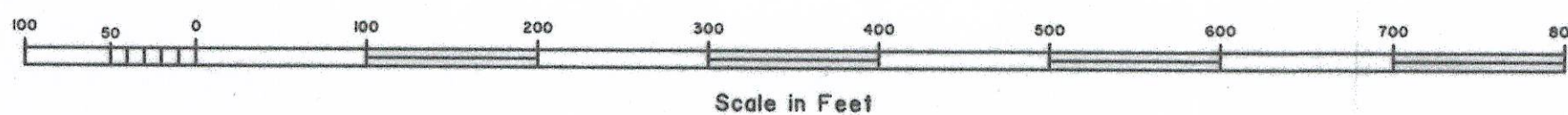
July 6, 2006

This plat is strictly conformable to the approved field notes, and the survey, having been correctly executed in accordance with the requirements of law and the regulations of this Bureau, is hereby accepted.

For the Director

*Mary J. M. Hunt*

Chief Cadastral Surveyor of Oregon



Mean magnetic declination 16°15' East

RECEIVED BY  
Umatilla County Surveyor  
Date 1-09  
Rec'd by KK  
No. 09-008-B