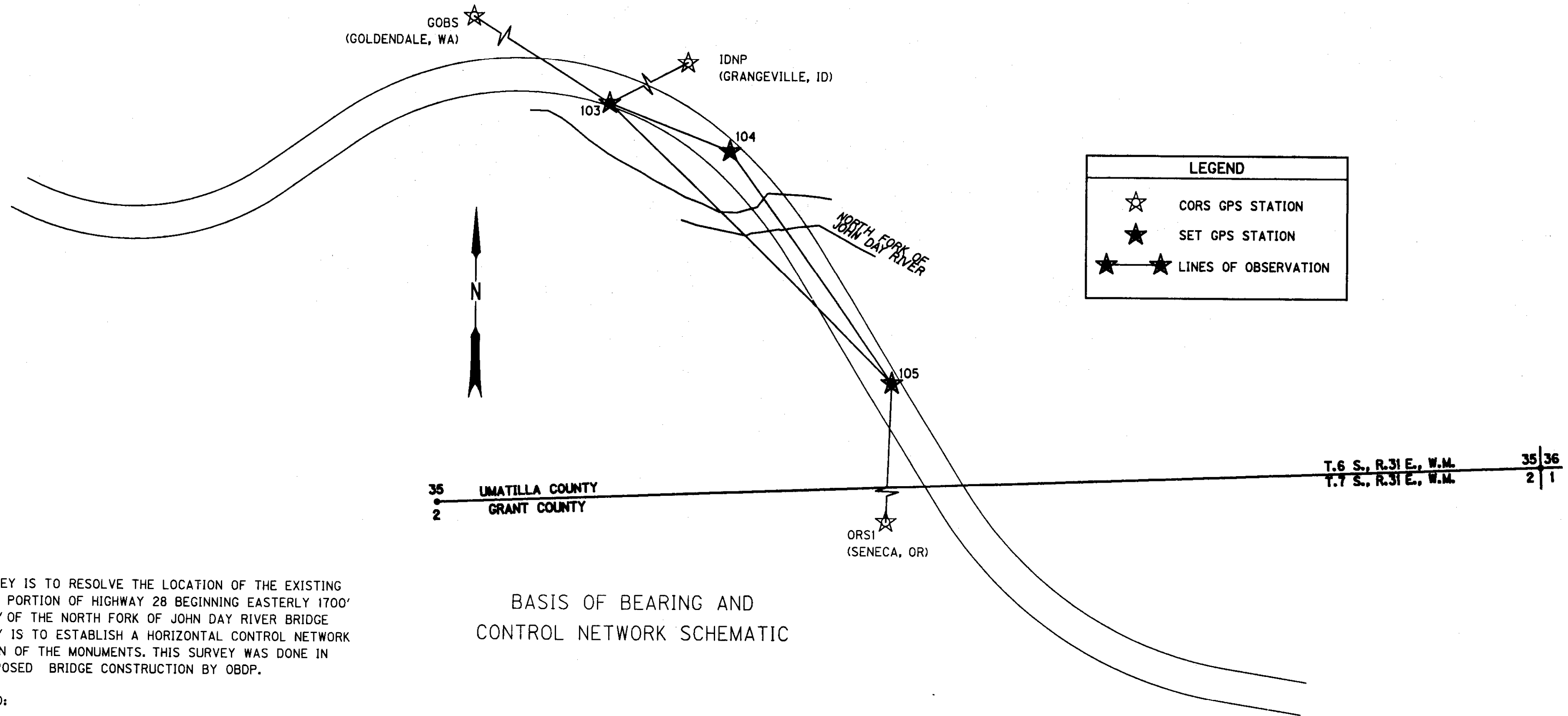


S.E. 1/4 SEC. 35 T.6 S. R. 31 E.  
 S.W. 1/4 SEC. 35 T.6 S. R. 31 E.



**NARRATIVE**

THE PURPOSE OF THIS SURVEY IS TO RESOLVE THE LOCATION OF THE EXISTING RIGHT-OF-WAY (R/W) FOR A PORTION OF HIGHWAY 28 BEGINNING EASTERLY 1700' AND ENDING WESTERLY 1800' OF THE NORTH FORK OF JOHN DAY RIVER BRIDGE NUMBER 04729. THIS SURVEY IS TO ESTABLISH A HORIZONTAL CONTROL NETWORK AND RECOVER THE POSITION OF THE MONUMENTS. THIS SURVEY WAS DONE IN PREPARATION FOR THE PROPOSED BRIDGE CONSTRUCTION BY OBDP.

**REFERENCE DOCUMENTS USED:**

- ODOT DRG 10B-6-4
- ODOT DRG 5B-33-19
- ODOT DRG 9C-36-1
- ODOT DRG 31V-106
- COUNTY SURVEY (CS) 94-01-B
- (CS) 86-141-B
- (CS) 83-03-B
- COUNTY ROAD 143 MAP & NOTES

THE GPS NETWORK CONTROL POINTS 103, 104, AND 105 WERE SET USING BASELINES BETWEEN PUBLISHED NGS CORS STATIONS GOBS, IDNP, AND ORSI IN DECEMBER OF 2006.

THE R/W CENTERLINE ALIGNMENT WAS RESOLVED BY HOLDING THE RECORD CENTERLINE ALIGNMENT DATA FROM ODOT DRG 10B-6-4. A SPLIT OF BEARING AND DISTANCE BETWEEN MONUMENTS 1016 AND 1017 WAS USED FOR THE CENTERLINE ON THE WESTERLY END, AND WAS ROTATED TO A 650' BEST-FIT LINE HELD FOR THE TANGENT CENTERLINE BETWEEN STATIONS 6+50 AND 13+00. AVERAGE RESIDUAL WHEN COMPARED TO RECORD PROJECT LESS THAN 0.5 FEET. CALCULATED CENTERLINE FITS CONSTRUCTED BACK OF BRIDGE PAVEMENT SEAT.

**BASIS OF BEARING AND CONTROL NETWORK SCHEMATIC**

THE BASIS OF BEARINGS WAS ESTABLISHED BY STATIC GPS OBSERVATION FROM NGS CORS STATIONS GOBS, IDNP, AND ORSI. BEARINGS SHOWN ARE STATE PLANE GRID.

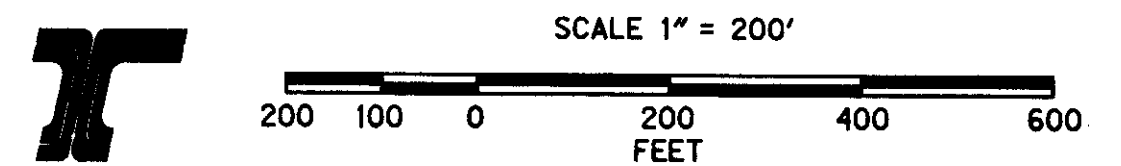
THIS SURVEY UTILIZES A LOCAL DATUM PROJECTION (LDP) WHICH IS RELATIVE TO THE OREGON COORDINATE SYSTEM (OCS) OF 1983 NORTH ZONE WITH RESPECT TO THE LOCAL LATITUDE AND GROUND ELEVATION. THE LDP COORDINATES DEFINE TRUE GROUND DISTANCES.

SURVEY WORK WAS PERFORMED BY WHITE SHIELD, INC. (WSI) SURVEY CREWS FROM NOVEMBER 2006 TO MARCH 2007. A CONTROL NETWORK WAS SET AND A "LEAST SQUARES" ADJUSTMENT WAS PERFORMED ON THE NETWORK POINT COORDINATES. THE RECOVERED MONUMENTS WERE THEN SURVEYED FROM THE CONTROL NETWORK. THE SURVEY EQUIPMENT USED WAS A TOPCON GTS-302 TOTAL STATION, A CARLSON EXPLORER II DATA COLLECTOR, A LEICA DNA10 DIGITAL LEVEL, AND A TRIMBLE GPS SYSTEM.

NETWORK POINTS SET DURING THIS SURVEY DO NOT REPRESENT PROPERTY LINES OR R/W LINES.

**NETWORK POINT COORDINATE TABLE**

PT. NO.	LDP NORTHING	LDP EASTING	DATE	DESCRIPTION
103	490053.213	8605096.506	12-2006	SET 1.5" ALUMINUM CAP "WHITE SHIELD" ON 5/8"X30" REBAR WITH SMALL CONCRETE COLLAR
104	489937.176	8605385.894	12-2006	SET 1.5" ALUMINUM CAP "WHITE SHIELD" ON 5/8"X30" REBAR WITH SMALL CONCRETE COLLAR
105	489384.431	8605777.134	12-2006	SET 1.5" ALUMINUM CAP "WHITE SHIELD" ON 5/8"X30" REBAR WITH SMALL CONCRETE COLLAR
GOBS	792266.717	8123786.488	12-2006	NGS CORS GPS SITE
IDNP	859097.942	9317741.716	12-2006	NGS CORS GPS SITE
ORSI	184825.184	8582299.412	12-2006	NGS CORS GPS SITE

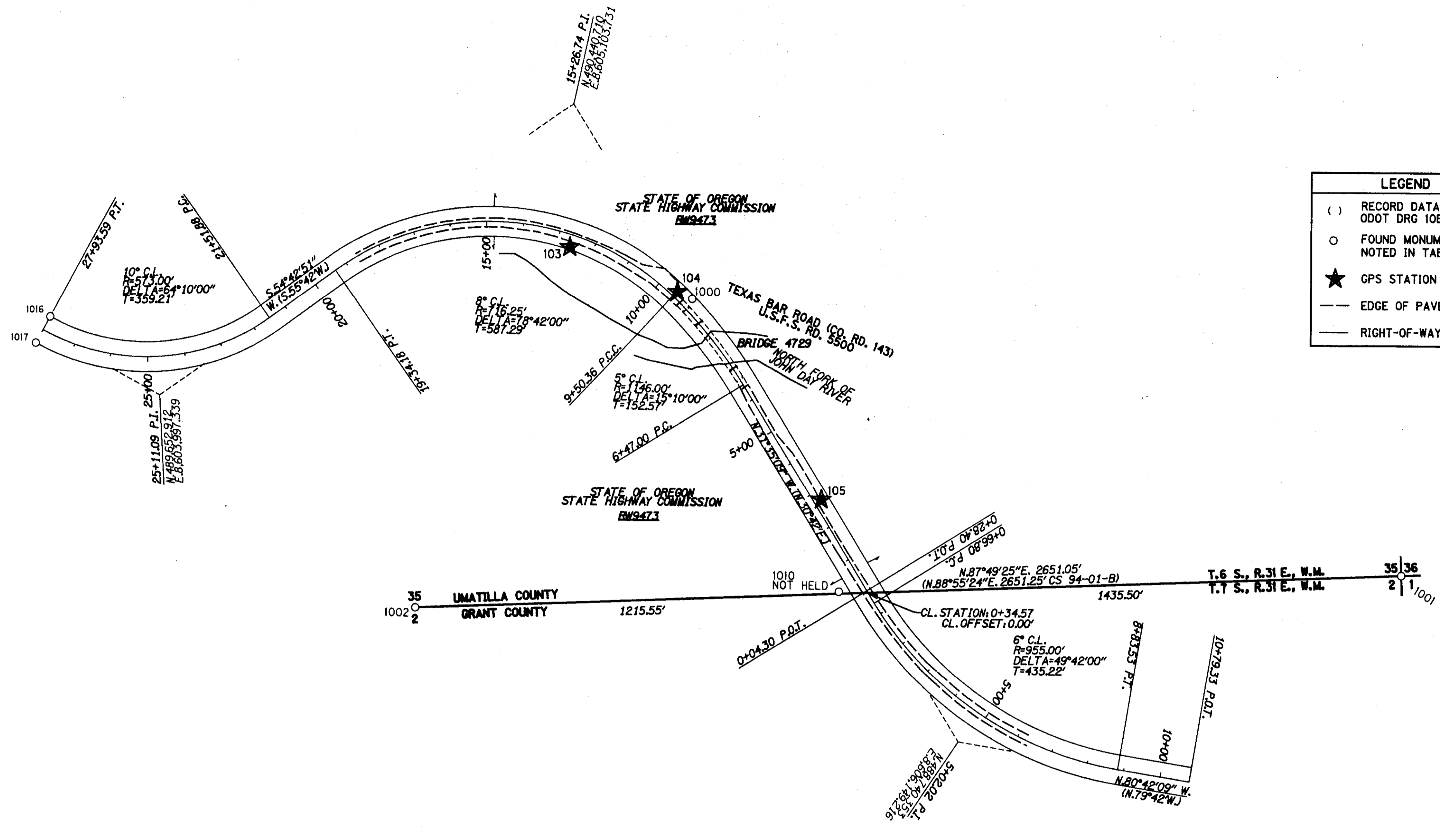


REGISTERED PROFESSIONAL LAND SURVEYOR  
*Michael P. Lejeune*  
 OREGON  
 JAN. 21, 1992  
 MICHAEL P. LEJEUNE  
 2635  
 EXPIRES 12/31/08

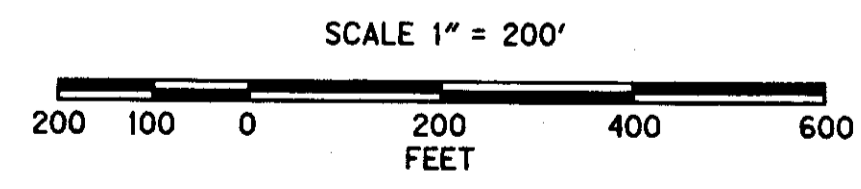
**OREGON DEPARTMENT OF TRANSPORTATION**  
 HORIZONTAL CONTROL, RECOVERY AND RETRACEMENT MAP  
 HIGHWAY 28 AT NORTH FORK OF JOHN DAY  
 UMATILLA COUNTY

FOR ODOT REGION 5, DISTRICT 13  
 3014 ISLAND AVENUE  
 LA GRANDE, OR 97850  
 RECEIVED BY  
 Umatilla County Surveyor  
 Date: 10-07  
 OCTOBER 12, 2007  
 SCALE: 1" = 200'  
 SHEET 1 OF 2

S.E. 1/4 SEC. 35 T.6 S. R. 31 E.  
 S.W. 1/4 SEC. 35 T.6 S. R. 31 E.



LEGEND	
( )	RECORD DATA PER ODOT DRG 10B-6-4
○	FOUND MONUMENT NOTED IN TABLE
★	GPS STATION
---	EDGE OF PAVEMENT
---	RIGHT-OF-WAY



RECOVERED MONUMENT LIST

PT. NO.	LDP NORTHING	LDP EASTING	STATION	OFFSET	DATE	DESCRIPTION & REFERENCE DOCUMENTS
1000	489918.218	8605425.673	9+08.27	31.04 RT	12-2006	FD 3-1/4" USFS ALUMINUM CAP
1001	489193.071	8607338.837	N/A	N/A	12-2006	FD 2.5" BRASS CAP MARKED "PLS 699", CS 86-141-B
1002	489092.393	8604689.697	21+99.94	863.23 LT	12-2006	FD 2-1/2" BRASS CAP ON 2-1/2" IRON PIPE, CS 94-01-B
1010	489140.638	8605825.937	0+40.99	65.73 LT	01-2007	FD 3" BUREAU OF PUBLIC ROADS BRASS CAP
1016	489860.287	8603701.311	27+93.64	39.65 RT	01-2007	FD 3" BUREAU OF PUBLIC ROADS BRASS CAP
1017	489790.696	8603663.293	27+93.55	39.65 LT	01-2007	FD 3" BUREAU OF PUBLIC ROADS BRASS CAP

REGISTERED PROFESSIONAL LAND SURVEYOR  
*Michael P. Lejeune*  
 OREGON  
 JAN. 21, 1992  
 MICHAEL P. LEJEUNE  
 2535  
 EXPIRES 12/31/08

OREGON DEPARTMENT OF TRANSPORTATION  
 HORIZONTAL CONTROL, RECOVERY AND RETRACEMENT MAP  
 HIGHWAY 28 AT NORTH FORK OF JOHN DAY  
 UMATILLA COUNTY

FOR ODOT REGION 5, DISTRICT 13  
 3014 ISLAND AVENUE  
 LA GRANDE, OR 97850

OCTOBER 12, 2007  
 SCALE: 1" = 200'  
 SHEET 2 OF 2

10-07  
 KK  
 02264-8