

RECORD OF SURVEY

NARRATIVE

THIS SURVEY WAS MADE AT THE REQUEST OF JOANNE TERNEY TO RECOVER OR MONUMENT THE FOUR CORNERS OF THE NE 1/4 OF SECTION 11, T4N., R30E., W.M. EXISTING MONUMENTS FOUND AND HELD ARE NOTED ON THIS RECORD OF SURVEY. SEE CORNER CERTIFICATES, FILED CONCURRENTLY WITH THIS RECORD OF SURVEY FOR ADDITIONAL INFORMATION ON MONUMENTED CORNERS.

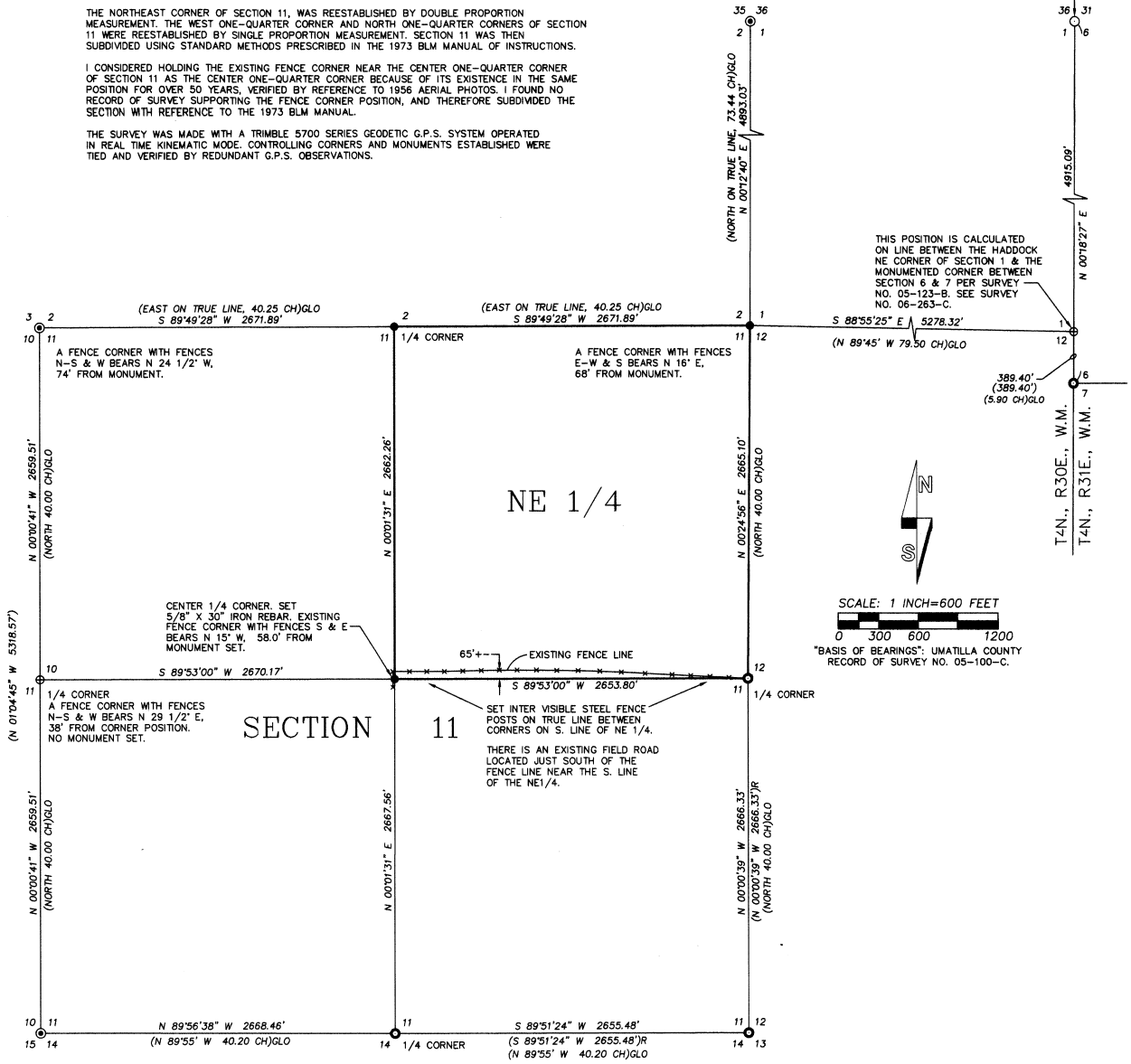
DAVE HADDOCK, PLS NO. 852 IS CURRENTLY DOING WORK NORTH OF OUR SURVEY AREA, AND WE COORDINATED WITH MR. HADDOCK TO DETERMINE WHETHER CORNER POSITIONS REPORTED ON HADDOCK SURVEY NO. 06-263-C, WOULD CHANGE. MR. HADDOCK PROVIDED INFORMATION REGARDING THE NORTHEAST CORNER OF SECTION 1, AT WHICH POINT HE HAS REESTABLISHED A NEW CORNER MONUMENT. I HELD CORNER MONUMENTS FROM THE HADDOCK SURVEY NO. 06-263-C AT THE NORTHEAST AND SOUTHWEST CORNERS OF SECTION 2.

THE NORTHEAST CORNER OF SECTION 11, WAS REESTABLISHED BY DOUBLE PROPORTION MEASUREMENT. THE WEST ONE-QUARTER CORNER AND NORTH ONE-QUARTER CORNERS OF SECTION 11 WERE REESTABLISHED BY SINGLE PROPORTION MEASUREMENT. SECTION 11 WAS THEN SUBDIVIDED USING STANDARD METHODS PRESCRIBED IN THE 1973 BLM MANUAL OF INSTRUCTIONS.

I CONSIDERED HOLDING THE EXISTING FENCE CORNER NEAR THE CENTER ONE-QUARTER CORNER OF SECTION 11 AS THE CENTER ONE-QUARTER CORNER BECAUSE OF ITS EXISTENCE IN THE SAME POSITION FOR OVER 50 YEARS, VERIFIED BY REFERENCE TO 1956 AERIAL PHOTOS. I FOUND NO RECORD OF SURVEY SUPPORTING THE FENCE CORNER POSITION, AND THEREFORE SUBDIVIDED THE SECTION WITH REFERENCE TO THE 1973 BLM MANUAL.

THE SURVEY WAS MADE WITH A TRIMBLE 5700 SERIES GEODETIC G.P.S. SYSTEM OPERATED IN REAL TIME KINEMATIC MODE. CONTROLLING CORNERS AND MONUMENTS ESTABLISHED WERE TIED AND VERIFIED BY REDUNDANT G.P.S. OBSERVATIONS.

FOUND AND HELD BRASS CAP PER DAVE HADDOCK ORPLS NO. 852. AS OF THE DATE OF SURVEY RESEARCH, THE MONUMENT IS NOT OF RECORD. HADDOCK HAS REJECTED THE BLM MONUMENT SET IN 1980 FOR THIS CORNER. THE REJECTED BLM MONUMENT BEARS S 67°47' W, 22.3' BY CALCULATION.



LEGEND

- SET 2 3/8" BRASS CAP ON 1 1/4 BY 30" GALVANIZED IRON PIPE UNLESS OTHERWISE NOTED. SEE CORNER CERTIFICATES FILED CONCURRENTLY.
- ⊙ FOUND AND HELD 2 3/8" BRASS CAP ON GALVANIZED IRON PIPE MONUMENT PER SURVEY NO. 06-263-C.
- ⊙ FOUND AND HELD 2 3/8" BRASS CAP ON GALVANIZED IRON PIPE MONUMENT PER SURVEY NO. 05-100-C OR 05-123-B.
- MONUMENT HELD AS NOTED.
- ⊕ CALCULATED POINT ONLY. NOTHING FOUND OR SET.
- (XOX) RECORD DIMENSION FROM SURVEY NO. 06-263-C.
- (XOX)R RECORD DIMENSION FROM SURVEY NO. 05-100-C.
- (XOX)GLO RECORD DIMENSION FROM GLO SURVEY BY D.S. PAYNE, UNDER CONTRACT NO. 100, DATED AUGUST 1, 1861.

REGISTERED
PROFESSIONAL
LAND SURVEYOR

W. R. Wells

OREGON
JULY 22, 1977
WILLIAM R. WELLS
1106
RENEWS 6/30/08

WILLIAM R. WELLS, PLS
2602 N.E. RIVERSIDE PLACE
P.O. BOX 1696
PENDLETON, OR 97801
PHONE: (541) 276-6362

DATE: 03/07 DR. BY: JMW
CK. BY: WRW NO: 07-1108

PROJECT: ✓TERNEYROT

SURVEY FOR:
JOANNE TERNEY

TO MONUMENT CORNERS OF
THE NORTHEAST QUARTER
OF SECTION 11, T4N., R30E., W.M.
UMATILLA COUNTY, OREGON.

RECEIVED BY
Umatilla County Surveyor
3-07
07-28-08