

Unplatted.

N. W. Horn Ave. 60'

show connection
to Pump House

80'

Unplatted.

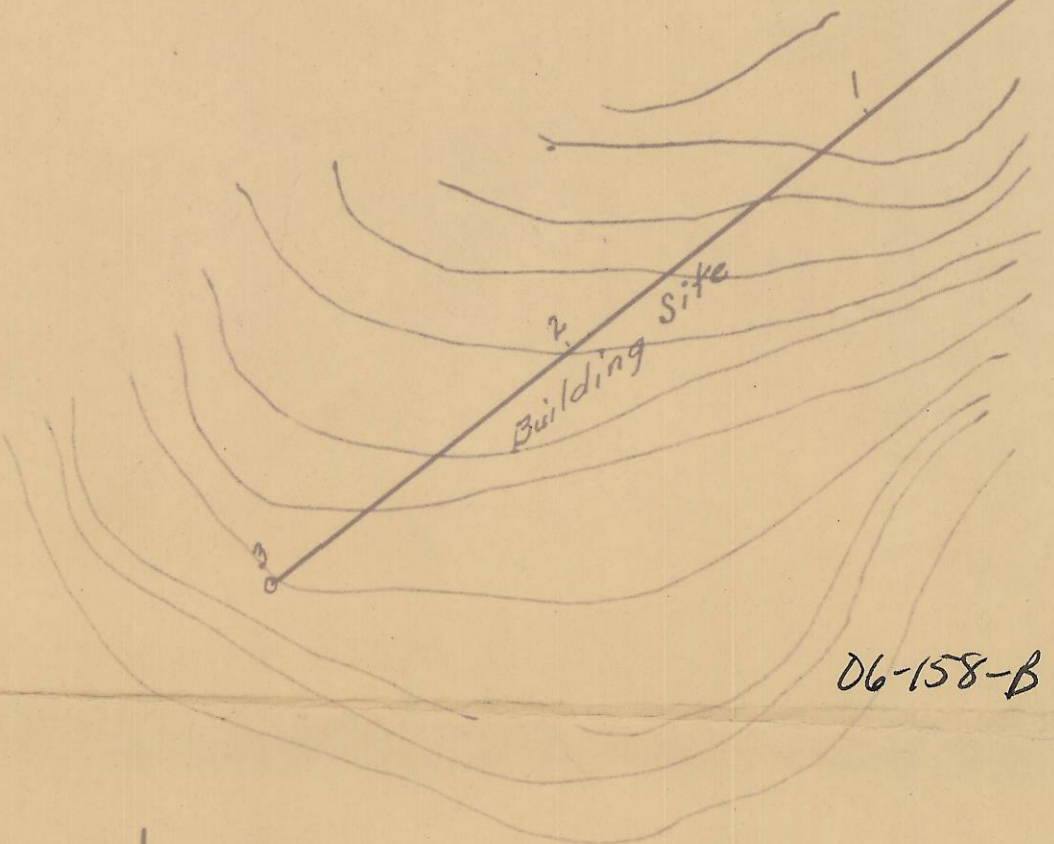
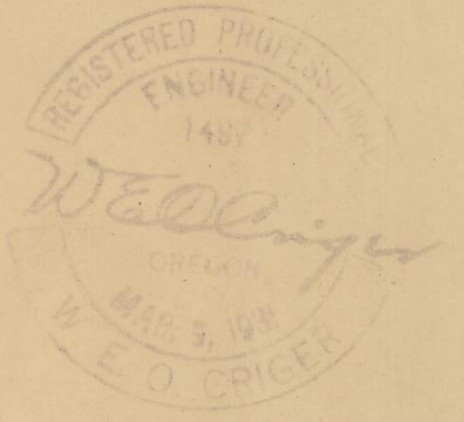
North Main St.

Livermore's Second Add.

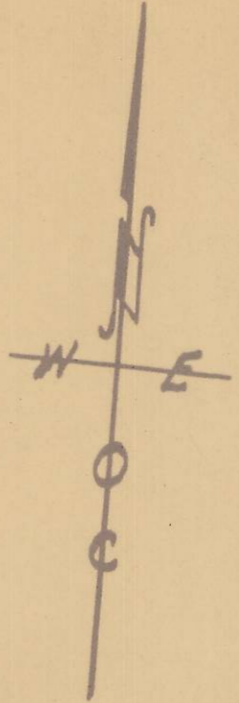
N.W. Gilliam Ave.

Livermore's

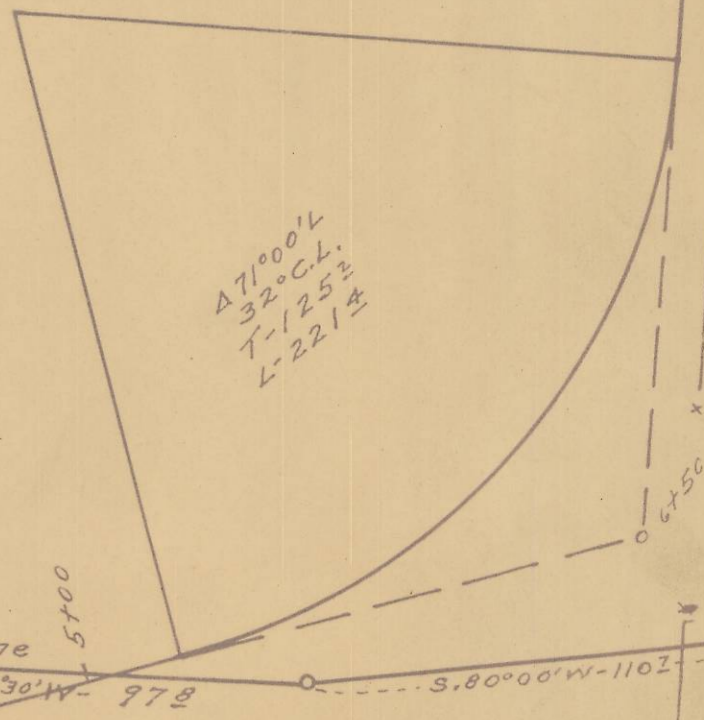
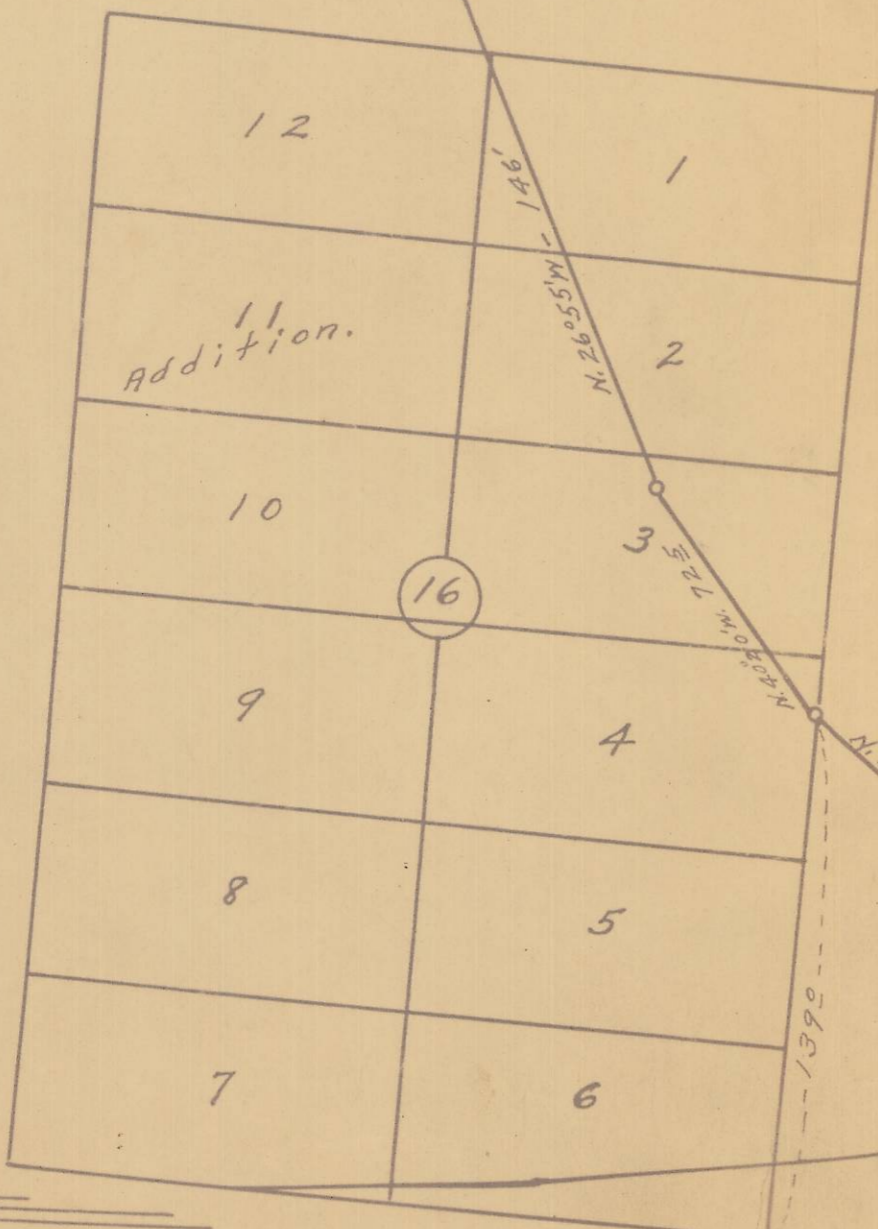
Plat showing
12" Water main feeder line to
Low Reservoir, across the S.E/4
of Sec. 3. T. 2N, R. 32 E.W.M.
Surveyed, staked & platted, Jan. 1949.
By W. E. O. Criger.
Scale: 1 inch = 50 Feet.



06-158-B



S.E/4 Sec. 3. T. 2. N., R. 32 E.W.M.



06-158-B