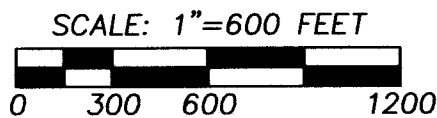


AMENDED RECORD OF SURVEY

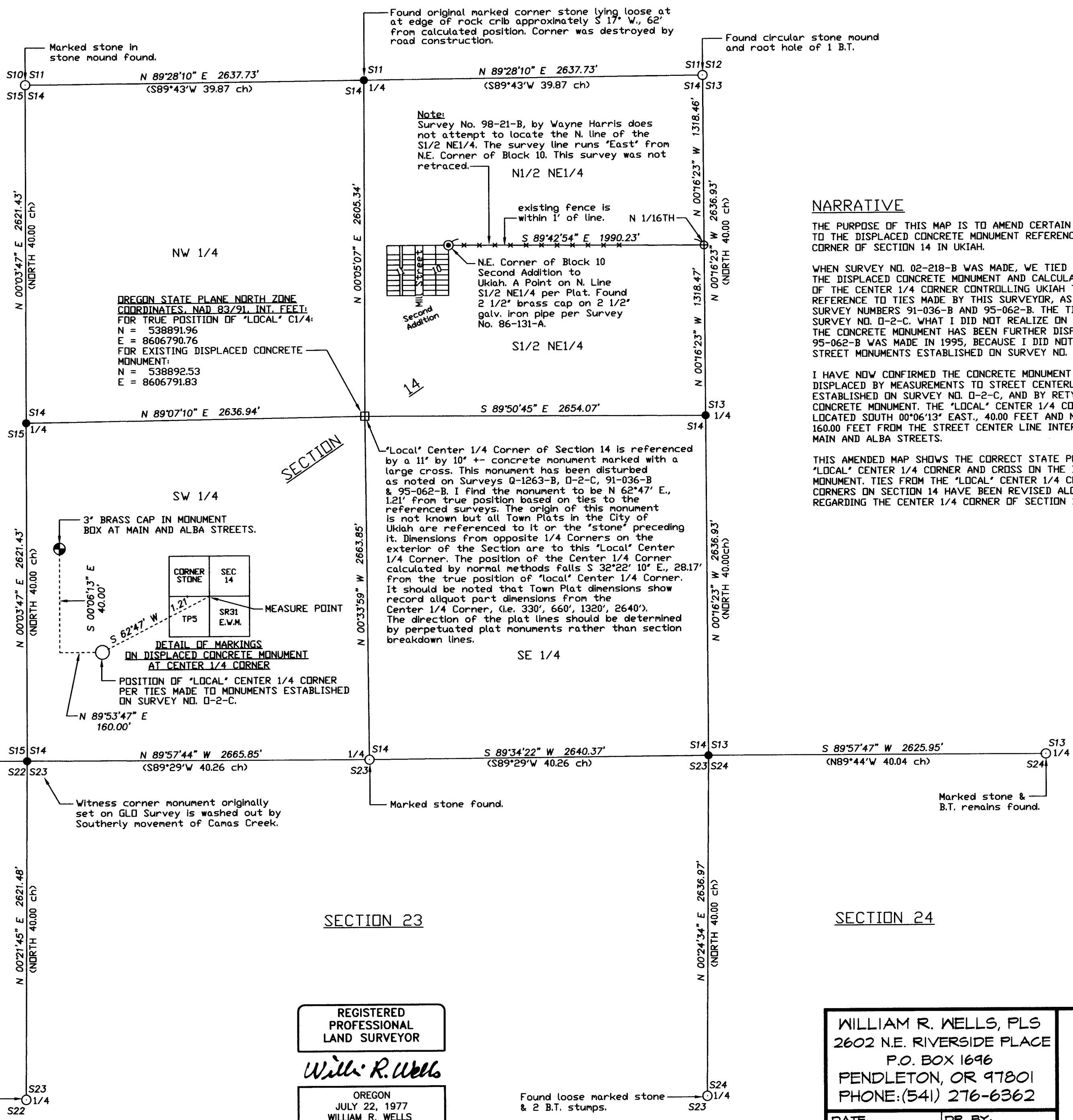
AN AMENDMENT OF UMATILLA COUNTY SURVEY NO. 02-218-B.
SECTIONS 14, 22, 23 & 24, T5S., R31E., W.M.,
UMATILLA COUNTY, OREGON



BASIS OF BEARINGS: BEARINGS ARE ROTATED TO TRUE NORTH
BASED ON G.P.S. GEODETIC OBSERVATION 150 FEET WEST OF
THE CENTER 1/4 OF SECTION 14.

LEGEND

- - FOUND ORIGINAL CORNER EVIDENCE AND REMONUMENTED WITH 2 1/2" BRASS CAP ON 1 1/4" X 30" GALVANIZED PIPE, SEE CORNER CERTIFICATE FILED WITH THIS SURVEY.
- - SET 2 1/2" BRASS CAP ON 1 1/4" X 30" GALVANIZED PIPE AT CALCULATED CORNER POSITION. SEE CORNER CERTIFICATE FILED WITH THIS SURVEY.
- ⊕ - CALCULATED POINT ONLY, NOT SET OR FOUND.
- (XDX) - RECORD DIMENSION FROM GLO SURVEY BY GEORGE S. PERSHIN UNDER CONTRACT NO. 373 DATED SEPTEMBER 17, 1880.



NARRATIVE

THE PURPOSE OF THIS MAP IS TO AMEND CERTAIN MEASUREMENTS AND TIES TO THE DISPLACED CONCRETE MONUMENT REFERENCING THE CENTER 1/4 CORNER OF SECTION 14 IN UKIAH.

WHEN SURVEY NO. 02-218-B WAS MADE, WE TIED THE LARGE CROSS ON TOP OF THE DISPLACED CONCRETE MONUMENT AND CALCULATED THE TRUE POSITION OF THE CENTER 1/4 CORNER CONTROLLING UKIAH TOWN PLATS WITH REFERENCE TO TIES MADE BY THIS SURVEYOR, AS REPORTED IN RECORD OF SURVEY NUMBERS 91-036-B AND 95-062-B. THE TIES ARE VERIFIED BY 1977 SURVEY NO. 0-2-C. WHAT I DID NOT REALIZE ON THE 2002 SURVEY, WAS THAT THE CONCRETE MONUMENT HAS BEEN FURTHER DISPLACED SINCE SURVEY NO. 95-062-B WAS MADE IN 1995, BECAUSE I DID NOT RE-CHECK DISTANCES TO STREET MONUMENTS ESTABLISHED ON SURVEY NO. 0-2-C.

I HAVE NOW CONFIRMED THE CONCRETE MONUMENT HAS BEEN FURTHER DISPLACED BY MEASUREMENTS TO STREET CENTERLINE MONUMENTS ESTABLISHED ON SURVEY NO. 0-2-C, AND BY RETYING THE DISPLACED CONCRETE MONUMENT. THE 'LOCAL' CENTER 1/4 CORNER POSITION IS LOCATED SOUTH 00°06'13" EAST., 40.00 FEET AND NORTH 89°53'47" EAST., 160.00 FEET FROM THE STREET CENTER LINE INTERSECTION MONUMENT AT MAIN AND ALBA STREETS.

THIS AMENDED MAP SHOWS THE CORRECT STATE PLANE COORDINATE FOR THE 'LOCAL' CENTER 1/4 CORNER AND CROSS ON THE DISPLACED CONCRETE MONUMENT. TIES FROM THE 'LOCAL' CENTER 1/4 CORNER TO THE EXTERIOR 1/4 CORNERS ON SECTION 14 HAVE BEEN REVISED ALONG WITH THE NOTES REGARDING THE CENTER 1/4 CORNER OF SECTION 14.

SECTION 22

SECTION 23

SECTION 24

REGISTERED PROFESSIONAL LAND SURVEYOR
William R. Wells
OREGON
JULY 22, 1977
WILLIAM R. WELLS
1106
RENEWS 6/30/06

WILLIAM R. WELLS, PLS 2602 N.E. RIVERSIDE PLACE P.O. BOX 1696 PENDLETON, OR 97801 PHONE: (541) 276-6362	
DATE: 08/04	DR. BY: WRW
CK BY: WRW	NO: 01-781

PROJECT: SURVEY FOR: UMATILLA COUNTY AN AMENDMENT OF SURVEY NO. 02-218-B. LOCATED IN SECTIONS 14, 22, 23 & 24, T5S., R31E., W.M., UMATILLA COUNTY, OREGON.

RECEIVED BY
Umatilla County Surveyor
Date 10-04
Rec'd By KR

04-171-B