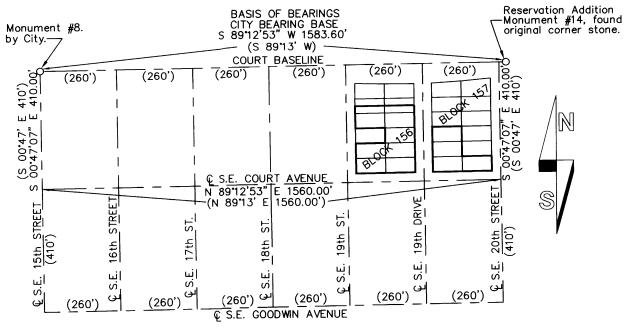
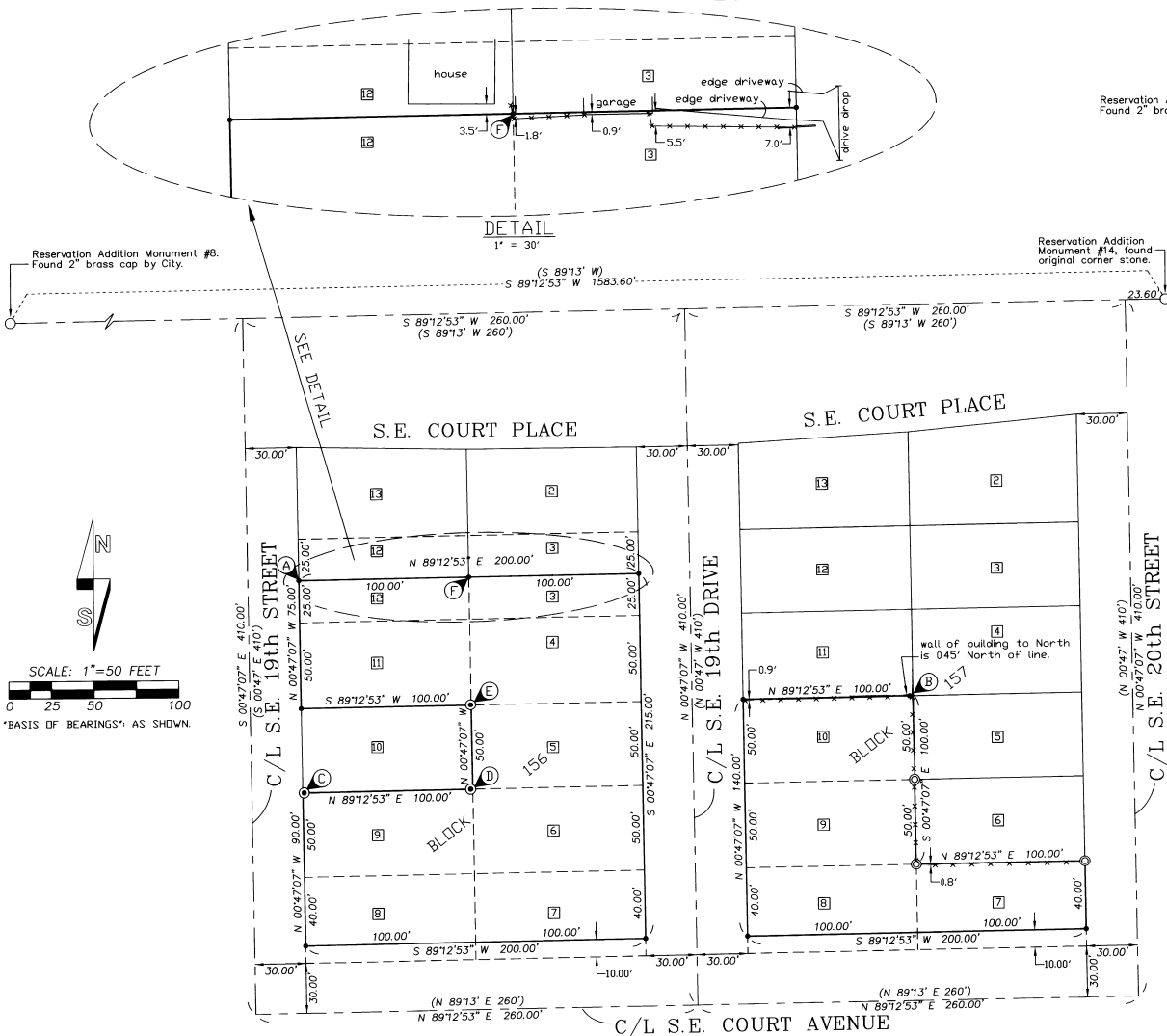


# RECORD OF SURVEY



### MONUMENT NOTES:

- (A) - CORNER FALLS IN CONCRETE RETAINING WALL, SET LEAD PLUG WITH 3/4" BRASS WASHER STAMPED "PLS 1106".
- (B) - SET WITNESS MONUMENT S 89°12'53" W., 2.00' FROM CORNER POINT.
- (C) - FOUND 5/8" REBAR WITH 1 1/4" ORANGE PLASTIC CAP MARKED "WTS 56295LS". THIS MONUMENT MARKS THE LOCATION OF WITNESS CORNER SET IN SURVEY NO. D-41-AX, AND BEARS N 85°44' E., 0.8' FROM TRUE CORNER POINT.
- (D) - FOUND 1" BRASS WASHER STAMPED "56295LS", SET AT POSITION OF WITNESS MONUMENT SET IN SURVEY NO. D-41-AX. MONUMENT BEARS N 88°02' W., 12" FROM TRUE CORNER POINT.
- (E) - FOUND 5/8" REBAR, FROM SURVEY NO. D-41-AX. THIS MONUMENT BEARS N 62°11' W., 0.35' FROM TRUE CORNER POINT.
- (F) - SET WITNESS MONUMENT S 89°12'53" W 1.00' FROM TRUE CORNER POINT.

### NOTES:

RECORD LOT DIMENSIONS FOR LOTS 3 THROUGH 12 OF BLOCKS 156 AND 157 ARE 50 FEET BY 100 FEET.

THE SOUTH 10 FEET OF LOTS 7 & 8, BLOCK 156 AND LOTS 7 & 8, BLOCK 157, HAVE BEEN ACQUIRED FOR STREET RIGHT-OF-WAY OF S.E. COURT AVENUE.

### LEGEND

- - SET 5/8" BY 24" IRON REBAR WITH 1 1/4" YELLOW PLASTIC CAP MARKED "DR PLS 1106 WA PLS 17372" UNLESS OTHERWISE NOTED.
- - MONUMENT FOUND AS NOTED.
- ⊙ - FOUND MONUMENT FROM SURVEY NO. D-41-AX. NOTE: WITNESS MONUMENTS ON THE SOUTH LINE OF LOT 10 WERE REFERENCED AND RESET BY STEVE HADDOCK, LS 56295, DURING RECENT CHURCH CONSTRUCTION PROJECT.
- ⊙ - FOUND 5/8" REBAR WITH 1 1/4" YELLOW PLASTIC CAP ESTABLISHED ON SURVEY NO. 95-166-B.
- (XOX) - INDICATES RECORD DIMENSION FROM PLAT OF RESERVE (A.K.A. RESERVATION) ADDITION.
- ⊙ - NOTE REGARDING MONUMENT SET OR FOUND, SEE "MONUMENT NOTES".
- x \* - INDICATES FENCE LINE.

### NARRATIVE:

THIS SURVEY WAS MADE AT THE REQUEST OF STEVE UMBARGER TO LOCATE THE BOUNDARIES OF THE FIRST ASSEMBLY OF GOD, OF PENDLETON, OREGON, PROPERTY IN BLOCKS 156 AND 157, RESERVE, (A.K.A. RESERVATION) ADDITION TO PENDLETON, OREGON.

CONTROLLING MONUMENTS HELD FOR THE SURVEY AND THOSE RECOVERED ARE SHOWN ON THIS RECORD OF SURVEY.

THE SURVEY WAS MADE WITH A 2 PERSON CREW USING A LEITZ SET 3B ONE SECOND TOTAL STATION. MEASUREMENTS WERE MADE BY A COMBINATION OF CLOSED TRAVERSES AND RADIAL TIES. MONUMENTS WERE ESTABLISHED BY RADIAL METHODS AND VERIFIED BY CHECK OBSERVATIONS TO SEPARATE BACK SIGHTS.

REGISTERED PROFESSIONAL LAND SURVEYOR

*Will. R. Wells*

OREGON  
JULY 22, 1977  
WILLIAM R. WELLS  
1106  
RENEWS 6/30/04

WILLIAM R. WELLS, PLS  
2602 N.E. RIVERSIDE PLACE  
P.O. BOX 1696  
PENDLETON, OR 97801  
PHONE: (541) 276-6362

DATE: 06/02 DR. BY: WRW  
CK. BY: WRW NO: 03-874

PREPARED BY  
Umella County Surveyor  
Date: 7-03  
Rec'd By: KR  
No. 03-98-R V.F.A.G.C.

PROJECT:  
SURVEY FOR:  
FIRST ASSEMBLY OF GOD,  
OF PENDLETON, OREGON.

IN BLOCKS 156 & 157,  
RESERVATION ADDITION, PENDLETON, OREGON,  
SITUATED IN THE NE 1/4 OF SECTION 11,  
& NW 1/4 OF SECTION 12, T2N., R32E., W.M.,  
UMATILLA COUNTY, OREGON.