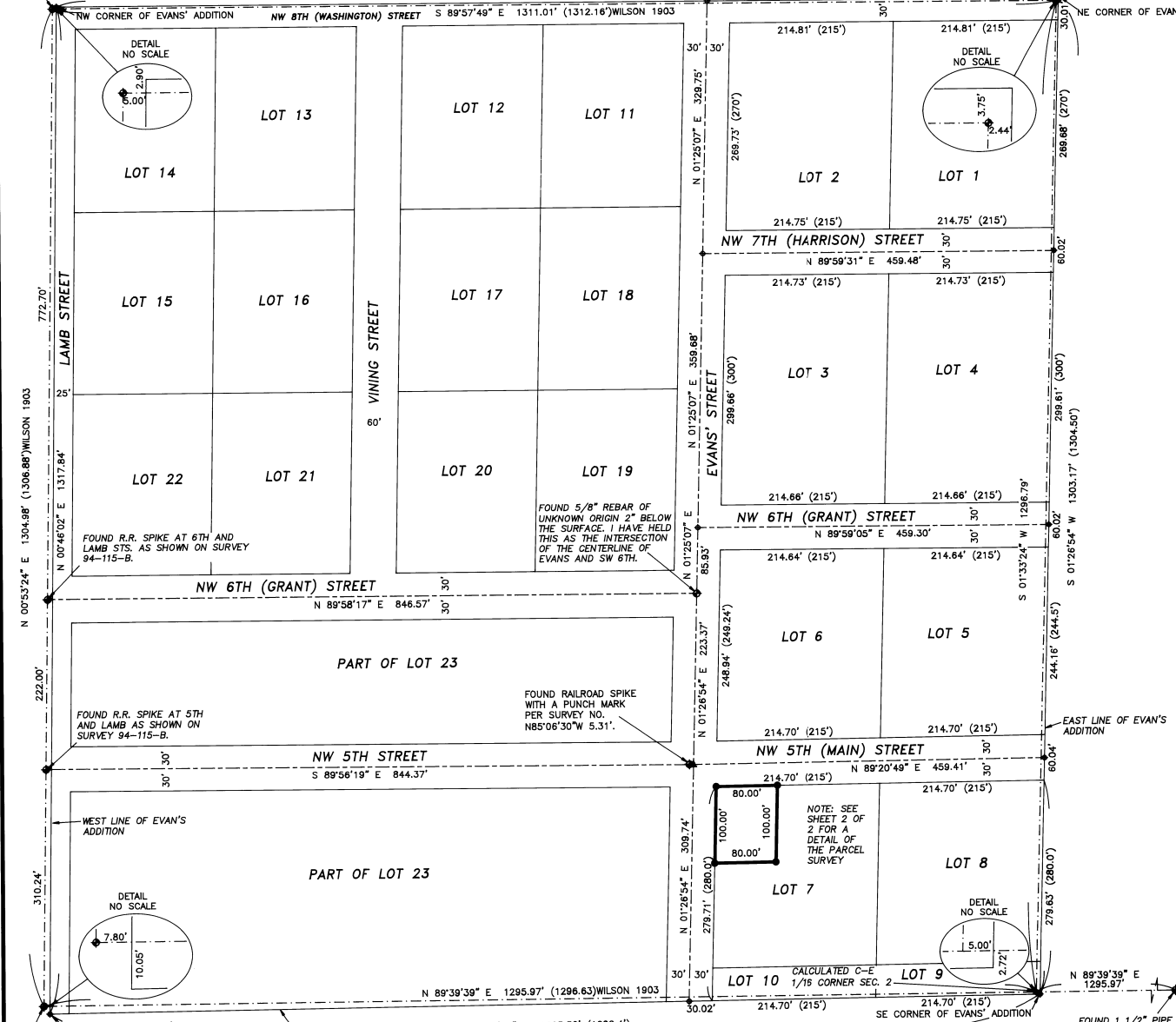


3" BRASS CAP IN MON. CASE STAMPED "C-N 1/16 S.2" AT 8TH AND LAMB STS. AS SHOWN ON SURVEY 94-115-B. N.W. COR. OF THE S.W. 1/4 OF THE N.E. 1/4 OF S.2. THE POSITION OF THE NW CORNER OF EVAN'S ADDITION AS COMPUTED FROM INFORMATION SHOWN ON THE MAP FILED IN THE OFFICE OF THE MILTON-FREEWATER CITY ENGINEER DATED MARCH 17, 1902 BY L.A. WILSON, BEARS N60°06'28"E 5.81 FEET.
 N 89°59'57" E 1308.50' (1309.6)

NORTH LINE OF EVAN'S ADDITION 459.63'

3" BRASS CAP IN CASE AT N. MAIN AND 8TH ST. AS SHOWN ON SURVEY 94-123-B. N.E. COR. OF THE S.W. 1/4 OF THE N.E. 1/4 OF S. 2. THE POSITION OF THE NE CORNER OF EVAN'S ADDITION AS COMPUTED FROM INFORMATION SHOWN ON THE MAP FILED IN THE OFFICE OF THE MILTON-FREEWATER CITY ENGINEER DATED MARCH 17, 1902 BY L.A. WILSON, BEARS N34°03'24"E 4.53 FEET.



BASIS OF BEARING
 SOUTH 00°54'48" WEST BETWEEN THE MONUMENT AT THE CENTER 1/4 CORNER OF SECTION 2 AND THE MONUMENT AT THE INTERSECTION OF 5TH AND LAMB STS AS SHOWN ON SURVEY 94-115-B.

- LEGEND**
- DEED LINE
 - * — * — FENCE
 - ◆ FOUND SURVEY MONUMENT AS NOTED
 - ▲ SET "MAG" NAIL AND WASHER STAMPED "OR 02820 WA 18619" ATTACHED
 - SET 5/8" X 30" IRON REBAR WITH A YELLOW PLASTIC CAP STAMPED "TOMKINS SURVEYING" ATTACHED.
 - ◆ CALCULATED POSITION NOTHING FOUND OR SET.
 - (XOX) RECORD DIMENSION PER THE PLAT OF EVAN'S ADDITION TO THE TOWN OF MILTON
 - - - CENTERLINE
 - BOUNDARY OR BLOCK LINES OF EVAN'S ADDITION PER THE MAP OF SURVEY ON BY L.A. WILSON, CITY ENGINEER DATED MARCH 17, 1903 ON FILE IN THE MILTON-FREEWATER CITY ENGINEERS OFFICE.

NARRATIVE
 THIS SURVEY WAS PERFORMED AT THE REQUEST OF MIKE HANFORD TO SURVEY AND MARK THE CORNERS OF THE PROPERTY DESCRIBED BY DEED RECORDED IN BOOK 2 OF DEED RECORDS, PAGE 402 RECORDS OF UMATILLA COUNTY, OREGON AND IS A PORTION OF BLOCK 7 OF EVAN'S ADDITION TO THE CITY OF MILTON (NOW MILTON-FREEWATER).

THE PLAT OF EVAN'S ADDITION WAS PREPARED BY L.A. WILSON CITY SURVEYOR AND DATED OCTOBER 9, 1892. THE OFFICIAL COPY OF THE PLAT FILED IN THE RECORDS OF TOWN PLAT OF UMATILLA COUNTY INDICATES THAT IT WAS FILED FOR RECORD ON DECEMBER 18, 1903. A MAP PREPARED BY L.A. WILSON CITY ENGINEER ON FILE IN THE RECORDS OF THE ENGINEERS OFFICE OF THE CITY OF MILTON-FREEWATER DATED MARCH 17, 1903 SHOWS MONUMENTS MARKING THE CORNERS OF THE SW 1/4 OF THE NE 1/4 OF SECTION 2 AND THEIR RELATIONSHIP TO THE MONUMENTS MARKING THE CORNERS OF EVAN'S ADDITION. THE MONUMENTS THAT HAVE BEEN PERPETUATED APPEAR TO BE THE CORNERS OF THE SW 1/4 OF THE NW 1/4 OF SECTION 2. I HAVE COMPUTED THE POSITIONS OF THE CORNERS OF EVAN'S ADDITION BASED ON L.A. WILSON'S 1903 MAP. THE CENTERLINE OF EVANS STREET WAS DETERMINED BY COMPUTING THE PROPORTIONATE LOCATION ALONG THE NORTH LINE OF EVAN'S ADDITION ACCORDING TO THE OFFICIAL PLAT. I HAVE HELD THE FOUND 5/8" IRON PIN AT THE INTERSECTION OF NW 6TH AND EVANS FOR THE ALIGNMENT OF THE NORTHERLY PORTION EVANS STREET. I HAVE HELD THE PORTION OF EVANS STREET SOUTH OF THE CENTERLINE OF 6TH STREET AS BEING PARALLEL WITH THE COMPUTED EAST LINE OF EVAN'S ADDITION. THE LOCATION FOR THE CENTERLINE OF SW 5TH, FORMERLY MAIN STREET, IS BASED ON PROPORTIONED DISTANCES ALONG THE CENTERLINE OF EVANS STREET AND ALONG THE COMPUTED EAST LINE OF EVANS ADDITION.

THIS SURVEY WAS PERFORMED USING A TOPCON DUAL FREQUENCY GEODETIC GLOBAL POSITIONING SYSTEM (GPS) HAVING STANDARD ERRORS OF 1 CM + 2 PPM TIMES BASELINE LENGTH UTILIZING RTK CAPABILITIES AND A GEODIMETER GDM 610 ROBOTIC TOTAL STATION HAVING STANDARD ERRORS OF 0.00001" ANGULAR AND 2 MM ± 2 PPM TIMES DISTANCE. ALL MONUMENTS SHOWN WERE VISITED AT THE TIME OF THIS SURVEY.

SHEET 1 OF 2

A SURVEY OF A PORTION OF BLOCK 7 IN EVAN'S ADDITION TO MILTON FREEWATER, BEING LOCATED IN THE SW 1/4 OF THE NE 1/4 OF SECTION 2, TWP. 5 NORTH, RGE. 35 EAST, W.M., UMATILLA COUNTY, OREGON.
 FOR: MIKE HANFORD, C/O NITA'S VALLEY PROPERTIES, INC, 311 S. MAIN STREET, MILTON-FREEWATER, OR 97801

TOMKINS LAND SURVEYING, INC.		DATE
20 EAST POPLAR ST. SUITE 204 WALLA WALLA, WA. 99362 (509) 522-4843		APRIL 2003
115 WEST HERMISTON AV. SUITE 140 HERMISTON, OR. 97838 (541) 564-4448		SCALE
		1" = 100'

REGISTERED PROFESSIONAL LAND SURVEYOR

Greg E. Flowers

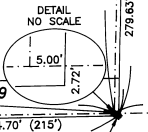
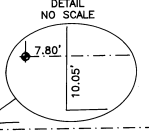
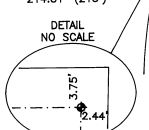
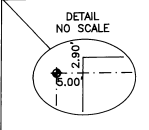
OREGON
 JUNE 30, 1997
 GREG E. FLOWERS
 02820LS
 RENEWS 12/31/03
 4/1/03

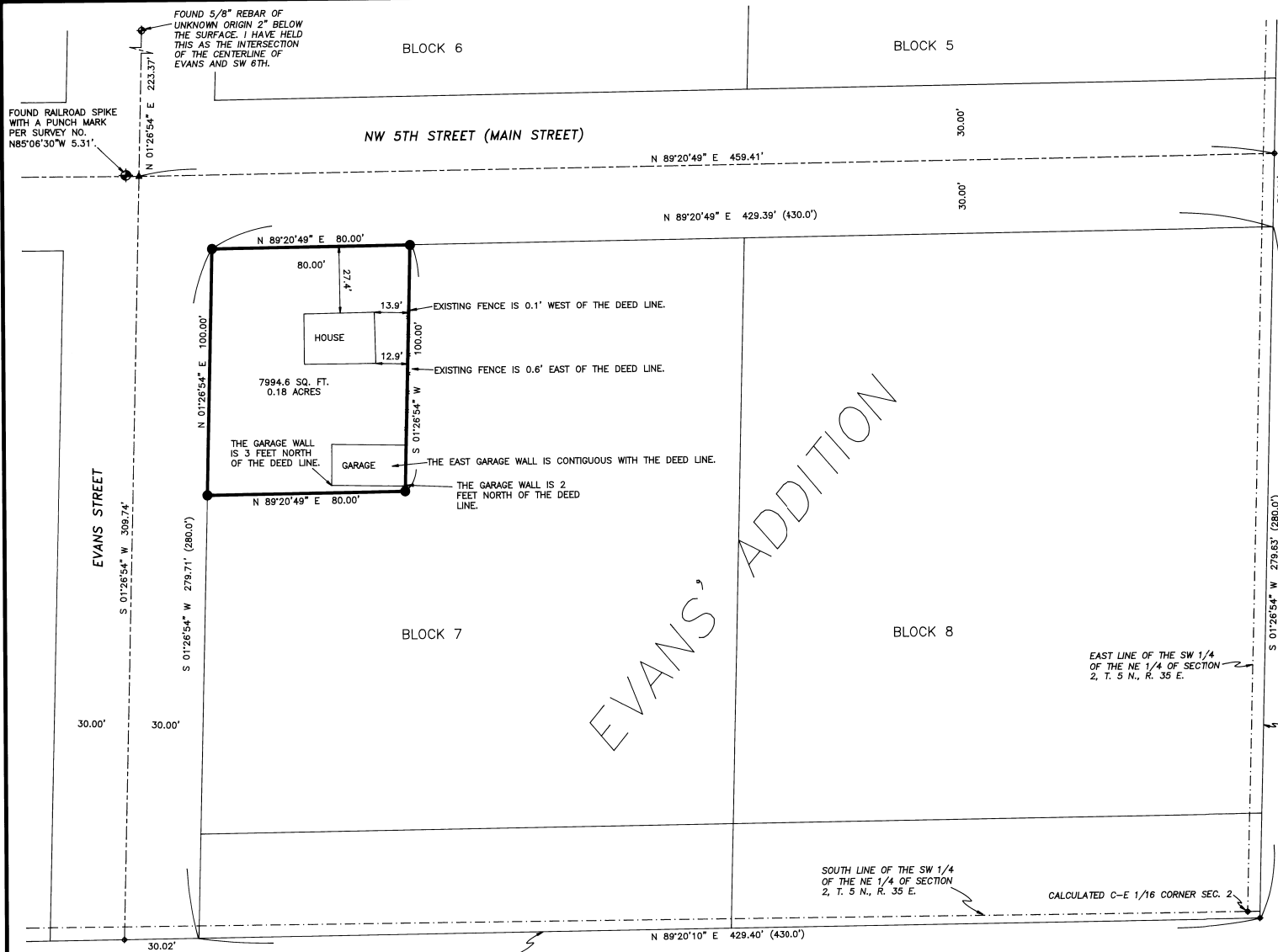
THE POSITION OF THE SE CORNER OF EVAN'S ADDITION AS COMPUTED FROM INFORMATION SHOWN ON THE MAP FILED IN THE OFFICE OF THE MILTON-FREEWATER CITY ENGINEER DATED MARCH 17, 1902 BY L.A. WILSON, BEARS S61°22'41"E 5.62 FEET FROM THE MATHEMATICAL POSITION OF THE CENTER EAST 1/16 CORNER OF SECTION 2.

FOUND 1 1/2" PIPE WITH YELLOW CAP STAMPED "TOMKINS SURVEYING" INSIDE AT THE EAST 1/4 CORNER OF SECTION 2 AS SHOWN ON SURVEY 97-110-B.

RECEIVED BY
 Umatilla County Surveyors
 Date 4-23
 Rec'd By KE
 No. 03-12-B

FOUND R.R. IRON IN A MON. CASE AT THE CENTER 1/4 CORNER OF SECTION 2 AS SHOWN ON SURVEY 94-115-B. THE POSITION OF THE SW CORNER OF EVAN'S ADDITION AS COMPUTED FROM INFORMATION SHOWN ON THE MAP FILED IN THE OFFICE OF THE MILTON-FREEWATER CITY ENGINEER DATED MARCH 17, 1902 BY L.A. WILSON, BEARS S37°27'47"E 12.60 FEET.





FOUND 5/8" REBAR OF UNKNOWN ORIGIN 2" BELOW THE SURFACE. I HAVE HELD THIS AS THE INTERSECTION OF THE CENTERLINE OF EVANS AND SW 6TH.

FOUND RAILROAD SPIKE WITH A PUNCH MARK PER SURVEY NO. N85°06'30"W 5.31'

BLOCK 6

BLOCK 5

NW 5TH STREET (MAIN STREET)

EVANS STREET

BLOCK 7

BLOCK 8

EVANS' ADDITION

BASIS OF BEARING
SOUTH 00°54'48" WEST BETWEEN THE MONUMENT AT THE CENTER 1/4 CORNER OF SECTION 2 AND THE MONUMENT AT THE INTERSECTION OF 5TH AND LAMB STS AS SHOWN ON SURVEY 94-115-B.

LEGEND

- DEED LINE
- +—+— FENCE
- ⊕ FOUND SURVEY MONUMENT AS NOTED
- ▲ SET "MAC" NAIL WASHER STAMPED "OR 02820 WA 19619" ATTACHED
- SET 5/8" X 30" IRON REBAR WITH A YELLOW PLASTIC CAP STAMPED "TOMKINS SURVEYING" ATTACHED.
- ◆ CALCULATED POSITION NOTHING FOUND OR SET.
- (XOX) RECORD DIMENSION PER THE PLAT OF EVANS' ADDITION TO THE TOWN OF MILTON

NOTE: SEE SHEET 1 OF 2 FOR A DETAILED MAP OF HOW THE BOUNDARIES OF BLOCK 7 IN EVANS' ADDITION WERE DEVELOPED.



LEGAL DESCRIPTION

DEED, BOOK 182, PAGE 402
BEGINNING AT THE NORTHWEST CORNER OF BLOCK 7 IN EVANS' ADDITION TO MILTON, RUNNING THENCE EAST 80 FEET; THENCE SOUTH 100 FEET; THENCE WEST 80 FEET; THENCE NORTH 100 FEET TO THE PLACE OF BEGINNING.

SOUTH LINE OF EVANS' ADDITION ACCORDING TO THE MAP ON RECORD IN THE OFFICE OF THE MILTON-FREEWATER CITY ENGINEERS OFFICE BY L.A. WILSON, CITY ENGINEER. DATED MARCH 17, 1903.

REGISTERED PROFESSIONAL LAND SURVEYOR

Greg E. Flowers
OREGON
JUNE 30, 1997
GREG E. FLOWERS
02820LS

RENEWS 12/31/03 RECEIVED
4/10/03 Umatilla County
Date: 4-03
Rec'd by: KK
No. 03-62-B

SHEET 2 OF 2

A SURVEY OF A PORTION OF BLOCK 7 IN EVANS' ADDITION TO MILTON FREEWATER, BEING LOCATED IN THE SW 1/4 OF THE NE 1/4 OF SECTION 2, TWP. 5 NORTH, RGE. 35 EAST, W.M., UMATILLA COUNTY, OREGON.

FOR: MIKE HANFORD, C/O NITA'S VALLEY PROPERTIES, INC., 311 S. MAIN STREET, MILTON-FREEWATER, OR 97801

TOMKINS LAND SURVEYING, INC.		DATE
20 EAST POPLAR ST. SUITE 204 WALLA WALLA, WA. 99362 (509) 522-4843		APRIL 2003
115 WEST HERMISTON AV. SUITE 140 HERMISTON, OR. 97838 (541) 564-4448		SCALE 1"= 30'
MIKE_HANFORD.DWG		