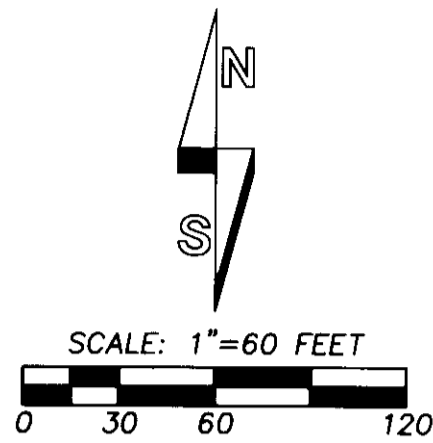
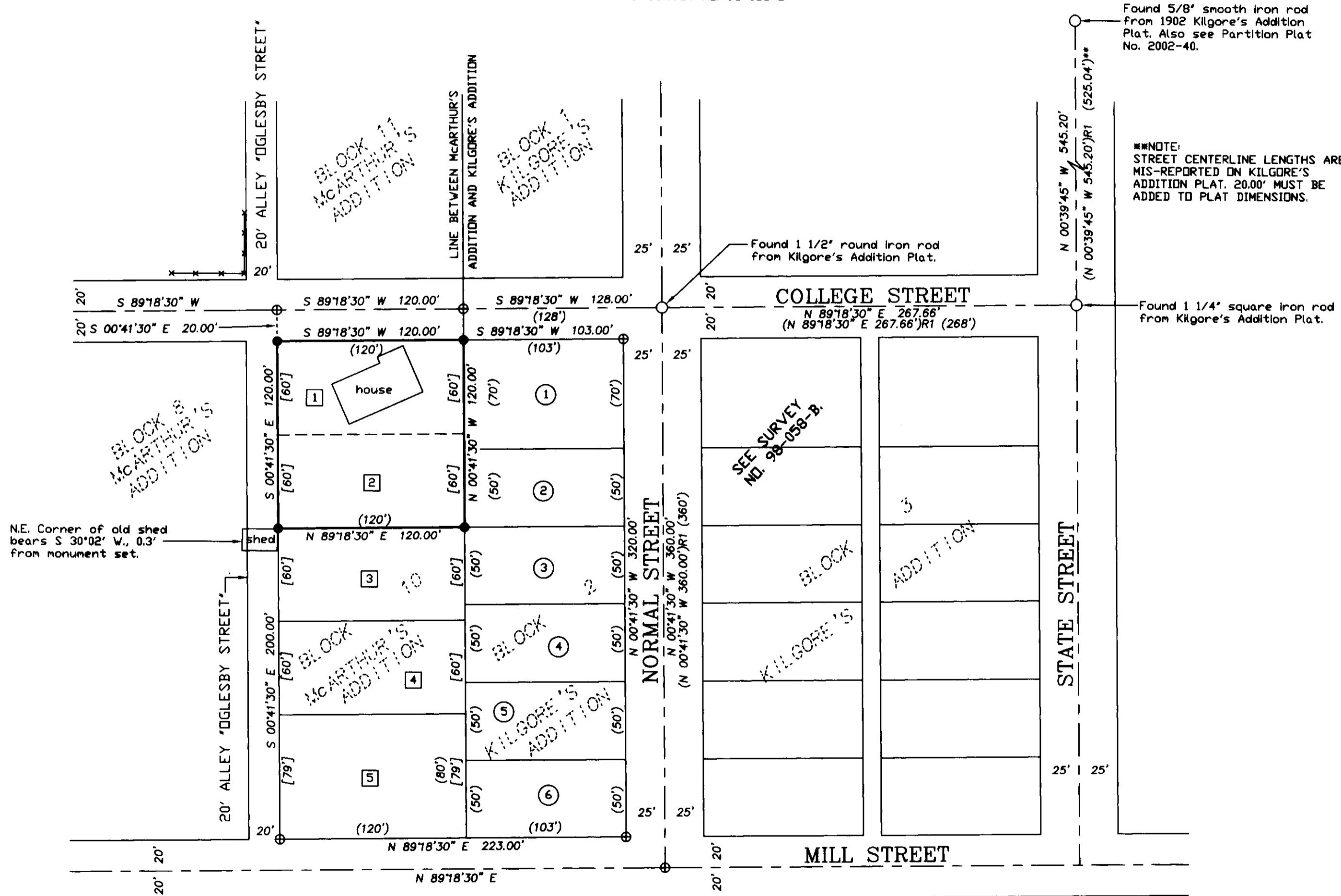


# RECORD OF SURVEY



\*BASIS OF BEARINGS: SURVEY NO. 98-058-B



Found 5/8" smooth iron rod from 1902 Kilgore's Addition Plat. Also see Partition Plat No. 2002-40.

NOTE: STREET CENTERLINE LENGTHS ARE MIS-REPORTED ON KILGORE'S ADDITION PLAT. 20.00' MUST BE ADDED TO PLAT DIMENSIONS.

Found 1 1/4" square iron rod from Kilgore's Addition Plat.

### LEGEND

- - SET 5/8" BY 30" REBAR WITH 1 1/4" YELLOW PLASTIC CAP MARKED 'DRPLS 1106 WA PLS 17372'.
- - FOUND MONUMENT FROM KILGORE'S ADDITION PLAT AS NOTED.
- (OXD) - RECORD DIMENSION FROM KILGORE'S ADDITION PLAT.
- (OXD) - RECORD DIMENSION FROM McARTHUR'S ADDITION PLAT.
- (OXD)R1 - RECORD DIMENSION FROM SURVEY NO. 98-058-B OR PARTITION PLAT NO. 2002-40.
- ② - LOT NUMBER FROM McARTHUR'S ADDITION.
- ⓪ - LOT NUMBER FROM KILGORE'S ADDITION.

### NARRATIVE:

THIS SURVEY WAS MADE AT THE REQUEST OF GREG STEEN TO MONUMENT THE OVERALL BOUNDARIES OF LOTS 1 AND 2, BLOCK 10, McARTHUR'S ADDITION.

THE PLAT OF McARTHUR'S ADDITION SHOWING BLOCK 10 WAS FILED FOR RECORD IN BOOK D, PAGE 911, UMATILLA COUNTY RECORDS ON MAY 27TH, 1878. ANOTHER PLAT OF McARTHUR'S ADDITION WAS RECORDED ON JANUARY 11, 1878, AT BOOK C, PAGE 795, UMATILLA COUNTY RECORDS. THE PLAT RECORDED ON JANUARY 11TH, 1878 DID NOT SHOW BLOCK 10 AND LOTTING AND SOME DIMENSIONS CONFLICT WITH THE PLAT FILED IN MAY, 1878. THE VERSION OF THE PLAT RECORDED ON MAY 27TH IS THE CURRENT APPROVED PLAT BASED ON TAX MAP AND LAND CONVEYANCE RECORDS.

IN OCTOBER, 1902, KILGORE'S ADDITION PLAT FILED IMMEDIATELY EAST OF AND ABUTTING THE McARTHUR'S ADDITION PLAT. THE KILGORE'S ADDITION PLAT SHOWS A NUMBER OF MONUMENTS BEING SET AND PLAT MEASUREMENTS AND MONUMENTATION EXTENDING INTO McARTHUR'S ADDITION TO THE CENTERLINE OF BROAD STREET. MONUMENTS RECOVERED FROM THE KILGORE'S ADDITION PLAT WERE USED AS CONTROL IN ESTABLISHING THE CORNERS OF LOTS 1 AND 2, BLOCK 10, AS SHOWN. ALL MONUMENTS FROM THE KILGORE'S ADDITION PLAT WERE SEARCHED AND THOSE FOUND ARE NOTED. REFER TO SURVEY NO. 98-058-B AND PARTITION PLAT NO. 2002-40 FOR ADDITIONAL SURVEY CONTROL DATA.

THIS SURVEY WAS MADE WITH A 2 PERSON CREW USING A LEITZ SET 3B NE SECOND TOTAL STATION. MEASUREMENTS WERE MADE BY A COMBINATION OF CLOSED TRAVERSES AND RADIAL TIES. MONUMENTS WERE ESTABLISHED BY RADIAL METHODS AND VERIFIED BY CHECK OBSERVATIONS TO SEPARATE BACK SIGHTS.

RECEIVED BY  
 Umatilla County Surveyors  
 Date 3-03  
 Rec'd By KK  
 No. D3-48-B

REGISTERED  
 PROFESSIONAL  
 LAND SURVEYOR  
  
*William R. Wells*  
 OREGON  
 JULY 22, 1977  
 WILLIAM R. WELLS  
 1106  
 RENEWS 6/30/04

WILLIAM R. WELLS, PLS  
 2602 N.E. RIVERSIDE PLACE  
 P.O. BOX 1696  
 PENDLETON, OR 97801  
 PHONE: (541) 276-6362

DATE: 02/03	DR. BY: WRW
CK. BY: WRW	NO: 03-853

PROJECT:  
 SURVEY FOR:  
**GREG STEEN**  
 LOTS 1 & 2, BLOCK 10,  
 McARTHUR'S ADDITION  
 TO THE CITY OF WESTON.  
 LOCATED IN THE SOUTHEAST  
 QUARTER OF SECTION 22,  
 T4N, R35E., W.M.,  
 UMATILLA COUNTY, OREGON.

J. STEEN