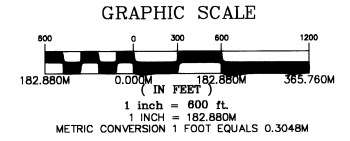
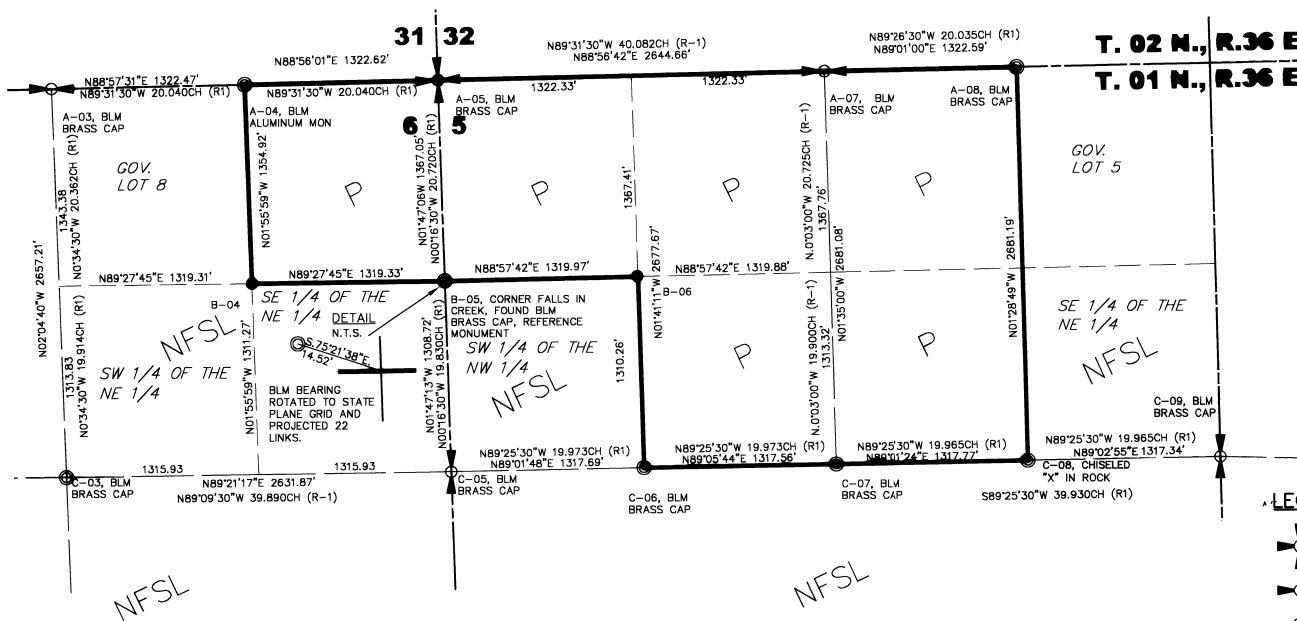


RECORD OF SURVEY

LOCATED IN SECTIONS 4, 5, 6 AND 9, T. 1 N., R. 36 E., WILLAMETTE MERIDIAN
UMATILLA COUNTY, OREGON.



SURVEY NARRATIVE

OVERVIEW

THIS SURVEY WAS COMPLETED FOR THE UMATILLA NATIONAL FOREST UNDER CONTRACT 53-04R3-9-40A, TASK ORDER UMA-06, MP 244 CADASTRAL SURVEY, PRELIMINARY RECONNAISSANCE AND LAND OWNERS CONTACTS WERE MADE IN OCTOBER 2001. THE FIELD SURVEY STARTED IN APRIL 2002 AND WAS COMPLETED ON AUGUST 31, 2002.

CONTROLLING PLSS CORNERS OF THE BLM 2000 RESURVEY WERE CONVENTIONAL TRAVERSED OR TIED WITH RTK GPS METHODS. THE BEARING AND DISTANCES SHOWN ARE FOUND MEASUREMENTS BETWEEN MONUMENTS. THE SMALL DIFFERENCES FROM THE BLM 2000 PLAT WERE REVIEWED AND ARE REASONABLE CONSIDERING THE VERTICAL RELIEF (2,200 TO 3,600 FEET) AND DIFFICULT SURVEY CONDITIONS. SUBDIVISION OF THE 1/4 SECTIONS ARE CALCULATED USING APPROPRIATE 1973 BLM SUBDIVISION METHODS.

FOUND DISTANCE ARE GRID STATE PLANE DISTANCES. THE COMBINED FACTOR (GRID AND SCALE) FOR THIS PROJECT USING A MEAN ELEVATION OF 2800' IS 0.99978. MULTIPLY FOUND DISTANCE BY 1.00022 TO OBTAIN A GROUND DISTANCE. RECORD DISTANCES ARE GROUND.

HISTORY OF SURVEYS

THE EXTERIOR AND SUBDIVISION OF TOWNSHIP 1 NORTH, RANGE 36 EAST WAS CONDUCTED BY HERMAN D. GRADON UNDER CONTRACT 452. THE SURVEY WAS ACCEPTED ON MARCH 31, 1863.

USFS RECORDS LIST SEVERAL "52" CORNER RECORD CARDS ON FILE WITH DATES IN 1929, 1941, 1979, 1982, 2000, AND 2001.

THE BUREAU OF LAND MANAGEMENT REMONUMENTED CERTAIN ORIGINAL CORNER POINTS IN THIS TOWNSHIP BY CADASTRAL SURVEYOR A. JOSEPH GARRISON IN 1982. CORNERS INCLUDED THE QUARTER BETWEEN 4/9 AND QUARTER 9/16.

THE BUREAU OF LAND MANAGEMENT BETWEEN MAY 1997 AND OCTOBER 1999 CONDUCTED A CORRECTIVE DEPENDENT RESURVEY OF THE MILE BETWEEN SECTIONS 34 AND 35, THE DEPENDENT RESURVEY OF PORTIONS OF THE EAST, WEST, AND NORTH BOUNDARIES AND SUBDIVISIONAL LINES, THE SUBDIVISIONS OF 4, 5, 6, 9, 15, 16, 21, 22, 25, 26, 27, AND 34, AND THE METES-AND-BOUNDS SURVEY OF PORTIONS OF THE WESTERLY RIGHT-OF-WAY OF THE UNION PACIFIC RAILROAD IN SECTIONS 27, 34, AND 35. THE SURVEYS WERE EXECUTED BY CADASTRAL SURVEYORS RICHARD KAISER, PHILIP GRIFFIN AND BRYAN SEIBOLD. THE CADASTRAL PLAT WAS ACCEPTED MARCH 17, 2000.

THE BUREAU OF LAND MANAGEMENT NOTIFIED THE UMATILLA NATIONAL FOREST IN AUGUST OF 1998 ABOUT THE ENCROACHMENTS NEAR THE CORNER OF SECTIONS 4, 5, 8, AND 9.

THE BUREAU OF LAND MANAGEMENT WAS NOTIFIED IN NOVEMBER OF 2000 BY THE UMATILLA NATIONAL FOREST OF THE ORIGINAL CORNERS FOUND AT THE BLM PROPORTIONED CORNERS. THIS NOTIFICATION PERTAINS TO SECTIONS SOUTH OF THIS PROJECT SITE. BLM CADASTRAL SURVEYOR RICHARD KAISER CONDUCTED A CORRECTION SURVEY DURING APRIL AND MAY OF 2001, AND THE CORRECTION PLAT WAS ACCEPTED JUNE 21, 2002.

EQUIPMENT AND PROCEDURES

CONTROLLING PLSS CORNERS WERE TIED USING RTK GPS METHODS AS DESCRIBED IN "STANDARDS AND GUIDELINES FOR CADASTRAL SURVEYS, USING GLOBAL POSITIONING SYSTEM METHODS" MAY 9, 2001, VERSION 1.0. GPS EQUIPMENT USED WERE TRIMBLE 4800 RTK GPS CAPABLE (DUAL FREQUENCY) RECEIVERS. SUPPLEMENTAL CONVENTIONAL TRAVERSE WERE MADE WITH A TOPCON GTS-302 (3-SECOND TOTAL STATION). INDIVIDUAL TRAVERSE REVIEW AND ADJUSTMENTS WERE MADE WITH A RIGOROUS LEAST SQUARES ADJUSTMENT (STAR-NET V5.041). INTERMEDIATE POSTING POINTS WERE ESTABLISHED WITH SINGLE MEASUREMENT RTK GPS OR RADIAL TECHNIQUE WITH CONVENTIONAL EQUIPMENT.

SURVEYOR'S CERTIFICATION

I, MICHAEL P. LEJEUNE, A PROFESSIONAL LAND SURVEYOR IN THE STATE OF OREGON, HEREBY CERTIFY THAT THIS PLAT AND NOTES HEREON OR ARE ATTACHED ARE A TRUE AND CORRECT REPRESENTATION OF THE SURVEY MADE BETWEEN OCTOBER 2001 AND AUGUST 31, 2002, AT THE REQUEST OF THE U.S. FOREST SERVICE IN THE ACCORDANCE WITH THE STATUTES OF THE STATE OF OREGON AND WITH THE ARTICLES OF MY CONTRACT. LOCATED IN SECTIONS 4, 5, 6, AND 9, TOWNSHIP 1 NORTH, RANGE 36 EAST, WILLAMETTE MERIDIAN, UMATILLA COUNTY, OREGON.

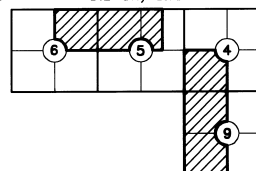
REGISTERED PROFESSIONAL LAND SURVEYOR

Michael P. Lejeune
11/06/02

OREGON
JAN. 21, 1992
MICHAEL P. LEJEUNE
2535

EXPIRES DEC. 31, 2002

SURVEY INDEX



LEGEND



FOUND SECTION CORNER AS NOTED, SEE ADDITIONAL INFORMATION ON CERTIFIED RECORD OF LAND CORNER MONUMENTATION.



FOUND 1/4 SECTION CORNER AS NOTED, SEE ADDITIONAL INFORMATION ON CERTIFIED RECORD OF LAND CORNER MONUMENTATION.



FOUND MONUMENT AS NOTED, SEE ADDITIONAL INFORMATION ON CERTIFIED RECORD OF LAND CORNER MONUMENTATION AND/OR BLM 2000 FIELD NOTES.



SET 3-1/4" ALUMINUM CAP ON 2-1/2" ALUMINUM PIPE, PLS 2535, SEE ADDITIONAL INFORMATION ON CERTIFIED RECORD OF LAND CORNER MONUMENTATION.



RECORD, BLM, CORRECTIVE DEPENDENT RESURVEY, DEPENDENT RESURVEY, SUBDIVISION OF SECTIONS AND SURVEY, ACCEPTED MARCH 17, 2000

NFSL

NATIONAL FOREST SERVICE OWNERSHIP



PRIVATE OWNERSHIP



CHAINS (1 CHAIN = 66.0 FEET)



INDEX GEOCODE (TYPICAL)



NATIONAL FOREST BOUNDARY POSTED WITH LIGHT WEIGHT GALVANIZED METAL POST AND WIRED ON PROPERTY BOUNDARY SIGNS

U.S. FOREST SERVICE APPROVAL

EXAMINED AND ACCEPTED FOR THE U.S. FOREST SERVICE THIS 6th DAY OF NOVEMBER, 2002

David A. Schlein C.O.R.

I CERTIFY THAT THIS SURVEY WAS PERFORMED AT THE REQUEST OF THE UMATILLA NATIONAL FOREST.

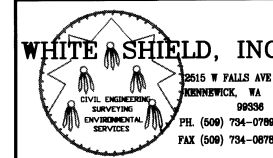
NATIONAL FOREST SUPERVISOR

John J. Blackwood 11/6/02
SIGNATURE DATE

Umatilla County Surveyor
Date 11-02
Rec'd By KE
No. 02-223-B

RECORD OF SURVEY

UMATILLA NATIONAL FOREST
MP 244 CADASTRAL SURVEY
SECTIONS 4, 5, 6, AND 9
T. 1 N., R. 36 E., W.M.
UMATILLA COUNTY, OREGON

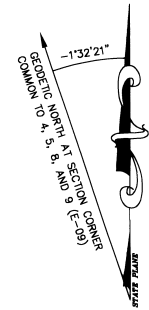
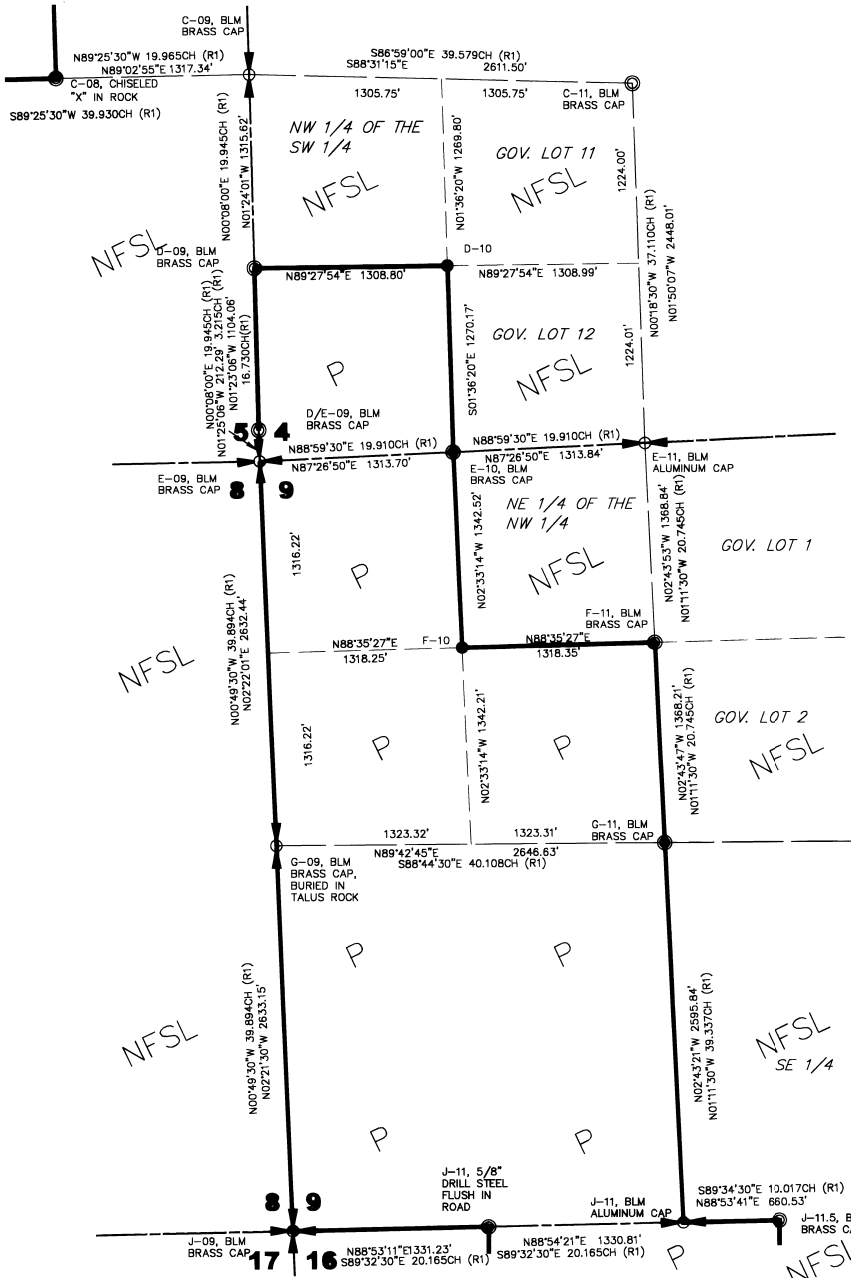


SCALE: H: 1"=600' JOB # 199-076-04
K: N/A 076-04_BASE 1/2

SURVEY BY: CH/SP DRAWN BY: JDD/MPL CHECKED BY: RWP/MPL DATE: OCTOBER 29, 2002

RECORD OF SURVEY

LOCATED IN SECTIONS 4, 5, 6, AND 9, TOWNSHIP 1 NORTH., RANGE 36 EAST, WILLAMETTE MERIDIAN,
UMATILLA COUNTY, OREGON.

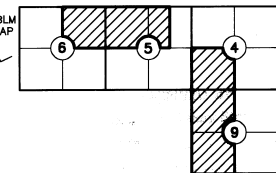


LEGEND

- FOUND SECTION CORNER AS NOTED, SEE ADDITIONAL INFORMATION ON CERTIFIED RECORD OF LAND CORNER MONUMENTATION.
- FOUND 1/4 SECTION CORNER AS NOTED, SEE ADDITIONAL INFORMATION ON CERTIFIED RECORD OF LAND CORNER MONUMENTATION.
- FOUND MONUMENT AS NOTED, SEE ADDITIONAL INFORMATION ON CERTIFIED RECORD OF LAND CORNER MONUMENTATION AND/OR BLM 2000 FIELD NOTES.
- SET 3-1/4" ALUMINUM CAP ON 2-1/2" ALUMINUM PIPE, PLS 2535, SEE ADDITIONAL INFORMATION ON CERTIFIED RECORD OF LAND CORNER MONUMENTATION.
- RECORD, BLM, CORRECTIVE DEPENDENT RESURVEY, DEPENDENT RESURVEY, SUBDIVISION OF SECTIONS AND SURVEY, ACCEPTED MARCH 17, 2000
- NATIONAL FOREST SERVICE OWNERSHIP
- PRIVATE OWNERSHIP
- CHAINS (1 CHAIN = 66.0 FEET)
- INDEX GEOCODE (TYPICAL)
- NATIONAL FOREST BOUNDARY POSTED WITH LIGHT WEIGHT GALVANIZED METAL POST AND WIRED ON PROPERTY BOUNDARY SIGNS

REGISTERED PROFESSIONAL LAND SURVEYOR
Michael P. Lafont
OREGON
JAN. 21, 1992
MICHAEL P. LAFont
2535
EXPIRES DEC. 31, 2002
11/06/02

SURVEY INDEX
T.1 N., R.36 E.



WHITE SHIELD, INC
2615 W FALLS AVE
BURNINGWATER, WA 98588
CIVIL ENGINEERING SURVEYING ENVIRONMENTAL SERVICES
PH. (509) 734-0789
FAX (509) 734-0878

RECORD OF SURVEY
UMATILLA NATIONAL FOREST
MP 244 CADASTRAL SURVEY
SECTIONS 4, 5, 6, AND 9
T. 1 N., R. 36 E., W.M.
UMATILLA COUNTY, OREGON

SCALE: 1"=600'
JOB # 199-076-04
DATE: OCTOBER 29, 2002