

W. 1/2 SEC. 20 T.4 N. R.35 E. W. M.

NARRATIVE

THE PURPOSE OF THIS NARRATIVE IS TO SHOW HOW THE NEW RIGHT-OF-WAY POINTS FOR THE JCT. OREGON-WASHINGTON - ATHENA HOLDMAN HWY SEC. PROJECT WERE SET. THE SURVEY CREW PERFORMING THE WORK CONSISTED OF BRENT REYNOLDS, AND TOM HUEBNER. THE PROJECT IS IN T. 4 N. R. 35 E.

TO SET THE MONUMENTS WE USED THE EXISTING NETWORK FROM THE PREVIOUS ODOT SURVEY FILED WITH THE COUNTY AS 00177-B. THAT SURVEY USED TWO MONUMENTS FOR THE BASIS OF BEARING. POINT NUMBER 19, A 2 1/2-INCH BRASS CAP SET IN THE ROADWAY OF ATHENA-HOLDMAN HIGHWAY, WAS THE 1/4 CORNER BETWEEN SECTIONS 19 AND 20. POINT NUMBER 50, A 1 1/2-INCH IRON PIPE WITH PLASTIC CAP MARKED "OR2166LS", WAS THE SECTION CORNER 17, 18, 19, AND 20. THE BEARING WAS THE RECORD DISTANCE CONVERTED TO METRIC BY MULTIPLYING BY .3048 (814.569 M) WITH A RECORD BEARING OF N 2°01'58" E, OBTAINED FROM PLAT # 97-141-C AT UMATILLA COUNTY SURVEYORS OFFICE, SURVEY PERFORMED BY WILLIAM R. WELLS. COORDINATES WERE ASSUMED. ALSO INCLUDED IN THE ORIGINAL NETWORK WERE POINTS 11 (A TRIANGULATION STATION DISK) AND POINTS 100, 101, AND 102 (3/8" IRON REBAR WITH ALUMINUM CAPS).

THE SET MONUMENTS ON THIS SURVEY WERE 16 mm X 900 mm IRON RODS WITH ALUMINUM CAPS MARKED "OREG. STATE HWY. DIV.", MARKED WITH POSTS AND PLACARDS. THEY WERE SET BY STATION AND OFFSET. THE STATIONING AND ALIGNMENT WAS OBTAINED FROM ODOT R/W MAP 9B-25-18. THE SET POINTS WERE VERIFIED BY DOUBLE TIES. ALL MONUMENTS ARE SET WITHIN ODOT STANDARDS.

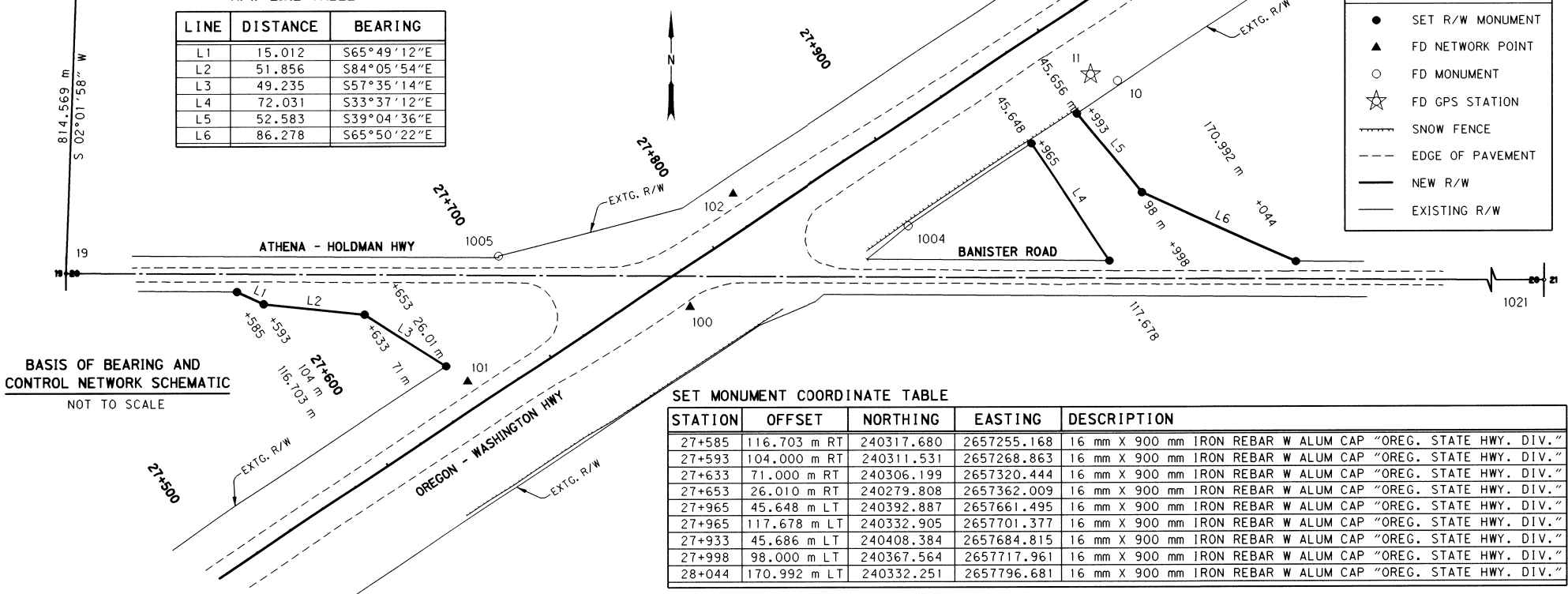
THE EQUIPMENT USED ON THIS PROJECT WAS A TCA 1800 (98-TS10), AND A LEICA LEVEL NA2002.

EXISTING COUNTY RIGHT-OF-WAY ON BANISTER ROAD IS TO BE RESOLVED BY THE COUNTY.

R/W LINE TABLE

LINE	DISTANCE	BEARING
L1	15.012	S65°49'12"E
L2	51.856	S84°05'54"E
L3	49.235	S57°35'14"E
L4	72.031	S33°37'12"E
L5	52.583	S39°04'36"E
L6	86.278	S65°50'22"E

LEGEND	
●	SET R/W MONUMENT
▲	FD NETWORK POINT
○	FD MONUMENT
☆	FD GPS STATION
---	SNOW FENCE
- - -	EDGE OF PAVEMENT
—	NEW R/W
- - -	EXISTING R/W



BASIS OF BEARING AND CONTROL NETWORK SCHEMATIC
NOT TO SCALE

SET MONUMENT COORDINATE TABLE

STATION	OFFSET	NORTHING	EASTING	DESCRIPTION
27+585	116.703 m RT	240317.680	2657255.168	16 mm X 900 mm IRON REBAR W ALUM CAP "OREG. STATE HWY. DIV."
27+593	104.000 m RT	240311.531	2657268.863	16 mm X 900 mm IRON REBAR W ALUM CAP "OREG. STATE HWY. DIV."
27+633	71.000 m RT	240306.199	2657320.444	16 mm X 900 mm IRON REBAR W ALUM CAP "OREG. STATE HWY. DIV."
27+653	26.010 m RT	240279.808	2657362.009	16 mm X 900 mm IRON REBAR W ALUM CAP "OREG. STATE HWY. DIV."
27+965	45.648 m LT	240392.887	2657661.495	16 mm X 900 mm IRON REBAR W ALUM CAP "OREG. STATE HWY. DIV."
27+965	117.678 m LT	240332.905	2657701.377	16 mm X 900 mm IRON REBAR W ALUM CAP "OREG. STATE HWY. DIV."
27+933	45.686 m LT	240408.384	2657684.815	16 mm X 900 mm IRON REBAR W ALUM CAP "OREG. STATE HWY. DIV."
27+998	98.000 m LT	240367.564	2657717.961	16 mm X 900 mm IRON REBAR W ALUM CAP "OREG. STATE HWY. DIV."
28+044	170.992 m LT	240332.251	2657796.681	16 mm X 900 mm IRON REBAR W ALUM CAP "OREG. STATE HWY. DIV."

RECOVERED MONUMENT COORDINATE TABLE

PT ID	NORTHING	EASTING	DESCRIPTION
10	10097.574	50537.746	REFERENCE MARKER FOR PT 11 MARKED ATHENA RM 1
11	10100.877	50523.930	TRIANGULAR STATION DISK MARKED ATHENA
19	10000.000	50000.000	2 1/2 IN BRASS DISK, 1/4 CORNER BETWEEN SECTIONS 19 AND 20
50	10814.056	50028.894	1 1/2 IN IRON PIPE W PLASTIC CAP, OR2166LS, SECTION CORNER 17 18 19 20
100	9982.252	50318.789	30 IN X 3/8 IN IRON REBAR WITH 1 1/2 IN ALUM CAP MARKED OSHD NET PT 100
101	9944.347	50205.142	30 IN X 5/8 IN IRON REBAR WITH 1 1/2 IN ALUM CAP MARKED OSHD NET PT 101
102	10039.862	50340.659	30 IN X 5/8 IN IRON REBAR WITH 1 1/2 IN ALUM CAP MARKED OSHD NET PT 102
1004	10023.542	50430.605	12 mm R/W IRON PIN LOCATED IN THE NE CORNER OF INTERSECTION
1005	10008.559	50220.891	5/8 IN IRON REBAR WITH NO CAP LOCATED IN THE NW CORNER OF INTERSECTION
1021	9989.202	51572.983	2 1/2 IN BRASS 1/4 CORNER BETWEEN SECTION 20 AND 21



REGISTERED PROFESSIONAL LAND SURVEYOR

K.W. Eddy
OREGON
FEBRUARY 14, 1985
KEN W. EDDY
2129

EXPIRES 12/31/01

OREGON DEPARTMENT OF TRANSPORTATION

RIGHT-OF-WAY MONUMENTATION MAP

ORE-WA / ATHENA HOLDMAN HWY

JUNCTION OREGON-WASHINGTON HWY AND ATHENA HOLDMAN HWY

UMATILLA COUNTY

FOR O.D.O.T. REGION 5 RECEIVED 80788 KIK ROAD, HERMISTON, OR. 97838

JULY 27, 2001

SHEET 1 OF 1

Umatilla County Surveyor

10-91

21

01-161-B