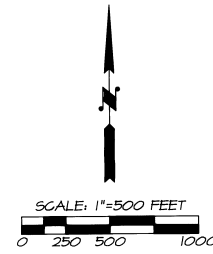
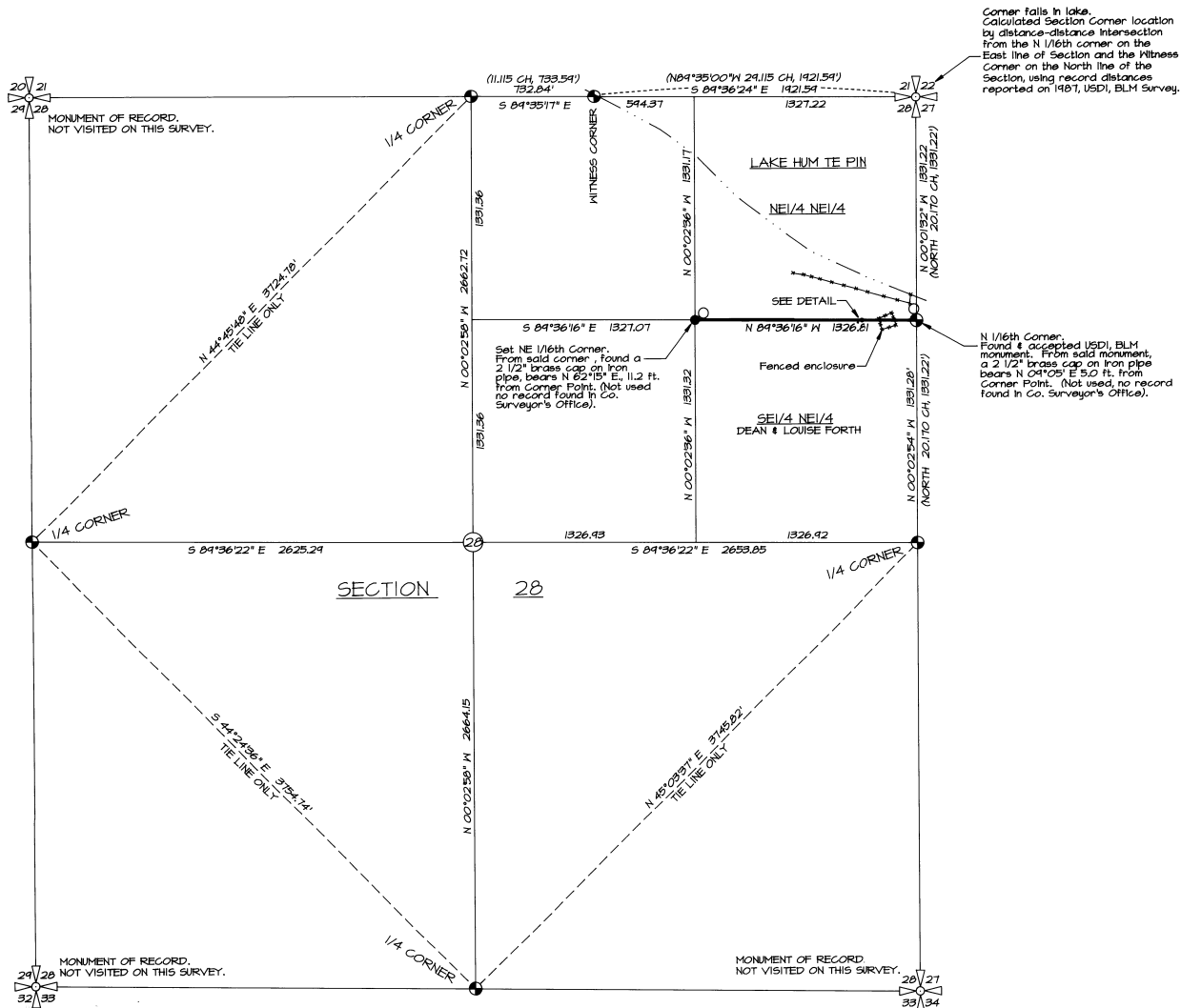


# RECORD OF SURVEY

MAY, 1998



"BASIS OF BEARINGS" BEARINGS ARE BASED ON GPS GEODETIC OBSERVATION TAKEN 100 FEET WEST OF THE NORTH 1/4 CORNER OF SECTION 28. DRAWING BEARINGS WERE ROTATED TO TRUE NORTH ABOUT SAID POINT.

### LEGEND

- - SET 5/8" X 30" IRON PIN WITH 2" ALUMINUM CAP MARKED "NE 1/16 S 28 PLS 1106 1998".
- ⊙ - FOUND BRASS CAP ON 2 1/2" STAINLESS STEEL PIPE FROM DEPENDENT RESURVEY BY USD, BLM, MADE BETWEEN JULY, 1987 & JUNE, 1989. (SURVEY RECORDED IN COUNTY SURVEYOR'S OFFICE).
- - FOUND MONUMENT AS NOTED.
- (XOX) - RECORDED DIMENSION FROM DEPENDENT RESURVEY BY USD, BLM, MADE BETWEEN JULY, 1987 & JUNE, 1989. (SURVEY RECORDED IN COUNTY SURVEYOR'S OFFICE).
- X---X--- - EXISTING FENCELINE.

### NOTES:

1. SOUTH LINE OF NE 1/4 NE 1/4 WAS MARKED WITH STEEL FENCE POSTS PLACED 200 TO 250 FEET APART.
2. SOUTHEAST CORNER OF BUILDING IS LOCATED 16 FEET SOUTH OF SOUTH LINE OF NE 1/4 NE 1/4.

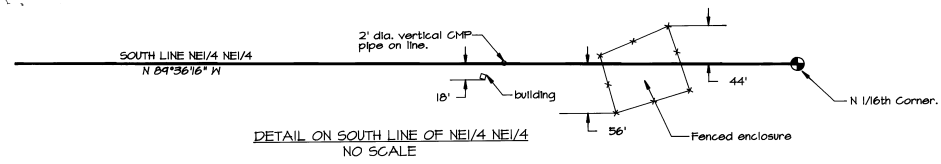
### NARRATIVE OF SURVEY

THIS SURVEY WAS MADE AT THE REQUEST OF THE BUREAU OF INDIAN AFFAIRS, TO LOCATE THE SOUTH LINE OF THE NORTHEAST QUARTER OF THE NORTHEAST QUARTER OF SECTION 28, TOWNSHIP 2 SOUTH, RANGE 34 EAST, 14M.

TRAVERSE MEASUREMENTS WERE MADE WITH A LEITZ SET 3 B ONE SECOND TOTAL STATION BY A COMBINATION OF CLOSED CONTROL, TRAVERSE AND RADIAL TIES. CORNER MONUMENTS TIED AND MONUMENTS ESTABLISHED BY RADIAL METHODS WERE VERIFIED BY SEPARATE OBSERVATIONS.

CONTROL POINTS NEAR THE WEST 1/4 CORNER, NORTH 1/4 CORNER, EAST 1/4 CORNER, SOUTH 1/4 CORNER, NORTH 1/16TH CORNER AND WITNESS CORNER WERE LOCATED BY STATIC GPS METHODS. CORNER MONUMENTS WERE TIED FROM THE GPS CONTROL POINTS BY TOTAL STATION MEASUREMENTS.

RECEIVED BY  
 Umatilla County Surveyor  
 Date 5-98  
 Rec'd By AK  
 No. 98-105-B



REGISTERED PROFESSIONAL LAND SURVEYOR  
*William R. Wells*  
 OREGON  
 JULY 22, 1977  
 WILLIAM R. WELLS  
 1106  
 RENEWS 6/30/98

WILLIAM R. WELLS, PLS  
 357 N.E. HWY. 11  
 P.O. BOX 1696  
 PENDLETON, OR 97801  
 PHONE: (541) 276-6362

DATE: 5/18/98 DR. BY: DMT  
 CK. BY: WRW NO: 48-521

PROJECT:  
 BOUNDARY SURVEY FOR:  
 BUREAU OF INDIAN AFFAIRS

LOCATED IN SECTION 28, TOWNSHIP 2 SOUTH, RANGE 34 EAST, 14M, UMATILLA COUNTY, OREGON.