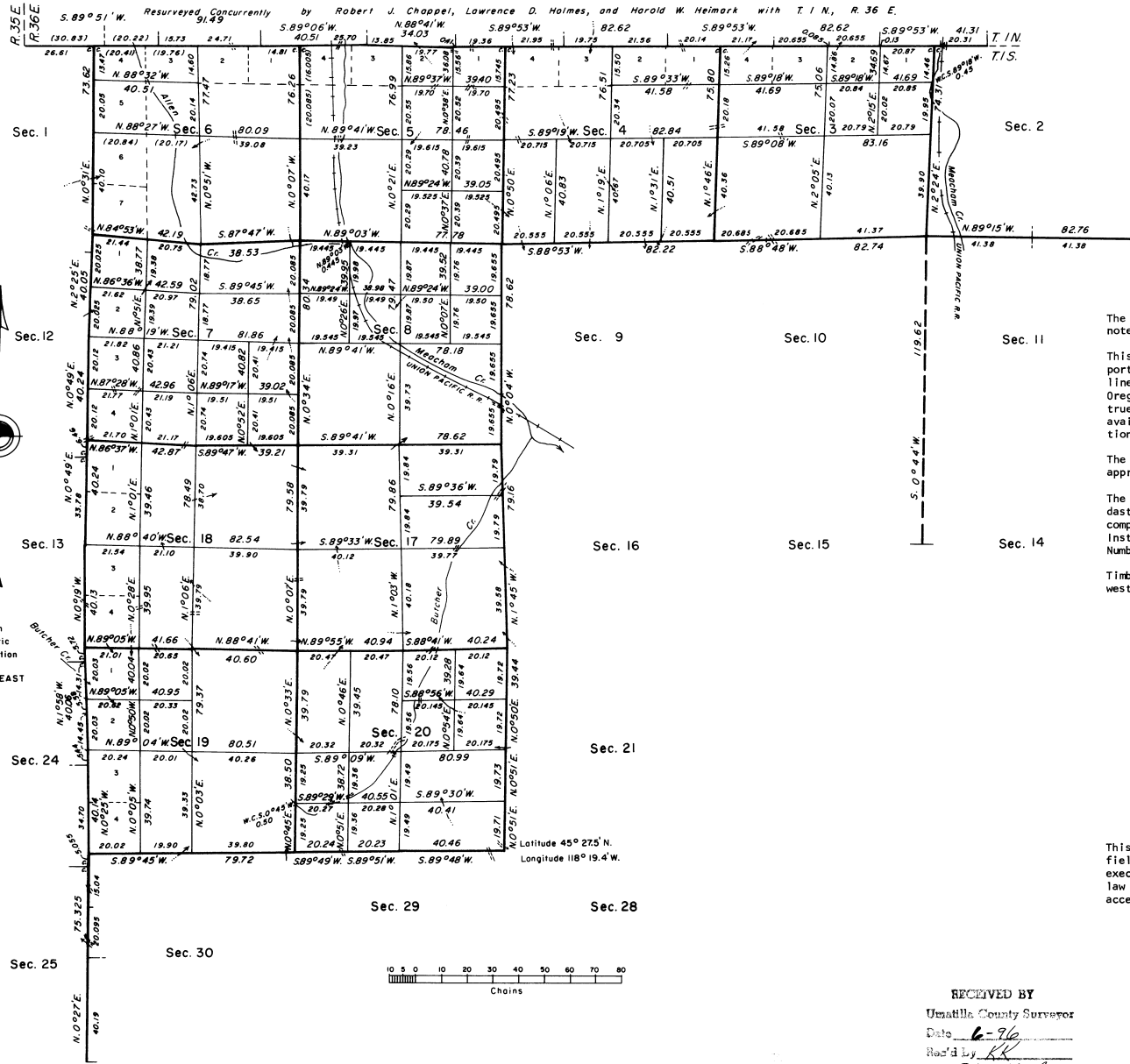


TOWNSHIP 1 SOUTH, RANGE 36 EAST, OF THE WILLAMETTE MERIDIAN, OREGON

DEPENDENT RESURVEY AND SUBDIVISION OF SECTIONS

Sec. 31 Sec. 32 Sec. 33 Sec. 34 Sec. 35
WILLAMETTE **BASE** **LINE**



The history of surveys is contained in the field notes.

This plat represents a dependent resurvey of a portion of the west boundary and subdivisional lines, T. 1 S., R. 36 E., Willamette Meridian, Oregon, designed to restore the corners in their true original locations according to the best available evidence, and the subdivision of sections 3, 4, 5, 6, 7, 8, 17, 18, 19, and 20.

The lottings and areas are as shown on the plat approved March 31, 1883.

The survey was executed by Lawrence D. Holmes, Cadastral Surveyor, beginning October 17, 1983, and completed May 23, 1985, pursuant to Special Instructions dated September 22, 1983, under Group Number 1184, Oregon.

Timber in this area consists of pine, fir, and western larch.

UNITED STATES DEPARTMENT OF THE INTERIOR
BUREAU OF LAND MANAGEMENT
Portland, Oregon July 2, 1987

This plat is strictly conformable to the approved field notes, and the survey, having been correctly executed in accordance with the requirements of law and the regulations of this Bureau, is hereby accepted.

For the Director

William W. Hlawn
Chief Cadastral Surveyor of Oregon

RECEIVED BY
Umatilla County Surveyor
Date 6-96
Rec'd by KK
No. 96-1026

"Suspended, May 8, 1996, see file 9632 (OR 957)"