

LEGEND

- SECTION CORNER, FOUND ORIGINAL EVIDENCE AND REMONUMENTED W/ 1/2" GALV. IRON PIPE W/ 2 1/2" BRASS CAP. CORNER RECORD FILED SEPARATELY.
- QUARTER SECTION CORNER, FOUND ORIGINAL EVIDENCE AND REMONUMENTED W/ 1/2" GALV. IRON PIPE W/ 2 1/2" BRASS CAP. CORNER RECORD FILED SEPARATELY.
- OTHER MONUMENT FOUND AS NOTED.
- ESTABLISHED OR RE-ESTABLISHED QUARTER SECTION OR SIXTEENTH CORNER. SET 5/8" BY 30" IRON PIN WITH 1/2" ALUMINUM CAP MARKED ORLS 1634. CORNER RECORD FILED SEPARATELY FOR QUARTER CORNER.
- (XOX) RI GLO RECORD BY CURRIN & NOLAND UNDER SPECIAL CONTRACT DATED MAY 4, 1887.
- BOUNDARY LINE "POSTED" WITH STEEL FENCE POSTS.

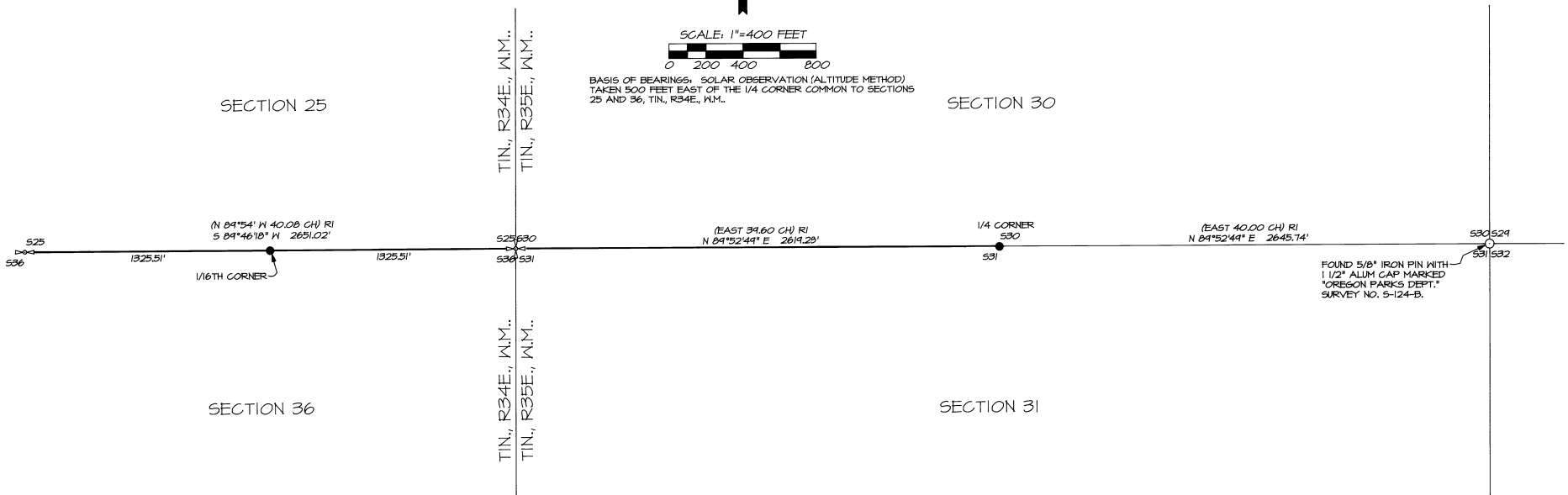
NARRATIVE OF SURVEY

THIS SURVEY WAS MADE FOR THE PURPOSE OF MONUMENTING AND POSTING THE SOUTH LINE OF SECTION 25, T1N., R34E., W.M., AND THE SOUTH LINE OF SECTION 30, T1N., R35E., W.M., BETWEEN THE SOUTH QUARTER CORNER OF SECTION 25 AND THE SOUTH QUARTER CORNER OF SECTION 30.

ACCEPTABLE EVIDENCE OF ALL NECESSARY CORNERS EXCEPT THE SOUTH QUARTER CORNER OF SECTION 30, T1N., R35E., W.M., WAS RECOVERED. THE SOUTH QUARTER CORNER OF SECTION 30 WAS DECLARED LOST AFTER DILIGENT SEARCH AND WAS RE-ESTABLISHED BY SINGLE PROPORTION MEASUREMENT USING THE CURRIN AND NOLAND RECORD BETWEEN THE RECOVERED SOUTHWEST AND SOUTHEAST CORNERS OF SECTION 30.

SURVEY MEASUREMENTS WERE MADE WITH A LEITZ SET 3B ONE SECOND TOTAL STATION BY A COMBINATION OF CLOSED CONTROL TRAVERSE AND RADIAL TIES. CORNER MONUMENTS TIED AND MONUMENTS ESTABLISHED BY RADIAL METHODS WERE VERIFIED BY SEPARATE OBSERVATIONS.

CORNER CERTIFICATES ARE FILED ON SEPARATE SHEETS FOR THE SOUTH QUARTER CORNER OF SECTION 25, T1N., R34E., W.M. AND THE SOUTHWEST CORNER AND SOUTH QUARTER CORNER OF SECTION 30, T1N., R35E., W.M.



FOUND 5/8" IRON PIN WITH 1 1/2" ALUM CAP MARKED "OREGON PARKS DEPT." SURVEY NO. S-124-B.

RECEIVED BY  
 Umatilla County Surveyor  
 Date: 10-95  
 By: KK  
 No. 95-167-B

WHEELH

REGISTERED PROFESSIONAL LAND SURVEYOR

*William L. Hanley*  
 OREGON  
 JULY 14 1978  
 WILLIAM L. HANLEY  
 1639  
 RENEWS 6/30/97

WILLIAM R. WELLS, PLS  
 357 N.E. HWY. 11  
 P.O. BOX 1696  
 PENDLETON, OR 97801  
 PHONE: (503) 276-6362

DATE: 8/31/95 DR. BY: WRW  
 CK. BY: WLH NO: 95-328

PROJECT:  
 SURVEY FOR:  
 JAY WHEELHOUSE  
 LOCATED IN SECTION 25, T1N., R34E., W.M., AND SECTION 30, T1N., R35E., W.M., UMATILLA COUNTY, OREGON.