

Center-East 1/16 corner.
Found aluminum monument set by Gregory T. Blackman, OPLS 991 in a survey made for the Umatilla National Forest, dated July, 1985.

East 1/4 corner Section 32.
Found brass cap monument set by Otis S. Gould, General Land Office Surveyor, Corner monumented in July, 1939.

Center 1/4 corner, section 32.
Found brass cap monument set by Donald L. Stappier in Dec. 1974. See Umatilla County Survey Number 1-156-B.

South 1/4 corner Section 32.
Found brass cap monument set by Otis S. Gould, General Land Office Surveyor, Corner monumented in July, 1939.

Southeast corner Section 32.
Found brass cap monument set by Otis S. Gould, General Land Office Surveyor, Corner monumented in July, 1939.

LANGDON LAKE

Situated in the Southeast quarter of section 32, Township 4 North, Range 38 East of the Willamett Meridian

BASIS OF BEARING

The North line of the Southeast quarter of Section 32 T 4 N, R 38 E of the Willamette Meridian. Said line bearing N 89°52'35"E, as recorded in Survey by Gregory T. Blackman, OPLS 991, dated July 1985.

SCALE: 1" = 200'

LEGEND

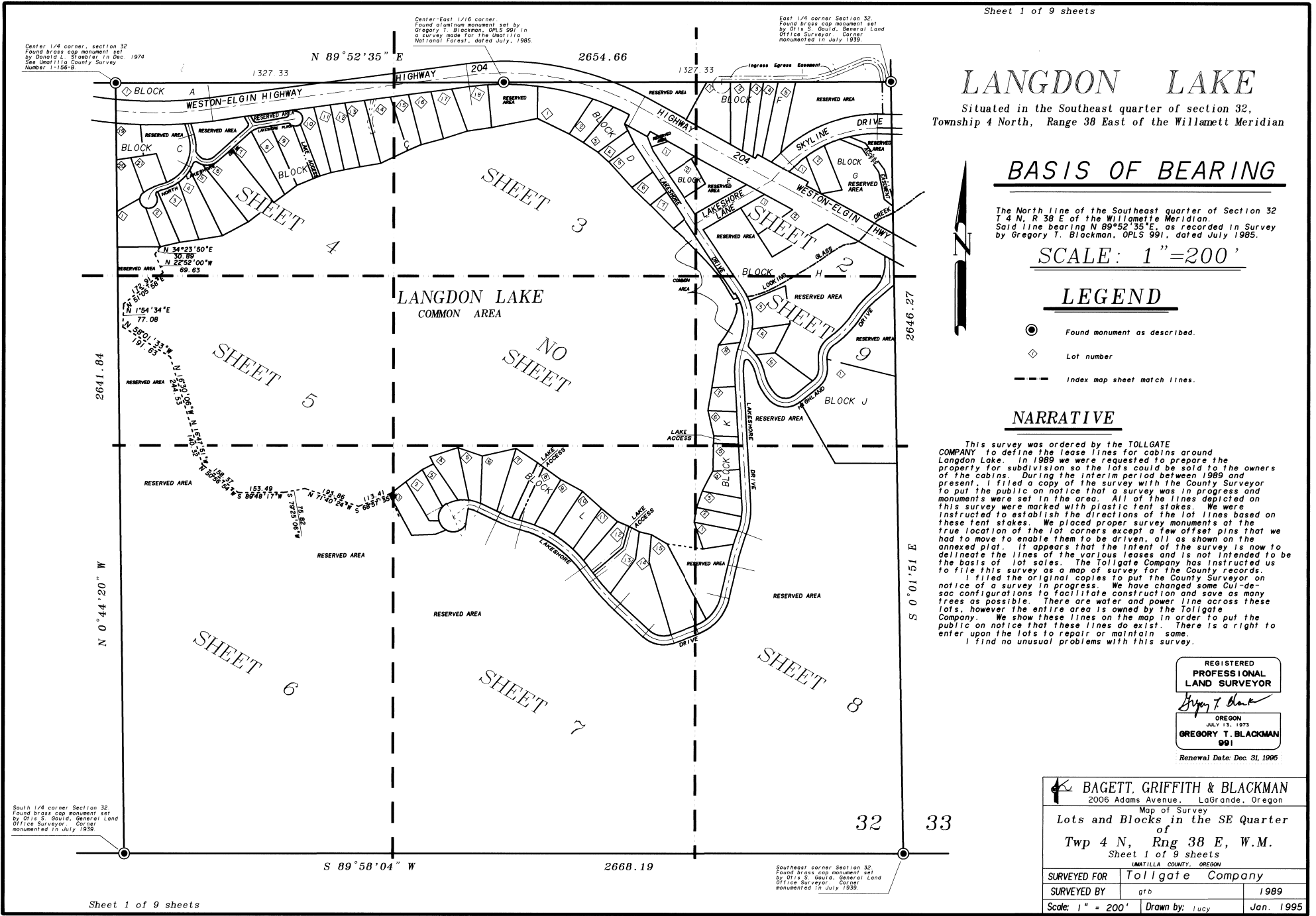
- Found monument as described.
- ◇ Lot number
- Index map sheet match lines.

NARRATIVE

This survey was ordered by the TOLLGATE COMPANY to define the lease lines for cabins around Langdon Lake. In 1989 we were requested to prepare the property for subdivision so the lots could be sold to the owners of the cabins. During the interim period between 1989 and present, I filed a copy of the survey with the County Surveyor to put the public on notice that a survey was in progress and monuments were set in the area. All of the lines depicted on this survey were marked with plastic tent stakes. We were instructed to establish the directions of the lot lines based on these tent stakes. We placed proper survey monuments at the true location of the lot corners except a few offset pins that we had to move to enable them to be driven, all as shown on the annexed plat. It appears that the intent of the survey is now to delineate the lines of the various leases and is not intended to be the basis of lot sales. The Tollgate Company has instructed us to file this survey as a map of survey for the County records. I filed the original copies to put the County Surveyor on notice of a survey in progress. We have changed some Cul-de-sac configurations to facilitate construction and save as many trees as possible. There are water and power line across these lots, however the entire area is owned by the Tollgate Company. We show these lines on the map in order to put the public on notice that these lines do exist. There is a right to enter upon the lots to repair or maintain same. I find no unusual problems with this survey.

REGISTERED
PROFESSIONAL
LAND SURVEYOR
Gregory T. Blackman
OREGON
JULY 13, 1973
GREGORY T. BLACKMAN
991
Renewal Date: Dec. 31, 1995

BAGETT, GRIFFITH & BLACKMAN 2006 Adams Avenue, LaGrande, Oregon		
Map of Survey Lots and Blocks in the SE Quarter of Twp 4 N, Rng 38 E, W.M. Sheet 1 of 9 sheets UMATILLA COUNTY, OREGON		
SURVEYED FOR	Tollgate Company	
SURVEYED BY	gfb	1989
Scale: 1" = 200'	Drawn by: Lucy	Jan. 1995



Sheet 2 of 9 sheets

East 1/4 corner Section 32
Found brass cap monument set
by Otis S. Gould, General Land
Office Surveyor, Corner
monumented in July 1939.

LANGDON LAKE

Sheet 2 of 9 sheets

BASIS OF BEARING

The North line of the Southeast quarter of Section 32
T 4 N, R 38 E of the Willamette Meridian.
Said line bearing N 89°52'35"E, as recorded in Survey
by Gregory T. Blackman, OPLS 991, dated July 1985.

SCALE: 1"=50'

CURVE DATA

① R = 462.00 Δ = 45°25'23" L = 366.26 T = 193.37 L.C. = 356.26 S 68°19'00"W	② R = 416.00 Δ = 45°25'23" L = 329.80 T = 174.11 L.C. = 356.26 S 68°19'00"W	③ R = 396.00 Δ = 45°25'23" L = 313.95 T = 165.74 L.C. = 305.79 S 68°19'00"W	④ R = 396.00 Δ = 7°47'33" L = 53.86 T = 26.97 L.C. = 53.83 S 49°30'05"W	⑤ R = 396.00 Δ = 10°32'13" L = 72.83 T = 36.52 L.C. = 72.72 S 58°40'04"W
⑥ R = 360.00 Δ = 8°21'17" L = 57.74 T = 28.92 L.C. = 57.69 S 68°06'49"W	⑦ R = 396.00 Δ = 4°50'16" L = 33.44 T = 48.28 L.C. = 33.42 S 74°42'35"W	⑧ R = 396.00 Δ = 13°54'04" L = 96.08 T = 48.94 L.C. = 95.94 S 84°04'47"W	⑨ R = 300.00 Δ = 22°48'33" L = 119.43 T = 60.51 L.C. = 118.64 N 78°28'19"E	⑩ R = 50.00 Δ = 103°55'13" L = 80.70 T = 63.92 L.C. = 78.76 S 60°58'01"E

LEGEND

- Found monument as described.
- Set 5/8" X 30" rebar with plastic cap marked "BGA SURVEY MARKER"
- Existing water line.
- Existing power line.
- Existing power pole.
- Center line streets and highway
- Easement line.
- ① Lot number.
- ② Curve number.

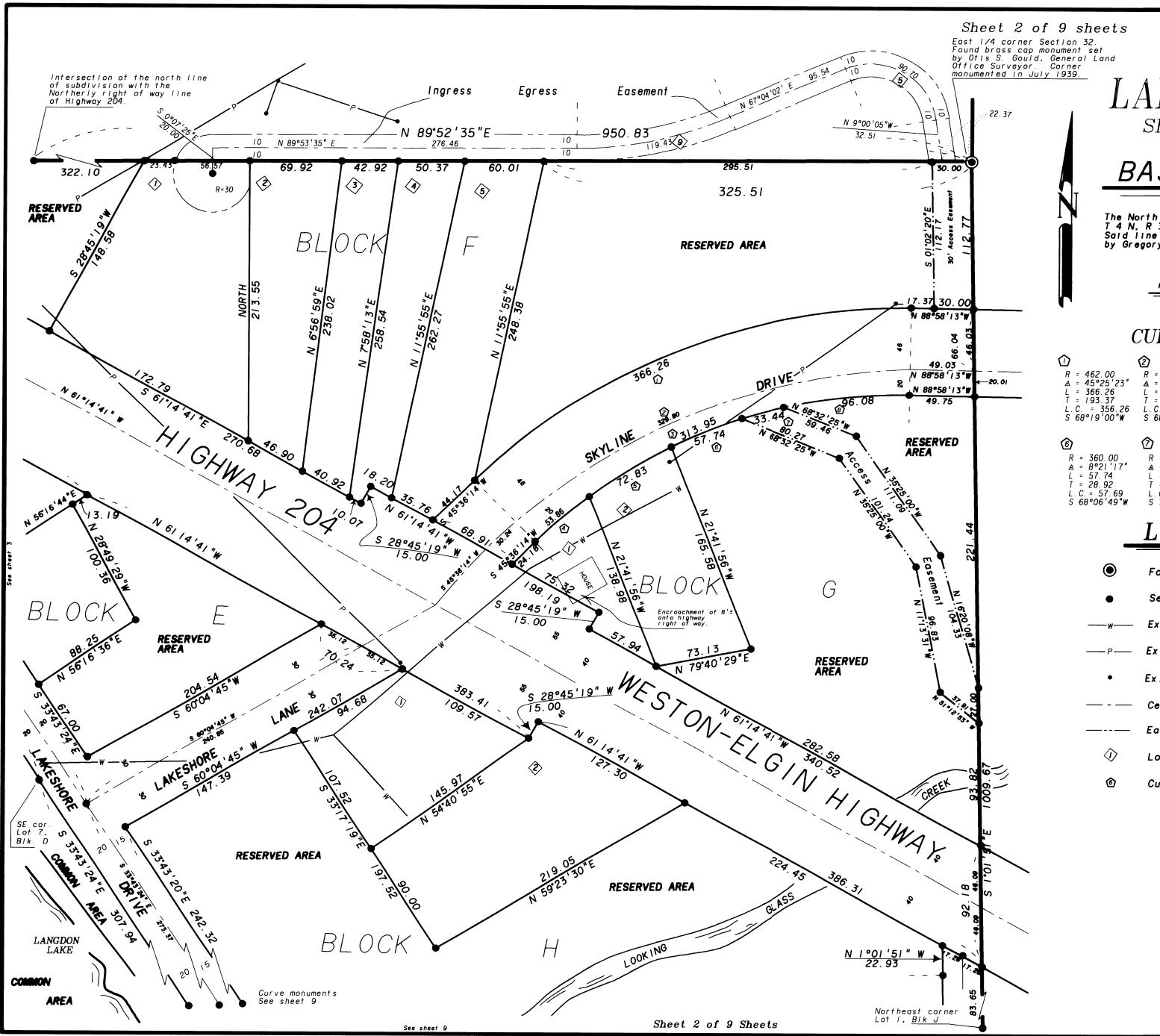
REGISTERED
PROFESSIONAL
LAND SURVEYOR

Gregory T. Blackman

OREGON
JULY 13, 1975
GREGORY T. BLACKMAN
991

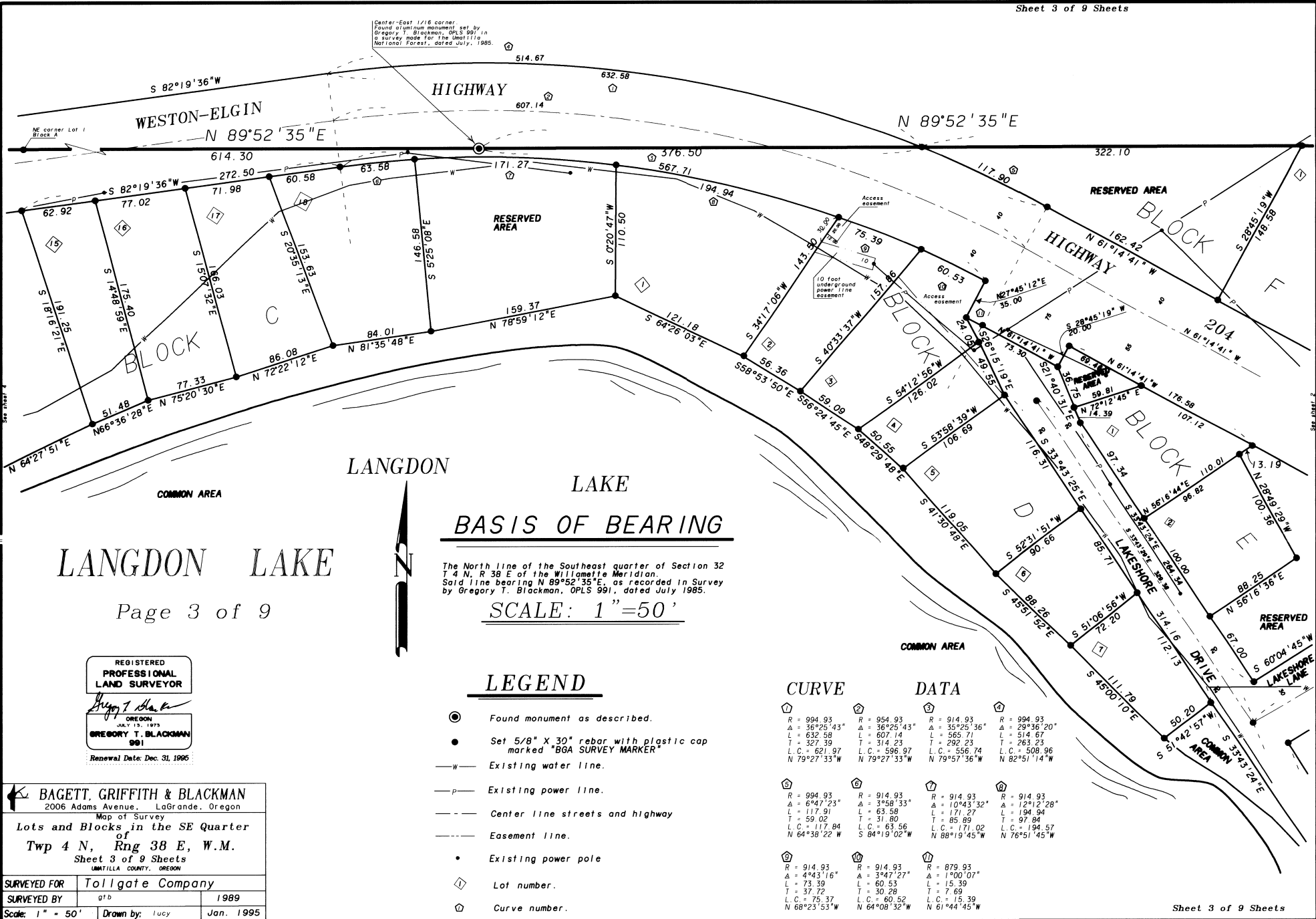
Renewal Date: Dec. 31, 1995

BAGETT, GRIFFITH & BLACKMAN 2006 Adams Avenue, LaGrande, Oregon		
Map of Survey		
Lots and Blocks in the SE Quarter of Twp 4 N, Rng 38 E, W.M.		
Sheet 2 of 9 Sheets UMATILLA COUNTY, OREGON		
SURVEYED FOR	Tollgate Company	
SURVEYED BY	gtb	1989
Scale: 1" = 50'	Drawn by: Lucy	Jan. 1995



Sheet 2 of 9 Sheets

MAP OF SURVEY 95-01-B



LANGDON LAKE

Page 3 of 9

BASIS OF BEARING

The North line of the Southeast quarter of Section 32 T 4 N, R 38 E of the Willamette Meridian. Said line bearing N 89°52'35"E, as recorded in Survey by Gregory T. Blackman, OPLS 991, dated July 1985.

SCALE: 1" = 50'

LEGEND

- Found monument as described.
- Set 5/8" X 30" rebar with plastic cap marked "BGA SURVEY MARKER"
- Existing water line.
- Existing power line.
- Center line streets and highway
- Easement line.
- Existing power pole
- ◇ Lot number.
- ⊙ Curve number.

CURVE DATA

① R = 994.93 Δ = 36°25'43" L = 632.58 T = 327.39 L.C. = 621.97 N 79°27'33"W	② R = 954.93 Δ = 36°25'43" L = 607.14 T = 314.23 L.C. = 596.97 N 79°27'33"W	③ R = 914.93 Δ = 35°25'36" L = 565.71 T = 292.23 L.C. = 556.74 N 79°57'36"W	④ R = 994.93 Δ = 29°36'20" L = 514.67 T = 263.23 L.C. = 508.96 N 82°51'14"W
⑤ R = 994.93 Δ = 6°47'23" L = 117.91 T = 59.02 L.C. = 117.84 N 64°38'22"W	⑥ R = 914.93 Δ = 3°58'33" L = 63.58 T = 31.80 L.C. = 63.56 S 94°19'02"W	⑦ R = 914.93 Δ = 10°43'32" L = 171.27 T = 85.89 L.C. = 171.02 N 88°19'45"W	⑧ R = 914.93 Δ = 29°36'20" L = 194.94 T = 97.84 L.C. = 194.57 N 76°51'45"W
⑨ R = 914.93 Δ = 4°43'16" L = 73.39 T = 37.72 L.C. = 75.37 N 68°23'53"W	⑩ R = 914.93 Δ = 3°47'27" L = 60.53 T = 30.28 L.C. = 60.52 N 64°08'32"W	⑪ R = 879.93 Δ = 1°00'07" L = 15.39 T = 7.69 L.C. = 15.39 N 61°44'45"W	

REGISTERED
PROFESSIONAL
LAND SURVEYOR

Gregory T. Blackman

OREGON
JULY 19, 1975
GREGORY T. BLACKMAN
991
Renewal Date: Dec. 31, 1995

BAGETT, GRIFFITH & BLACKMAN
2006 Adams Avenue, LaGrande, Oregon

Map of Survey
Lots and Blocks in the SE Quarter of Twp 4 N, Rng 38 E, W.M.
Sheet 3 of 9 Sheets
UMATILLA COUNTY, OREGON

SURVEYED FOR	Tollgate Company	
SURVEYED BY	gtb	1989
Scale: 1" = 50'	Drawn by: Lucy	Jan. 1995

CURVE DATA

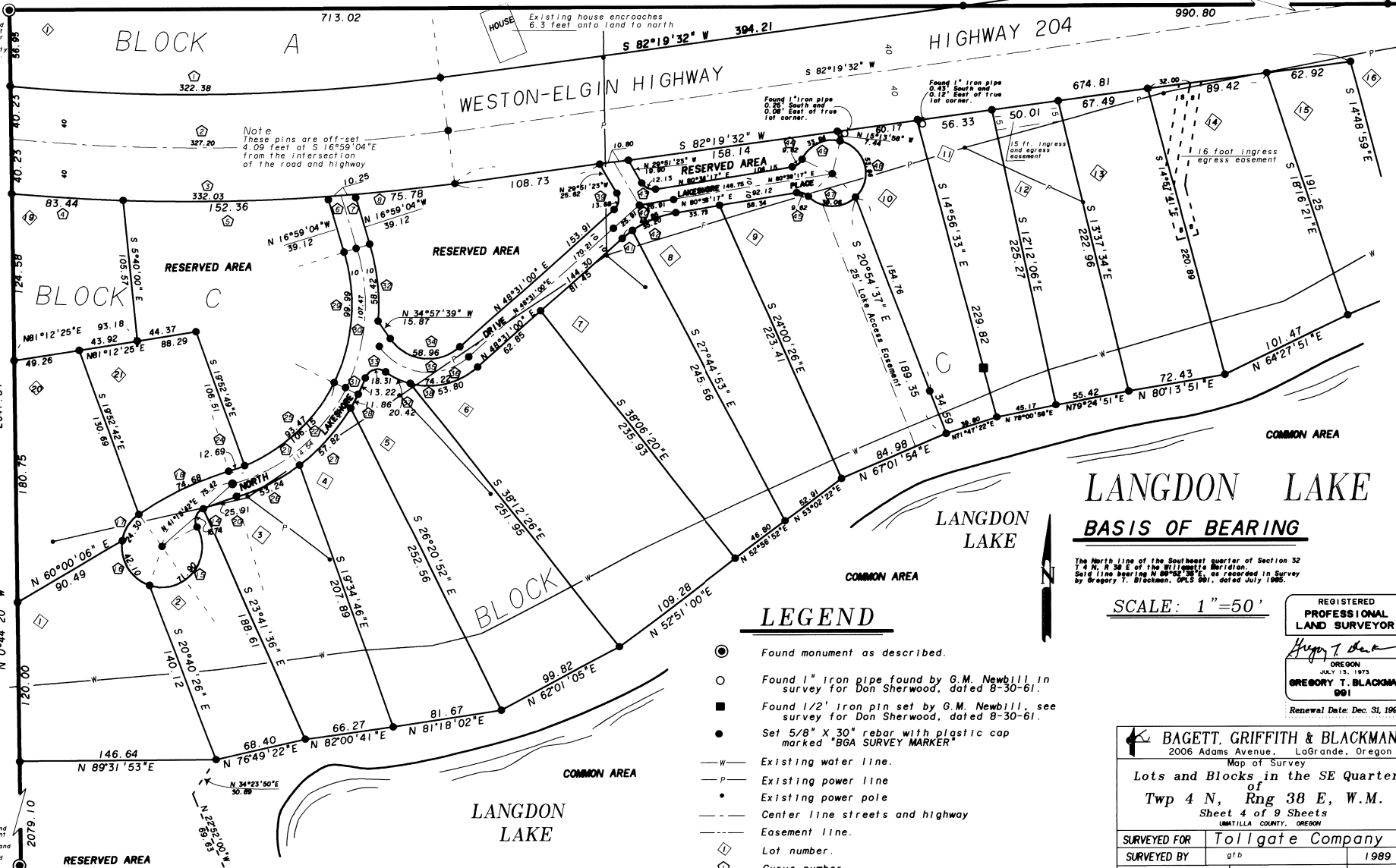
CURVE DATA

CURVE DATA

Table of curve data with columns for R, A, L, T, L.C., S and bearing/angle values for various curve segments.

Center 1/4 corner section 32. Found brass monument set by Donald S. Sydnor in Dec. 1979. See Unit 114 County Survey No. 17156-B.

South 1/4 corner section 32. Found brass cap monument set by G. L. S. Gould, General Land Office Surveyor. Corner monumented in July 1939.



LANGDON LAKE BASIS OF BEARING

The North line of the Southeast quarter of Section 32 T.4 N. R.38 E. of the Willamette Meridian. Said line bearing N 89°52'35\"

SCALE: 1" = 50'

LEGEND

- Found monument as described.
Found 1" iron pipe found by G.M. Newbill in survey for Don Sherwood, dated 8-30-61.
Found 1/2" iron pin set by G.M. Newbill, see survey for Don Sherwood, dated 8-30-61.
Set 5/8" X 30" rebar with plastic cap marked "BGA SURVEY MARKER"
Existing water line.
Existing power line.
Existing power pole.
Center line streets and highway.
Easement line.
Lot number.
Curve number.

REGISTERED PROFESSIONAL LAND SURVEYOR. Gregory T. Blackman, OREGON, JULY 13, 1973, Renewal Date: Dec. 31, 1995.

Surveyor information table including Bagett, Griffith & Blackman, 2006 Adams Avenue, LaGrande, Oregon. Map of Survey Lots and Blocks in the SE Quarter of Twp 4 N, Rng 38 E, W.M. Sheet 4 of 9 Sheets. SURVEYED FOR Tollgate Company, SURVEYED BY gtb, 1989, Scale: 1" = 50', Drawn by: Lucy, Jan. 1995.

LANGDON LAKE

Sheet 5 of 9

BASIS OF BEARING

The North line of the Southeast quarter of Section 32 T 4 N, R 38 E of the Willamette Meridian. Said line bearing N 89°52'35"E, as recorded in Survey by Gregory T. Blackman, OPLS 991, dated July 1985.

SCALE: 1" = 50'

LEGEND


- Found monument as described.
- Set 5/8" X 30" rebar with plastic cap marked "BGA SURVEY MARKER"
- Existing water line.
- Center line streets and highway
- - - Easement line.
- ◇ Lot number.

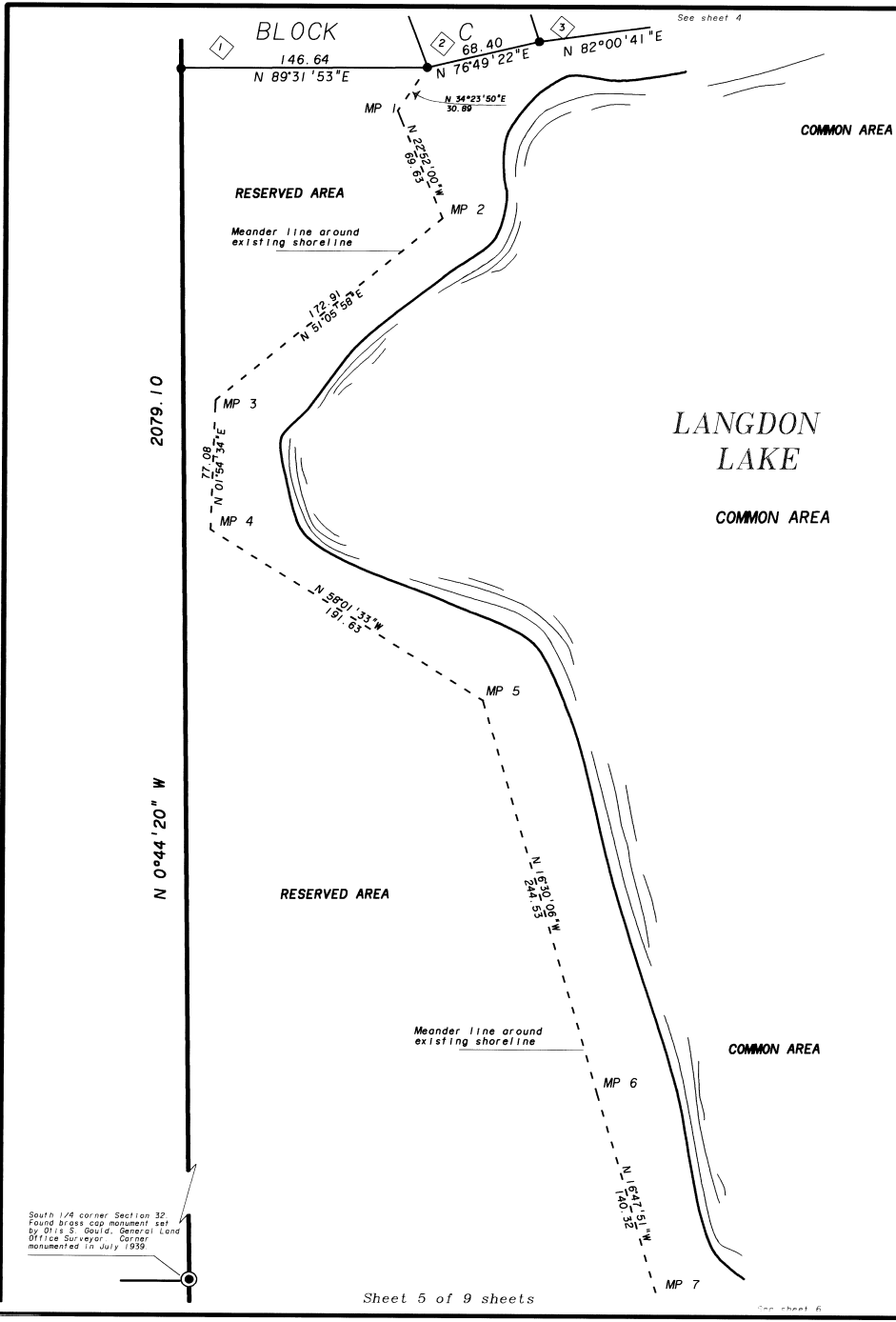
REGISTERED
PROFESSIONAL
LAND SURVEYOR

Gregory T. Blackman

OREGON
JULY 15, 1975
GREGORY T. BLACKMAN
991

Renewal Date: Dec. 31, 1995

 BAGETT, GRIFFITH & BLACKMAN 2006 Adams Avenue, LaGrande, Oregon Map of Survey		
Lots and Blocks in the SE Quarter of Twp 4 N, Rng 38 E, W.M. Sheet 5 of 9 Sheets <small>UMATILLA COUNTY, OREGON</small>		
SURVEYED FOR	Tollgate Company	
SURVEYED BY	gtd	1989
Scale: 1" = 50'	Drawn by: Lucy	Jan. 1995



LANGDON LAKE

Sheet 6 of 9

LANGDON LAKE

Southwest corner Lot 1, Blk C

2079.10

N 0°44'20" W

Meander line around existing shore line.

See sheet 5

MP 7

MP 8

MP 9

MP 10

MP 11

COMMON AREA

COMMON AREA

BASIS OF BEARING

The North line of the Southeast quarter of Section 32 T 4 N, R 38 E of the Willamette Meridian. Said line bearing N 89°52'35"E, as recorded in Survey by Gregory T. Blackman, OPLS 991, dated July 1985.

SCALE: 1" = 50'

LEGEND

- Found monument as described.
- Set 5/8" X 30" rebar with plastic cap marked "BGA SURVEY MARKER"
- Existing water line.
- - - Center line streets and highway
- - - Easement line.
- ◇ Lot number.

RESERVED AREA

RESERVED AREA

RESERVED AREA

South 1/4 corner Section 32. Found brass cap monument set by Orlis S. Gauld, General Land Office Surveyor. Corner monumented in July 1939.

Southeast corner Section 32. Found brass cap monument set by Orlis S. Gauld, General Land Office Surveyor. Corner monumented in July 1939.

S 89°58'04" W

2668.19

32 33

REGISTERED
PROFESSIONAL
LAND SURVEYOR
Gregory T. Blackman
OREGON
JULY 13, 1973
GREGORY T. BLACKMAN
991
Renewal Date: Dec. 31, 1993

BAGETT, GRIFFITH & BLACKMAN 2006 Adams Avenue, LaGrande, Oregon Map of Survey Lots and Blocks in the SE Quarter of Twp 4 N, Rng 38 E, W.M. Sheet 6 of 9 Sheets UMATILLA COUNTY, OREGON	
SURVEYED FOR	Tollgate Company
SURVEYED BY	g'tb 1989
Scale: 1" = 50'	Drawn by: Lucy Jan. 1995

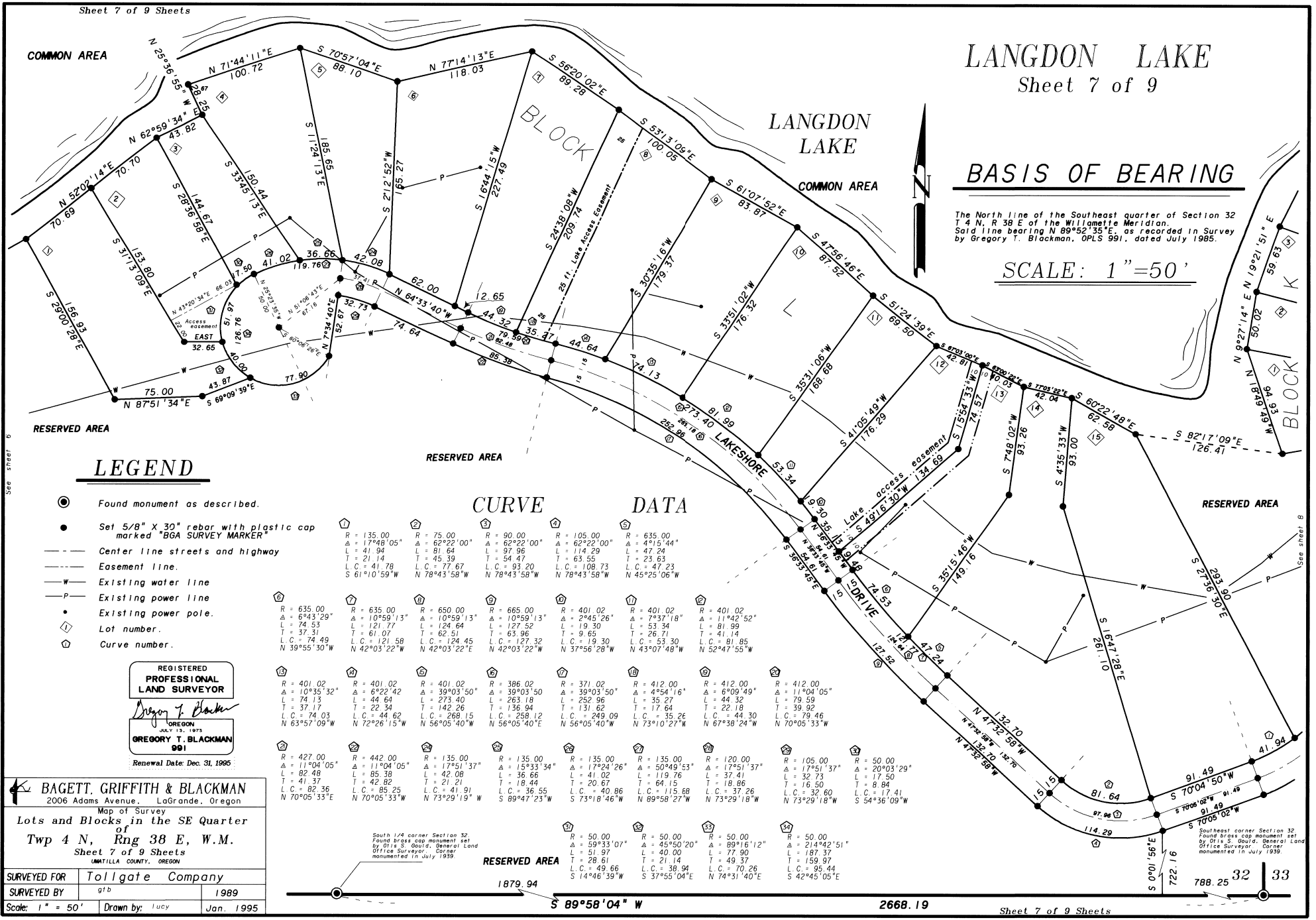
LANGDON LAKE

Sheet 7 of 9

BASIS OF BEARING

The North line of the Southeast quarter of Section 32 T 4 N, R 38 E of the Willamette Meridian. Said line bearing N 89°52'35"E, as recorded in Survey by Gregory T. Blackman, OPLS 991, dated July 1985.

SCALE: 1"=50'



LEGEND

- Found monument as described.
- Set 5/8" X 30" rebar with plastic cap marked "BGA SURVEY MARKER"
- Center line streets and highway
- - - Easement line.
- W Existing water line
- P Existing power line
- Existing power pole.
- ① Lot number.
- ② Curve number.

CURVE DATA

① R = 135.00 Δ = 17°48'05" L = 41.94 T = 21.14 L.C. = 41.78 S 61°10'59"W	② R = 75.00 Δ = 62°22'00" L = 81.64 T = 45.39 L.C. = 77.67 N 78°43'58"W	③ R = 90.00 Δ = 62°22'00" L = 97.96 T = 54.47 L.C. = 93.20 N 78°43'58"W	④ R = 105.00 Δ = 62°22'00" L = 114.29 T = 63.55 L.C. = 108.73 N 78°43'58"W	⑤ R = 635.00 Δ = 4°15'44" L = 47.24 T = 23.63 L.C. = 47.23 N 45°25'06"W	⑥ R = 635.00 Δ = 10°59'13" L = 124.64 T = 62.51 L.C. = 124.45 N 42°03'22"E	⑦ R = 650.00 Δ = 10°59'13" L = 124.64 T = 62.51 L.C. = 124.45 N 42°03'22"E	⑧ R = 665.00 Δ = 10°59'13" L = 127.52 T = 63.96 L.C. = 127.32 N 42°03'22"W	⑨ R = 401.02 Δ = 2°45'26" L = 19.30 T = 9.65 L.C. = 19.30 N 37°56'28"W	⑩ R = 401.02 Δ = 7°57'18" L = 53.34 T = 26.71 L.C. = 53.30 N 43°07'48"W	⑪ R = 401.02 Δ = 11°42'52" L = 81.99 T = 41.14 L.C. = 81.95 N 52°47'55"W	⑫ R = 401.02 Δ = 4°54'16" L = 35.27 T = 18.86 L.C. = 35.26 N 73°10'27"W	⑬ R = 412.00 Δ = 6°09'49" L = 44.32 T = 22.18 L.C. = 44.30 N 67°38'24"W	⑭ R = 412.00 Δ = 11°04'05" L = 79.59 T = 39.92 L.C. = 79.46 N 70°05'33"W	⑮ R = 401.02 Δ = 17°51'37" L = 175.13 T = 87.41 L.C. = 175.13 N 70°05'33"W	⑯ R = 50.00 Δ = 20°03'29" L = 17.50 T = 8.84 L.C. = 17.41 S 54°36'09"W
⑰ R = 427.00 Δ = 11°04'05" L = 82.49 T = 41.37 L.C. = 82.36 N 70°05'33"E	⑱ R = 442.00 Δ = 11°04'05" L = 95.38 T = 42.82 L.C. = 85.25 N 70°05'33"W	⑲ R = 135.00 Δ = 17°51'37" L = 42.08 T = 21.21 L.C. = 41.91 N 73°29'19"W	⑳ R = 135.00 Δ = 15°33'34" L = 36.66 T = 18.44 L.C. = 36.55 S 89°47'23"W	㉑ R = 135.00 Δ = 17°24'26" L = 41.02 T = 20.67 L.C. = 40.86 S 73°18'46"W	㉒ R = 135.00 Δ = 50°49'53" L = 119.76 T = 64.15 L.C. = 115.88 N 89°58'27"W	㉓ R = 120.00 Δ = 17°51'37" L = 37.41 T = 18.86 L.C. = 37.26 N 73°29'18"W	㉔ R = 105.00 Δ = 17°51'37" L = 32.73 T = 16.50 L.C. = 32.60 N 73°29'18"W	㉕ R = 50.00 Δ = 20°03'29" L = 17.50 T = 8.84 L.C. = 17.41 S 54°36'09"W							
㉖ R = 50.00 Δ = 59°33'07" L = 51.97 T = 28.61 L.C. = 49.66 S 14°46'39"W	㉗ R = 50.00 Δ = 45°50'20" L = 40.00 T = 21.14 L.C. = 38.94 S 37°55'04"E	㉘ R = 50.00 Δ = 89°16'12" L = 77.90 T = 49.37 L.C. = 70.26 N 74°31'40"E	㉙ R = 50.00 Δ = 214°42'51" L = 159.37 T = 159.37 L.C. = 95.44 S 42°45'05"E												

REGISTERED
PROFESSIONAL
LAND SURVEYOR

Gregory T. Blackman

OREGON
JULY 13, 1975
GREGORY T. BLACKMAN
991

Renewal Date: Dec. 31, 1985

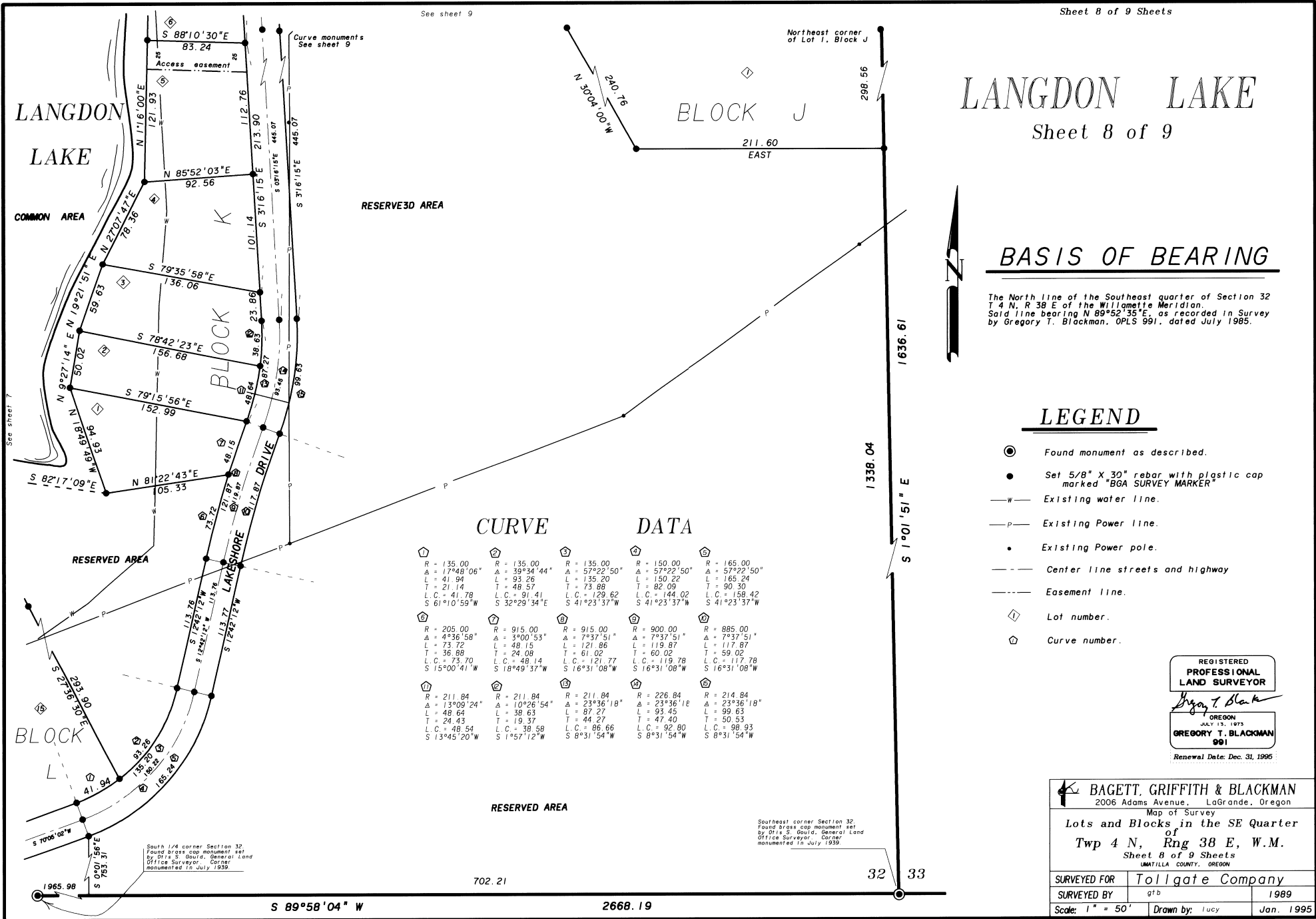
BAGETT, GRIFFITH & BLACKMAN
2006 Adams Avenue, LaGrande, Oregon

Map of Survey
Lots and Blocks in the SE Quarter of Twp 4 N, Rng 38 E, W.M.
Sheet 7 of 9 Sheets
UMATILLA COUNTY, OREGON

SURVEYED FOR	Tollgate Company
SURVEYED BY	gib
Scale: 1" = 50'	Drawn by: Lucy
	1989
	Jan. 1995

South 1/4 corner Section 32
Found brass cap monument set
by Orlis S. Gould, General Land
Office Surveyor, Corner
monumented in July 1939.

Southeast corner Section 32
Found brass cap monument set
by Orlis S. Gould, General Land
Office Surveyor, Corner
monumented in July 1939.



LANGDON LAKE

Sheet 8 of 9

BASIS OF BEARING

The North line of the Southeast quarter of Section 32 T 4 N, R 38 E of the Willamette Meridian. Said line bearing N 89°52'35"E, as recorded in Survey by Gregory T. Blackman, OPLS 991, dated July 1985.

LEGEND

- ⊙ Found monument as described.
- Set 5/8" X 30" rebar with plastic cap marked "BGA SURVEY MARKER"
- w— Existing water line.
- p— Existing Power line.
- Existing Power pole.
- Center line streets and highway
- Easement line.
- ① Lot number.
- ⊕ Curve number.

REGISTERED
PROFESSIONAL
LAND SURVEYOR

Gregory T. Blackman

OREGON
JULY 13, 1973
GREGORY T. BLACKMAN
991

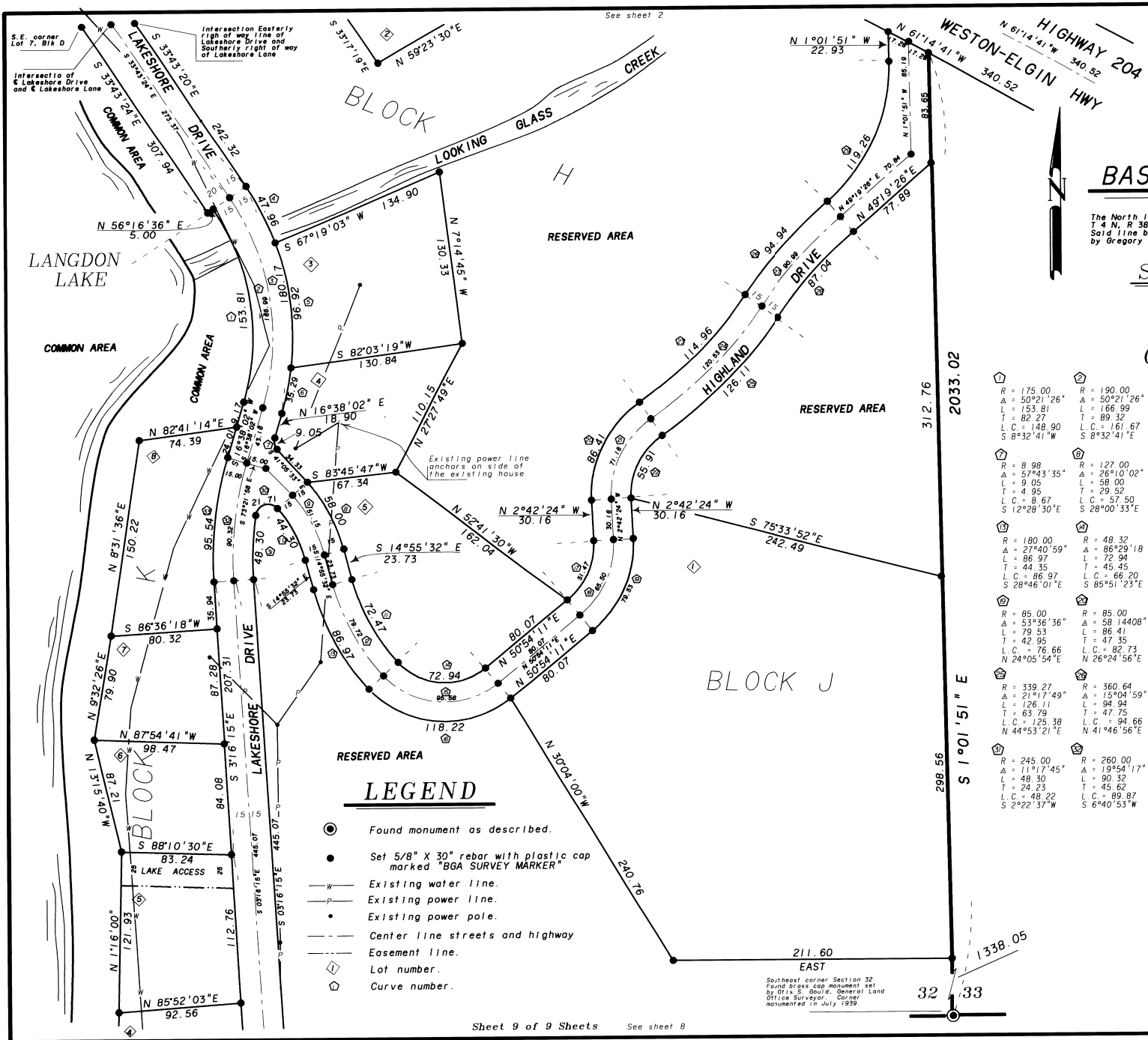
Renewal Date: Dec. 31, 1995

CURVE DATA

① R = 135.00 Δ = 17°48'06" L = 41.94 T = 21.14 L.C. = 41.78 S 61°10'59"W	② R = 135.00 Δ = 39°54'44" L = 93.26 L.C. = 91.41 S 32°29'34"E	③ R = 135.00 Δ = 57°22'50" L = 135.20 T = 73.88 L.C. = 129.62 S 41°23'37"W	④ R = 150.00 Δ = 57°22'50" L = 150.22 T = 82.09 L.C. = 144.02 S 41°23'37"W	⑤ R = 165.00 Δ = 57°22'50" L = 165.24 T = 90.30 L.C. = 158.42 S 41°23'37"W
① R = 205.00 Δ = 4°36'58" L = 73.72 T = 36.88 L.C. = 73.70 S 15°00'41"W	② R = 915.00 Δ = 3°00'53" L = 48.15 T = 24.08 L.C. = 48.14 S 18°49'37"W	③ R = 915.00 Δ = 7°37'51" L = 121.86 T = 61.02 L.C. = 121.77 S 16°31'08"W	④ R = 900.00 Δ = 7°37'51" L = 119.87 T = 60.02 L.C. = 119.78 S 16°31'08"W	⑤ R = 885.00 Δ = 7°37'51" L = 117.87 T = 59.02 L.C. = 117.78 S 16°31'08"W
① R = 211.84 Δ = 13°09'24" L = 48.64 T = 24.43 L.C. = 48.54 S 13°45'20"W	② R = 211.84 Δ = 10°26'54" L = 38.63 T = 19.37 L.C. = 38.58 S 1°57'12"W	③ R = 211.84 Δ = 23°36'18" L = 87.27 T = 44.27 L.C. = 86.66 S 8°31'54"W	④ R = 226.84 Δ = 23°36'18" L = 93.45 T = 47.40 L.C. = 92.90 S 8°31'54"W	⑤ R = 214.84 Δ = 23°36'18" L = 99.63 T = 50.53 L.C. = 98.93 S 8°31'54"W

BAGETT, GRIFFITH & BLACKMAN
2006 Adams Avenue, LaGrande, Oregon
Map of Survey
Lots and Blocks in the SE Quarter
of
Twp 4 N, Rng 38 E, W.M.
Sheet 8 of 9 Sheets
UMATILLA COUNTY, OREGON

SURVEYED FOR	Tollgate Company	
SURVEYED BY	g'tb	1989
Scale: 1" = 50'	Drawn by: Lucy	Jan. 1995



LANGDON LAKE

BASIS OF BEARING

The North line of the Southeast quarter of Section 32 T 4 N, R 38 E of the Willamette Meridian. Said line bearing N 89°52'35" E as recorded in Survey by Gregory T. Blackman, OPLS 991, dated July 1985.

SCALE: 1" = 50'

CURVE		DATA	
R = 175.00 Δ = 50°21'26" L = 153.81 T = 82.27 L.C. = 148.90 S 6°32'41"E	R = 190.00 Δ = 50°21'26" L = 166.99 T = 89.32 L.C. = 161.67 S 8°32'41"E	R = 205.00 Δ = 50°21'26" L = 180.17 T = 96.37 L.C. = 174.43 S 8°32'41"E	R = 205.00 Δ = 26°10'02" L = 47.96 T = 24.09 L.C. = 47.85 S 27°01'16"E
R = 8.98 Δ = 57°43'35" L = 9.05 T = 4.95 L.C. = 8.67 S 12°28'30"E	R = 127.00 Δ = 26°10'02" L = 58.00 T = 29.52 L.C. = 57.50 S 28°00'33"E	R = 112.00 Δ = 26°10'02" L = 51.15 T = 22.54 L.C. = 50.71 S 28°00'33"E	R = 97.00 Δ = 26°10'02" L = 44.30 T = 22.54 L.C. = 43.92 S 28°00'33"E
R = 180.00 Δ = 27°40'59" L = 86.97 T = 44.35 L.C. = 86.97 S 28°46'01"E	R = 48.32 Δ = 86°29'18" L = 72.94 T = 45.45 L.C. = 66.20 S 85°51'23"E	R = 63.32 Δ = 86°29'18" L = 95.58 T = 59.55 L.C. = 86.76 S 85°51'23"E	R = 78.32 Δ = 86°29'18" L = 55.81 T = 30.64 L.C. = 107.31 S 85°51'23"E
R = 85.00 Δ = 53°36'36" L = 79.53 T = 42.95 L.C. = 76.66 S 24°05'54"E	R = 85.00 Δ = 58°14'08" L = 86.41 T = 47.35 L.C. = 82.73 N 26°24'56"E	R = 70.00 Δ = 58°14'40" L = 71.16 T = 30.64 L.C. = 68.13 N 26°24'56"E	R = 55.00 Δ = 58°14'40" L = 55.81 T = 30.64 L.C. = 53.53 N 26°24'56"E
R = 339.27 Δ = 21°17'49" L = 126.11 T = 63.79 L.C. = 125.38 N 44°53'21"E	R = 360.64 Δ = 15°04'59" L = 94.94 T = 47.75 L.C. = 94.66 N 41°46'56"E	R = 345.64 Δ = 15°04'59" L = 90.99 T = 45.76 L.C. = 90.73 N 41°46'56"E	R = 330.64 Δ = 15°04'59" L = 87.04 T = 43.77 L.C. = 86.79 N 41°46'56"E
R = 245.00 Δ = 11°17'45" L = 48.30 T = 24.23 L.C. = 48.22 S 2°22'37"W	R = 260.00 Δ = 19°54'17" L = 90.32 T = 45.62 L.C. = 89.87 S 6°40'53"W	R = 275.00 Δ = 19°54'17" L = 95.54 T = 48.25 L.C. = 95.06 S 6°40'53"W	R = 205.00 Δ = 27°05'19" L = 96.92 T = 49.38 L.C. = 96.02 S 6°46'23"E
R = 205.00 Δ = 27°05'19" L = 96.92 T = 49.38 L.C. = 96.02 S 6°46'23"E	R = 205.00 Δ = 27°05'19" L = 96.92 T = 49.38 L.C. = 96.02 S 6°46'23"E	R = 205.00 Δ = 27°05'19" L = 96.92 T = 49.38 L.C. = 96.02 S 6°46'23"E	R = 205.00 Δ = 27°05'19" L = 96.92 T = 49.38 L.C. = 96.02 S 6°46'23"E

LEGEND

- Found monument as described.
- Set 5/8" X 30" rebar with plastic cap marked "BGA SURVEY MARKER"
- Existing water line.
- Existing power line.
- Existing power pole.
- Center line streets and highway
- Easement line.
- ◇ Lot number.
- ⊙ Curve number.

REGISTERED
PROFESSIONAL
LAND SURVEYOR

Gregory T. Blackman

OREGON
JULY 13, 1975
GREGORY T. BLACKMAN
991

Renewal Date: Dec. 31, 1995

BAGETT, GRIFFITH & BLACKMAN
2006 Adams Avenue, LaGrande, Oregon

Map of Survey
Lots and Blocks in the SE Quarter
of
Twp 4 N, Rng 38 E, W.M.
Sheet 9 of 9 Sheets
UMATILLA COUNTY, OREGON

SURVEYED FOR	Tollgate Company
SURVEYED BY	gtb
Scale: 1" = 50'	Drawn by: Lucy
	Jan. 1995