

SECTION CORNER FOUND REDFIELD'S 2" X 3/8" GALV. IRON PIPE WITH 2 1/2" BRASS CAP LYING LOOSE AT ANCIENT FENCE INTERSECTION. MEASUREMENT SHOWN IS TO FENCE INTERSECTION.

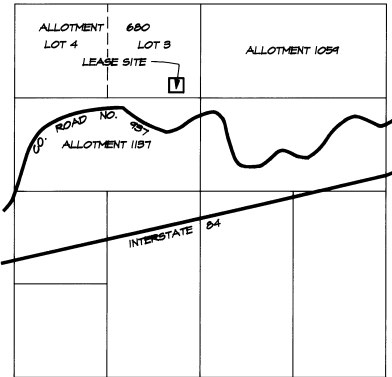
NARRATIVE OF SURVEY

THE PURPOSE OF THIS SURVEY WAS TO LOCATE A PROPOSED LEASE SITE ON ALLOTMENT 680, UMATILLA INDIAN RESERVATION. ALSO, MEASUREMENTS WERE MADE TO AN EXISTING DIRT ROAD LEADING TO THE SITE FROM THE COUNTY ROAD. DESCRIPTIONS FOR THE PROPOSED LEASE SITE AND INGRESS-EGRESS EASEMENT FROM COUNTY ROAD NO. 497 ARE PREPARED SEPARATELY.

THE MONUMENT FOR THE NORTH 1/16TH CORNER COMMON TO SECTIONS 2 AND 9 WAS FOUND LYING ON THE GROUND NEAR A DIRT ROAD. AFTER VERIFICATION BY SURVEY MEASUREMENT TO CORNER EVIDENCE NORTH AND SOUTH OF THE CORNER LOCATION, THIS CORNER WAS RE-ESTABLISHED BASED ON COORDINATE INFORMATION SHOWN ON STATE HIGHWAY DRAWING NO. 28-14-28, DATED OCTOBER, 1960. GRID DISTANCES SHOWN BETWEEN STATE PLANE COORDINATE VALUES ON DRAWINGS NO. 28-14-28 WERE CONVERTED TO GROUND DISTANCE TO CALCULATE THE RE-ESTABLISHED CORNER POSITION.

THIS SURVEY WAS MADE BY A COMBINATION OF CLOSED TRAVERSE AND RADIAL TIES WITH A LIETZ SET 38, 1 SECOND TOTAL STATION. BASIS OF BEARINGS IS AS NOTED ON THIS PLAT.

LATITUDE AND LONGITUDE SHOWN IS CALCULATED FROM TIES TO HORIZONTAL CONTROL STATION 'BIG HILL' AND ITS AZIMUTH MARK, COORDINATE VALUES PUBLISHED BY THE NATIONAL GEODETIC SURVEY, ROCKVILLE, MD., DATED FEBRUARY, 1967.



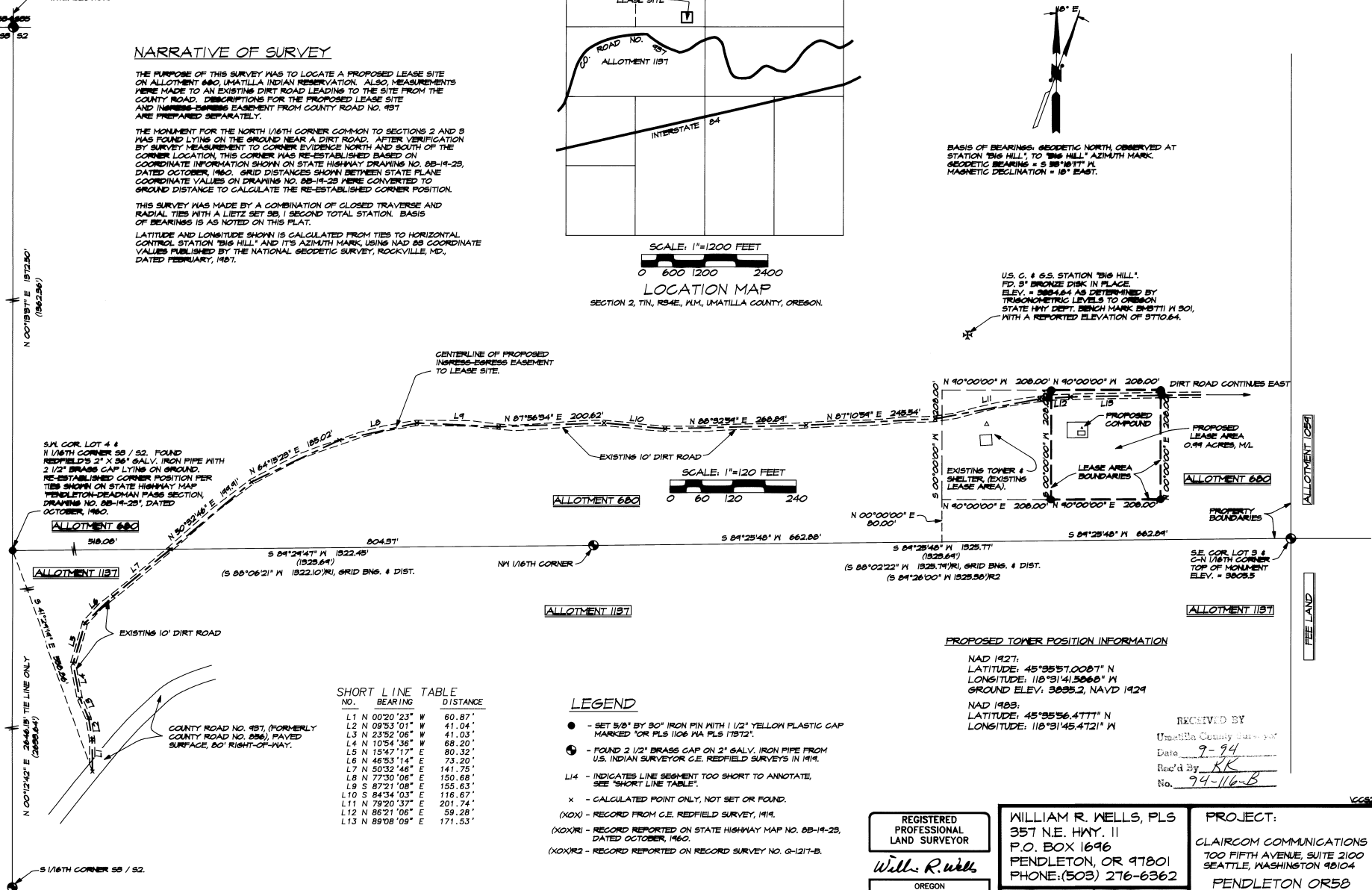
SCALE: 1"=1200 FEET
0 600 1200 2400

LOCATION MAP

SECTION 2, T1N, R34E, 11M, UMATILLA COUNTY, OREGON.



BASIS OF BEARINGS: GEODETIC NORTH OBSERVED AT STATION 'BIG HILL', TO 'BIG HILL' AZIMUTH MARK. GEODETIC BEARING = S 88°18'11" W. MAGNETIC DECLINATION = 16° EAST.



U.S. C. # 65, STATION 'BIG HILL', FP, 3" BRONZE DISK IN PLACE. ELEV. = 5004.64 AS DETERMINED BY TRIGONOMETRIC LEVELS TO OREGON STATE HWY DEPT. BENCH MARK (B5711) W 80', WITH A REPORTED ELEVATION OF 5110.64.

SCALE: 1"=120 FEET
0 60 120 240

PROPOSED TOWER POSITION INFORMATION

NAD 1927:
LATITUDE: 45°35'57.0087" N
LONGITUDE: 118°31'41.5068" W
GROUND ELEV.: 3035.2, NAVD 1929

NAD 1983:
LATITUDE: 45°35'56.4777" N
LONGITUDE: 118°31'45.4721" W

RECEIVED BY
Umatilla County Surveyor
Date: 7-94
Rec'd By: KK
No. 94-116-B

NO.	BEARING	DISTANCE
L1	N 00°20'23" W	80.87'
L2	N 09°53'01" W	41.04'
L3	N 23°52'06" W	41.03'
L4	N 10°54'36" W	88.20'
L5	N 15°47'11" E	80.32'
L6	N 46°53'14" E	73.20'
L7	N 50°32'46" E	141.75'
L8	N 77°30'08" E	150.88'
L9	S 87°21'08" E	125.63'
L10	S 84°34'03" E	116.67'
L11	N 79°20'37" E	201.74'
L12	N 86°21'08" E	59.28'
L13	N 89°08'09" E	171.53'

LEGEND

- - SET 5/8" BY 30" IRON PIN WITH 1 1/2" YELLOW PLASTIC CAP MARKED 'OR PLS 1106 N/A PLS 17872'.
- ⊙ - FOUND 2 1/2" BRASS CAP ON 2" GALV. IRON PIPE FROM U.S. INDIAN SURVEYOR G.E. REDFIELD SURVEYS IN 1919.
- L14 - INDICATES LINE SEGMENT TOO SHORT TO ANNOTATE, SEE "SHORT LINE TABLE".
- x - CALCULATED POINT ONLY, NOT SET OR FOUND.
- (XOX) - RECORD FROM G.E. REDFIELD SURVEY, 1919.
- (XOX)R1 - RECORD REPORTED ON STATE HIGHWAY MAP NO. 28-14-28, DATED OCTOBER, 1960.
- (XOX)R2 - RECORD REPORTED ON RECORD SURVEY NO. G-1217-B.

REGISTERED PROFESSIONAL LAND SURVEYOR

William R. Wells

OREGON
JULY 22, 1977
WILLIAM R. WELLS
1106
RENEWS 12/31/94

WILLIAM R. WELLS, PLS
357 N.E. HWY. 11
P.O. BOX 1696
PENDLETON, OR 97801
PHONE: (503) 276-6362

DATE: 8/1/94 DR. BY: HWH
CK. BY: HWH NO. 44-281

PROJECT:
CLAIRCOM COMMUNICATIONS
700 FIFTH AVENUE, SUITE 2100
SEATTLE, WASHINGTON 98104
PENDLETON OR58