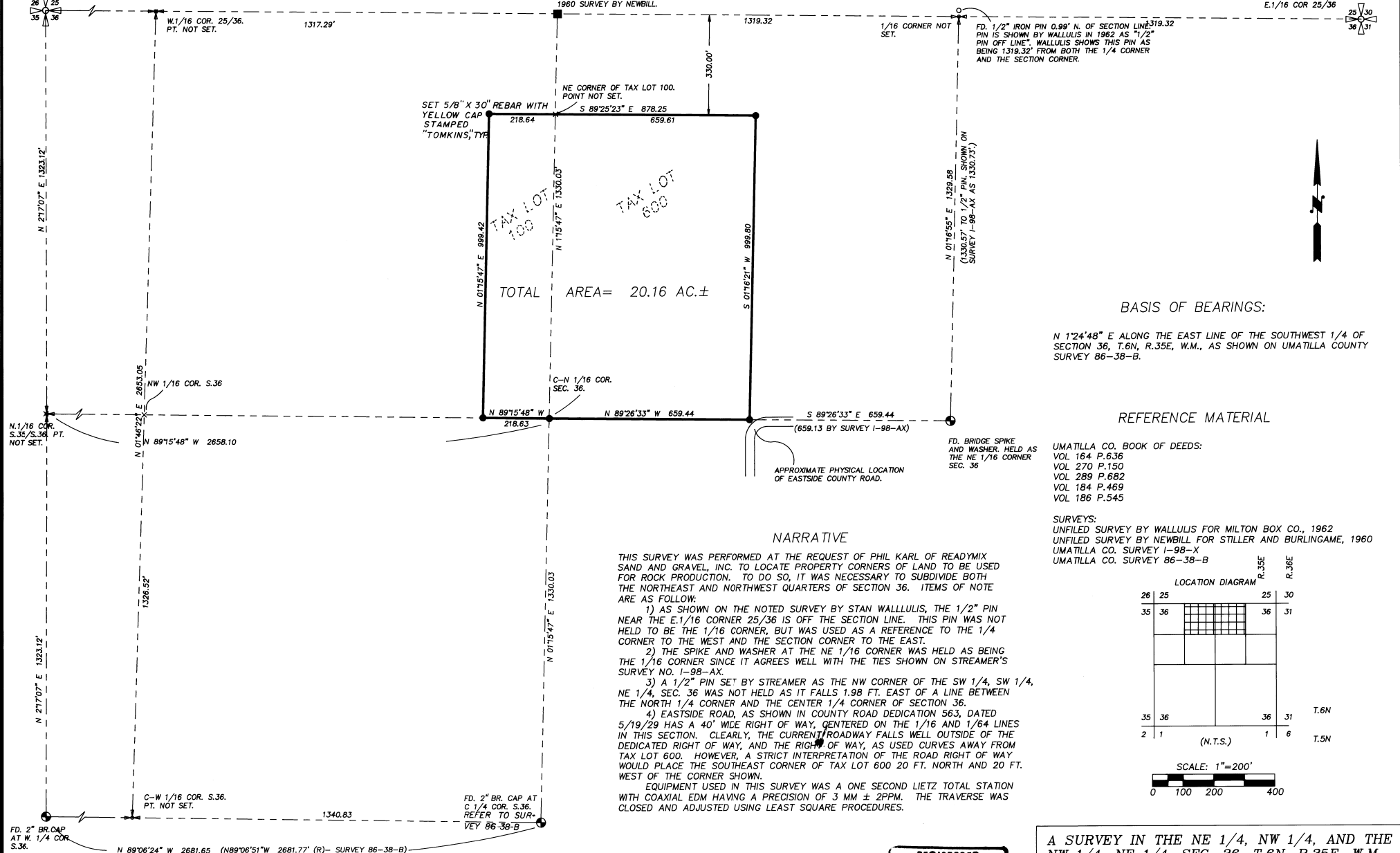


RESET RR SPIKE AT NW CORNER SECTION 36 OFF TIES ON WITNESS CORNERS NE AND SE OF CORNER.



SET 2" BRASS CAP ON PIPE AND ACCESSORIES ON LINE BETWEEN SECTION CORNERS, 1319.32' FROM E. 1/16 CORNER, AS SHOWN ON WALLULIS SURVEY, AND 1960 SURVEY BY NEWBILL.

S 89°25'23" E 2638.64

N.E. COR SEC. 36 ESTABLISHED AS 35.49' FROM WITNESS COR. AND 1319.32' FROM 1/2" PIN NEAR THE E. 1/16 COR 25/36

SET 5/8" X 30" REBAR WITH YELLOW CAP STAMPED "TOMKINS," TYPE

TOTAL AREA = 20.16 AC. ±

BASIS OF BEARINGS:

N 1°24'48" E ALONG THE EAST LINE OF THE SOUTHWEST 1/4 OF SECTION 36, T.6N, R.35E, W.M., AS SHOWN ON UMATILLA COUNTY SURVEY 86-38-B.

REFERENCE MATERIAL

UMATILLA CO. BOOK OF DEEDS:
VOL 164 P.636
VOL 270 P.150
VOL 289 P.682
VOL 184 P.469
VOL 186 P.545

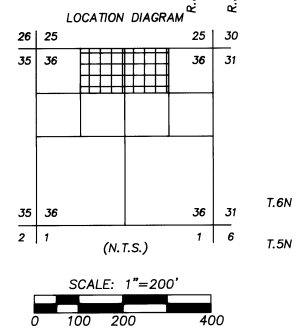
NARRATIVE

THIS SURVEY WAS PERFORMED AT THE REQUEST OF PHIL KARL OF READYMIX SAND AND GRAVEL, INC. TO LOCATE PROPERTY CORNERS OF LAND TO BE USED FOR ROCK PRODUCTION. TO DO SO, IT WAS NECESSARY TO SUBDIVIDE BOTH THE NORTHEAST AND NORTHWEST QUARTERS OF SECTION 36. ITEMS OF NOTE ARE AS FOLLO:

- 1) AS SHOWN ON THE NOTED SURVEY BY STAN WALLULIS, THE 1/2" PIN NEAR THE E. 1/16 CORNER 25/36 IS OFF THE SECTION LINE. THIS PIN WAS NOT HELD TO BE THE 1/16 CORNER, BUT WAS USED AS A REFERENCE TO THE 1/4 CORNER TO THE WEST AND THE SECTION CORNER TO THE EAST.
- 2) THE SPIKE AND WASHER AT THE NE 1/16 CORNER WAS HELD AS BEING THE 1/16 CORNER SINCE IT AGREES WELL WITH THE TIES SHOWN ON STREAMER'S SURVEY NO. I-98-AX.
- 3) A 1/2" PIN SET BY STREAMER AS THE NW CORNER OF THE SW 1/4, SW 1/4, NE 1/4, SEC. 36 WAS NOT HELD AS IT FALLS 1.98 FT. EAST OF A LINE BETWEEN THE NORTH 1/4 CORNER AND THE CENTER 1/4 CORNER OF SECTION 36.
- 4) EASTSIDE ROAD, AS SHOWN IN COUNTY ROAD DEDICATION 563, DATED 5/19/29 HAS A 40' WIDE RIGHT OF WAY, CENTERED ON THE 1/16 AND 1/64 LINES IN THIS SECTION. CLEARLY, THE CURRENT ROADWAY FALLS WELL OUTSIDE OF THE DEDICATED RIGHT OF WAY, AND THE RIGHT OF WAY, AS USED CROSSES AWAY FROM TAX LOT 600. HOWEVER, A STRICT INTERPRETATION OF THE ROAD RIGHT OF WAY WOULD PLACE THE SOUTHEAST CORNER OF TAX LOT 600 20 FT. NORTH AND 20 FT. WEST OF THE CORNER SHOWN.

EQUIPMENT USED IN THIS SURVEY WAS A ONE SECOND LIETZ TOTAL STATION WITH COAXIAL EDM HAVING A PRECISION OF 3 MM ± 2PPM. THE TRAVERSE WAS CLOSED AND ADJUSTED USING LEAST SQUARE PROCEDURES.

SURVEYS:
UNFILED SURVEY BY WALLULIS FOR MILTON BOX CO., 1962
UNFILED SURVEY BY NEWBILL FOR STILLER AND BURLINGAME, 1960
UMATILLA CO. SURVEY I-98-X
UMATILLA CO. SURVEY 86-38-B



REGISTERED PROFESSIONAL LAND SURVEYOR
PAUL W. P. TOMKINS
JULY 26, 1980
3889

RECORDED BY
9-90
90-643

A SURVEY IN THE NE 1/4, NW 1/4, AND THE NW 1/4, NE 1/4, SEC. 36, T.6N, R.35E, W.M.
FOR: READYMIX SAND AND GRAVEL, INC.
HIGHWAY 11 MILTON FREEWATER, OR.
PAUL W.P. TOMKINS, L.S.
14 EAST MAIN SUITE 5
WALLA WALLA, WA. 99362
(509) 522-4843
DATE: AUGUST, 1990
SCALE: 1"=200'