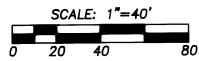


STATION "PENDAIR" (C&GS 1963)  
 PENDLETON CITY COORDS: N = 58616.322  
 E = 30567.292  
 STATE PLANE COORDS: N = 742664.56  
 (NAD 27) E = 2420855.92  
 STATE PLANE COORDS: N = 226348.412  
 (NAD 83 METERS) E = 2628187.894



VERTICAL DATUM  
 MSL, AS DETERMINED BY CITY OF  
 PENDLETON ON U.S.E. B.M. K-306  
 (ELEV. = 1484.54)

**LEGEND**

- - PERMANENT MONUMENT. SET 3 1/2" X 3' CONCRETE FILLED GALVANIZED IRON PIPE WITH 3 1/2" BRASS CAP MARKED "NWS, 1990, PLS1106" AND WITH PENDLETON CITY COORDINATES, NAD 27 STATE PLANE COORDINATES AND THE ELEVATION STAMPED ON IT.
- - SET 5/8" X 30" IRON PIN WITH 2" ALUMINUM CAP MARKED "NWS 1990 PLS 1106".
- - FOUND PK NAIL BY CITY OF PENDLETON.
- ⊕ - SOUTHEAST CORNER OF SECTION 31, T3N, R32E, W.M.. FOUND 2" BRASS CAP, SET IN CONCRETE.

**STATE PLANE COORDINATES FOR CORNERS OF TRACT (NAD 27-ORE. NORTH ZONE)**

SE CORNER (TPOB) N= 742184.510 E= 2421421.081  
 SW CORNER N= 742177.291 E= 2421121.208  
 NW CORNER N= 742427.184 E= 2421115.192  
 NE CORNER N= 742434.404 E= 2421415.084

ROTATE LEGAL DESCRIPTION BEARINGS 113°50' COUNTERCLOCKWISE TO OBTAIN NAD 27 GRID BEARINGS.

**CERTIFICATE OF SURVEY**

THIS IS TO CERTIFY THAT THE UNDERSIGNED REGISTERED PROFESSIONAL LAND SURVEYOR HAS COMPLETED A TRUE AND ACCURATE SURVEY OF THE ABOVE DESCRIBED LANDS AND SET MONUMENTS AS SHOWN ON THIS PLAT. THE RESULTS SHOWN ON THIS PLAT ARE THE RESULT OF AN ACTUAL SURVEY ON THE GROUND, IN COMPLIANCE WITH OREGON SURVEY STATUTES.

REGISTERED PROFESSIONAL LAND SURVEYOR  
 WILLIAM R. WELLS  
 1106

William R. Wells  
 WILLIAM R. WELLS, PLS

**LEGAL DESCRIPTION**

A TRACT OF LAND LOCATED IN THE S.E. 1/4 OF SECTION 31, T3N, R32E, W.M., UMATILLA COUNTY, OREGON, DESCRIBED AS FOLLOWS:

COMMENCING AT THE SOUTHEAST CORNER OF SAID SECTION 31, HAVING PENDLETON CITY COORDINATES OF N=57582.608, E=31893.498; THENCE SOUTH 89°51'05" WEST A DISTANCE OF 740.00 FEET TO A POINT IN THE CENTERLINE OF N.W. 56TH DRIVE, HAVING PENDLETON CITY COORDINATES OF N=57580.689, E=31153.498; THENCE NORTH 00°08'55" WEST ALONG SAID CENTERLINE A DISTANCE OF 543.57 FEET TO A POINT HAVING PENDLETON CITY COORDINATES OF N=58124.257, E=31152.089; THENCE SOUTH 89°51'05" WEST A DISTANCE OF 30.00 FEET TO A POINT ON THE WEST LINE OF THE EASEMENT KNOWN AS N.W. 56TH DRIVE, THE TRUE POINT OF BEGINNING FOR THIS DESCRIPTION, HAVING PENDLETON CITY COORDINATES OF N=58124.179, E=31122.089;

THENCE CONTINUING SOUTH 89°51'05" WEST A DISTANCE OF 300.00 FEET TO A POINT HAVING PENDLETON CITY COORDINATES OF N=58123.401, E=30822.090; THENCE NORTH 00°08'55" WEST A DISTANCE OF 250.00 FEET TO A POINT HAVING PENDLETON CITY COORDINATES OF N=58373.400, E=30821.441; THENCE NORTH 89°51'05" EAST A DISTANCE OF 300.00 FEET TO A POINT ON THE WEST LINE OF THE EASEMENT KNOWN AS N.W. 56TH DRIVE, HAVING PENDLETON CITY COORDINATES OF N=58374.178, E=31121.440; THENCE SOUTH 00°08'55" EAST ALONG THE WEST LINE OF SAID EASEMENT A DISTANCE OF 250.00 FEET TO THE TRUE POINT OF BEGINNING.

THE TRACT OF LAND DESCRIBED CONTAINS 75,000 SQUARE FEET OR 1.722 ACRES, MORE OR LESS.

NOTE: PER LEASE AGREEMENT, CITY IS TO PROVIDE RIGHT-OF-WAY FOR ACCESS TO THE LEASE TRACT.

**NARRATIVE OF SURVEY**

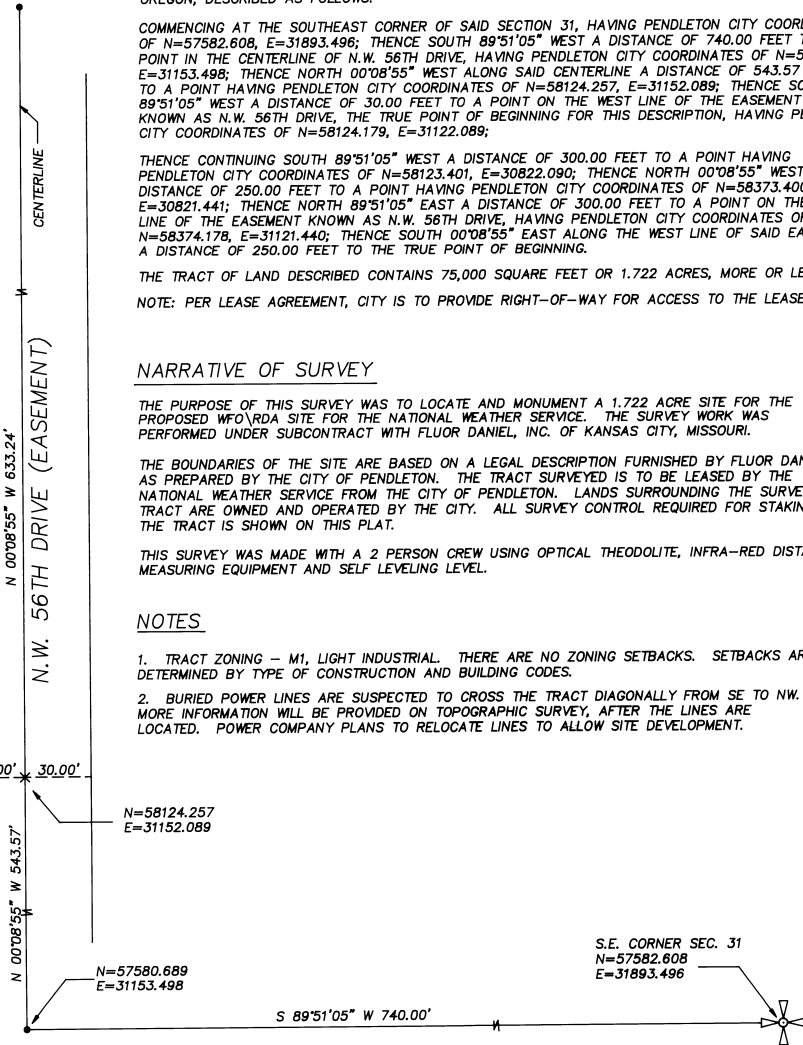
THE PURPOSE OF THIS SURVEY WAS TO LOCATE AND MONUMENT A 1.722 ACRE SITE FOR THE PROPOSED WFO\WDA SITE FOR THE NATIONAL WEATHER SERVICE. THE SURVEY WORK WAS PERFORMED UNDER SUBCONTRACT WITH FLUOR DANIEL, INC. OF KANSAS CITY, MISSOURI.

THE BOUNDARIES OF THE SITE ARE BASED ON A LEGAL DESCRIPTION FURNISHED BY FLUOR DANIEL, AS PREPARED BY THE CITY OF PENDLETON. THE TRACT SURVEYED IS TO BE LEASED BY THE NATIONAL WEATHER SERVICE FROM THE CITY OF PENDLETON. LANDS SURROUNDING THE SURVEYED TRACT ARE OWNED AND OPERATED BY THE CITY. ALL SURVEY CONTROL REQUIRED FOR STAKING THE TRACT IS SHOWN ON THIS PLAT.

THIS SURVEY WAS MADE WITH A 2 PERSON CREW USING OPTICAL THEODOLITE, INFRA-RED DISTANCE MEASURING EQUIPMENT AND SELF LEVELING LEVEL.

**NOTES**

1. TRACT ZONING - M1, LIGHT INDUSTRIAL. THERE ARE NO ZONING SETBACKS. SETBACKS ARE DETERMINED BY TYPE OF CONSTRUCTION AND BUILDING CODES.
2. BURIED POWER LINES ARE SUSPECTED TO CROSS THE TRACT DIAGONALLY FROM SE TO NW. MORE INFORMATION WILL BE PROVIDED ON TOPOGRAPHIC SURVEY, AFTER THE LINES ARE LOCATED. POWER COMPANY PLANS TO RELOCATE LINES TO ALLOW SITE DEVELOPMENT.



S.E. CORNER SEC. 31  
 N=57582.608  
 E=31893.498

N=58124.257  
 E=31152.089

N=57580.689  
 E=31153.498

WILLIAM R. WELLS, PLS P.O. BOX 1696 PENDLETON, OREGON 97801 PHONE: (503) 276-6362		PROJECT: SURVEY FOR NATIONAL WEATHER SERVICE PROJECT NAME: PENDLETON, OR CLIN FILE: GX	
DATE: 6/22/90	DR. BY: WQ	SURVEYED UNDER SUBCONTRACT WITH FLUOR DANIEL, INC. KANSAS CITY, MISSOURI	
CK. BY: WRW	NO: WRW		