

HERMISTON PORT - UNIT ONE

INCLUDING THE REPLAT OF BLOCKS 4 & 5 OF HIGHLANDER CENTER - UNIT TWO
in the NW 1/4 of Section 24, T4N, R28E, W.M., Umatilla County

DEDICATION

Know all men by these presents that the under-
signed owners of said tract of land designated in
the Surveyor's Certificate do hereby establish
and acknowledge the accompanying Plat as the
official map of "PORT OF UMATILLA - UNIT ONE,"
including the "REPLAT OF BLOCKS 4 & 5 OF HIGHLANDER
CENTER - UNIT TWO", and do hereby dedicate to the
Public forever the road and utility easements and
roadways designated thereon.

PORT OF UMATILLA
A Public Municipality

Dale Chapman
Dale Chapman
President

State of Oregon } 55
County of Umatilla

On this 10th day of October, 1989, appeared
personally the above signed, who are known to me
to be the identical individuals who executed the
Plat dedication and acknowledged to me that they
executed the same free and voluntarily.

Janice A. Warner
Janice A. Warner
Notary Public for the
State of Oregon

My Commission
Expires: 11-16-92

INLAND EMPIRE BANK INC.

Dee Foster
Dee Foster
President

State of Oregon } 55
County of Umatilla

On this 5th day of OCTOBER, 1989, appeared
personally the above signed, who are known to me
to be the identical individuals who executed the
Plat dedication and acknowledged to me that they
executed the same free and voluntarily.

Debbie Redick
Debbie Redick
Notary Public for the
State of Oregon

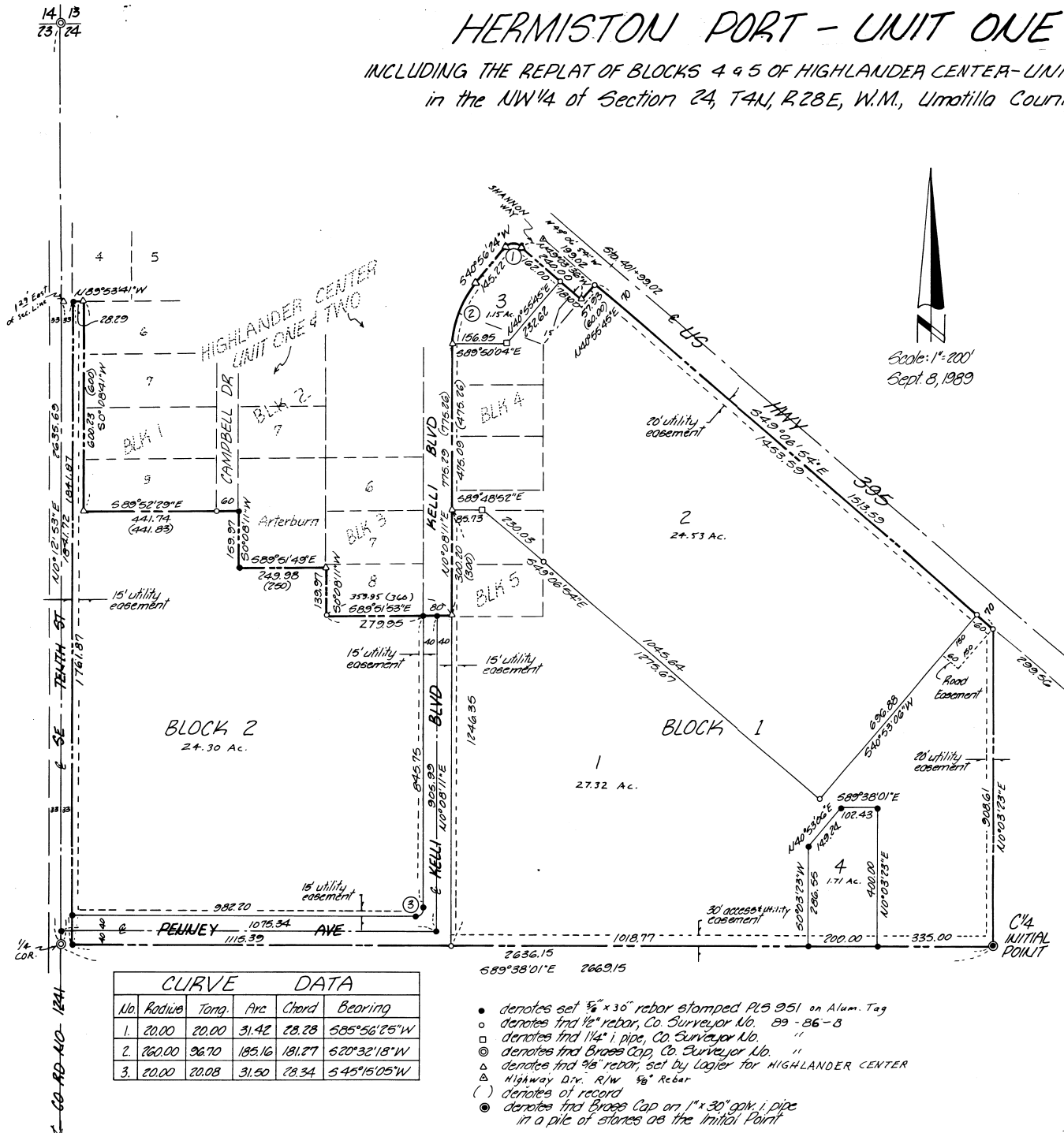
My Commission
Expires: 5-8-92

Prepared By:

Edwards Surveying
P.O. Box 763
Hermiston, Oregon 97838
Phone: 567-3336

I, G. Dennis Edwards, certify that this is an
exact copy of "HERMISTON PORT - UNIT ONE INCLUDING
THE REPLAT OF BLOCKS 4 & 5 OF HIGHLANDER CENTER -
UNIT TWO."
G. Dennis Edwards

Street 1 of 2



HERMISTON PORT - UNIT ONE

INCLUDING THE REPLAT OF BLOCKS 4 & 5 OF HIGHLANDER CENTER-UNIT TWO
in the NW 1/4 of Section 24, T4N, R28E, W.M., Umatilla County

SURVEYOR'S CERTIFICATE

I, G. Dennis Edwards, being first duly sworn depose and say that I have surveyed and marked with proper monuments as indicated on the accompanying Plat of "HERMISTON PORT-UNIT ONE" including the "REPLAT OF BLOCKS 4 & 5 OF HIGHLANDER CENTER-UNIT TWO" an addition in the County of Umatilla, Oregon, and the exterior boundaries being described as:

A parcel of land located in the NW 1/4 of Section 24, T4N, R28E, W.M., in the County of Umatilla, Oregon and being more particularly described as:
Beginning at the SE corner of the NW 1/4 of Section 24, T4N, R28E, W.M., Umatilla County, Oregon; thence N0°03'23"E along the East line of said NW 1/4 a distance of 908.61 feet to a point on the Southerly right-of-way line of U.S. Highway 395; thence N49°06'54"W along said Southerly right-of-way line a distance of 1513.69 feet; thence S40°55'45"W a distance of 57.93 feet to the NE corner of Lot 1, Block 4, of HIGHLANDER CENTER-UNIT TWO; thence N49°03'36"W along the Southerly right-of-way line of Shannon Way a distance of 240.00 feet; thence along a 20 foot radius curve to the left a distance of 31.42 feet, the chord which bears S85°56'25"W a distance of 28.28 feet to a point on the Easterly right-of-way line of Kelli Boulevard; thence S40°56'24"W along said Easterly right-of-way line a distance of 145.22 feet; thence continuing along said Easterly right-of-way line along a 20 foot radius curve to the left a distance of 155.16 feet, the chord which bears S20°32'18"W a distance of 181.27 feet; thence continuing along said Easterly right-of-way line S0°08'11"W a distance of 775.29 feet to the SW corner of Lot 2, Block 5 of HIGHLANDER CENTER-UNIT TWO; thence N89°51'53"W along the South line of said UNIT TWO a distance of 359.95 feet to the Southwest corner thereof; thence N0°08'11"E along the West line of said UNIT TWO a distance of 139.97 feet to the Southwest corner of that tract of land decided to S. Arterburn recorded on Roll 63, Page 836 and on Roll 63, Page 1475, Umatilla County Deed Records; thence N89°51'49"W along the South line of said Arterburn tract a distance of 249.98 feet to the Southwest corner thereof; thence N0°08'11"E along the West line of said Arterburn tract a distance of 159.97 feet to the Southeast corner of Campbell Drive as shown on HIGHLANDER CENTER-UNIT ONE; thence N89°52'29"W along the South line of said UNIT ONE a distance of 441.74 feet to the Southwest corner of Block 1 of said UNIT ONE; thence N0°08'41"E along the West line of said Block 1 a distance of 600.23 feet to the Northwest corner of Lot 6 of said Block 1; thence N89°53'41"W along the South line of Lot 4 of said Block 1 a distance of 28.29 feet to a point on the East right-of-way line of SE Tenth Street, (County Road No. 1241); thence S0°12'53"W along said East right-of-way line a distance of 1841.87 feet to a point on the South line of the NW 1/4 of said Section 24; thence S89°38'01"E along said South line a distance of 2636.15 feet to the point of beginning.

All being in the County of Umatilla, Oregon.
Containing 82.57 acres.

G. Dennis Edwards
G. Dennis Edwards
PLS 951

I, G. Dennis Edwards, certify that this is an exact copy of "HERMISTON PORT - UNIT ONE INCLUDING THE REPLAT OF BLOCKS 4 & 5 HIGHLANDER CENTER-UNIT TWO."
G. Dennis Edwards

Subscribed and sworn to before me this 3RD day of OCTOBER, 1989.

Robert D. Shaly
Notary Public for the
State of Oregon

My Commission Expires: 3-7-91



APPROVALS

CITY OF HERMISTON PLANNING COMMISSION

The accompanying plat is hereby approved by resolution and adopted on this 21 day of SEPTEMBER, 1989 and approval duly filed.

Reynold W. Casper
Chairman

Catharina J. Haulhouse
Secretary

HERMISTON CITY COUNCIL

The accompanying plat is hereby approved by resolution and adopted on this 25 day of SEPTEMBER, 1989 and approval duly filed.

William E. Hauffner
Mayor

HERMISTON IRRIGATION DISTRICT

The accompanying plat is hereby approved by resolution and adopted on this _____ day of _____, 1989 and approval duly filed.

C. D. Roberts
Chairman

CITY ENGINEER

Approved this 25 day of SEPTEMBER, 1989.

Patricia D. Nye
City Engineer

UMATILLA COUNTY ASSESSOR AND TAX COLLECTOR

We the Assessor and the Tax Collector of Umatilla County, Oregon, each hereby certify that we have examined the tax records relative to the kind covered by the accompanying plat, and that all monies due for estate and county taxes and assessments that could now constitute a lien on said land have been paid and we hereby approve said plat, dated this _____ day of _____, 1989.

Assessor

Tax Collector

UMATILLA COUNTY COMMISSIONERS

This is to certify the accompanying Plat is approved for filing and recording in the "Record of Town Plats" of Umatilla County, by the undersigned by its order dated this _____ day of _____, 1989.

Commissioner

Commissioner

Commissioner

UMATILLA COUNTY CLERK

Attest: I, the County of Clerk of Umatilla County, Oregon, do hereby certify that the above named were on the date of said order above specified and are now the duly qualified, elected, sworn and acting chairmen and commissioners of said county; that the signatures are the genuine signatures thereof and the seal hereto affixed is the seal of my office, dated this _____ day of _____, 1989.

County Clerk

UMATILLA COUNTY SURVEYOR

I, Umatilla County Surveyor, do hereby certify that I have examined the accompanying Plat, that it complies with the laws of the State of Oregon with reference to the filing and recording of such Plats, and I, therefore approve said Plat for the approval of the County Commissioners of Umatilla County, Oregon, dated this 5 day of December, 1989.

David H. Kline
Umatilla County Surveyor