

SURVEYOR'S STATEMENT

I, Duane I. Griffith registered land surveyor in the State of Oregon hereby certify that this plat and notes hereon or attached are a true and correct representation of the survey made in July and August, 1989 at the request of USFS Forest Service in accordance with the statutes of the State of Oregon and with the articles of my contract.

I retraced the Base Line from the S 1/4 corner of section 31, T 1 N, R 37 E, to the closing corner of sections 2 & 3, T 1 S, R 36 E. At the south 1/4 corner of section 31, I found Gradon's marked stone, which is very relative to topographic calls east & west. The BLM retraced the Base Line from the south 1/4 corner of section 35, T 1 N, R 36 E, to the west in 1983. In this retracement they set the corner to sections 2 & 3. I therefore accepted this as being on the Base Line and did not run on west to a standard corner.

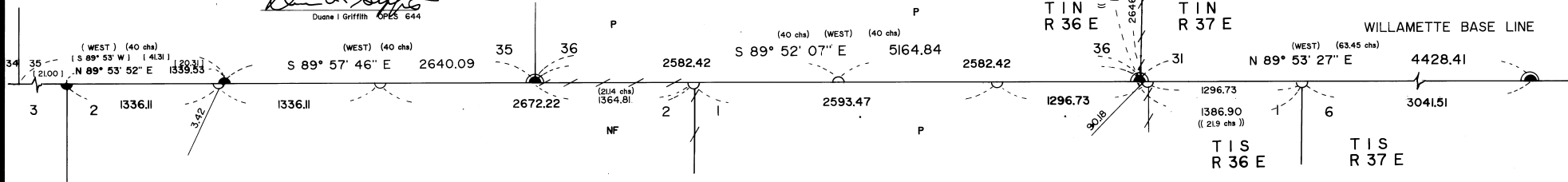
The Base Line was originally set by Davenport in 1863. In 1882 Gradon reestablished the portion I retraced. I was furnished with a copy of a letter written by William W. Glenn Chief, Branch of Cadastral Survey, for the BLM. This letter is an answer to a query by Chuck R. Malcolm, Acting Forest Engineer, Umatilla National Forest. Glenn's letter is dated Jan. 28, 1983 and states in effect, the new corners established by Gradon in 1882 will control. I based my retracement of the Base Line on Gradon's reestablished Base Line. I found Davenport's township corner, T 1 N, R 36 & 37 E. This corner was found and used by Cooper in 1881 and Gradon in 1882. I also found the corner to sections 35 & 36, T 1 N, R 36 E, set by Gradon. This position is very harmonious with the topographic call to the east.

I retraced the Range Line north from the Base Line as shown. Some of the bearings and distances deviate a lot from record, for Base and Range lines. The area is quite precipitous. From the township corner, there is a 1800 foot drop, vertically, to Bear Creek to the east. To the north there is a 2000 foot drop to the North Fork of Meacham Creek. To the west there is a 2000 foot drop to Meacham Creek. I feel this had an effect on the accuracy of the original surveys.

I set the township corner T 1 S, R 36 & 37 E, where the northerly projection of the east line of section 1 from the SE corner through the E 1/4 corner intersects the Base Line, as hereinbefore described. This position is harmonious with topo calls east, and old blaze line from the south. I also found a 12" tamarack log loose on the ground approximately 15 feet east with blaze and faint scribes. There is a 2 or 3 chain error along the Base Line in this area. This would adversely effect a proportion of this corner.

I find no other unusual conditions.

Duane I. Griffith
Duane I. Griffith O.P.E.S. 644



HISTORY OF SURVEYS

The Base Line was originally run by Timothy W. Davenport in 1863, contract number 102.

The Base Line was reestablished and T 1 S, R 36 E was subdivided by Herman D. Gradon in 1882, contract no. 452.

The Range Line through T 1 S & T 1 N, between R 36 & 37 E, was originally run by Jacob C. Cooper in 1881, cont. no. 397.

The Range Line between R 36 & 37 East in T 1 S was retraced by Henry Meidrum in 1882, contract number 450 in which he set new corners for T 1 S, R 37 E.

The E & W 1/4 corners and the SE & SW section corners of section 1 were perpetuated by Douglas Ferguson in 1972.

The S 1/4 corner of section 35, T 1 N, R 36 E; and the NW corner of section 2, T 1 S, R 36 E, were perpetuated by Lawrence D. Holmes, Bureau of Land Management, in 1983. Dependent resurvey under Group no. 1184.

NATIONAL FOREST LANDS

T 1 N, R 37 E
Section 30, The S 1/2 of the SW 1/4.
Section 31, All.

T 1 S, R 36 E
Section 1 The E 1/2 of the NE 1/4
The SW 1/4 of the SW 1/4.
Section 2 The E 1/2 of the E 1/2.
Section 12 The NW 1/4.

BASIS OF BEARING

Solar observations taken at a point 300 feet east of the SE corner of Section 1, T 1 S, R 36 E, WM.

Date: July 30, 1989
Latitude: 45° 30' 04"
Longitude: 118° 14' 20"
Time: 16:43:00 (GCT)
Magnetic Declination: 17° East

LEGEND

- Found brass cap monument, set by others see history of surveys.
- ⊙ Found original GLO Survey evidence and set 2-1/2" X 30" Aluminum monument, position determined by survey.
- Set 2-1/2" X 30" Aluminum monument at position determined by survey.
- National Forest boundary posted to standard.
- P Privately owned land
- NF National Forest land
- () Record information from GLO contract no. 452, by Herman D. Gradon
- (()) Record information from GLO contract no. 397, by Jacob C. Cooper
- [] Record information from BLM dependent resurvey by Lawrence D. Holmes in 1983 under Group No. 1184

The information within these boxes is for U.S. Forest Service record keeping purposes only

PROJECT NAME
Spring Cadastral Survey
CONTRACT NUMBER
00-04R3-B-66

Examined and accepted for the U.S. Forest Service this 10th day of October, 1989.

Dennis F. Hayward C.O.R.

FIELD BOOKS
Traverse Book numbers 1, 2, 3, and 4
Remonumentation Book Numbers 1, and 2

I certify that this survey was performed at the request of the Umatilla National Forest.

NATIONAL FOREST SUPERVISOR

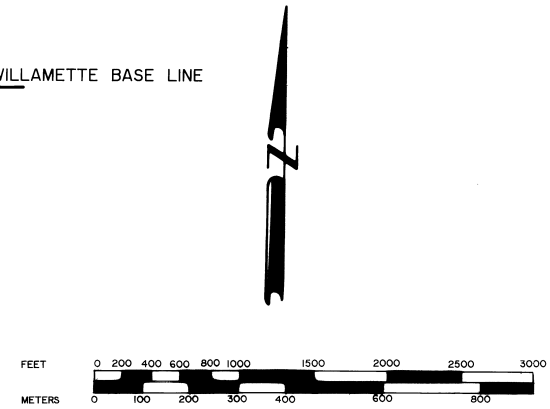
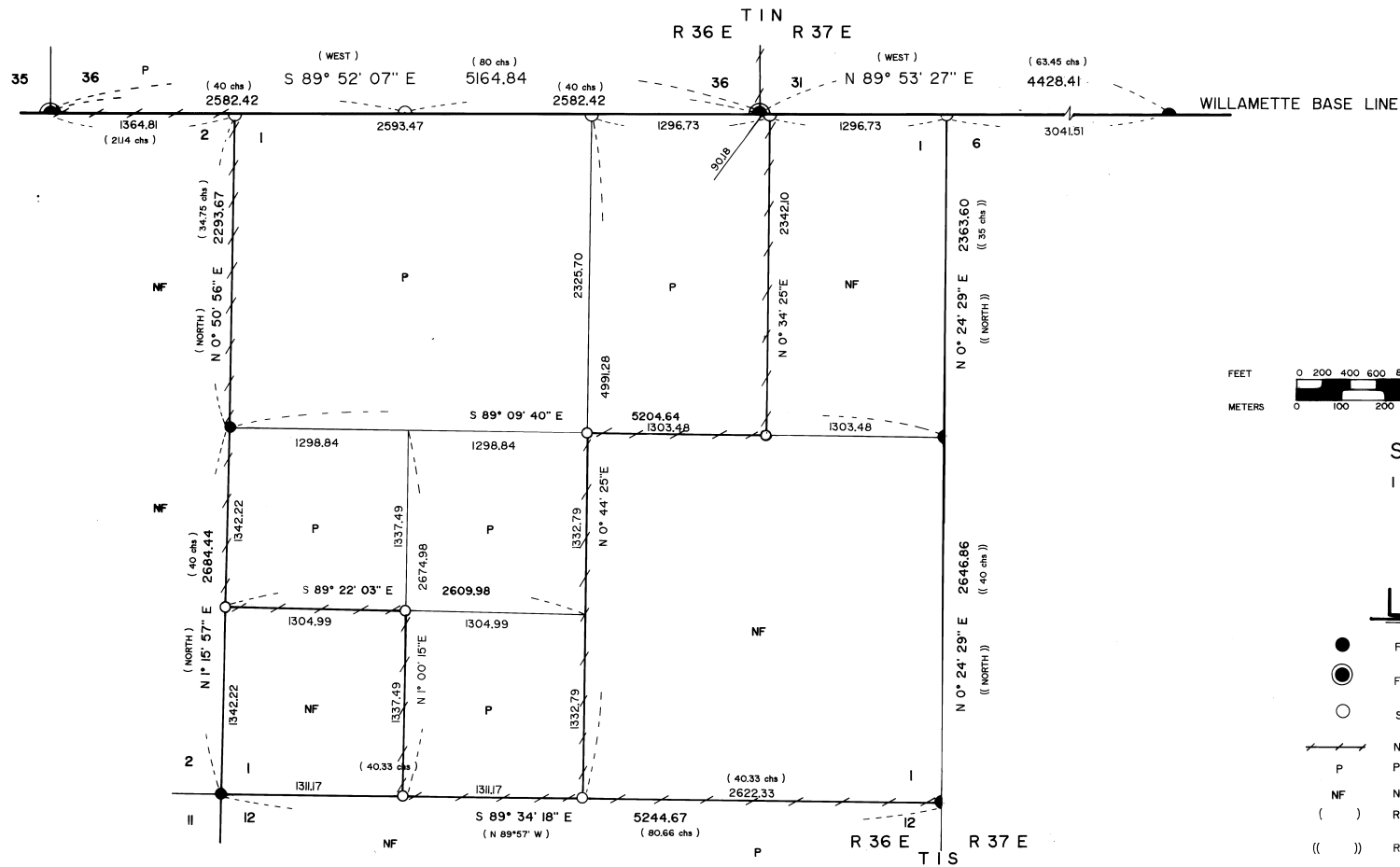
[Signature] DATE 10/10/89

Scale: 1" = 600'
1 Meter = 3.2808333 Feet

RECEIVED BY
Umatilla County Surveyor
Date 10-89
Rec'd by [Signature]
No. 89-101-B

Sheet 1 of 2 Sheets

BAGETT - GRIFFITH & ASSOCIATES LaGrande, Oregon Map of Survey Base Line in the area of R 36 & 37 E WM Range Line between R 36 & 37 E in the area of the Base Line. Subdivision of Section 1 T 1 S, R 36 E WM UMATILLA COUNTY, OREGON		
SURVEYED FOR	UMATILLA NATIONAL FOREST	
SURVEYED BY	d i g	788-89
Scale: 1" = 600'	Drawn by: d i g	9-89



LEGEND

- Found brass cap monument, set by others, see history of surveys.
- ⊙ Found original GLO Survey evidence and set 2-1/2" X 30" Aluminum monument.
- Set 2-1/2" X 30" Aluminum monument at position determined by survey.
- National Forest boundary posted to standard.
- P Privately owned land
- NF National Forest land.
- () Record information from GLO contract no. 452, by Herman D. Gradon
- (()) Record information from GLO contract no. 397, by Jacob C. Cooper
- [] Record information from BLM dependent resurvey by Lawrence D. Holmes in 1983 under Group No. 1184

NATIONAL FOREST LANDS

T 1 N R 37 E
 Section 30,
 Section 31,
 The S 1/2 of the SW 1/4.
 All.

T 1 S R 36 E
 Section 1,
 Section 2,
 Section 12,
 The E 1/2 of the NE 1/4,
 The SW 1/4 of the SW 1/4,
 The SE 1/4,
 The E 1/2 of the E 1/2,
 The NW 1/4.



Sheet 2 of 2 Sheets

The information within these boxes is for U.S. Forest Service record keeping purposes only

PROJECT NAME Spring Cadastral Survey CONTRACT NUMBER 00-04R3-8-66 FIELD BOOKS Traverse Book numbers 1, 2, 3, and 4. Remonumentation Book Numbers 1, and 2.	Examined and accepted for the U.S. Forest Service this 10th day of October, 1989. <i>Dennis L. Hayford</i> C.O.R. I certify that this survey was performed at the request of the Umatilla National Forest. NATIONAL FOREST SUPERVISOR <i>[Signature]</i> SIGNATURE DATE 10/10/89
--	---

RECEIVED BY
 Umatilla County Surveyor
 Date: 10/10/89
 Red'd by: [Signature]
 No. 397-101-B

BAGETT - GRIFFITH & ASSOCIATES LaGrande, Oregon Map of Survey Base Line in the area of R 36 & 37 E WM Range Line between R 36 & 37 E in the area of the Base Line. Subdivision of Section 1, T 1 S R 36 E WM UMATILLA COUNTY, OREGON	
SURVEYED FOR	UMATILLA NATIONAL FOREST
SURVEYED BY	dig
Scale: 1" = 600'	Drawn by: dig
	9-89