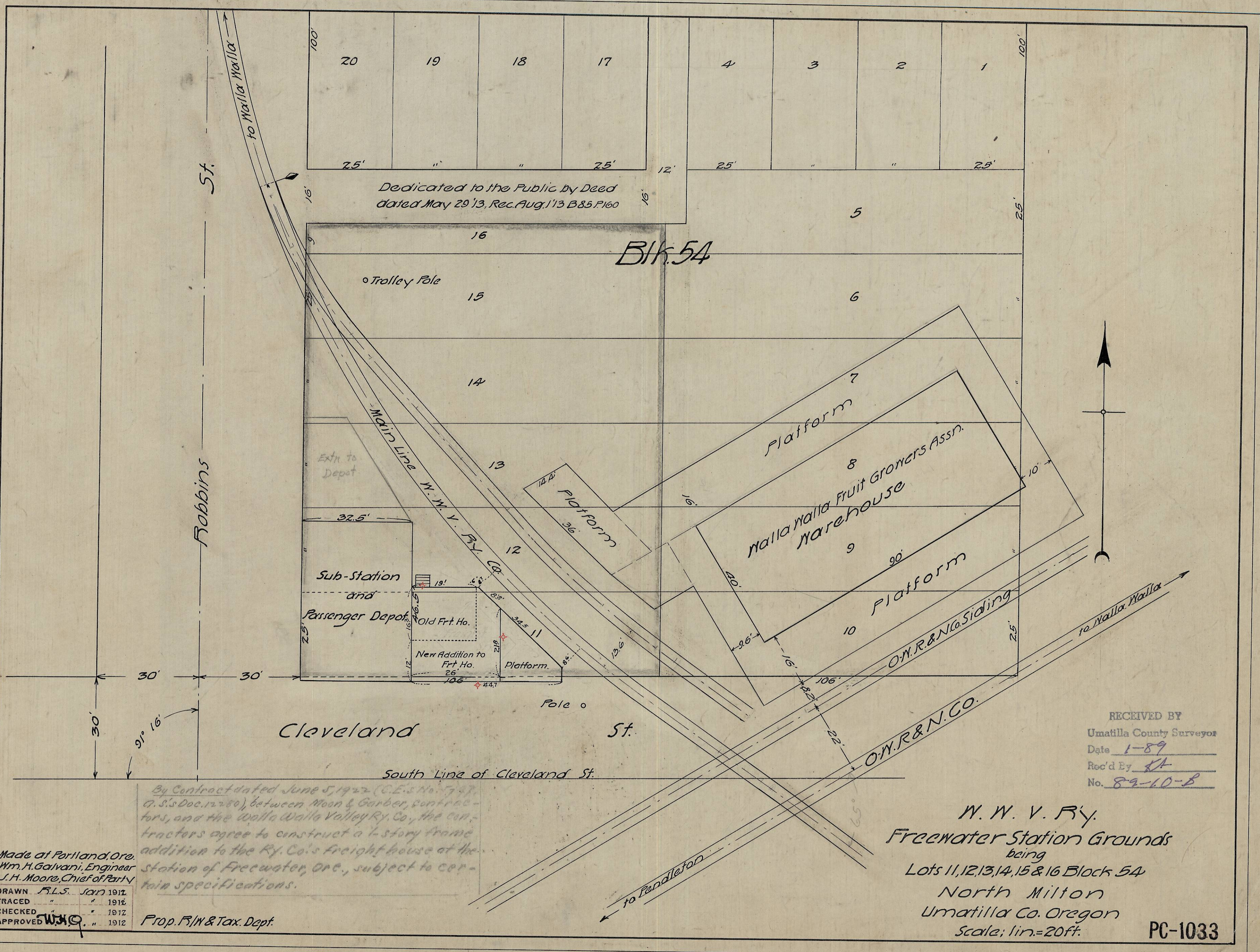


2-233



Made at Portland, Ore.
 Wm. H. Galvani, Engineer
 J. H. Moore, Chief of Party

DRAWN	R.L.S.	Jan	1912
TRACED	"	"	1912
CHECKED	"	"	1912
APPROVED	J.W.M.	"	1912

By Contract dated June 5, 1912 (C.E.S. No. 747, O.S.S. Doc. 12280), between Moon & Garber, contractors, and the Walla Walla Valley Ry. Co., the contractors agree to construct a 1-story frame addition to the Ry. Co.'s freight house at the station of Freewater, Ore., subject to certain specifications.

Prop. B/M & Tax. Dept.

W. W. V. Ry.
 Freewater Station Grounds
 being
 Lots 11, 12, 13, 14, 15 & 16 Block 54
 North Milton
 Umatilla Co. Oregon
 Scale: 1 in. = 20 ft.

RECEIVED BY
 Umatilla County Surveyor
 Date 1-89
 Rec'd By JH
 No. 89-10-B

PC-1033