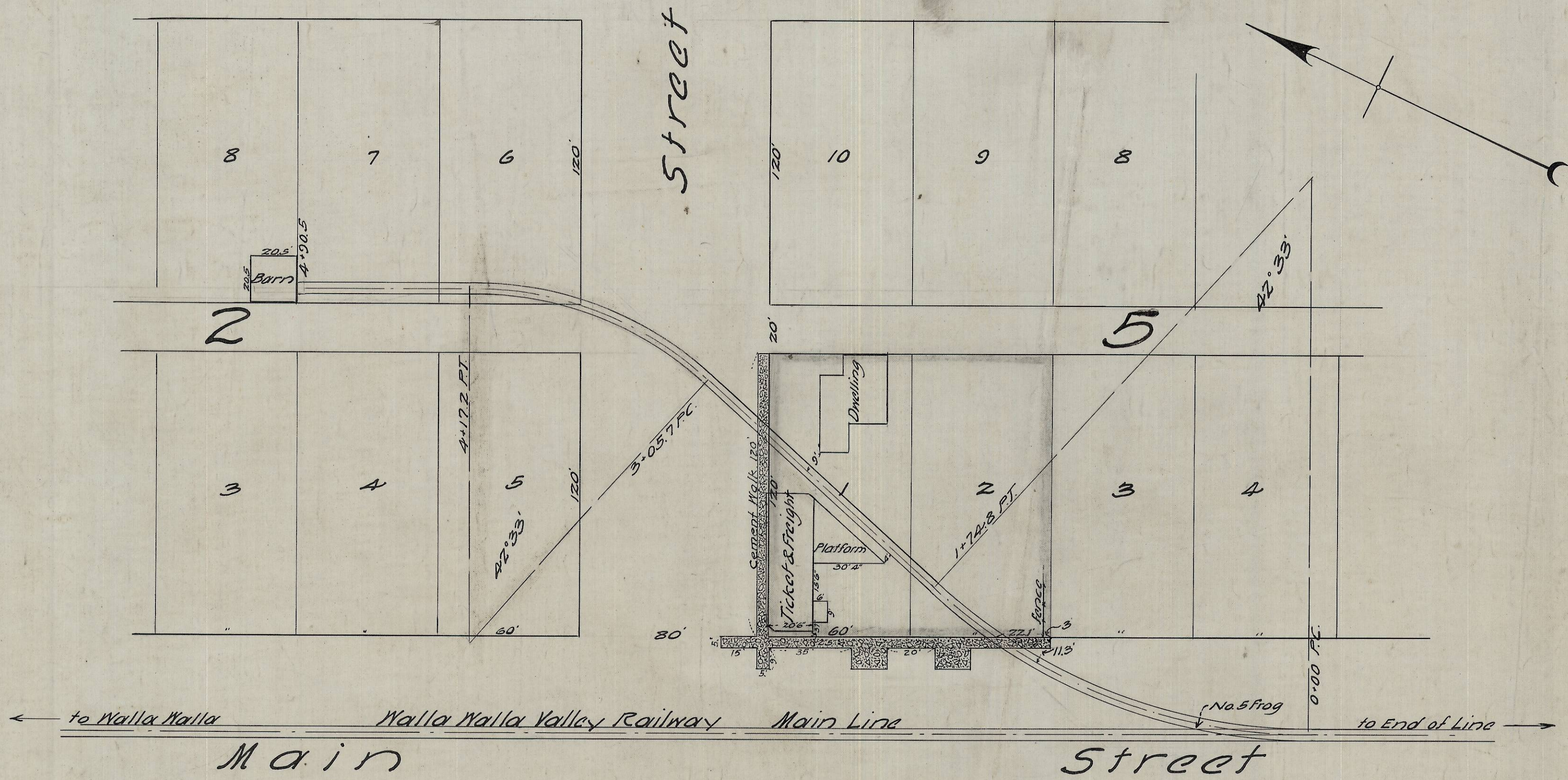


2-000



Made at Portland, Ore.
 Wm. H. Galvani, Engineer
 H. F. Parsons, Chief of Party

DRAWN	R.L.S.	NOV 1912
TRACED	"	" 19 "
CHECKED	"	" 19 "
APPROVED	Wm. H. G.	" 19 "

Prop. R/W & Tax Dept.

Second

RECEIVED BY
 Umatilla County Surveyor
 Date 1889
 Rec'd By JA
 No. 8908-B

W.W.V.Ry.
 Milton Station Grounds
 being
 lots 1 and 2 Block 5
 to the
 Original Town of Milton
 Umatilla County, Oregon

PACIFIC POWER & LIGHT COMPANY
PORTLAND, OREGON

SCALE 1 inch = 40 feet

PC-1078

Rev. 12-19-2