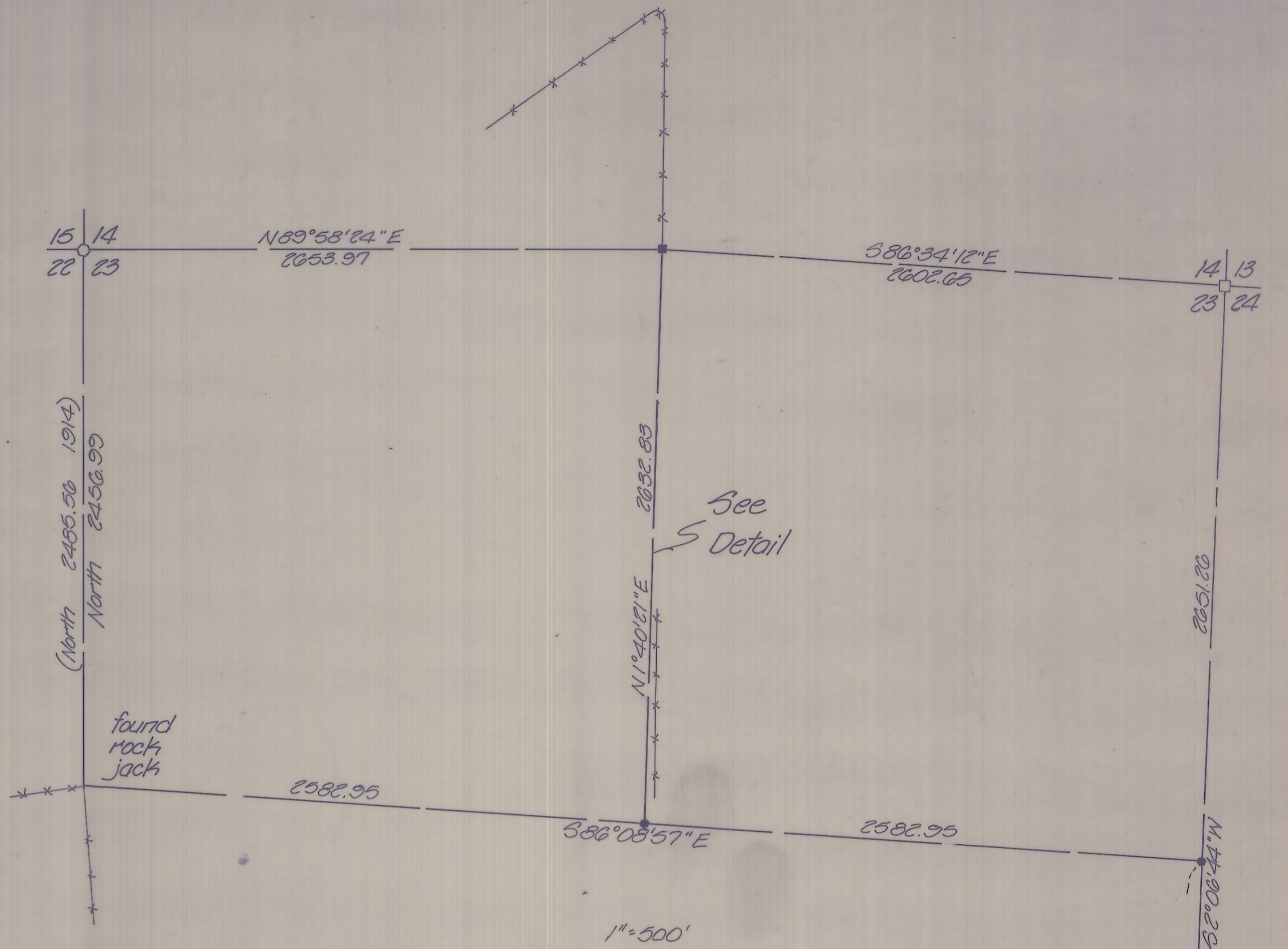
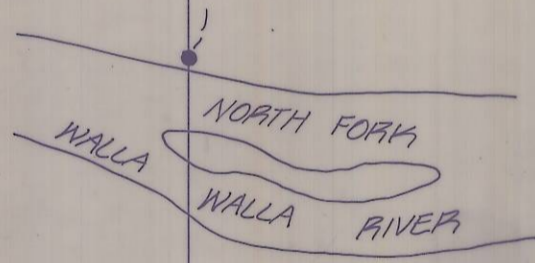


N/4 Sec 23

North-South centerline 7
N1°40'51"E

N1°40'51"E

461.06



See Detail

1"=500'

NARRATIVE:

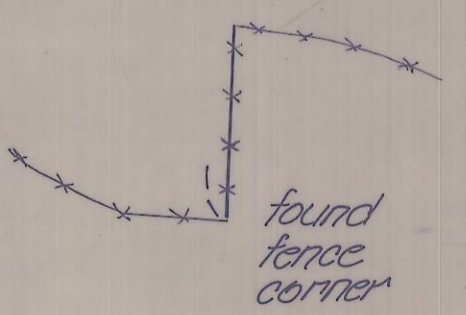
The purpose of this survey was to establish the North-South centerline of Section 23, Township 5 North, Range 36 East, W.M., between County Flood No. 440 on the North and the North Fork Walla Walla River on the South.

The Northwest corner of the section is a 1/2" rebar with a 1" plastic cap stamped L3 934, Co. No. 82-38-A. The North quarter corner is an old stake in a North-South fence line. The bearing and distance from the Northwest corner agree with the original GLO notes and was accepted as the location for alignment. The Northeast corner is a rock mound on North-South fence line. This is an old fence line that has fallen down and consists of rock mounds at the old fence jack locations and strands of wire. The corner location is a rock mound twice as large as the other mounds. The distance from this point to the North quarter corner does not match the called for distance, however, in this area the quarter corners were oftentimes "stubbed" in from the section corner to the West and not proportioned as required. The Southeast corner is a fence corner that has been previously verified and accepted as the section corner as shown on Co. Surveyor No. 84-57-B. The East quarter corner was proportioned in half way between the Northeast and Southeast corners after nothing was found at the location.

The South quarter corner and the Southwest section corner were searched for and not found. The West quarter corner is a stone marked with "x" in a rock jack. The East-West centerline of the section was established between the West and East quarter corners. The center of the Section was established half way between the corners, this location fits the North-South centerline bearing between the West line and East line of the section, between than a short fence North of the East-West centerline. The centerline of the traveled roadway was used to establish County Flood No. 440.

Bearings are based upon the West line of the section being North between the quarter corner and section corner.

- denotes 1/2" rebar with 1" plastic cap stamped L3 934, Co. No. 82-38-A
- denotes used stone mound
- denotes proportioned corner, nothing set
- denotes old stake in North-South fence
- denotes set 3/8" x 30" iron pin with aluminum cap stamped PL3 933



DETAIL
1"=100'

KRUMBEIN ENGINEERING LTD. ENGINEERS - SURVEYORS - PLANNERS 361 S.E. Second Pendleton, Oregon	Scale AS SHOWN	Dwn. By MLD	Drng. No. 85-19C	Revision 1
	Date 3-19-85	Ckd. By DHP	Job No. 85-03	Revision 2
Survey for BILL GALBREATH Makinson Estate N/4, Sec. 23, T5N, R36E, W.M.		REGISTERED PROFESSIONAL LAND SURVEYOR OREGON JULY 12, 1978 DAVID H. KRUMBEIN 933	RECEIVED BY Umatilla County Surveyor Date <u>10-14-85</u> Rec'd By <u>KA</u> No. <u>85-148-B</u>	