



SCALE: 1" = 1000'

REGISTERED PROFESSIONAL LAND SURVEYOR

William R. Wells

OREGON JULY 22, 1977 WILLIAM R. WELLS 1106

WALLULIS PROJECT NO: 82-106 AGENCY PROJECT NO: 12-07

PROJECT: UMATILLA RESERVATION HOUSING AUTHORITY MAP SHOWING MONUMENTS FOUND DURING SURVEYS IN SECTIONS 2, 3, 9, 10, 11, & 12 TOWNSHIP 2 NORTH, RANGE 33 EAST, W.M. UMATILLA COUNTY, OREGON.

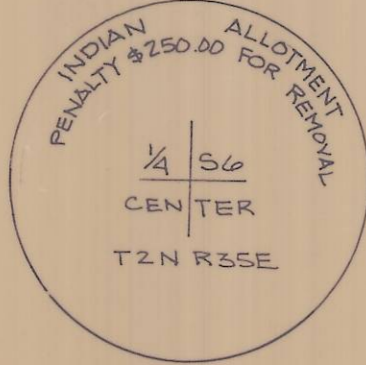
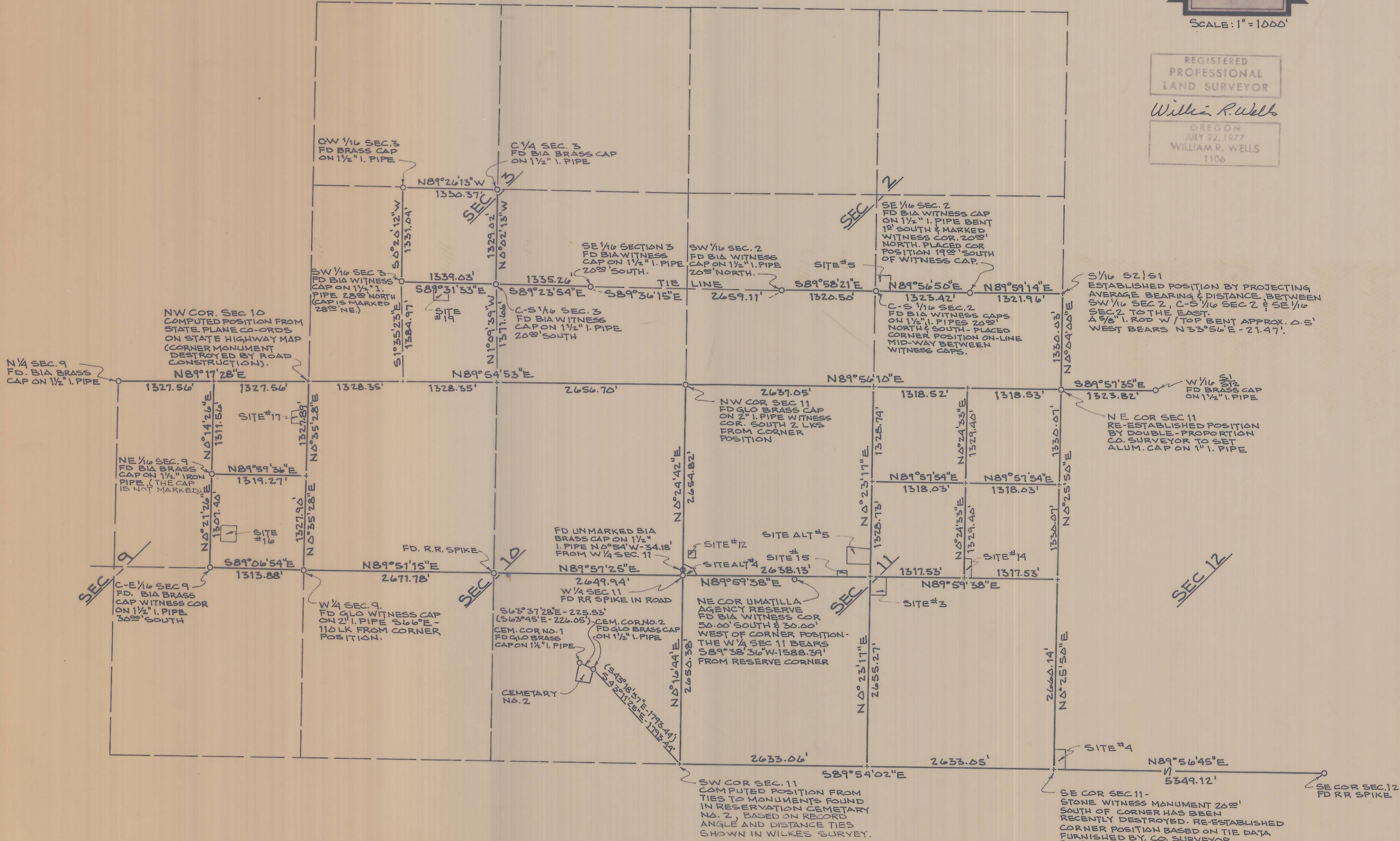
WALLULIS & ASSOCIATES, INC. ENGINEERING & PLANNING

PENDLETON, OREGON 97801 503 - 276 - 1598

SCALE: 1" = 1000' DATE: 8-20-82 DES BY: DR BY: WRW CK BY: WRW

TITLE: REVISIONS

DRAWING RECEIVED BY Umatilla County Surveyor Date 1982 Rec'd By BLS No. 82-60-B SHEET 1 OF 1



TYPICAL BIA BRASS CAP MARKINGS

LEGEND & NOTES (oo)-DISTANCES OF GLO RECORD. o - MONUMENTS FOUND AS NOTED. BEARINGS ARE TRUE BASED ON TIES TO USC & GS STA "MISSION AND ITS AZIMUTH MARK. SEE ATTACHED NARRATIVE OF SURVEY. FOR ADDITION INFORMATION SEE INDIVIDUAL HOMESITE SURVEYS.

NARRATIVE OF SURVEY

The survey involved location of a number of homesites near Mission, Oregon, for the Umatilla Reservation Housing Authority. The purpose of this map and narrative is to show the location of corners found, re-established or established which are not shown on the individual homesite survey maps. It should be noted that there are a number of monuments shown on the map which were not actually needed during our surveys but were shown only for general information. It should also be understood that there are a number of 1/16, 1/4 and Section Corners within the boundaries of the map which were not needed for our surveys and were not searched for - these monuments could be in place.

Around 1920, brass capped iron pipe monuments were set for many of the 1/16, 1/4 and Section Corners around Mission, Oregon. To our knowledge, there is no usable written record of where the monuments were set, how they were set, or by whom they were set. The vault at the BIA headquarters in Mission contains some old handwritten field books which I suspect are some of the field notes for the establishment of all of the iron pipes with brass caps. These old notes are not clear and in many cases will show only a rough sketch of a section with some circles drawn on the sketch (the circles may represent monuments set). Surveyors working on the Umatilla Indian Reservation should be aware that there are many monuments actually in the ground which are not shown in the County Surveyor's Office records. See the map of survey for diagram of a typical unrecorded monument.

The Southwest 1/16 of Section 3 was monumented with a BIA brass capped iron pipe which was stamped "Witness Corner 28.00' N.E.". This witness monument is located at the South end of a North-South fence which runs North 1,331 feet to the C-W 1/16 Section 3. I concluded that the "N.E." marked on the witness cap was a mis-mark and established the corner position 28.00 feet South of the witness corner. Note on the map that the distance between the established corner position of the SW 1/16 Section 3 located South of the witness cap and the C-S 1/16 Section 3 matches the distance between the C-S 1/16 Section 3 and the SE 1/16 Section 3 within 4 feet.

Measurements were made with a 1 second theodilite and infra-red distance measuring equipment. Bearings are based on ties to USG and GS Station "Mission" and its azimuth mark.

REGISTERED
PROFESSIONAL
LAND SURVEYOR

William R. Wells

OREGON
JULY 22, 1977
WILLIAM R. WELLS
1106