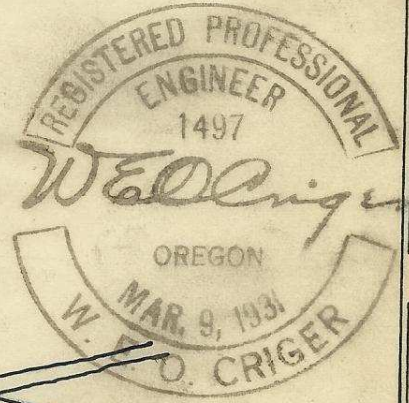
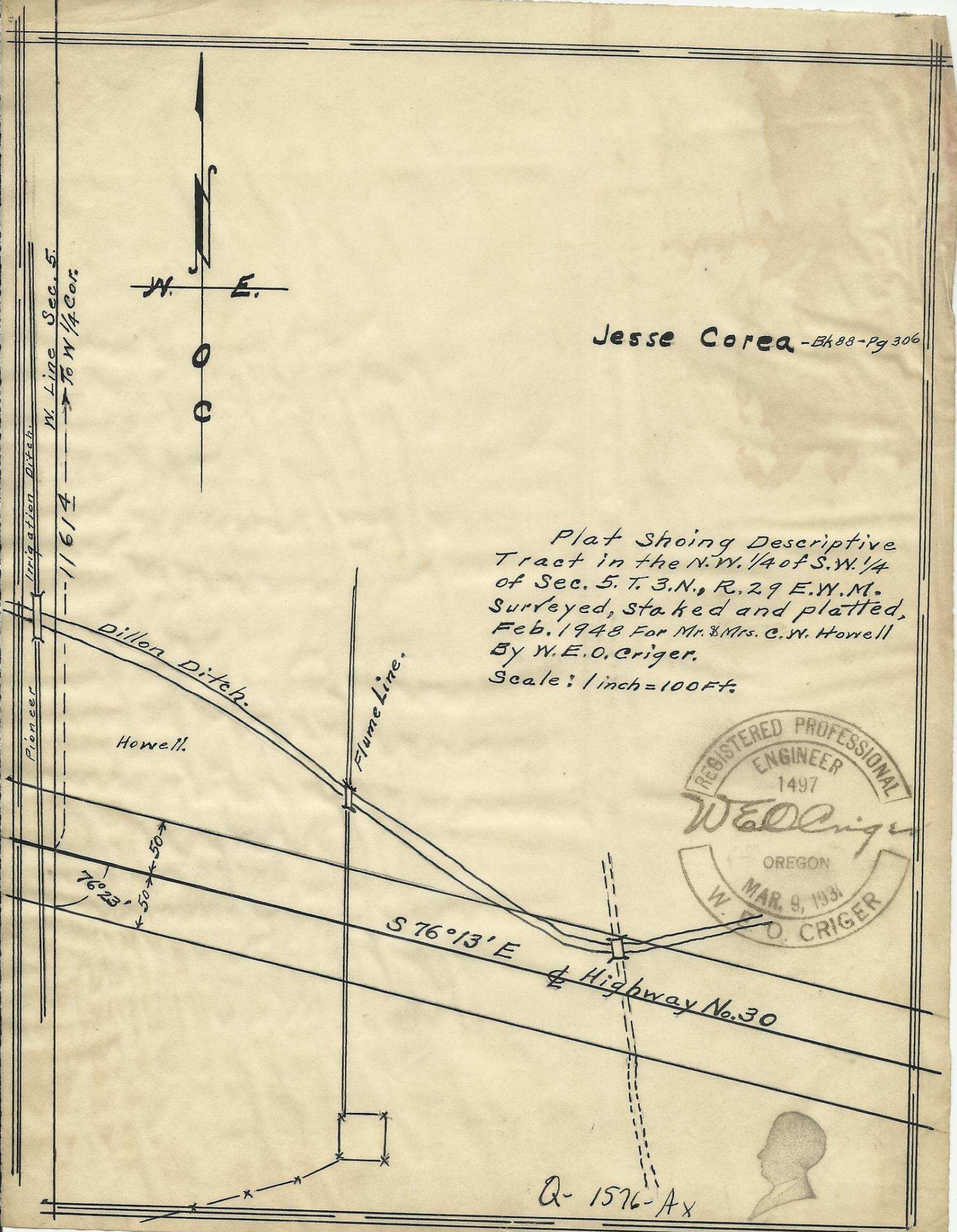


Jesse Corea - Bk 88 - Pg 306

Plat Shoing Descriptive Tract in the N.W. 1/4 of S.W. 1/4 of Sec. 5, T. 3. N., R. 29 E. W. M. Surveyed, staked and platted, Feb. 1948 For Mr. & Mrs. C. W. Howell By W. E. O. Criger. Scale: 1 inch = 100 ft.



Q-1576-Ax

