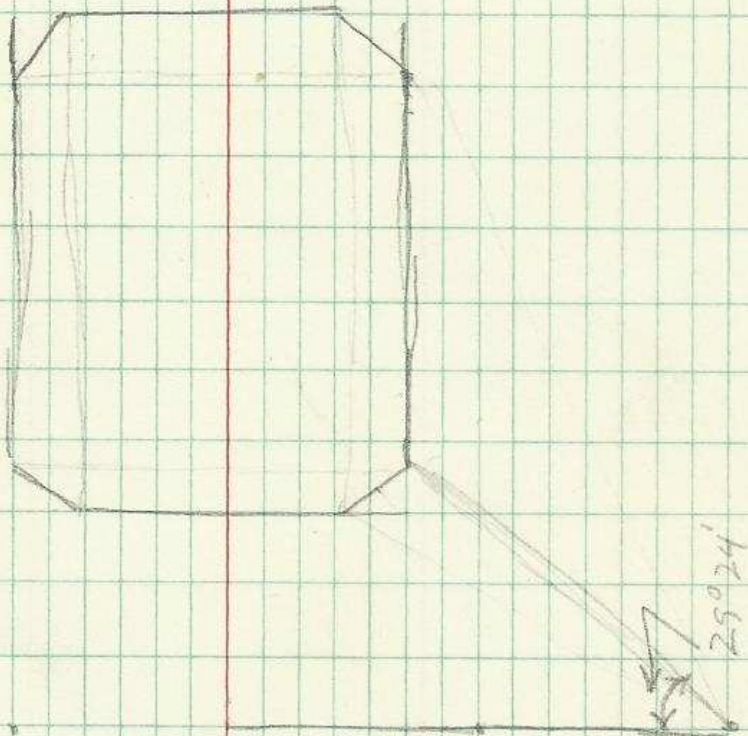


Kerr-Gifford Co

Mill Location

Helix

Oregon

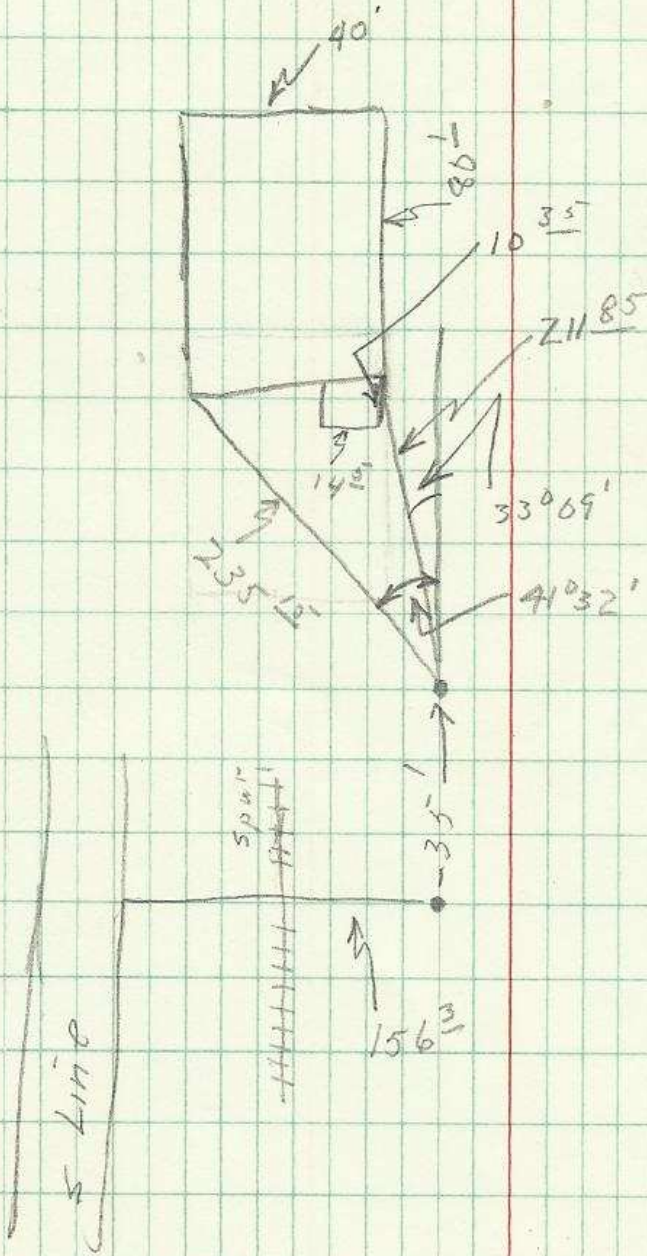


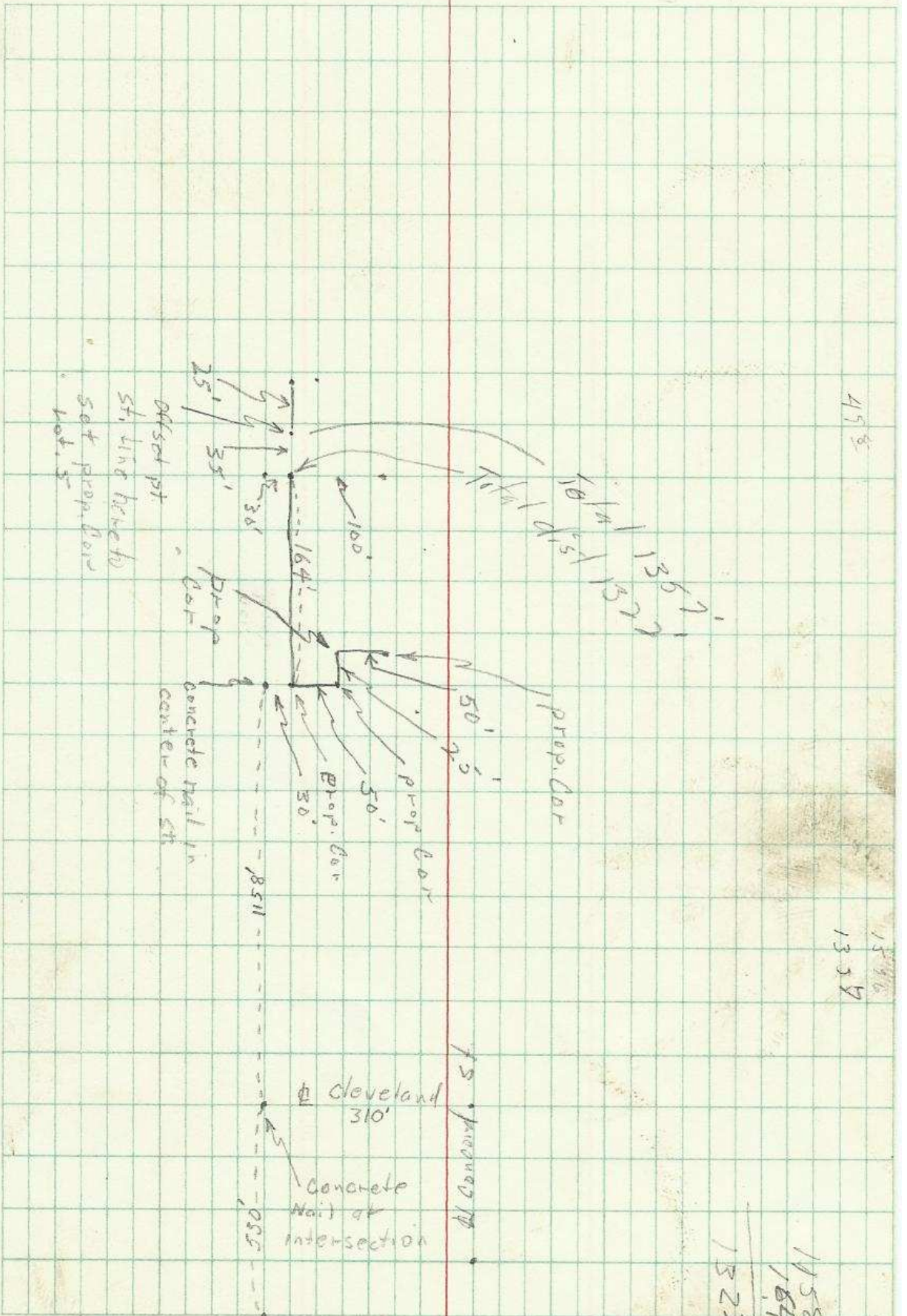
S. 2

T4N - R. 33E.

S 89° 34' W

Q-1350-A*



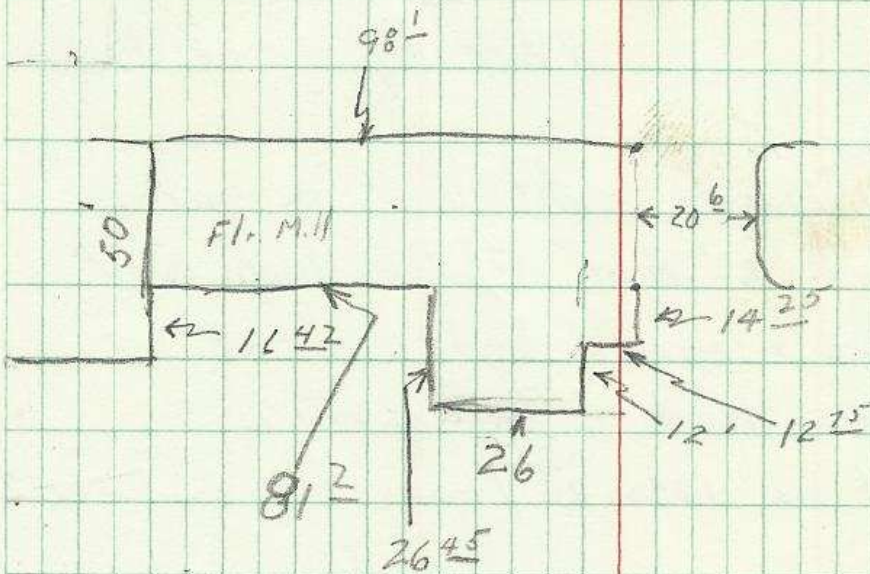
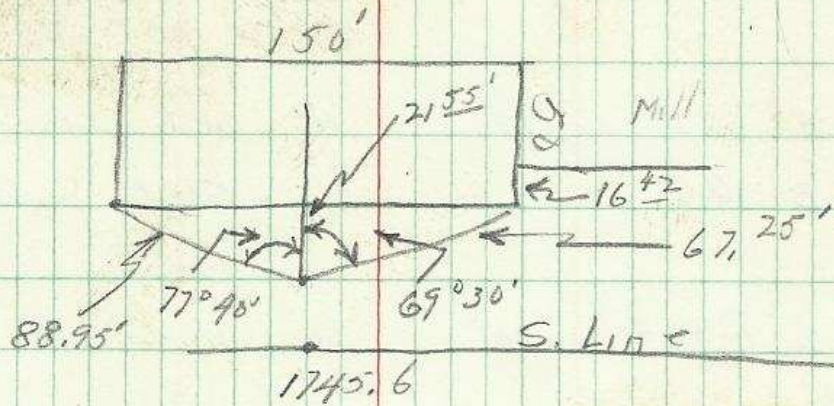


1300
1200

498

1596
1308

1158
164
1322



Prop Survey For. Kerr-Gifford Co.

Sta	Dist.	H. Angle	Btg	
A 1357				Btg of Backsight E and W
" 1.	105'	90°	N	
2	280	90°	N	
π 2				
A	25'	90°	W	set prop cor (iron pin)
B	60'	"	"	set prop cor (iron pin)
π 1.				
a.	236 ³ / ₄ '	90°	W	line hit into
π 1596				
1	149.6		W	
π 1745.6	30'	90°	N	set iron pin prop cor

π at a point on the former main line
 turned angle 90° from Tan. at the
 200' W Westerly. set Hub

π above hub. sight on on prop cor
 which is 30' N of 1745.6 hub. set
 straddles & made inter section
 of sec line & RR RW
 This pt is 1795.4' from S¹/₄ cor. sec 2

From S 1/4 cor sec 2

Set Temp. pt.

" " "

159.6
149.6
<hr/>
1745.6

1745.6
<u>49.8</u>
<hr/>
1795.4

at intersection of RW line

concrete Bldg. Dist to cor is 239'

From S 1/4 cor S. 2

This point inter-sects RR RW

DIETZGEN NO. 384-3

