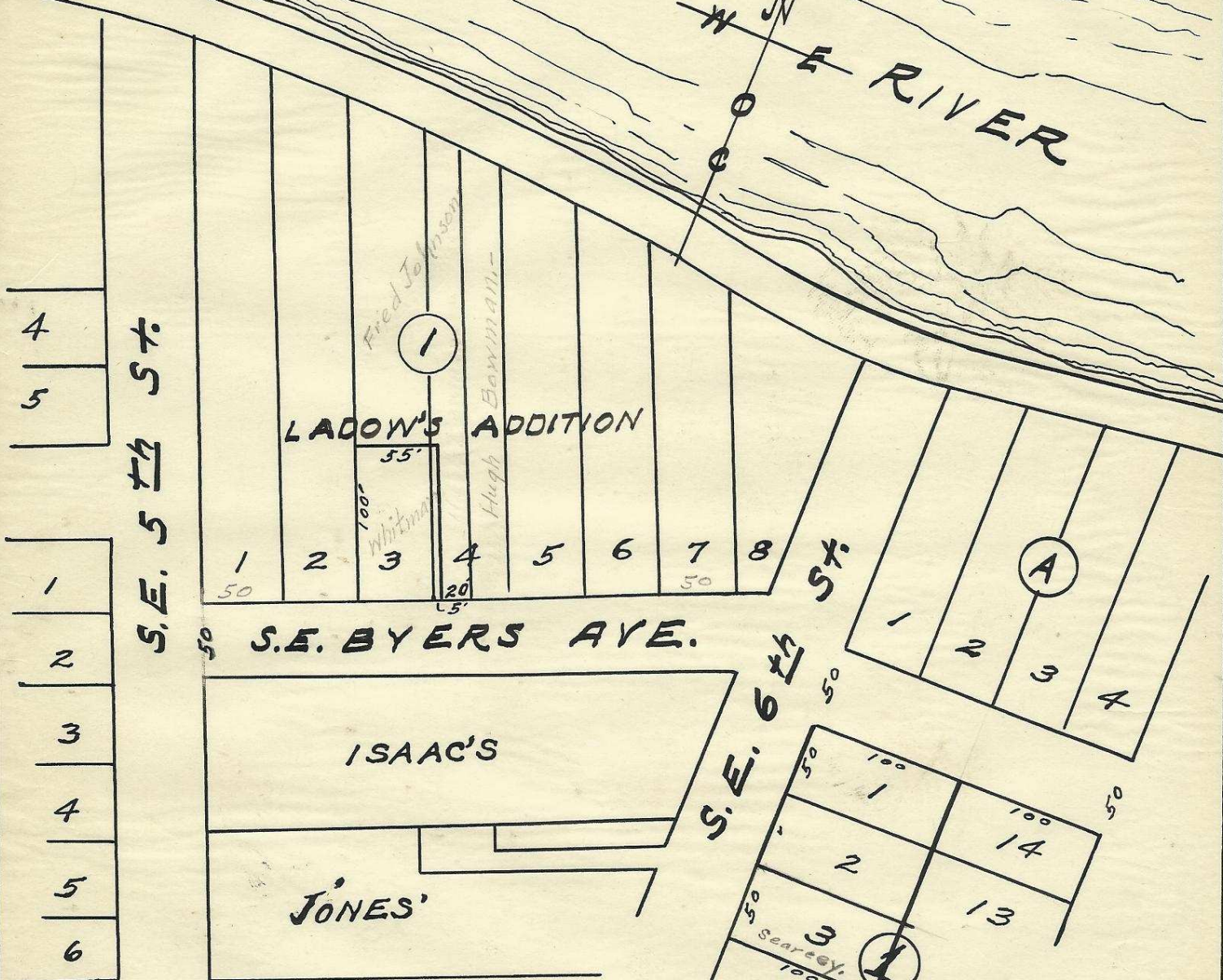


UMATI LLA

W
C
O
O
R
I
V
E
R



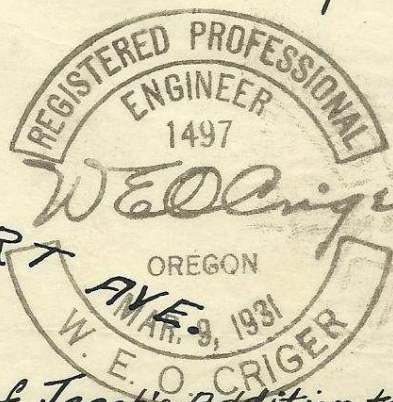
- 4
- 5
- 1
- 2
- 3
- 4
- 5
- 6

S.E. 5th St.

S.E. BYERS AVE.

S.E. 6th St.

S.E. COURT AVE.



Plat of Block 1 of
 LaDon's Addition to
 the town, now City of
 Pendleton, Oregon.
 Scale: 1 inch = 100 Ft.
 Surveyed, Staked, and Platted,
 April - 1948.
 By W. E. O. Criger.

T2N32 200
 Also Part of Block 1 of Jacobs' Addition to Jacobs' Add - Oct. 1949 - W.E.C.

Q-1309-Ax

