

Q-857-Ax

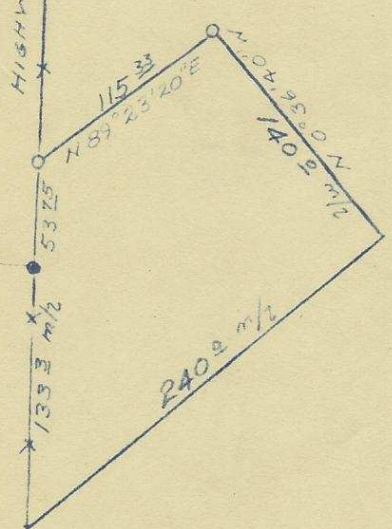
571+84.94 P.T.

578+49.39 P.S.

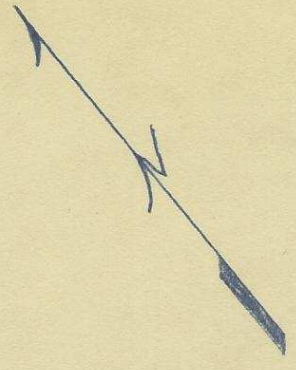
Revised Highway # 395

375' SPIRAL
S = 2° 45.8'
Q = 0.4

HIGHWAY R/W
664.45
54° 14' 05" W



E-W 4 SEC. 3 R



LEGEND

- ————— IP Found
- ————— IP Set

SURVEY	
for	
BILL BOWERS	
NW # SEC. 3	
TWN 1 S, R 32 EWM	
Scale: 1"=100	5-21-58
STANLEY G WALLULIS	
CONSULTING ENGINEER	
Pendleton	Oregon

original

1145