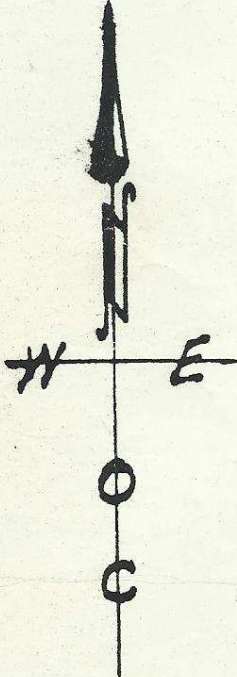


Sec. 20 -  
Sec. 21 -

20.25 CH = 1336.5'



Q-6438-A

9.13 ch. = 602.58 Ft.

299.59

302.99

90.000'

150'

Tax 3-B

276.19

236.19

40'

258.81

218.81

60'

259.5'

L.V. Corr.

Tax-3

204.61

165.5

20'

1452

1" I.P. 1/4  
3/4"  
1" I.P. 1/2

Tax 3-A

North - 289.3'

N. 10° 08' E - 188.0'

153.05

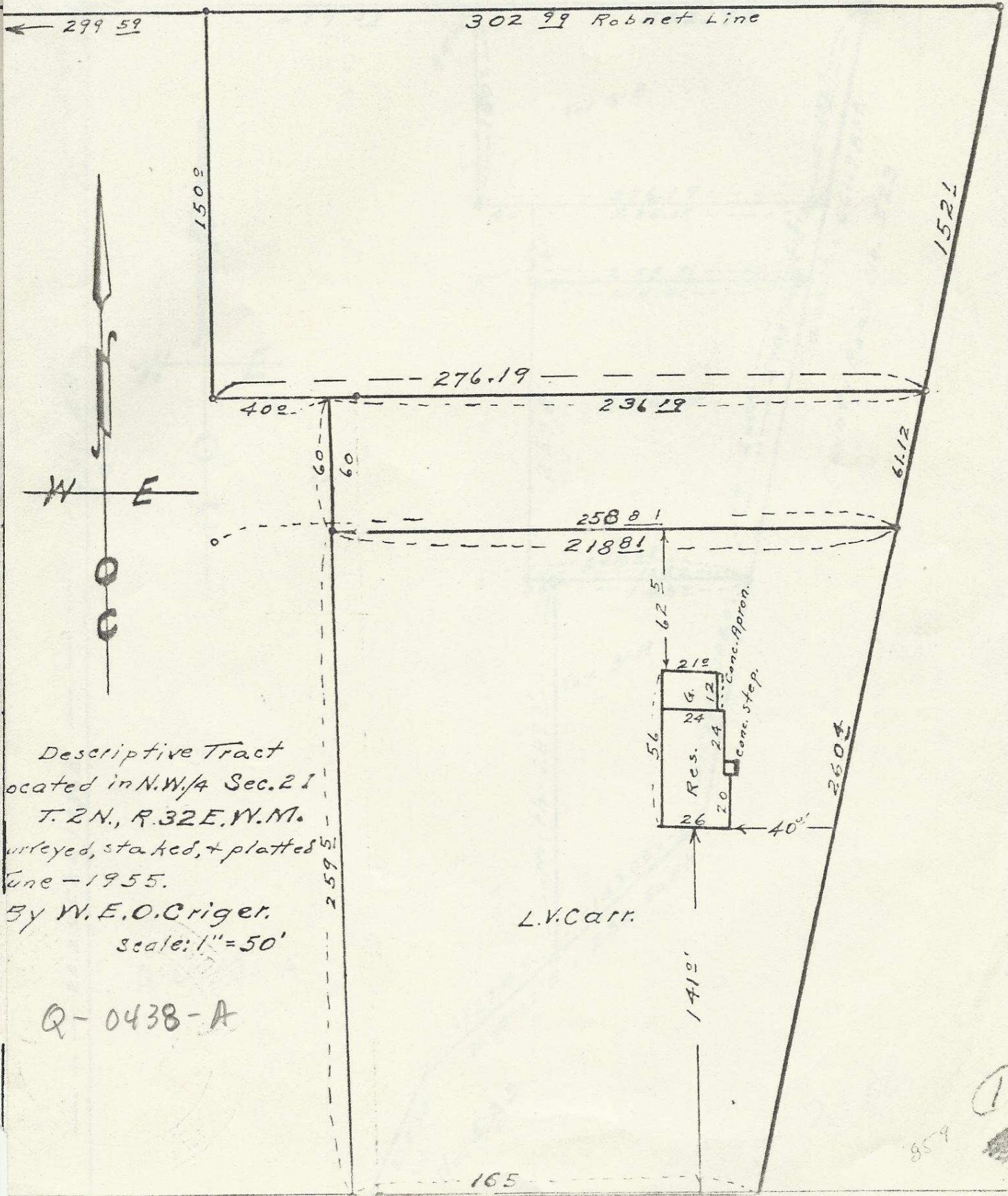
280.50 Ft.

305.50'  
4.63 CH

No. 523

10.03 ch. = 661.98 Ft.  
County Road No. 523

21BB



Descriptive Tract  
 located in N.W. 1/4 Sec. 21  
 T. 2 N., R. 32 E., W. M.  
 Surveyed, staked, & platted  
 June - 1955.  
 By W. E. O. Criger.  
 scale: 1" = 50'

L.V. Carr.

Q-0438-A

859