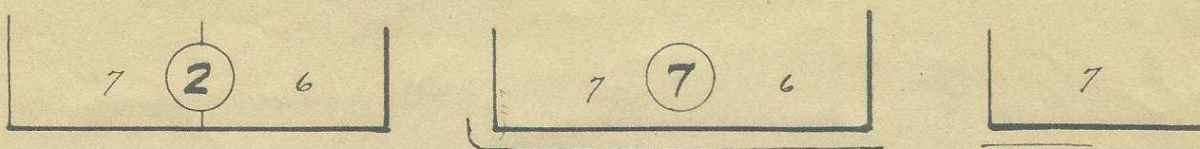
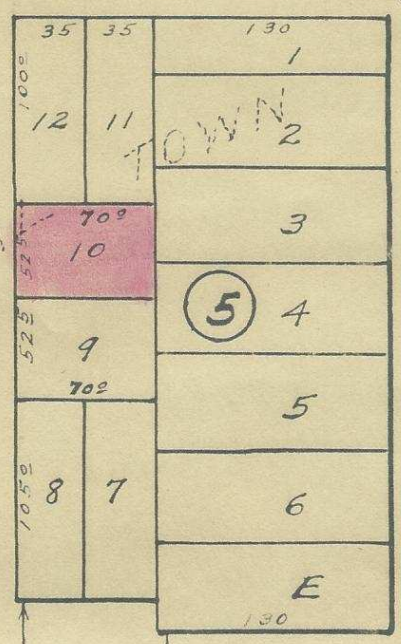
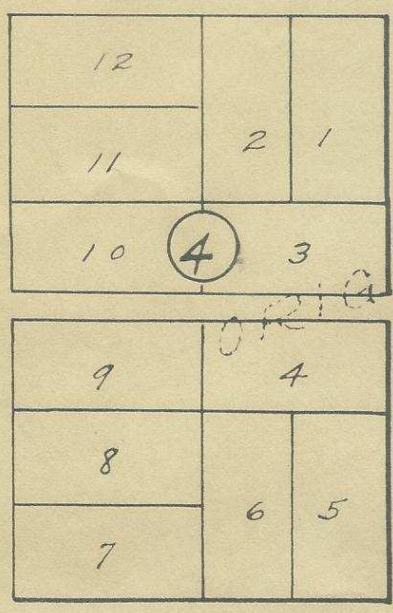


Q-333-AX 0857

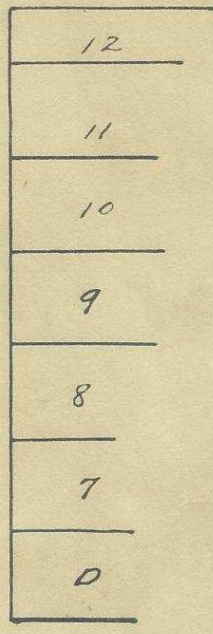


S. E. COURT ST.

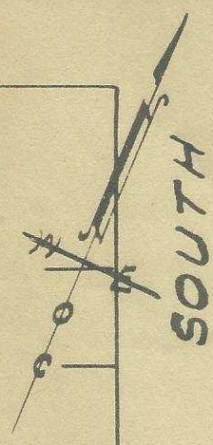
MAIN ST.



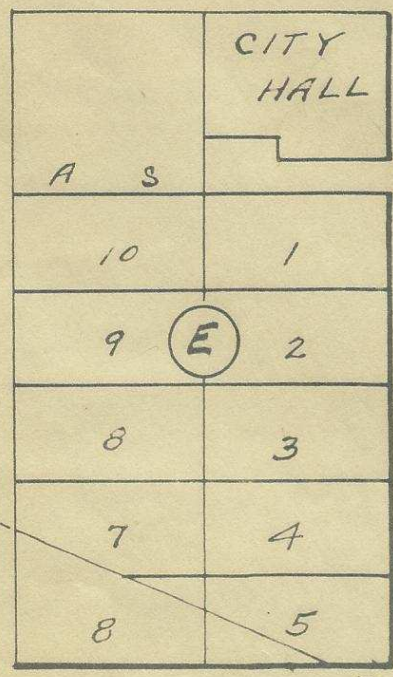
S. E. SECOND ST.



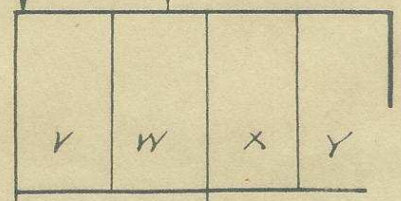
S. E. DORION ST.



SOUTH

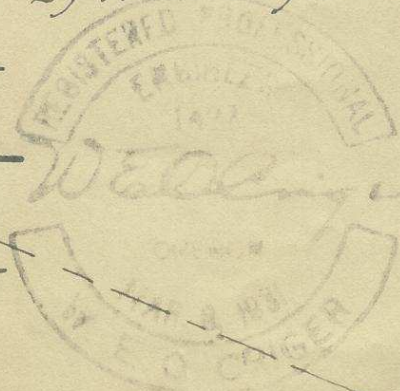


S. E. FIRST ST.



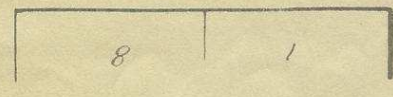
(D)

Plat Showing
 Block 5 of Original Town
 of Pendleton, Oregon.
 Scale: 1 inch = 100 Feet.
 Surveyed and platted - 10/27/1947
 By W. E. O. Criger - Ore. Reg. C. E. No. 1497



NW 1/4 NW 11

S. E. EMIGRANT ST.



Q-333-AX