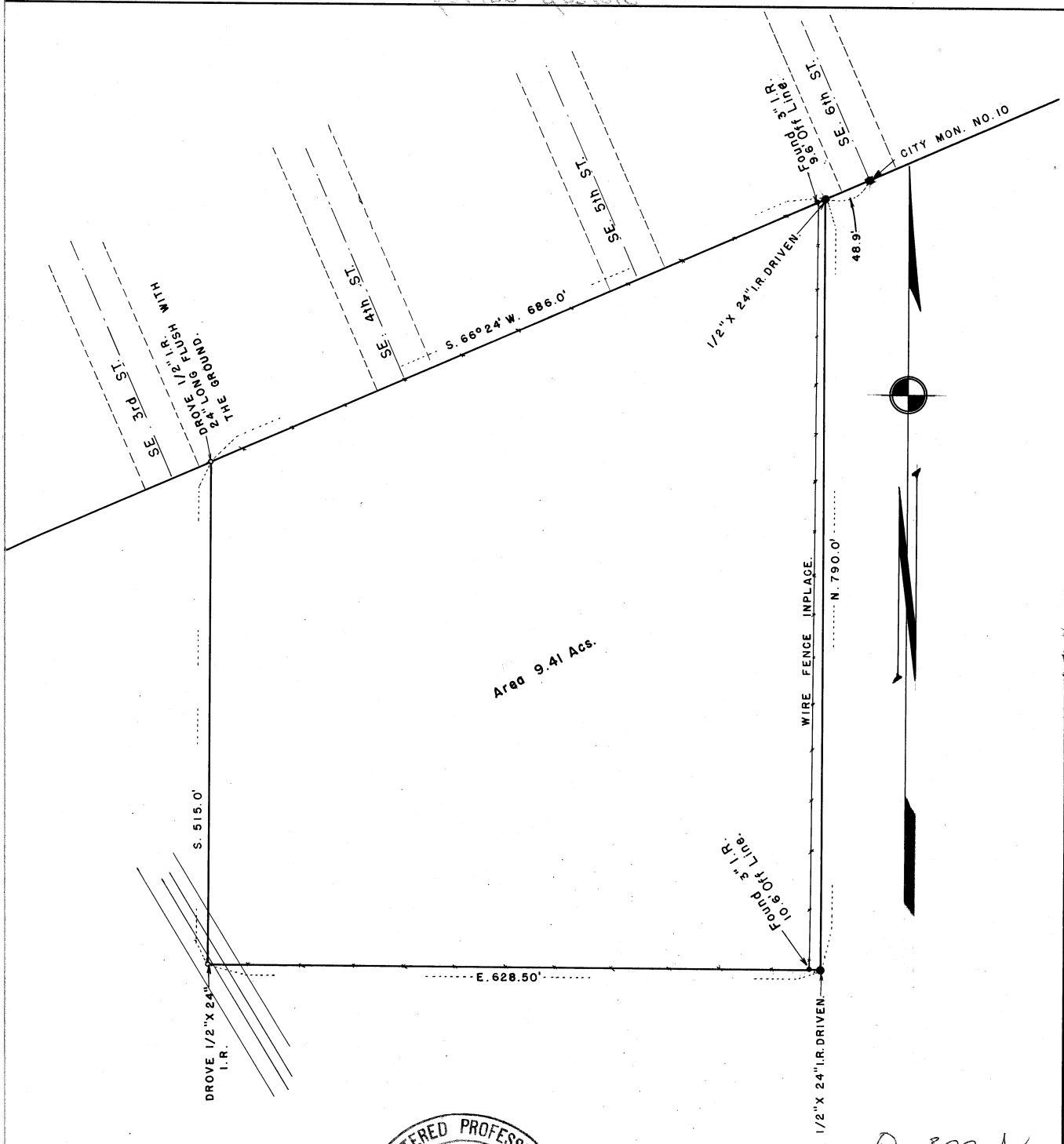
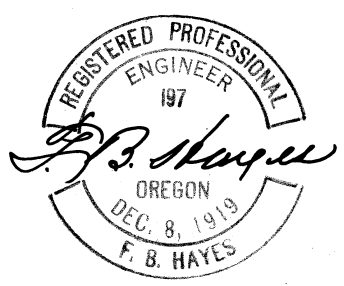


Stalcup Survey



Area 9.41 Acs.



Q-322-Ax

HAYES & HARRIS ENGINEERING		
SURVEY FOR GENE C. STALCUP		
A PARCEL OF GROUND IN THE NE <sup>4</sup> OF THE SW <sup>4</sup> OF SECTION 11, TWP. 2 N., RGE. 32, E.W.M.		
SCALE 1" = 100'	DATE 7/18/55	DRAWN BY F.B.H.