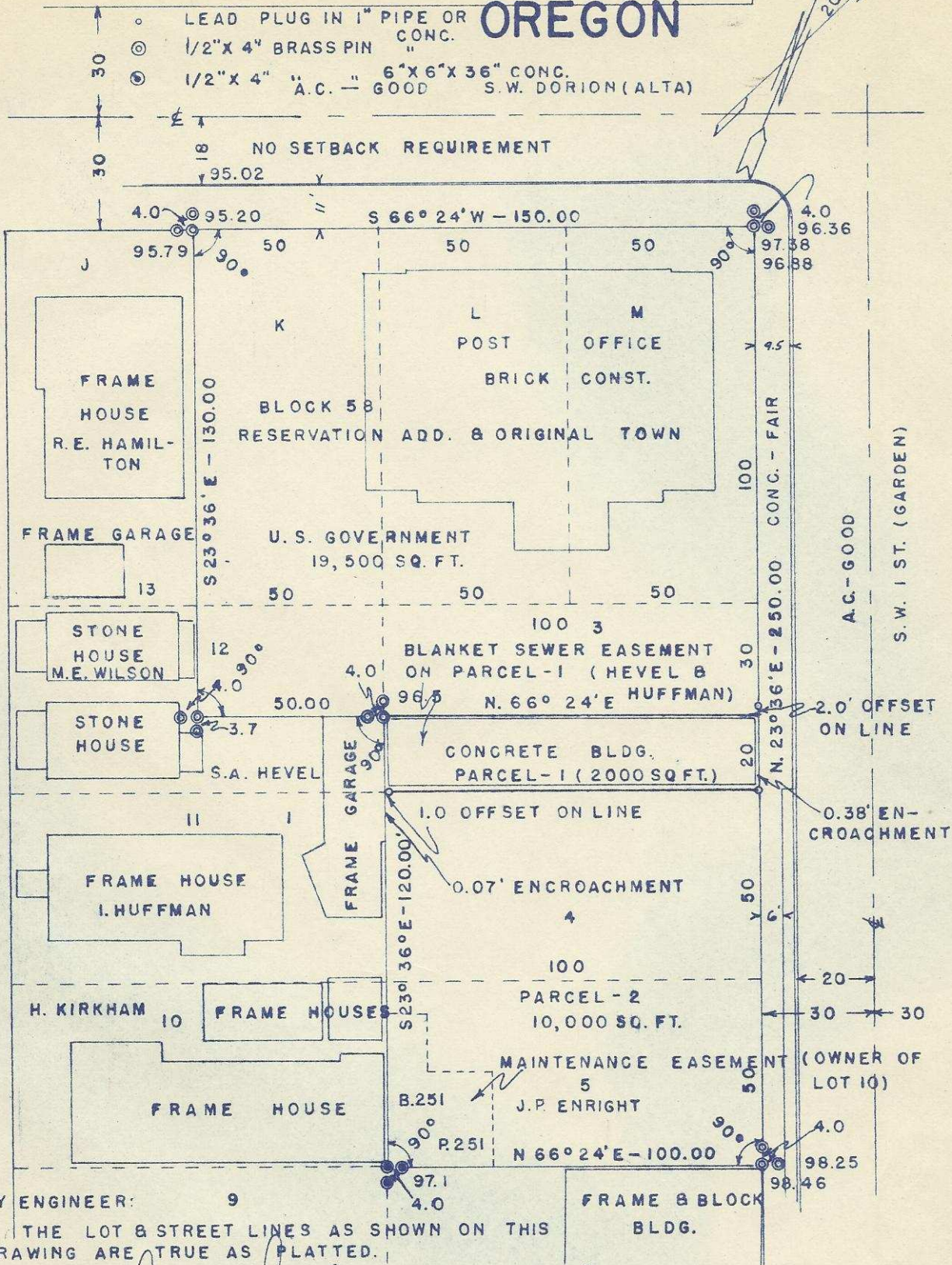


# PENDLETON, OREGON

Q-281-A



CITY ENGINEER: 9

THE LOT & STREET LINES AS SHOWN ON THIS DRAWING ARE TRUE AS PLATTED.

*Anton Good*  
CITY ENGINEER

FRAME & BLOCK BLDG.  
6

SURVEYOR:  
WAYNE O. HARRIS  
BOX 566  
PENDLETON, OREGON

POSTMASTER:

I HAVE PERSONALLY OBSERVED ALL MONUMENTS IN PLACE AS SHOWN ON THE ACCOMPANYING DRAWING.

*Joseph R. ...*  
POSTMASTER

orig

Q-281-A

NE NE 10

196

1 Aug 1961