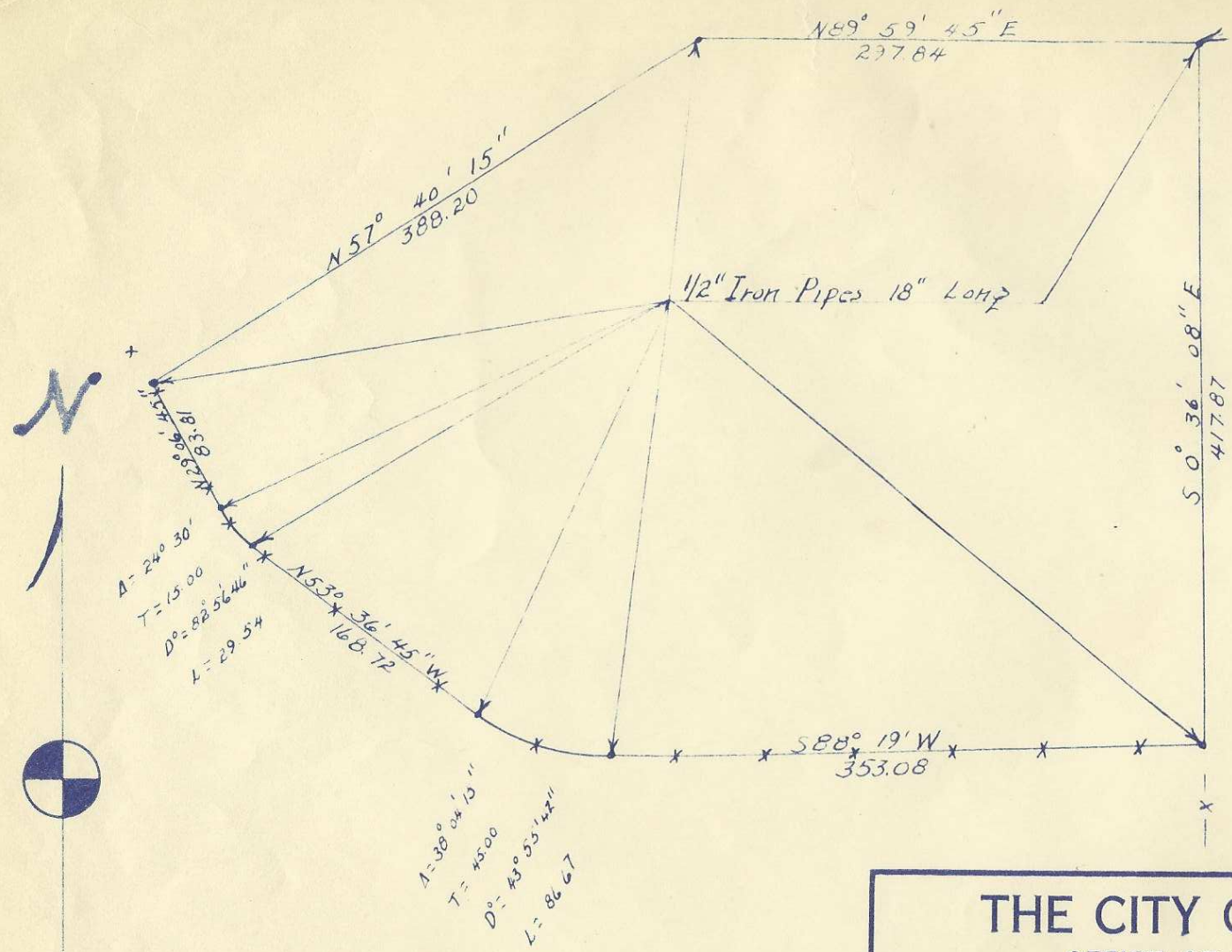


Q-211-AX

orig

Point of Beginning  
North East Corner  
of Lot 10 Section  
9 T2N R32 E W M



THE CITY OF PENDLETON  
OFFICE OF THE CITY ENGINEER

HARRIS PINE MILL  
TRACT

Q-211-AX

DR BY: C.A. Eadlerman  
CK. BY:

IMPROVEMENT DIST. NO. 276

SCALE: 1" = 100'

DATE: 3-25-54

DRG. NO.: A-54-22-M