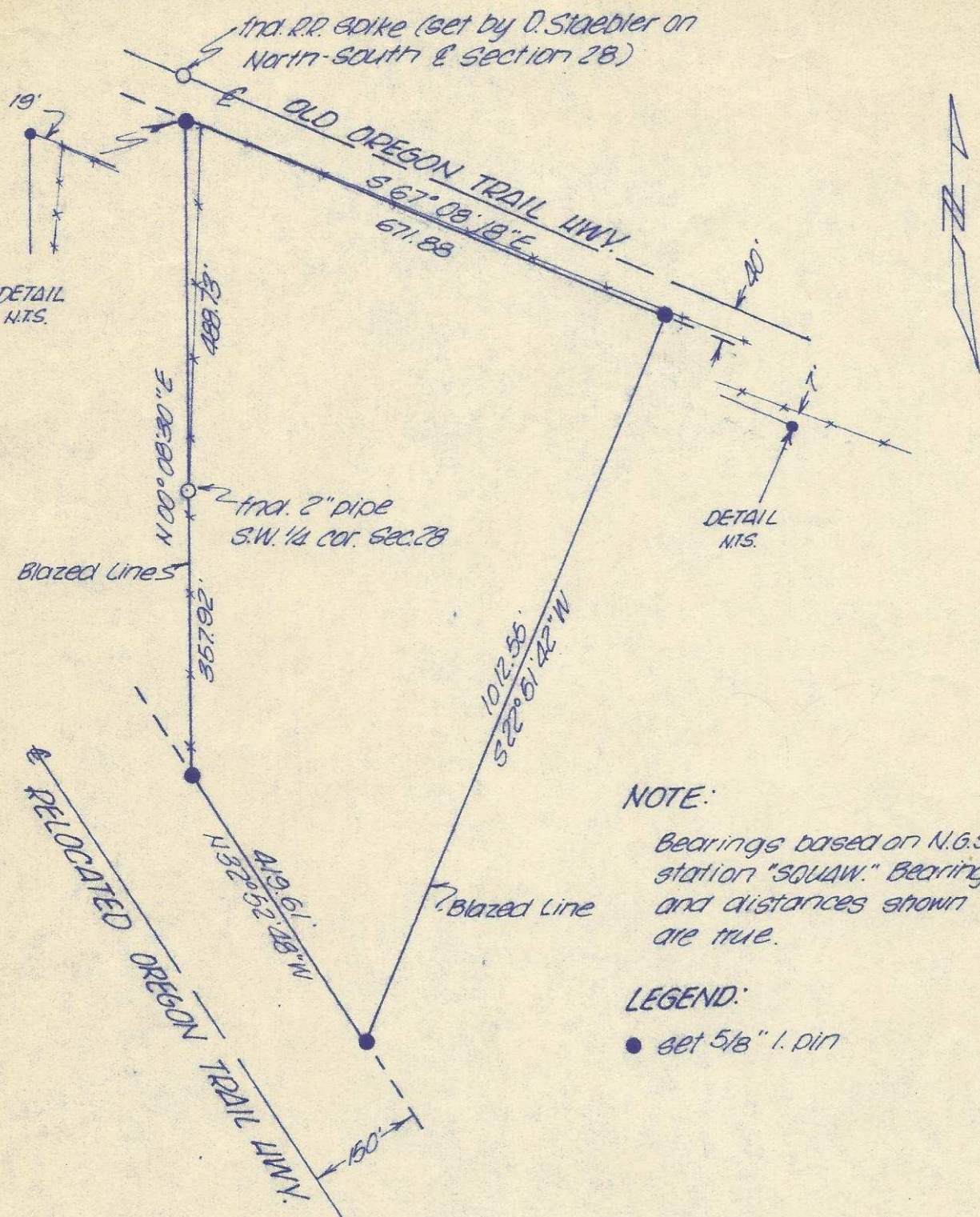


Q-71-Ax



NOTE:
 Bearings based on N.G.S. station "SQUAW." Bearings and distances shown are true.

LEGEND:
 ● set 5/8" l. pin

REGISTERED
 PROFESSIONAL
 LAND SURVEYOR
David H. Krumbein
 OREGON
 JULY 15, 1900
 DAVID H. KRUMBEIN
 933

KRUMBEIN ENGINEERING CO. ENGINEERS - SURVEYORS - PLANNERS 216 S.E. 1st, Pendleton, Oregon	SCALE 1" = 200'
	DATE Nov. 22, 1976
Survey for MARTIN LADD Parcel in the S.E. 1/4, Section 28, T1N, R36E, W.M.	DRN. BY T.E.H.
	CKD. BY D.H.K.
	DRNG. NO. 76-1084

Q-71-Ax