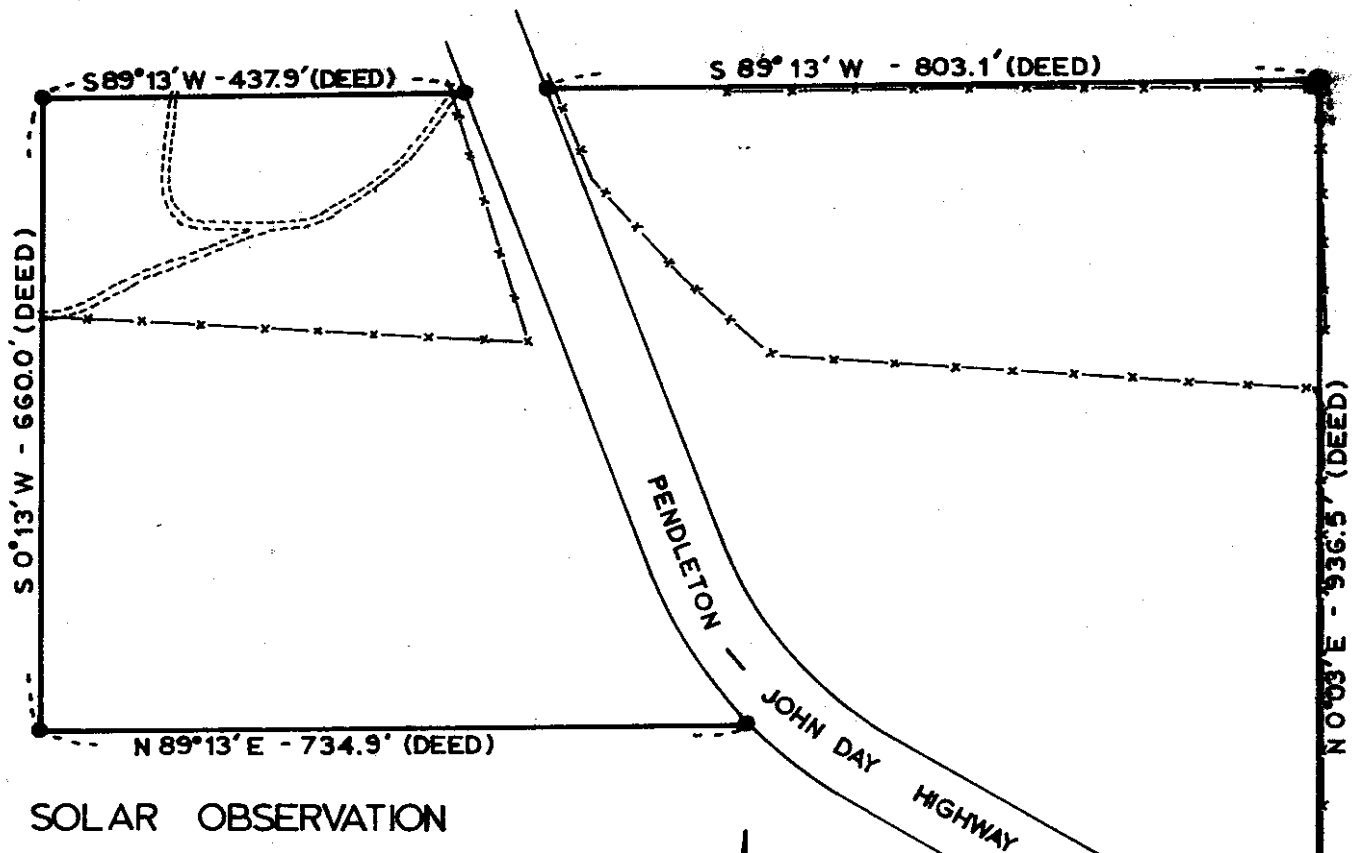


J-39-Ax



SOLAR OBSERVATION

MAGNETIC VARIATION	20° 30'
DATE	SEPT. 17, 1975
STANDARD TIME	9:05:20
G.C.T.	17:01:13
SUN'S DECLINATION	2° 35.1'
REF. & PAR. CORR.	-1.13'
SUN'S MEASURED ALTITUDE	33° 56' 30"
LATITUDE	45° 14' 30"
ELEVATION	3740'
TEMPERATURE	55°

PLACE OF OBSERVATION - N 14° 29' 45" W
 217.78' FROM THE SOUTH 1/4 CORNER -
 SECTION 4, T.4 S., R.31 E.W.M.



PLACE OF OBSERVATION

S 14° 29' 45" E - 217.78'

RESET ORIGINAL
 STONE FROM B.T.

NOTE:
 MONUMENTS SET ALONG HIGHWAY WERE
 SET FROM PARK DEED INFORMATION.

● INDICATES A 5/8" x 30" IRON ROD SET, WITH ALUM.
 CAP MARKED "OREGON STATE PARKS" AND
 STEEL BOUNDARY POST & PADDLE.

REGISTERED
 PROFESSIONAL
 LAND SURVEYOR

John E. Hollingsworth

OREGON
 JULY 9, 1968
 JOHN E. HOLLINGSWORTH
 691

OREGON STATE PARKS & RECREATION BRANCH
 BOUNDARY SURVEY
 BATTLE MOUNTAIN STATE WAYSIDE
 SE 1/4 SW 1/4 SECTION 4, T.4 S., R.31 E.W.M.
 UMATILLA COUNTY

SCALE 1" = 200'

OCTOBER 3, 1975

J-39-Ax