

ELM ST

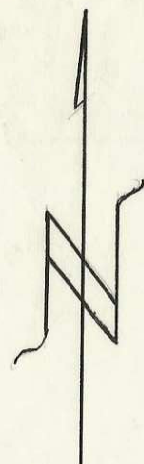
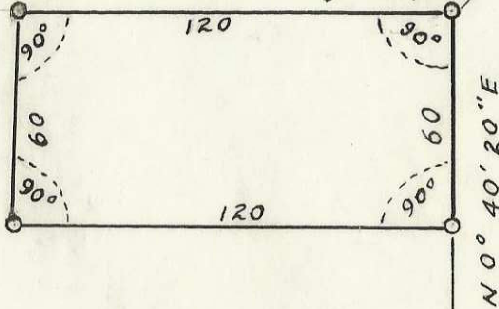
N 1/4 COR.

Carriage Bolt

[NE. COR. OF NE 1/4 / NE 1/4 / SE 1/4 / NW 1/4]

1/16 COR.
1" G.I. pipe

5/8" x 36" pipe



SCALE 1" = 50'

LEGEND

- POINTS FOUND AS NOTED
- POINTS SET 5/8" x 36" EYE BOLTS OR AS NOTED
- BEARINGS BASED ON E-W & OF SEC 10 ON COUNTY TAX MAPS GIVEN AS S 89° 30' E



J
75-19

RIDGEWAY AVE

ctr. of Sec

S 89° 30' E

1/2" Pin

SURVEY PLAT OF TRACT
 IN SE 1/4 OF NW 1/4 SEC. 10, T4N, R28E. W.M.
 CITY OF HERMISTON
 FOR JOE FLINK

3/12/75

J-14-A8