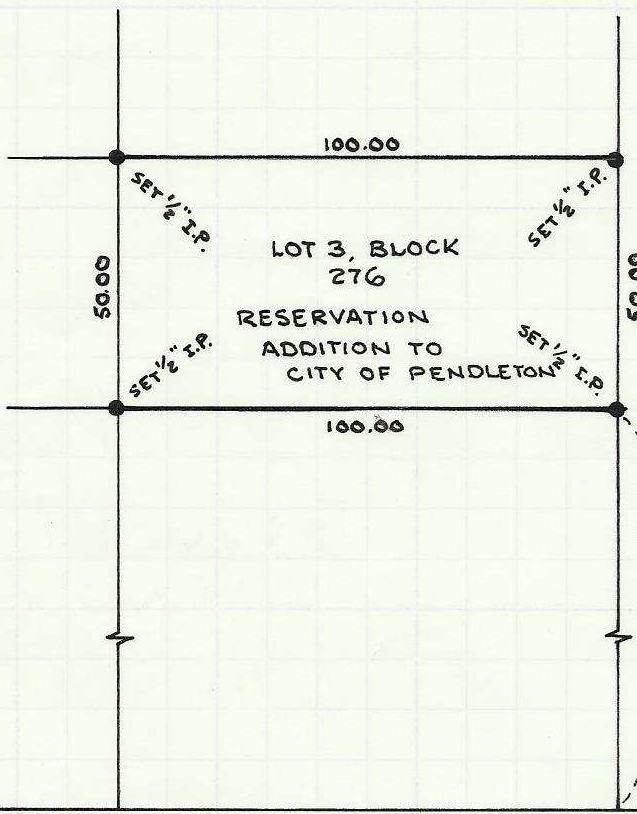
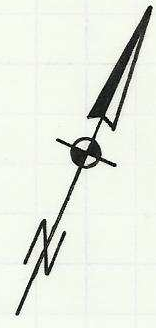


S.W. 10TH STREET

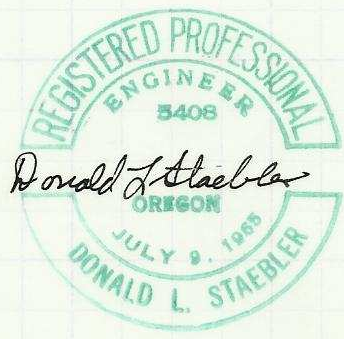


262.56 N 23° 36' W

176.00 S 66° 24' W

RESERVATION ADD'N BOUNDARY MONUMENT NO. 4, STONE WITH CROSS

RESERVATION ADD'N BOUNDARY MONUMENT NO. 6 - STONE WITH CROSS



PROJECT: PROPERTY SURVEY		
LOT 3, BLOCK 276, RESERVATION ADDITION TO CITY OF PENDLETON		
FOR: JULIUS H. NELSON		
DR. BY: KWC	DATE: 3-21-69	SCALE: 1" = 40'
CK. BY: DLS	REV:	SHEET 1 OF 1
DONALD L. STAEBLER CONSULTING ENGINEER 213 S.W. EMIGRANT P.O. BOX 91 PENDLETON OREGON		

SW 1/4 SE 1/4 Sec. 10, 2N 32

F-16