

Rec'd: 10/4/67

From County Ro. Dept.

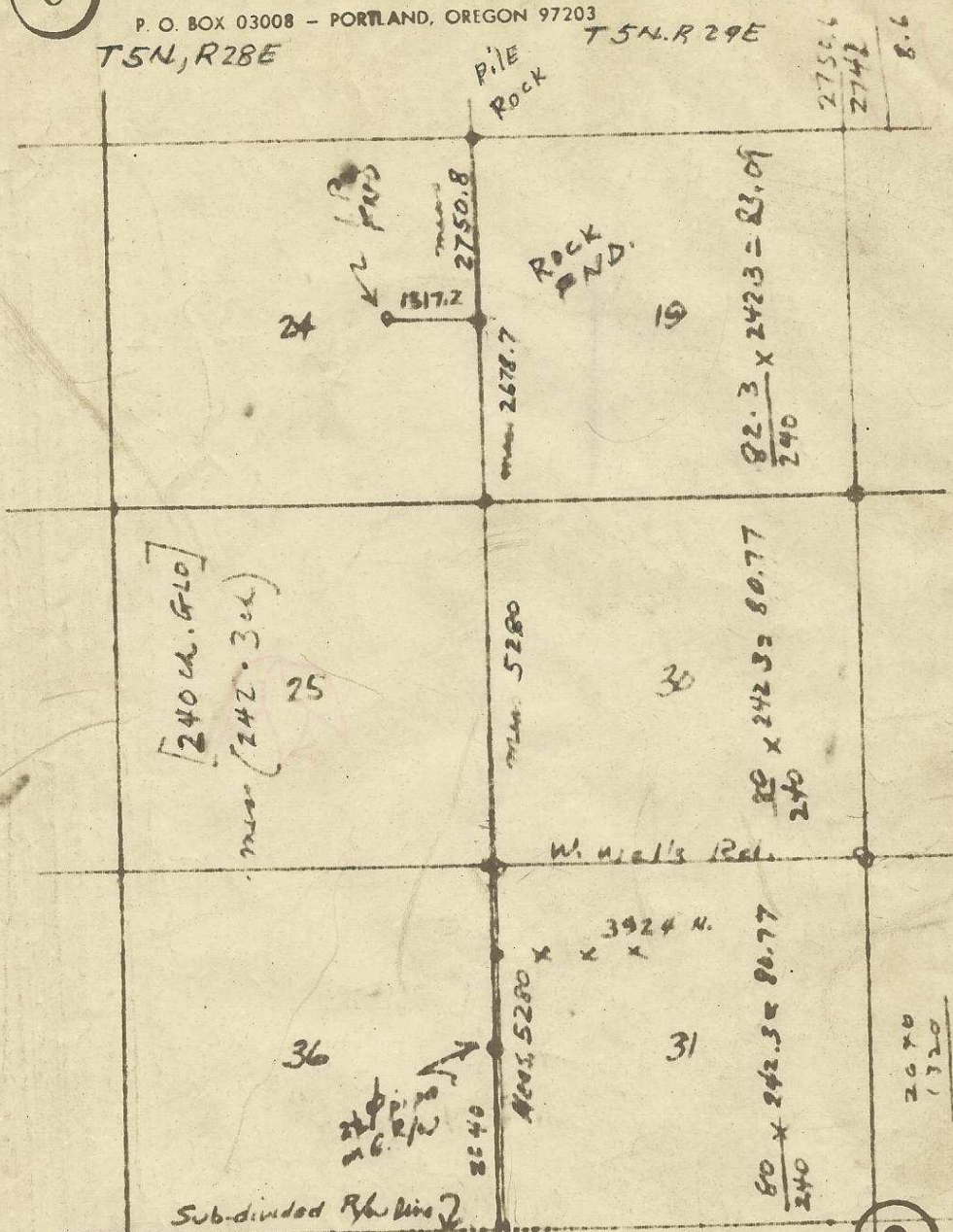


# GILMORE STEEL CORPORATION

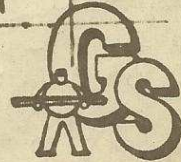


P. O. BOX 03008 - PORTLAND, OREGON 97203  
T5N, R28E

T5N, R29E



STEEL • TUBING • ALUMINUM  
PIPE • STAINLESS



E-16

E-16-Ax