

Storm Sewer

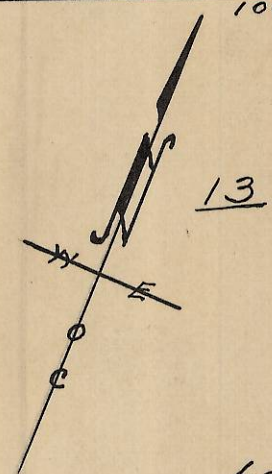
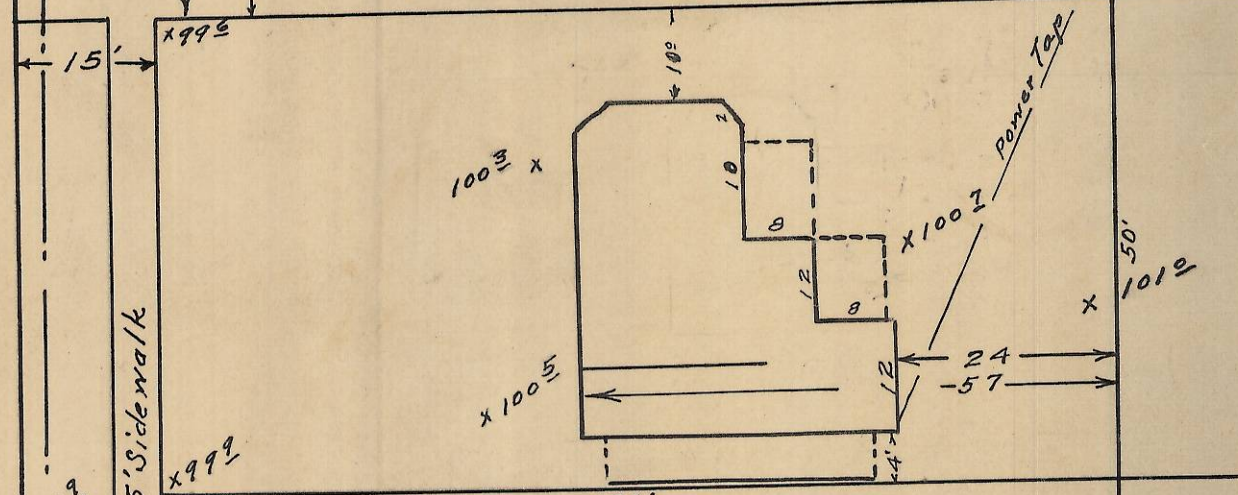
S.W. Emigrant Ave. 60' Wide. (Paved) X1005

12" San. Sewer

6" Kal. (Water) 4' Deep.

curb → Parking ← Power Line →

6' Sidewalk



Plat showing
 Lot 14 of Block 78 of
 Reservation Addition
 to the City of Pendleton, Ore.,
 Scale: 1 inch = 20 Feet.

Surveyed, Staked and Platted,
 By W. E. O. Criger.
 March - 1948.
 For J. L. Bacus -



RECEIVED BY
 Umatilla County Surveyor
 Date: 2/21/13
 Rec'd By: D. Tolson
 No.: 13-116-Ax

2N 32 10 AD